

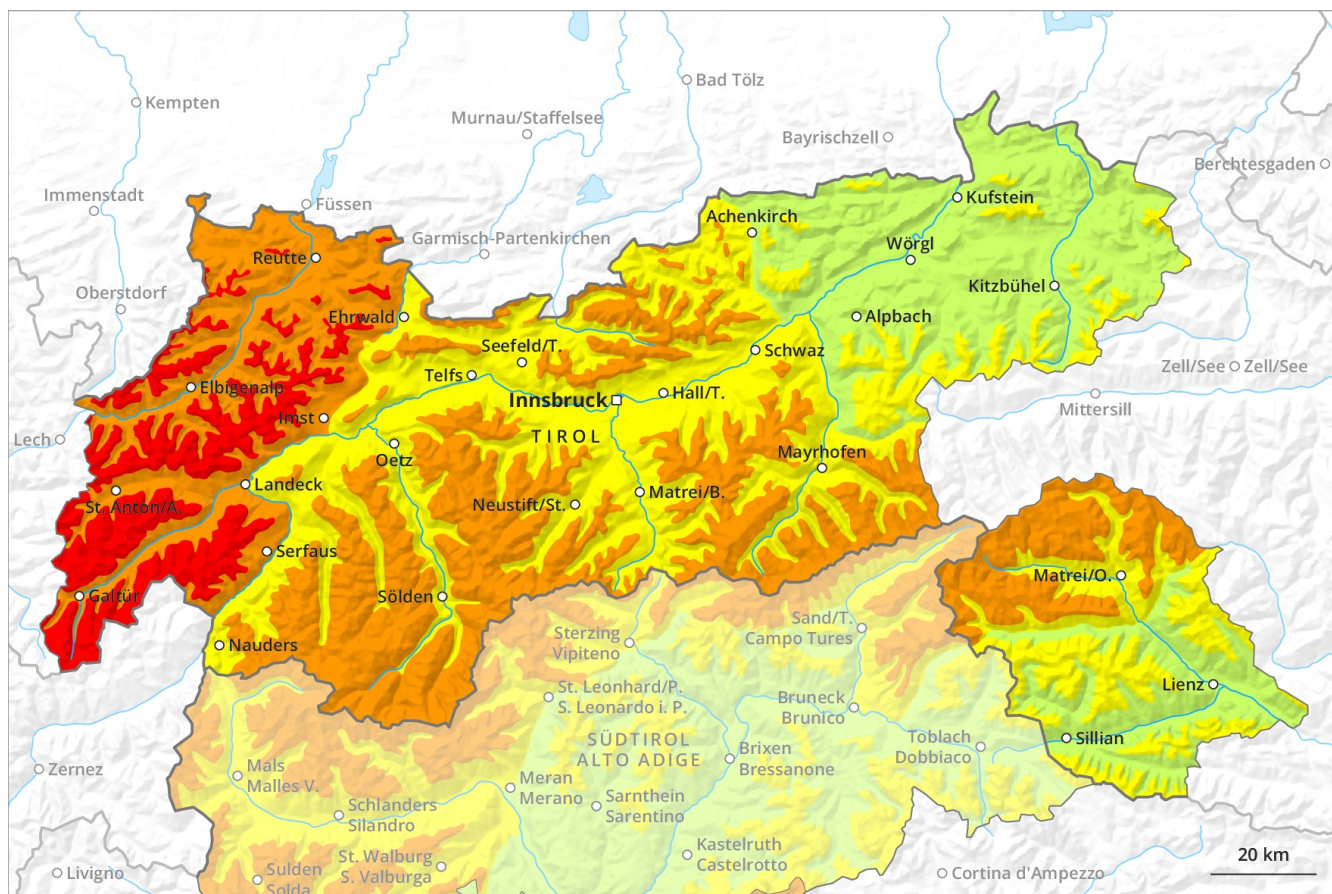
Avalanche Forecast

Sunday 09 12 2018

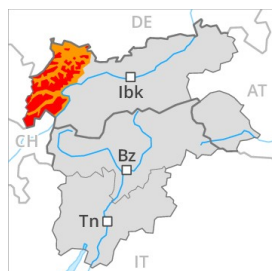
Published 10 12 2018, 08:46



Avalanche.report



Danger Level 4 - High



Tendency: Increasing avalanche danger on Monday 10 12 2018



Wind-drifted snow



Treeline



New snow



Treeline

Significant increase in avalanche danger as a consequence of fresh snow and wind.

Significant increase in avalanche danger as a consequence of fresh snow and strong wind. As a consequence of fresh snow and a strong to storm force westerly wind, avalanche prone wind slabs formed in the last few days in all aspects. The fresh snow and wind slabs of the last few days can be released easily, even by a single winter sport participant, above approximately 1800 m. As the day progresses possibly danger level 4 (high) will be reached above the tree line. The conditions are very precarious for backcountry touring and other off-piste activities outside marked and open pistes.

Snowpack

Danger patterns

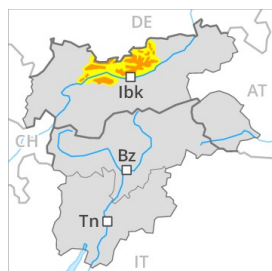
dp 6: cold, loose snow and wind

Over a wide area 70 to 100 cm of snow. will fall above approximately 1000 m. As a consequence of fresh snow and a strong to storm force westerly wind, extensive wind slabs will form on Sunday in all aspects. The sometimes large wind slabs of the last few days are bonding poorly with the old snowpack in all aspects above approximately 1800 m.

Tendency

Further increase in avalanche danger as a consequence of fresh snow and wind.

Danger Level 3 - Considerable



Tendency: Increasing avalanche danger on Monday 10 12 2018



Wind-drifted snow



Treeline



New snow



Treeline

Significant increase in avalanche danger as a consequence of fresh snow and wind.

Significant increase in avalanche danger as a consequence of fresh snow and strong wind. As a consequence of fresh snow and a strong to storm force westerly wind, avalanche prone wind slabs formed in the last few days in all aspects. The fresh snow and wind slabs of the last few days can be released easily, even by a single winter sport participant, above approximately 1800 m.

Snowpack

Danger patterns

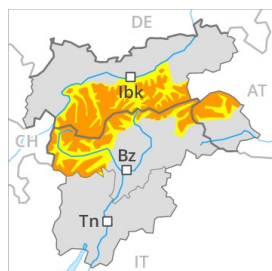
dp 6: cold, loose snow and wind

Over a wide area 60 to 80 cm of snow, and even more in some localities, will fall above approximately 1200 m. As a consequence of fresh snow and a strong to storm force westerly wind, avalanche prone wind slabs formed in the last few days. The extensive wind slabs of the last few days are bonding poorly with the old snowpack in all aspects above approximately 1800 m.

Tendency

Further increase in avalanche danger as a consequence of fresh snow and wind.

Danger Level 3 - Considerable



Tendency: Increasing avalanche danger on Monday 10 12 2018



Wind-drifted snow



Treeline

Gradual increase in avalanche danger as a consequence of fresh snow and stormy weather.

By the evening the wind slabs will increase in size substantially. As a consequence of fresh snow and stormy weather natural avalanches are possible as the day progresses, but they can reach medium size. In addition the sometimes fresh snow-covered wind slabs in particular adjacent to ridgelines in all aspects and generally at high altitudes are easily triggered. The prevalence of avalanche prone locations and likelihood of triggering will increase at high altitude and in the high Alpine regions. Backcountry touring and other off-piste activities call for experience in the assessment of avalanche danger and careful route selection.

Snowpack

Danger patterns

dp 6: cold, loose snow and wind

In particular along the border with Tirol stormy weather and fresh snow to intermediate altitudes. The backcountry touring conditions are to some extent unfavourable.

Danger Level 2 - Moderate



Tendency: Constant avalanche danger on Monday 10 12 2018 →



Wind-drifted snow



Treeline

Fresh wind slabs require caution.

In the last few days mostly small wind slabs formed in particular adjacent to ridgelines as well as at high altitude. These avalanche prone locations are to be found in particular on wind-loaded slopes above approximately 1800 m. Winter sport participants can release avalanches in some places, including medium-sized ones.

Snowpack

Danger patterns

dp 6: cold, loose snow and wind

The old snowpack will be generally well bonded. Wind slabs are lying on soft layers. Below approximately 1800 m only a little snow is lying.

Tendency

As the day progresses the avalanche activity will not yet significantly decrease.

Danger Level 2 - Moderate



Tendency: Increasing avalanche danger on Monday 10 12 2018



Wind-drifted snow



New snow



Fresh snow and wind slabs are to be assessed with care and prudence.

In the last four days sometimes easily released wind slabs formed in particular adjacent to ridgelines as well as at high altitude. These avalanche prone locations are to be found in particular on wind-loaded slopes above approximately 1800 m. Winter sport participants can release avalanches with increasing likelihood, including medium-sized ones.

Snowpack

Danger patterns

dp 6: cold, loose snow and wind

As a consequence of fresh snow and a strong to storm force wind from northwesterly directions, avalanche prone wind slabs formed in the last few days in all aspects. Over a wide area wind slabs are lying on the soft surface of an old snowpack.

Tendency

As a consequence of fresh snow and wind the avalanche prone locations will become more prevalent as the day progresses.