

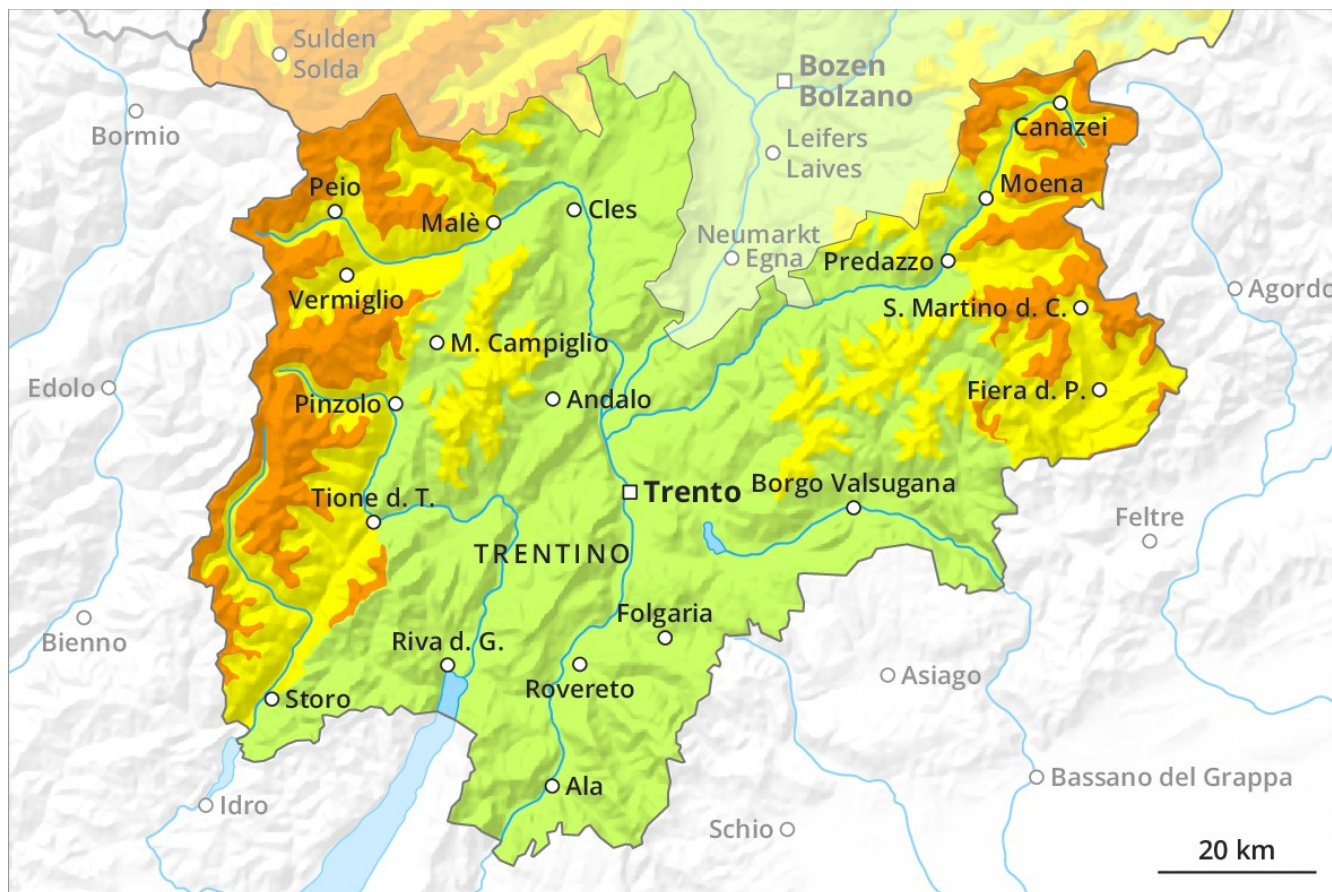
Avalanche Forecast

Sunday 09 12 2018

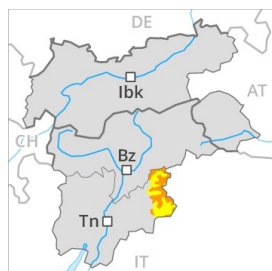
Published 08 12 2018, 17:00



Avalanche.report



Danger Level 3 - Considerable



Tendency: Increasing avalanche danger
on Monday 10 12 2018



Wind-drifted
snow



2200m

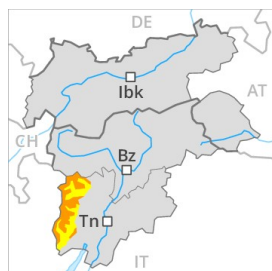
Gradual increase in avalanche danger as a consequence of fresh snow and strong wind.

By the evening the wind slabs will increase in size substantially. As a consequence of fresh snow and stormy weather natural avalanches are possible as the day progresses, but they can reach medium size. In addition the sometimes fresh snow-covered wind slabs in particular adjacent to ridgelines in all aspects and generally at high altitudes are easily triggered. Backcountry touring and other off-piste activities call for experience in the assessment of avalanche danger and careful route selection.

Snowpack

In particular along the border with Tirol stormy weather and fresh snow to intermediate altitudes. The backcountry touring conditions are to some extent unfavourable.

Danger Level 3 - Considerable



Tendency: Increasing avalanche danger
on Monday 10 12 2018



Wind-drifted
snow



2200m

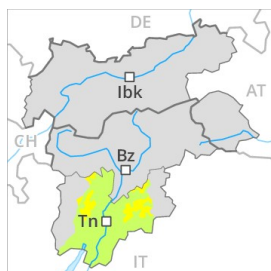
Gradual increase in avalanche danger as a consequence of fresh snow and strong wind.

By the evening the wind slabs will increase in size substantially. As a consequence of fresh snow and stormy weather natural avalanches are possible as the day progresses, but they can reach medium size. In addition the sometimes fresh snow-covered wind slabs in particular adjacent to ridgelines in all aspects and generally at high altitudes are easily triggered. Backcountry touring and other off-piste activities call for experience in the assessment of avalanche danger and careful route selection.

Snowpack

In particular along the border with Tirol stormy weather and fresh snow to intermediate altitudes. The backcountry touring conditions are to some extent unfavourable.

Danger Level 2 - Moderate



Tendency: Constant avalanche danger
on Monday 10 12 2018 →



Wind-drifted
snow



2200m

The wind slabs are difficult even for the trained eye to recognise and to be assessed critically.

The old snowpack remains in most cases well bonded. In some cases various wind slab layers are lying on the smooth surface of an old snowpack.

Snowpack

Danger patterns

dp 1: deep persistent weak layer

Fresh and older wind slabs represent the main danger. Below approximately 2500 m small and, in isolated cases, medium-sized moist loose snow avalanches are possible.

Tendency

The snowpack remains in most cases favourable.