

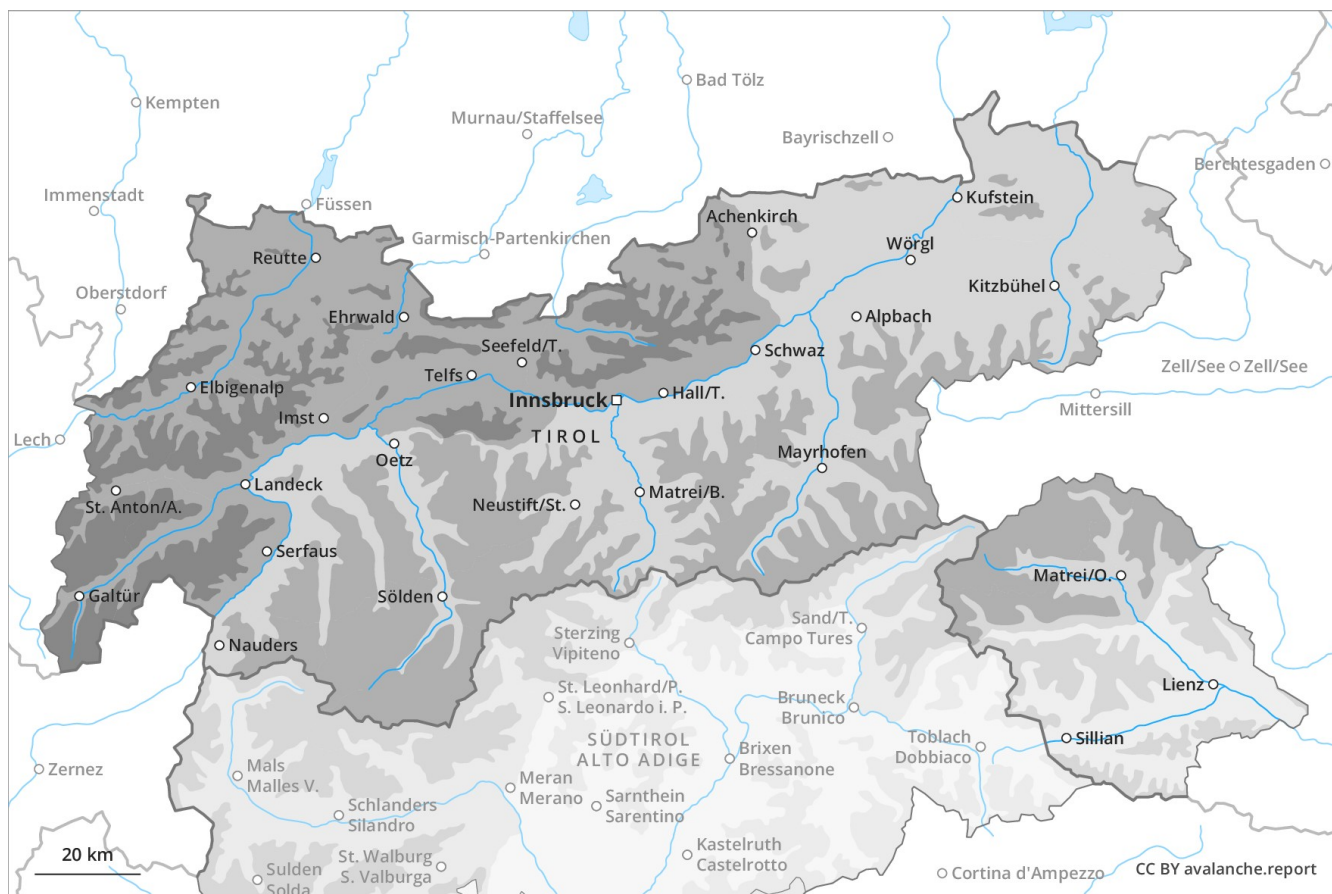
Avalanche Forecast

Monday 10 12 2018

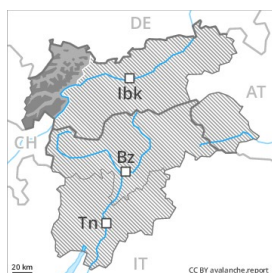
Published 17 12 2018, 10:38



Avalanche.report



Danger Level 4 - High



Tendency: Increasing avalanche danger
on Tuesday 11 12 2018



Wind-drifted
snow



Treeline



New snow



Treeline

Significant increase in avalanche danger as a consequence of fresh snow and wind.

Significant increase in avalanche danger as a consequence of fresh snow and strong wind. As a consequence of fresh snow and a strong to storm force westerly wind, avalanche prone wind slabs formed in the last few days in all aspects. The fresh snow and wind slabs of the last few days can be released easily, even by a single winter sport participant, above approximately 1800 m. By the early morning over a wide area danger level 4 (high) will be reached above the tree line. The conditions are very precarious for backcountry touring and other off-piste activities outside marked and open pistes.

Snowpack

Danger patterns

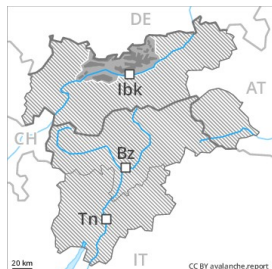
dp 6: cold, loose snow and wind

70 to 100 cm of snow, and even more in some localities, fell above approximately 1200 m. As a consequence of fresh snow and a strong to storm force westerly wind, extensive wind slabs formed in all aspects. The sometimes large wind slabs of the last few days are bonding poorly with the old snowpack in all aspects.

Tendency

Further increase in avalanche danger as a consequence of fresh snow and wind.

Danger Level 4 - High



Tendency: Constant avalanche danger →
on Tuesday 11 12 2018



Wind-drifted
snow



Treeline



New snow



Treeline

Significant increase in avalanche danger as a consequence of fresh snow and wind.

Significant increase in avalanche danger as a consequence of fresh snow and strong wind. As a consequence of fresh snow and a strong to storm force westerly wind, avalanche prone wind slabs formed in the last few days in all aspects. The fresh snow and wind slabs of the last few days can be released easily, even by a single winter sport participant, above approximately 1800 m. As before, it is inadvisable to engage in backcountry touring and other off-piste activities outside marked and open pistes.

Snowpack

Danger patterns

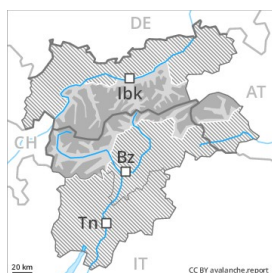
dp 6: cold, loose snow and wind

Over a wide area 50 cm of snow, and even more in some localities, fell above approximately 1200 m. As a consequence of fresh snow and a strong to storm force westerly wind, avalanche prone wind slabs formed in the last few days. The extensive wind slabs of the last few days are bonding poorly with the old snowpack in all aspects above approximately 1800 m.

Tendency

Further increase in avalanche danger as a consequence of fresh snow and wind. By the early morning possibly danger level 4 (high) will be reached above approximately 1800 m.

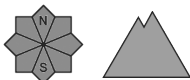
Danger Level 3 - Considerable



Tendency: Constant avalanche danger →
on Tuesday 11 12 2018



Wind-drifted
snow



Fresh snow and wind slabs are to be assessed with care and prudence.

Natural avalanches are possible on Monday, even quite large ones. In addition the sometimes fresh snow-covered wind slabs in particular adjacent to ridgelines in all aspects and at elevated altitudes are easily triggered. The number and size of avalanche prone locations will increase at high altitude and in the high Alpine regions. Backcountry touring and other off-piste activities call for experience in the assessment of avalanche danger and careful route selection. The Avalanche Warning Service currently has only a small amount of information, so that the avalanche danger should be investigated especially thoroughly in the relevant locality.

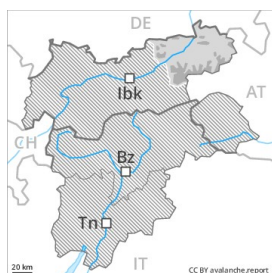
Snowpack

Danger patterns

dp 6: cold, loose snow and wind

In the last three days the previously small wind slabs have increased in size substantially. The wind slabs have bonded insufficiently with the old snowpack. The backcountry touring conditions are unfavourable.

Danger Level 3 - Considerable



Tendency: Constant avalanche danger →
on Tuesday 11 12 2018



Wind-drifted
snow



Treeline



New snow



Treeline

Significant increase in avalanche danger as a consequence of fresh snow and stormy weather.

In the last four days extensive wind slabs formed in all aspects. These avalanche prone locations are to be found in particular on wind-loaded slopes above approximately 1600 m. Winter sport participants can release avalanches with increasing likelihood, including medium-sized ones.

Snowpack

Danger patterns

dp 6: cold, loose snow and wind

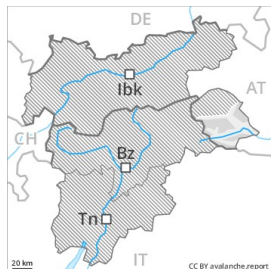
Over a wide area 60 to 80 cm of snow, but less in some localities, fell above approximately 1200 m. As a consequence of fresh snow and a strong to storm force wind from northwesterly directions, avalanche prone wind slabs formed in the last few days in all aspects. Over a wide area wind slabs are lying on the soft surface of an old snowpack.

Tendency

As a consequence of fresh snow and wind the avalanche prone locations will become more prevalent as the day progresses. By the early morning probably danger level 3 (considerable) will be reached above approximately 1600 m.



Danger Level 2 - Moderate



Tendency: Constant avalanche danger →
on Tuesday 11 12 2018



Wind-drifted
snow



Treeline

Fresh wind slabs require caution.

In the last few days mostly small wind slabs formed in particular adjacent to ridgelines as well as at high altitude. These avalanche prone locations are to be found in particular on wind-loaded slopes above approximately 1800 m. Winter sport participants can release avalanches in some places, including medium-sized ones.

Snowpack

Danger patterns

dp 6: cold, loose snow and wind

The old snowpack will be generally well bonded. Wind slabs are lying on soft layers. Below approximately 1800 m only a little snow is lying.

Tendency

Hardly any increase in avalanche danger.