

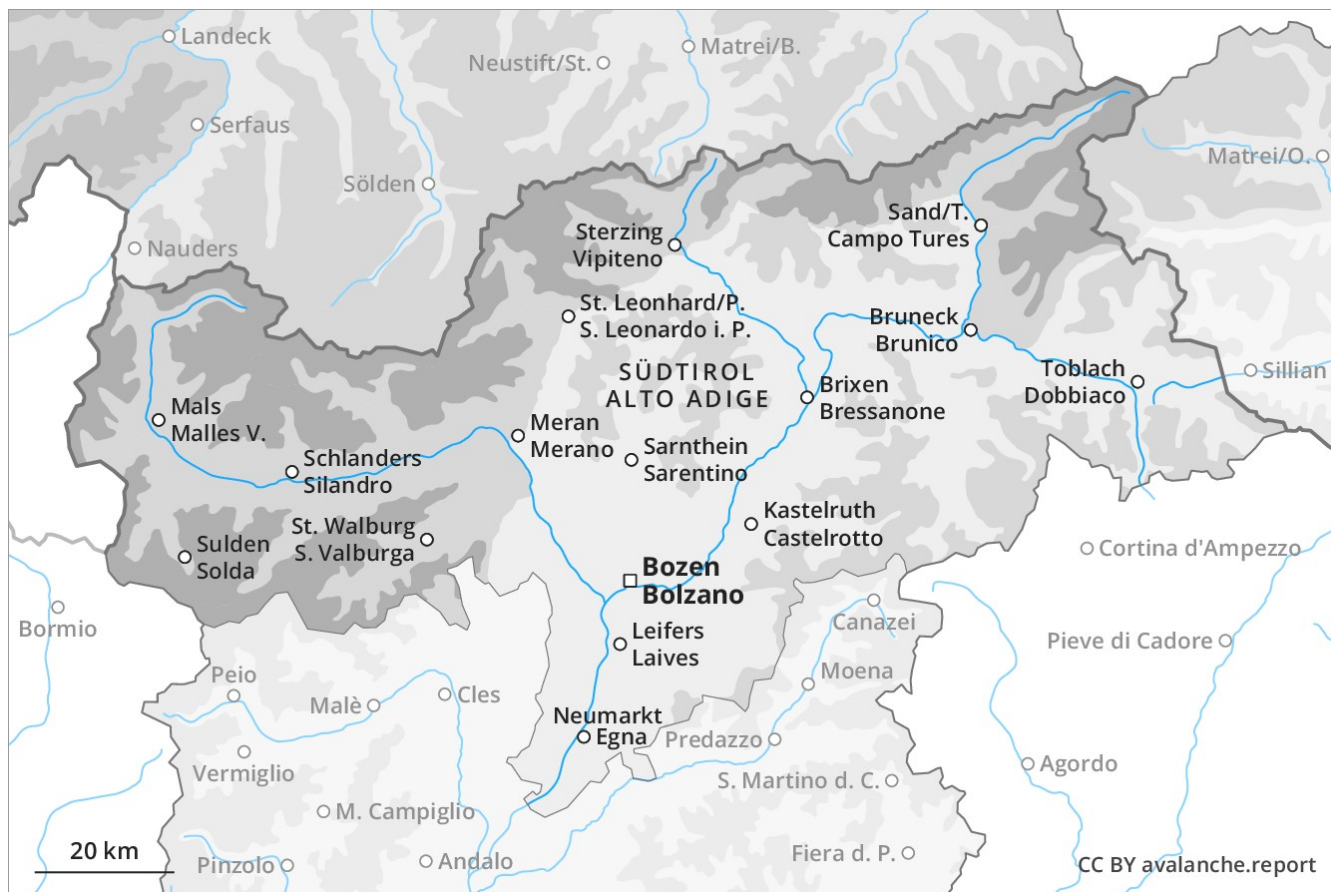
Avalanche Forecast

Monday 10 12 2018

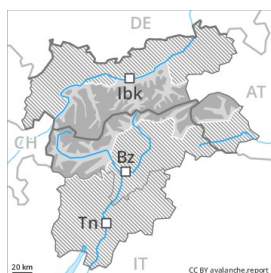
Published 17 12 2018, 10:38



Avalanche.report



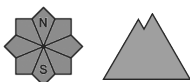
Danger Level 3 - Considerable



Tendency: Constant avalanche danger →
on Tuesday 11 12 2018



Wind-drifted
snow



Fresh snow and wind slabs are to be assessed with care and prudence.

Natural avalanches are possible on Monday, even quite large ones. In addition the sometimes fresh snow-covered wind slabs in particular adjacent to ridgelines in all aspects and at elevated altitudes are easily triggered. The number and size of avalanche prone locations will increase at high altitude and in the high Alpine regions. Backcountry touring and other off-piste activities call for experience in the assessment of avalanche danger and careful route selection. The Avalanche Warning Service currently has only a small amount of information, so that the avalanche danger should be investigated especially thoroughly in the relevant locality.

Snowpack

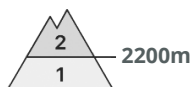
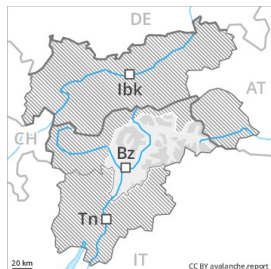
Danger patterns

dp 6: cold, loose snow and wind

In the last three days the previously small wind slabs have increased in size substantially. The wind slabs have bonded insufficiently with the old snowpack. The backcountry touring conditions are unfavourable.



Danger Level 2 - Moderate



Tendency: Constant avalanche danger →
on Tuesday 11 12 2018



Wind-drifted
snow



Fresh wind slabs require caution.

In the last few days mostly small wind slabs formed in particular adjacent to ridgelines as well as at high altitude. These avalanche prone locations are to be found especially in places that are protected from the wind above approximately 2200 m. Winter sport participants can release avalanches in some places, including medium-sized ones. The Avalanche Warning Service currently has only a small amount of information that has been collected in the field, so that the avalanche danger should be investigated especially thoroughly in the relevant locality.

Snowpack

The old snowpack will be generally well bonded. Wind slabs are lying on soft layers. Below approximately 2200 m only a little snow is lying.

Tendency

As a consequence of the fresh snow the prevalence of avalanche prone locations will increase during the course of the night.