

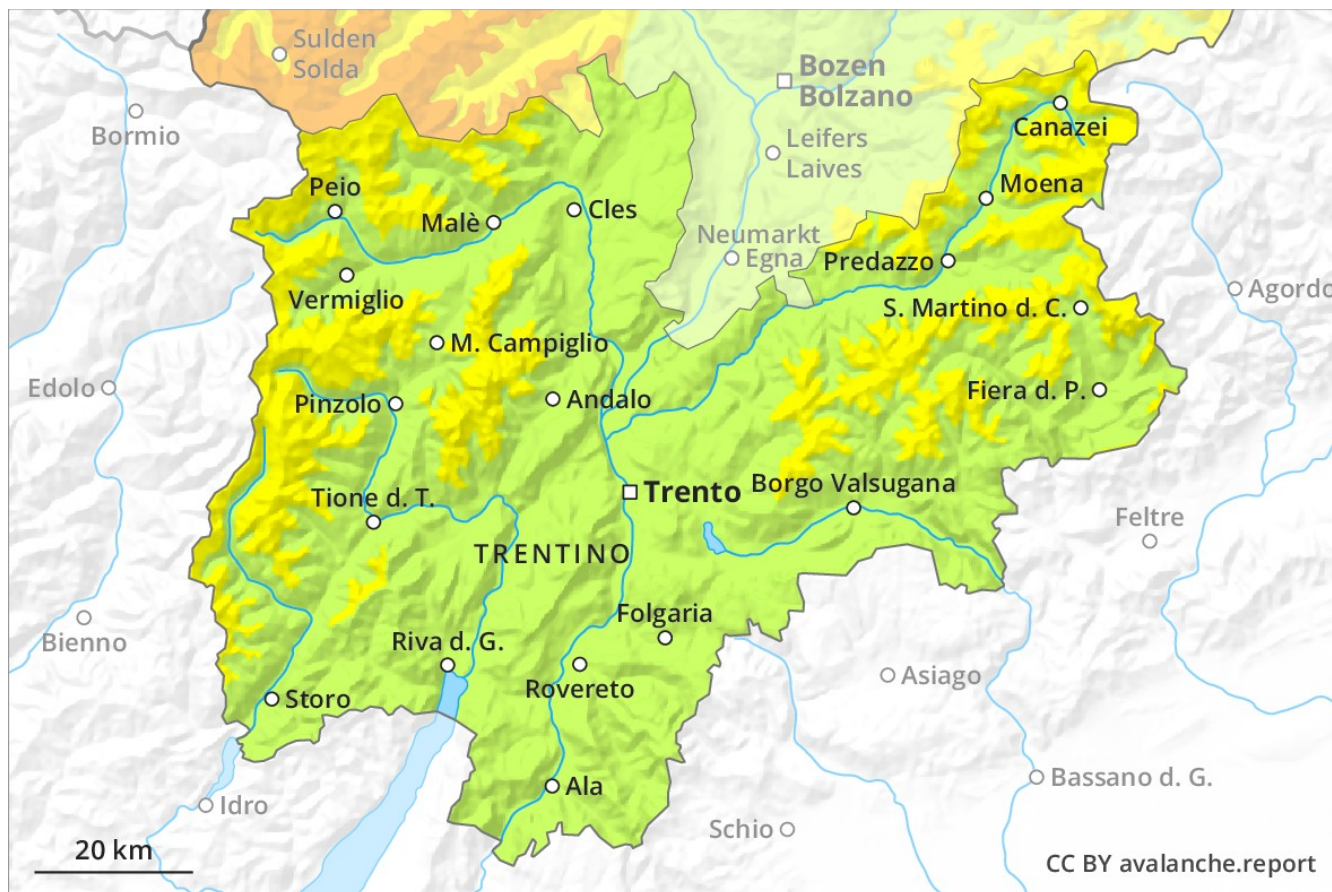
Avalanche Forecast

Monday 10 12 2018

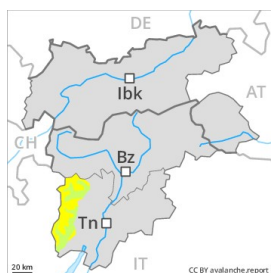
Published 09 12 2018, 17:00



Avalanche.report



Danger Level 2 - Moderate



Tendency: Increasing avalanche danger
on Tuesday 11 12 2018



Wind-drifted
snow



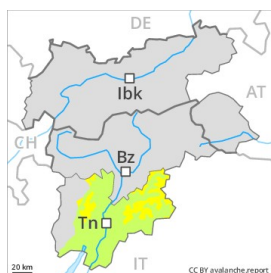
In some localities increase in avalanche danger as a consequence of the sometimes strong northerly wind.

Backcountry touring and other off-piste activities call for experience in the assessment of avalanche danger and careful route selection. In addition the sometimes fresh snow-covered wind slabs in particular adjacent to ridgelines in all aspects and generally at high altitudes are easily triggered in isolated cases still.

Snowpack

In some localities strong northerly wind in the high Alpine regions. The backcountry touring conditions are to some extent unfavourable.

Danger Level 2 - Moderate



Tendency: Constant avalanche danger →

on Tuesday 11 12 2018



Wind-drifted
snow



The wind slabs are easy for the trained eye to recognise and to be assessed with care and prudence.

The old snowpack remains in most cases well bonded. In some cases various wind slab layers are lying on the smooth surface of an old snowpack.

Snowpack

Danger patterns

dp 1: deep persistent weak layer

Fresh and older wind slabs represent the main danger. Below approximately 2500 m small and, in isolated cases, medium-sized moist loose snow avalanches are possible.

Tendency

The snowpack remains in most cases favourable.