

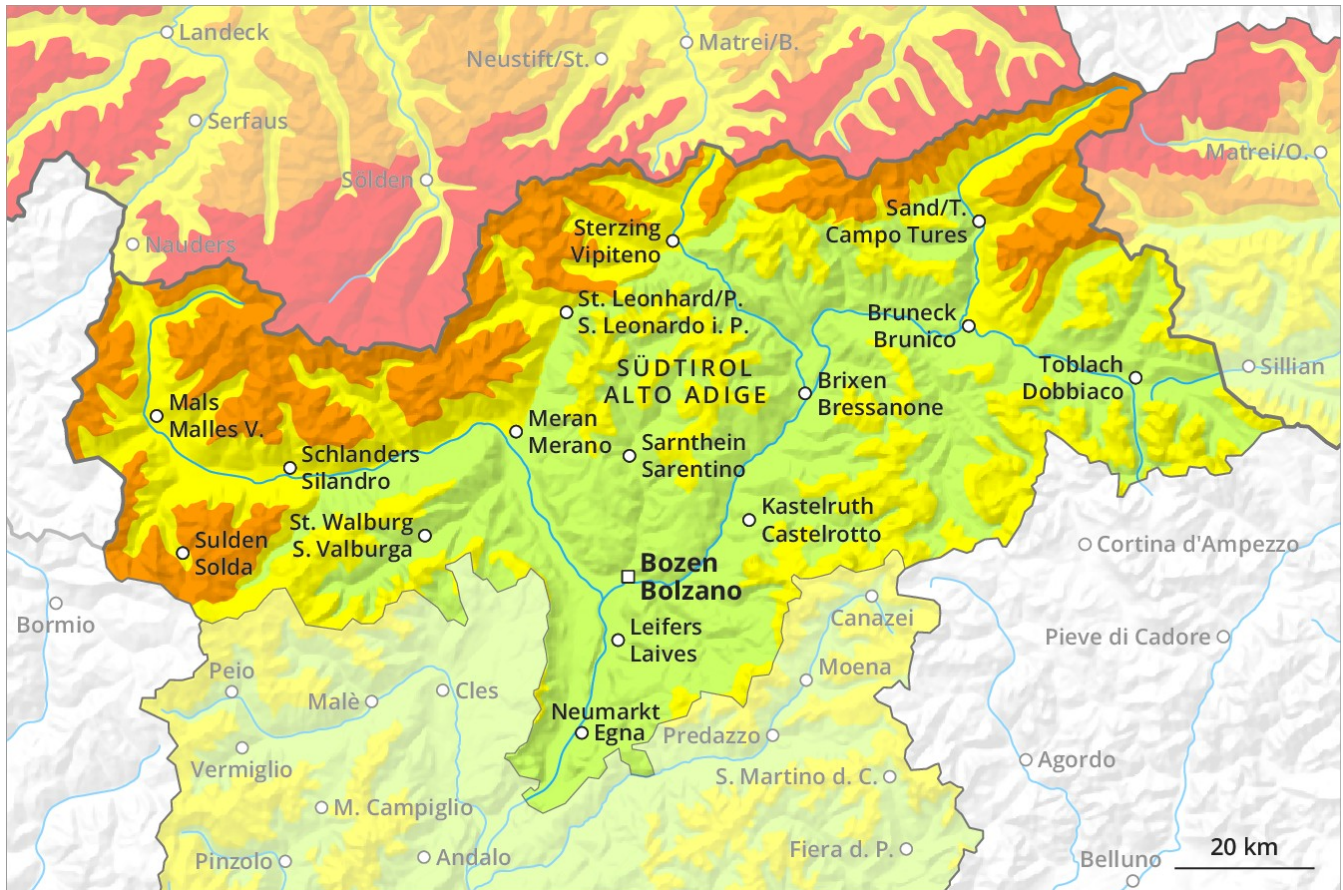
# Avalanche Forecast

## Tuesday 11 12 2018

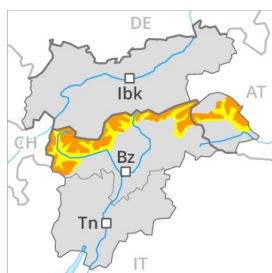
Published 10 12 2018, 17:07



Avalanche.report



## Danger Level 3 - Considerable



**Tendency: Constant avalanche danger** →  
on Wednesday 12 12 2018



Wind-drifted  
snow



Treeline



New snow



Treeline

### Fresh snow and wind slabs represent the main danger.

As a consequence of fresh snow and a strong to storm force northwesterly wind, sometimes easily released wind slabs formed in the last few days in particular adjacent to ridgelines and in gullies and bowls as well as above the tree line. As a consequence of fresh snow and wind the avalanche prone locations will become more prevalent. Dry avalanches can as before be released by a single winter sport participant. Remotely triggered and natural avalanches are possible in isolated cases. In particular in regions neighbouring those that are subject to danger level 4 (high) avalanche prone locations are more prevalent and the danger is greater. Backcountry touring calls for experience in the assessment of avalanche danger. Defensive route selection is advisable.

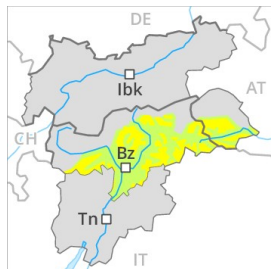
### Snowpack

**Danger patterns**

dp 6: cold, loose snow and wind

Over a wide area 30 cm of snow, and up to 50 cm in some localities, has fallen in the last two days above approximately 2000 m. The old snowpack will be in most cases favourable. In many cases fresh snow and wind slabs are lying on the soft surface of an old snowpack.

## Danger Level 2 - Moderate



**Tendency: Constant avalanche danger** →  
on Wednesday 12 12 2018



Wind-drifted  
snow



Treeline

### Fresh wind slabs require caution.

As a consequence of a gathering storm force wind from northwesterly directions, sometimes avalanche prone wind slabs will form since Saturday especially adjacent to ridgelines as well as above the tree line. At elevated altitudes the avalanche prone locations are more prevalent and larger. In particular in the regions neighbouring those that are subject to danger level 3 (considerable) avalanche prone locations are more prevalent and the danger is greater. Avalanches can in isolated cases be released easily and reach medium size.

### Snowpack

**Danger patterns**

dp 6: cold, loose snow and wind

In particular in the north up to 20 cm of snow. has fallen in the last two days above approximately 2000 m. The sometimes strong wind will transport the fresh snow.