

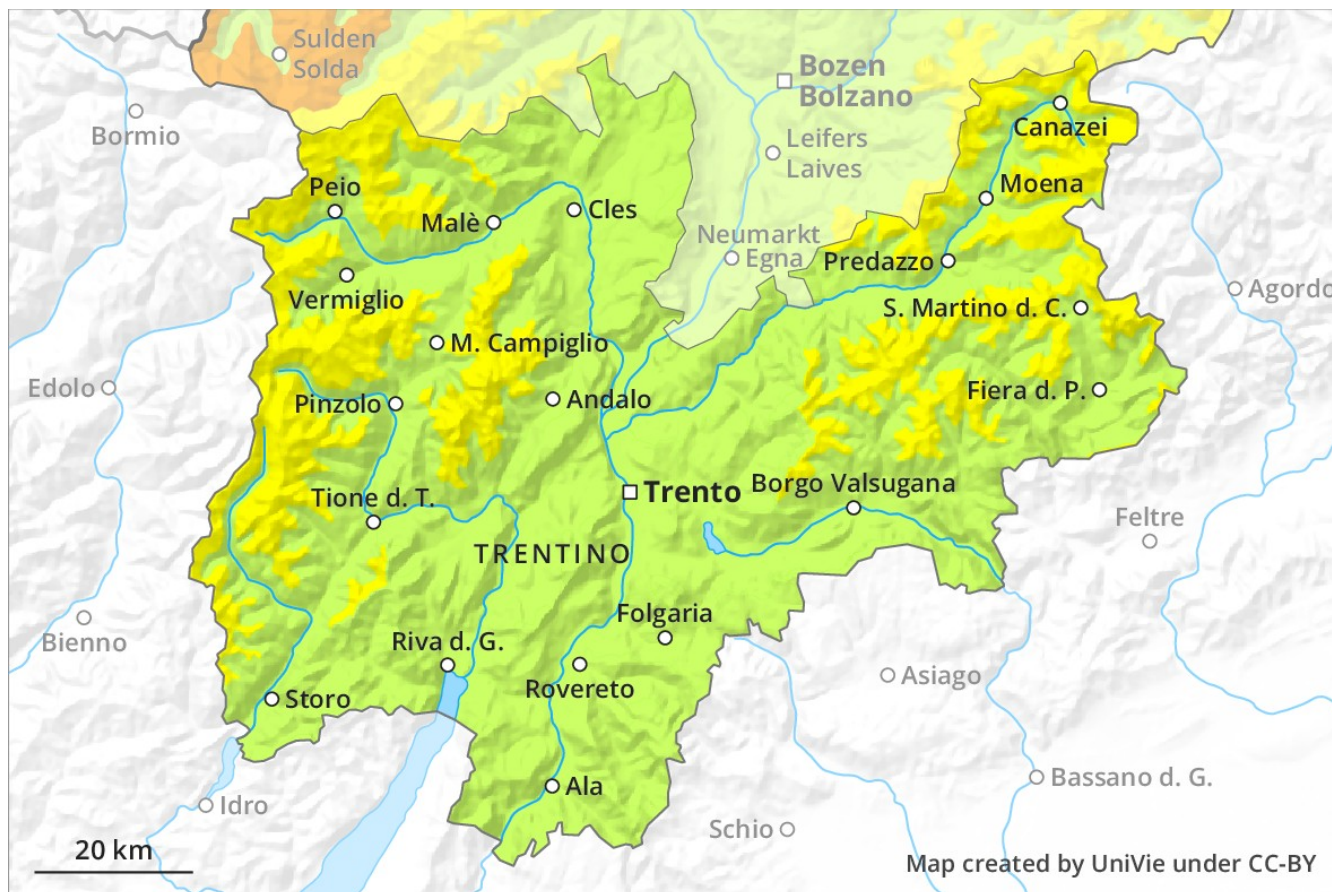
Avalanche Forecast

Thursday 13 12 2018

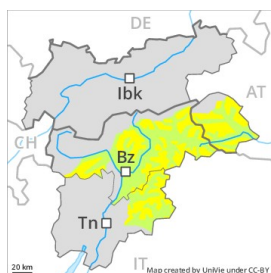
Published 13 12 2018, 15:02



Avalanche.report



Danger Level 2 - Moderate



Tendency: Decreasing avalanche danger
on Friday 14 12 2018



Wind-drifted
snow



Treeline

Fresh wind slabs require caution.

As a consequence of a strong wind from northwesterly directions, sometimes avalanche prone wind slabs formed above the tree line. At elevated altitudes the avalanche prone locations are more prevalent and larger. Weak layers in the upper part of the snowpack can be released in particular in gullies and bowls and behind abrupt changes in the terrain. Avalanches are rather small but can be released by a single winter sport participant. In particular in regions neighbouring those that are subject to danger level 3 (considerable) avalanche prone locations are more prevalent and the danger is greater.

Snowpack

Danger patterns

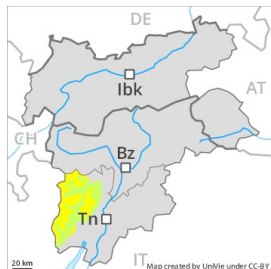
dp 6: cold, loose snow and wind

In particular in the north up to 20 cm of snow. has fallen in the last few days above approximately 2000 m. The wind slabs have settled a little.

Tendency

Further decrease in danger.

Danger Level 2 - Moderate



Tendency: Constant avalanche danger →
on Friday 14 12 2018



Wind-drifted
snow



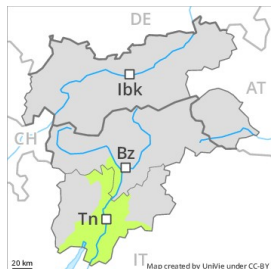
The danger exists in particular in alpine snow sports terrain.

The sometimes avalanche-prone wind slabs of the last few days represent the main danger. They are to be found in particular adjacent to ridgelines in all aspects and in the high Alpine regions. Wind slabs can be released, even by small loads in isolated cases and reach medium size. These avalanche prone locations are to be found in particular on steep slopes above approximately 2200 m, and adjacent to ridgelines and in gullies and bowls in all aspects. Backcountry touring and other off-piste activities call for experience in the assessment of avalanche danger and careful route selection.

Snowpack

Especially in the regions of the north that are exposed to the foehn wind a little fresh snow. The wind has transported the fresh snow and, in some cases, old snow as well. As a consequence of the wind the wind slabs have increased in size additionally. The snowpack will become prone to triggering in particular on wind-loaded slopes.

Danger Level 1 - Low



Tendency: Constant avalanche danger →
on Friday 14 12 2018



Wind-drifted
snow



Treeline

Only a little snow is lying above approximately 1800 m.

The wind slabs represent the main danger. They are mostly shallow and to be assessed with care and prudence. The avalanche prone locations are rather rare and are clearly recognisable to the trained eye.

Snowpack

Above the tree line from a snow sport perspective, in most cases insufficient snow is lying. In some places wind slabs are lying on the smooth surface of an old snowpack. The snowpack remains generally well bonded.

Tendency

The snowpack remains in most cases favourable.