

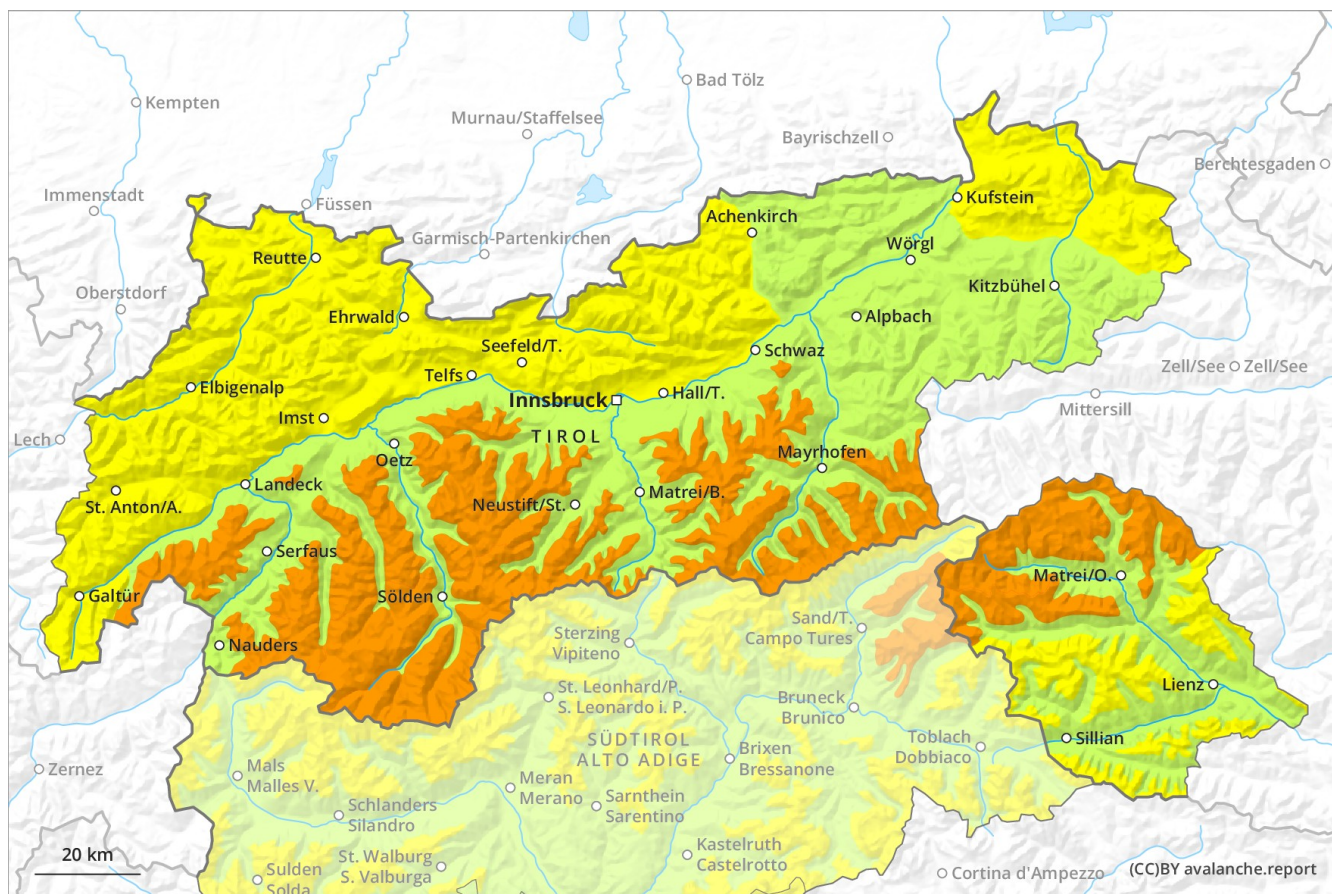
Avalanche Forecast

Friday 14 12 2018

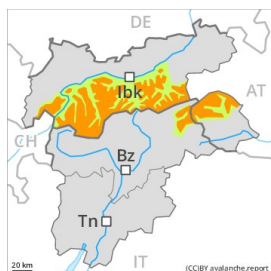
Published 14 12 2018, 10:38



Avalanche.report



Danger Level 3 - Considerable



Tendency: **Constant avalanche danger** on Saturday 15 12 2018 →



Wind-drifted snow



Persistent weak layer



Wind slabs and weakly bonded old snow require caution.

As a consequence of a moderate to strong southerly wind, avalanche prone wind slabs formed on Thursday especially in the regions exposed to the foehn wind. The fresh wind slabs can be released by a single winter sport participant in particular on shady slopes above approximately 2200 m. The fresh wind slabs are clearly recognisable. Weak layers in the lower part of the snowpack can be released especially by large additional loads in particular on very steep shady slopes. This applies between approximately 2300 and 2900 m. Backcountry touring and other off-piste activities call for experience in the assessment of avalanche danger and restraint.

Snowpack

Danger patterns

dp 6: cold, loose snow and wind

dp 1: deep persistent weak layer

The wind was moderate to strong in particular in the regions that are exposed to the foehn wind. Soft weak layers exist in the top section of the snowpack especially in shady places that are protected from the wind. The wind slabs represent the main danger. Faceted weak layers exist in the old snowpack on very steep shady slopes, in particular between approximately 2400 and 2900 m. Whumpfung sounds and the formation of shooting cracks when stepping on the snowpack serve as an alarm indicating the danger.

Tendency

Further decrease in avalanche danger.

Danger Level 2 - Moderate



Tendency: **Constant avalanche danger** on Saturday 15 12 2018 →



Wind-drifted snow



Treeline

Wind slabs represent the main danger.

The somewhat older wind slabs are in individual cases still prone to triggering. At elevated altitudes the avalanche prone locations are more prevalent. Such avalanche prone locations are rather rare and are easy to recognise. In particular in regions neighbouring those that are subject to danger level 3 (considerable) avalanche prone locations are more prevalent and the danger is greater.

Snowpack

Danger patterns

dp 6: cold, loose snow and wind

The wind slabs of last week have bonded quite well with the old snowpack.

Tendency

Further decrease in danger.

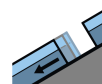
Danger Level 2 - Moderate



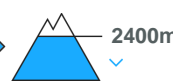
Tendency: **Constant avalanche danger**
on Saturday 15 12 2018 →



Wind-drifted
snow



Gliding snow



Fresh wind slabs require caution. This applies in particular adjacent to ridgelines and in pass areas in the regions of the south that are exposed to the foehn wind. Gliding avalanches and snow slides below approximately 2400 m.

The older wind slabs of the last few days have bonded well with the old snowpack. These can still in isolated cases be released by large loads. In addition the fresh wind slabs should be taken into account. This applies, in particular in the regions of the south that are exposed to the foehn wind. The avalanche prone locations are to be found in particular adjacent to ridgelines and in gullies and bowls above approximately 2200 m. Avalanche prone locations for gliding avalanches are to be found on steep grassy slopes below approximately 2400 m.

Snowpack

Danger patterns

dp 6: cold, loose snow and wind

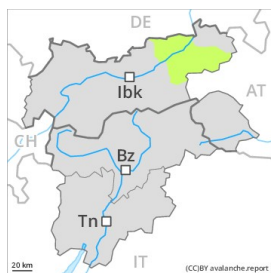
dp 2: gliding snow

The fresh wind slabs are lying on soft layers in particular on steep shady slopes above approximately 2200 m. The old snowpack will be in most cases favourable.

Tendency

Further decrease in avalanche danger.

Danger Level 1 - Low



Tendency: Constant avalanche danger →
on Saturday 15 12 2018



Wind-drifted
snow



Treeline

Low danger will prevail. Fresh wind slabs represent the main danger.

The somewhat older wind slabs of last week are now only very rarely prone to triggering. The avalanche prone locations are rare. This applies adjacent to ridgelines above the tree line as well as on very steep shady slopes. Below the tree line from a snow sport perspective, in most cases insufficient snow is lying.

Snowpack

Danger patterns dp 6: cold, loose snow and wind

The snowpack will be in most cases favourable.

Tendency

Further decrease in avalanche danger.