

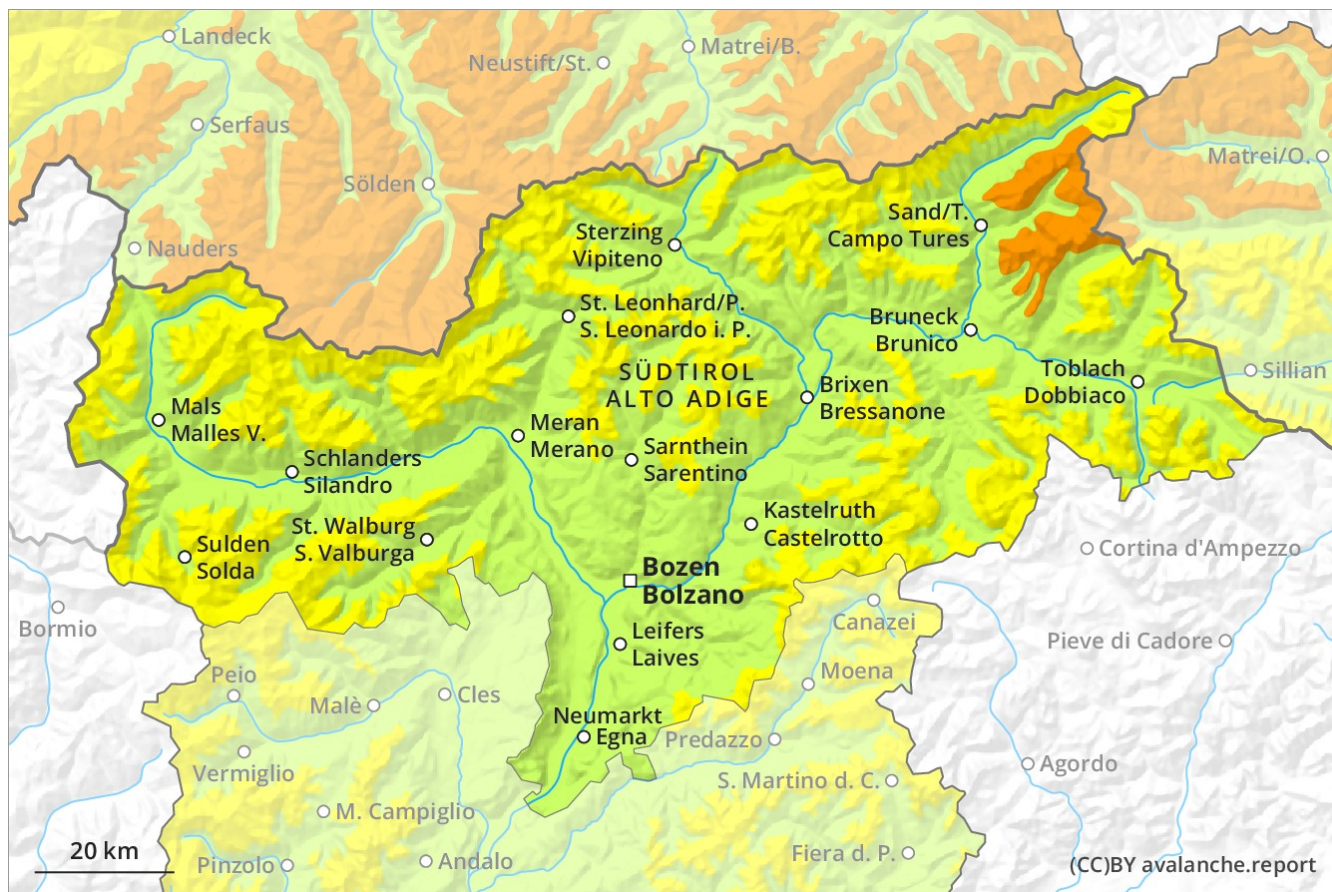
Avalanche Forecast

Friday 14 12 2018

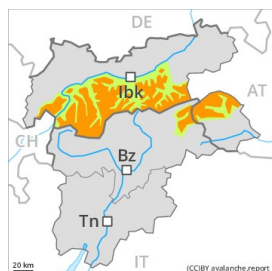
Published 14 12 2018, 10:38



Avalanche.report



Danger Level 3 - Considerable



Tendency: **Constant avalanche danger** on Saturday 15 12 2018 →



Wind-drifted snow



Persistent weak layer



Wind slabs and weakly bonded old snow require caution.

As a consequence of a moderate to strong southerly wind, avalanche prone wind slabs formed on Thursday especially in the regions exposed to the foehn wind. The fresh wind slabs can be released by a single winter sport participant in particular on shady slopes above approximately 2200 m. The fresh wind slabs are clearly recognisable. Weak layers in the lower part of the snowpack can be released especially by large additional loads in particular on very steep shady slopes. This applies between approximately 2300 and 2900 m. Backcountry touring and other off-piste activities call for experience in the assessment of avalanche danger and restraint.

Snowpack

Danger patterns

dp 6: cold, loose snow and wind

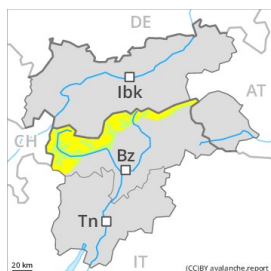
dp 1: deep persistent weak layer

The wind was moderate to strong in particular in the regions that are exposed to the foehn wind. Soft weak layers exist in the top section of the snowpack especially in shady places that are protected from the wind. The wind slabs represent the main danger. Faceted weak layers exist in the old snowpack on very steep shady slopes, in particular between approximately 2400 and 2900 m. Whumpfung sounds and the formation of shooting cracks when stepping on the snowpack serve as an alarm indicating the danger.

Tendency

Further decrease in avalanche danger.

Danger Level 2 - Moderate



Tendency: **Constant avalanche danger** on Saturday 15 12 2018 →



Wind-drifted snow



Treeline

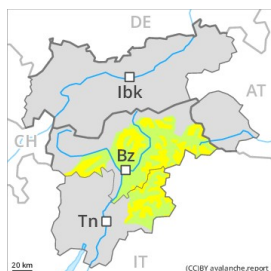
The wind slabs represent the main danger.

The wind slabs of the last few days can be released by a single winter sport participant in all aspects above the tree line. This applies in particular at their margins. The wind slabs are to be found in particular adjacent to ridgelines and in gullies and bowls. Avalanches can be released in the old snowpack in isolated cases. Backcountry touring calls for experience in the assessment of avalanche danger. Steep slopes are to be traversed by snow sport participants one at a time.

Snowpack

The snowpack will be subject to considerable local variations. In some places wind slabs are lying on old snow containing large grains.

Danger Level 2 - Moderate



Tendency: **Decreasing avalanche danger** on Saturday 15 12 2018



Wind-drifted snow



Treeline

Fresh wind slabs require caution.

As a consequence of a strong wind, sometimes avalanche prone wind slabs formed in the last few days above the tree line. At elevated altitudes the avalanche prone locations are more prevalent and larger. Avalanches are rather small but can be released by a single winter sport participant. In particular in the north and in the west avalanche prone locations are more prevalent and the danger is greater.

Snowpack

Danger patterns

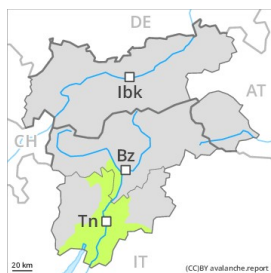
dp 6: cold, loose snow and wind

The snowpack will be subject to considerable local variations. The fresh and older wind slabs of the last few days are clearly recognisable. The wind slabs have settled a little.

Tendency

Further decrease in danger.

Danger Level 1 - Low



Tendency: Constant avalanche danger
on Saturday 15 12 2018



Wind-drifted
snow



Treeline

Only a little snow is lying above approximately 1800 m.

The wind slabs represent the main danger. They are mostly shallow and to be assessed with care and prudence. The avalanche prone locations are rather rare and are clearly recognisable to the trained eye.

Snowpack

Above the tree line from a snow sport perspective, in most cases insufficient snow is lying. In some places wind slabs are lying on the smooth surface of an old snowpack. The snowpack remains generally well bonded.

Tendency

The snowpack remains in most cases favourable.