

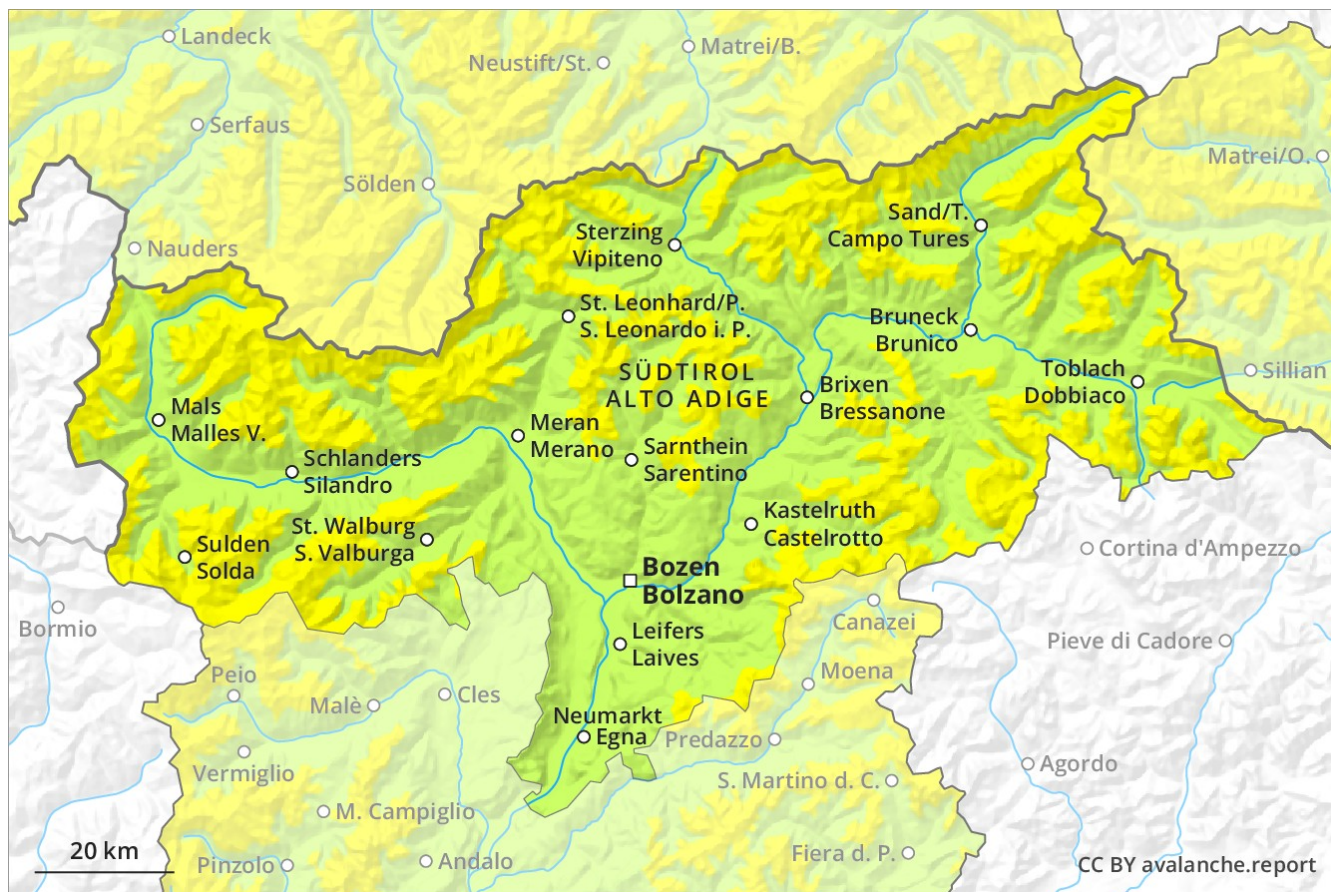
# Avalanche Forecast

## Monday 17 12 2018

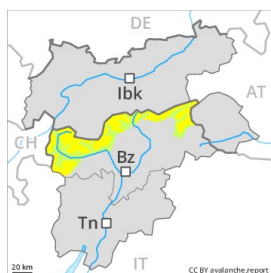
Published 16 12 2018, 17:03



Avalanche.report



## Danger Level 2 - Moderate



**Tendency: Constant avalanche danger** →  
on Tuesday 18 12 2018



Wind-drifted  
snow



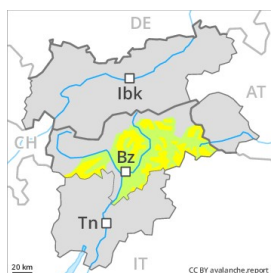
### The wind slabs represent the main danger.

The wind slabs must be evaluated with care and prudence in particular on west to north to east facing aspects above approximately 2200 m. The wind slabs are to be found in particular adjacent to ridgelines and in gullies and bowls. In particular on wind-loaded slopes medium-sized and, in isolated cases, large avalanches are possible. In the west and in the north avalanche prone locations are more prevalent and the danger is greater. Avalanches can be released in the old snowpack in isolated cases. Backcountry touring calls for experience in the assessment of avalanche danger. Apart from the danger of being buried, restraint should be exercised as well in view of the danger of avalanches sweeping people along and giving rise to falls. The avalanche prone locations are sometimes covered with fresh snow and are barely recognisable because of the poor visibility.

### Snowpack

The snowpack will be subject to considerable local variations. Faceted weak layers exist in the old snowpack on steep shady slopes. Whumpfung sounds can indicate the danger. At low and intermediate altitudes thus far only a little snow is lying.

## Danger Level 2 - Moderate



**Tendency: Constant avalanche danger** →  
on Tuesday 18 12 2018



Wind-drifted  
snow



Treeline

### Wind slabs require caution.

As a consequence of a sometimes strong wind, sometimes avalanche prone wind slabs formed in the last few days above the tree line. At elevated altitudes the avalanche prone locations are more prevalent and larger. Avalanches are rather small but can be released by a single winter sport participant. In particular in the north and in the west avalanche prone locations are more prevalent and the danger is greater. These avalanche prone locations are rather rare and are clearly recognisable to the trained eye. Apart from the danger of being buried, restraint should be exercised as well in view of the danger of avalanches sweeping people along and giving rise to falls.

### Snowpack

#### Danger patterns

dp 6: cold, loose snow and wind

The snowpack will be subject to considerable local variations. The mostly small wind slabs have bonded quite well with the old snowpack. The fresh and older wind slabs of the last few days are clearly recognisable. From a snow sport perspective, in most cases insufficient snow is lying.

### Tendency

Further decrease in danger.

## Danger Level 1 - Low



**Tendency: Constant avalanche danger** →  
on Tuesday 18 12 2018



Wind-drifted  
snow



Treeline

Only a little snow is lying.

The avalanche prone locations are rare. Individual avalanche prone locations are to be found in extremely steep terrain. Even a small avalanche can sweep snow sport participants along and give rise to falls.

### Snowpack

Above the tree line from a snow sport perspective, in most cases insufficient snow is lying.

### Tendency

The snowpack remains in most cases favourable.