

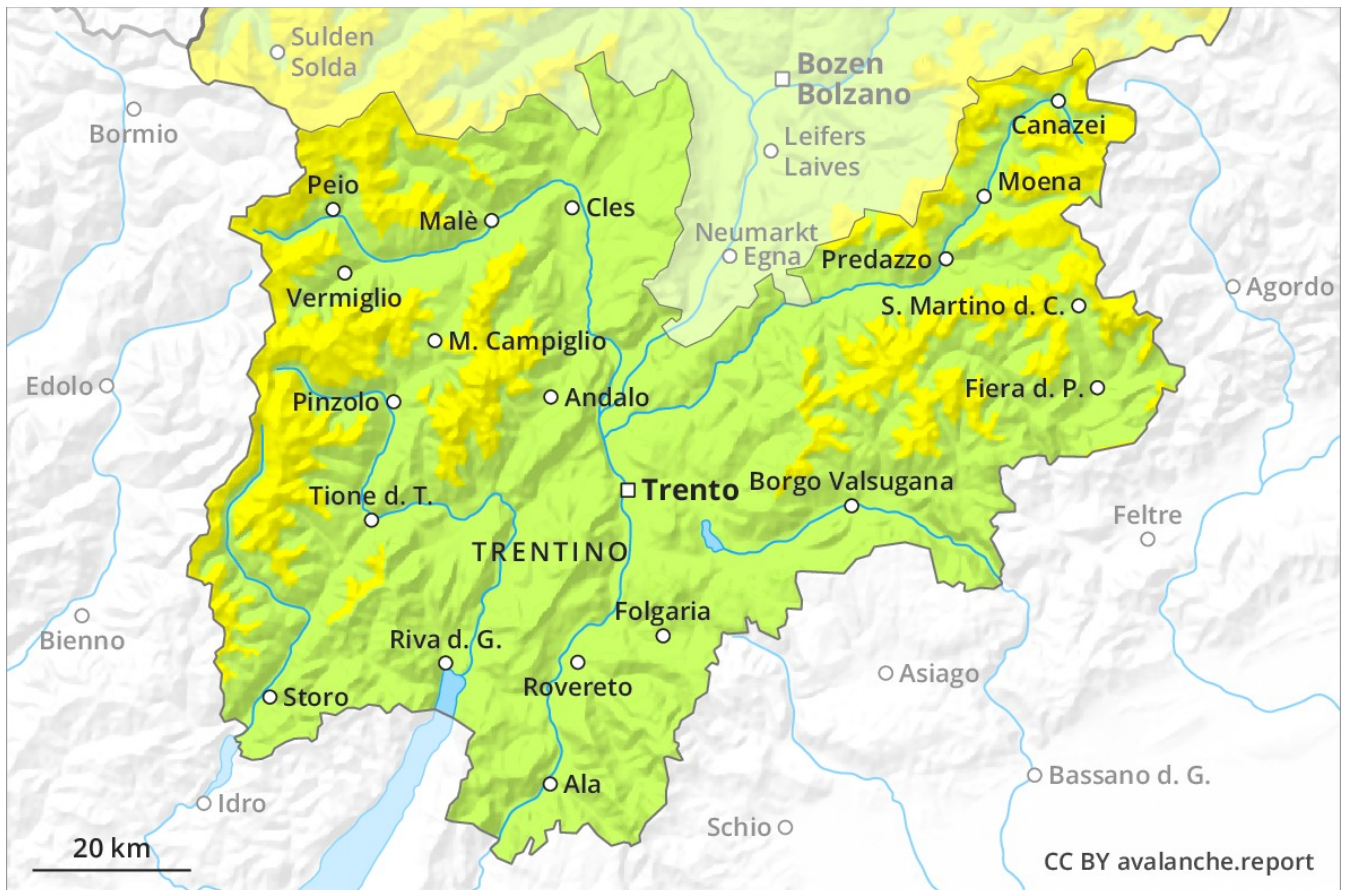
Avalanche Forecast

Monday 17 12 2018

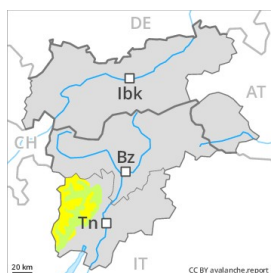
Published 16 12 2018, 17:00



Avalanche.report



Danger Level 2 - Moderate



Tendency: Constant avalanche danger →
on Tuesday 18 12 2018



Wind-drifted
snow



The danger exists in particular in alpine snow sports terrain.

The sometimes avalanche-prone wind slabs of the last few days represent the main danger. They are to be found in particular adjacent to ridgelines in all aspects and in the high Alpine regions. Wind slabs can be released, in particular by large loads and reach medium size. These avalanche prone locations are to be found in particular on steep slopes above approximately 2200 m, and adjacent to ridgelines and in gullies and bowls in all aspects. Backcountry touring and other off-piste activities call for experience in the assessment of avalanche danger and careful route selection.

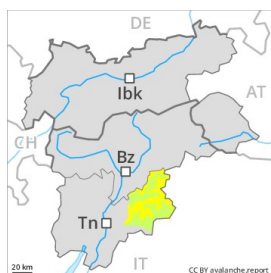
Snowpack

Also in the regions of the north that are exposed to the foehn wind a little fresh snow. The wind has transported the fresh snow and, in some cases, old snow as well. The snowpack remains prone to triggering especially on wind-loaded slopes.

Tendency

The avalanche conditions remain mostly favourable.

Danger Level 2 - Moderate



Tendency: Constant avalanche danger →
on Tuesday 18 12 2018



Wind-drifted
snow



Wind slabs require caution.

As a consequence of a moderate wind, mostly shallow wind slabs formed in the last few days in particular above approximately 2200 m. At elevated altitudes the avalanche prone locations are more prevalent and larger. In particular in the north avalanche prone locations are more prevalent and the danger is greater. These avalanche prone locations are rather rare and are clearly recognisable to the trained eye. Apart from the danger of being buried, restraint should be exercised as well in view of the danger of avalanches sweeping people along and giving rise to falls.

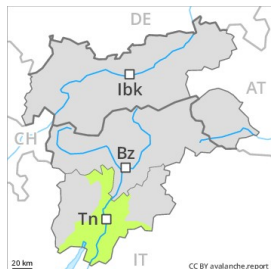
Snowpack

The snowpack will be subject to considerable local variations. The mostly small wind slabs have bonded quite well with the old snowpack. The fresh and older wind slabs of the last few days are clearly recognisable. From a snow sport perspective, in most cases insufficient snow is lying.

Tendency

The avalanche conditions remain mostly favourable.

Danger Level 1 - Low



Tendency: Constant avalanche danger →
on Tuesday 18 12 2018



Wind-drifted
snow



Treeline

Only a little snow is lying.

The avalanche prone locations are rare and are clearly recognisable to the trained eye. Individual avalanche prone locations are to be found in extremely steep terrain. Even a small avalanche can sweep snow sport participants along and give rise to falls.

Snowpack

Above the tree line from a snow sport perspective, in most cases insufficient snow is lying.

Tendency

Some snow will fall during the night especially in the south and in the southeast. The snowpack remains favourable.