

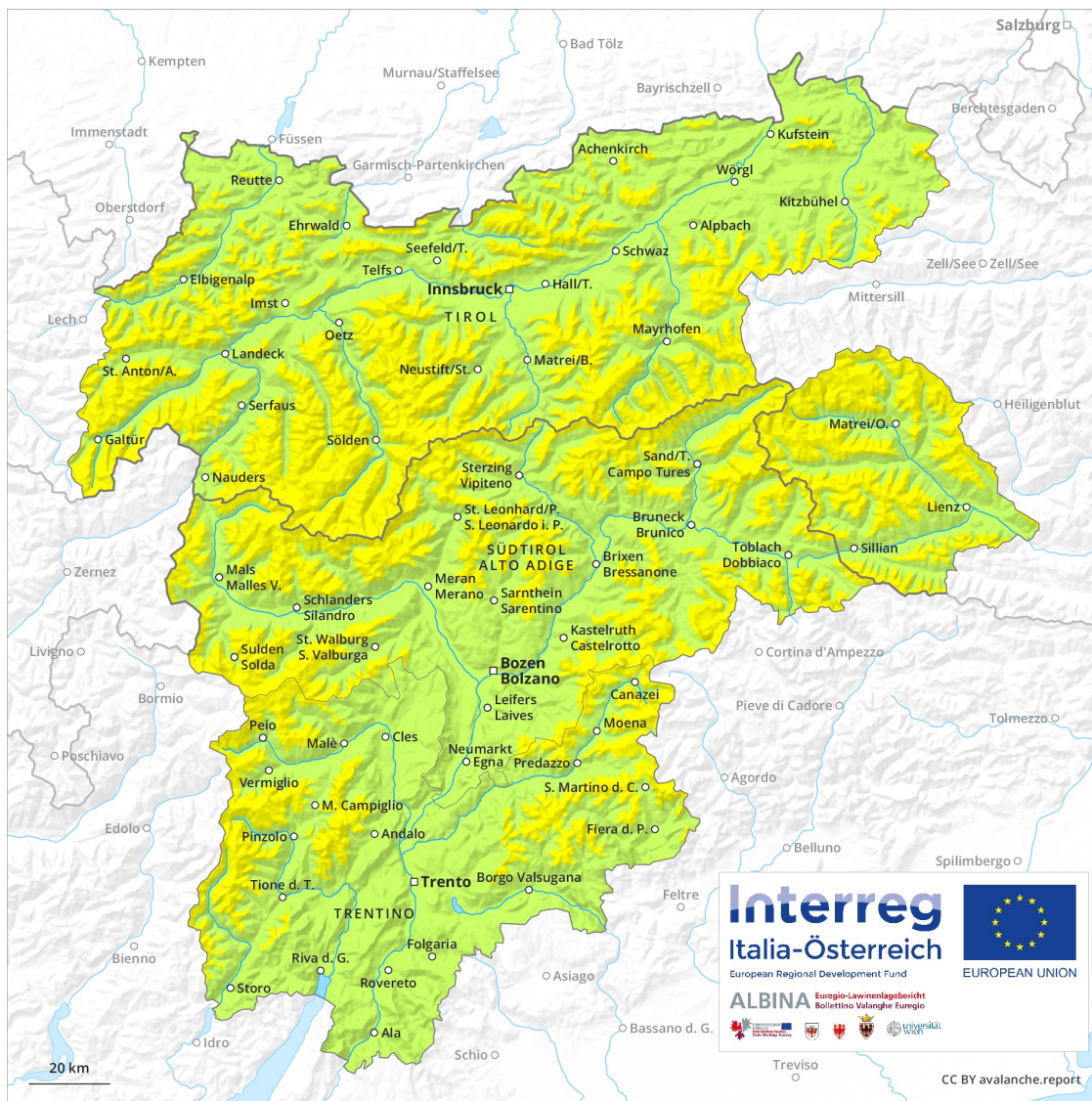
Avalanche Forecast

Monday 17 12 2018

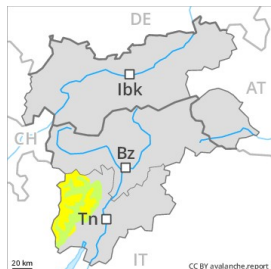
Published 16 12 2018, 17:03



Avalanche.report



Danger Level 2 - Moderate



Tendency: Constant avalanche danger →
on Tuesday 18 12 2018



Wind-drifted
snow



The danger exists in particular in alpine snow sports terrain.

The sometimes avalanche-prone wind slabs of the last few days represent the main danger. They are to be found in particular adjacent to ridgelines in all aspects and in the high Alpine regions. Wind slabs can be released, in particular by large loads and reach medium size. These avalanche prone locations are to be found in particular on steep slopes above approximately 2200 m, and adjacent to ridgelines and in gullies and bowls in all aspects. Backcountry touring and other off-piste activities call for experience in the assessment of avalanche danger and careful route selection.

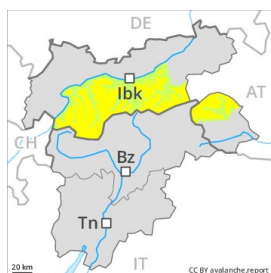
Snowpack

Also in the regions of the north that are exposed to the foehn wind a little fresh snow. The wind has transported the fresh snow and, in some cases, old snow as well. The snowpack remains prone to triggering especially on wind-loaded slopes.

Tendency

The avalanche conditions remain mostly favourable.

Danger Level 2 - Moderate



Tendency: Constant avalanche danger →
 on Tuesday 18 12 2018



Wind-drifted
 snow



Treeline



Persistent
 weak layer



2300m
 2800m

Fresh wind slabs represent the main danger. This applies in particular above the tree line. Weakly bonded old snow requires caution, in particular above approximately 2300 m and below approximately 2800 m.

As a consequence of a moderate to strong wind from westerly directions, clearly visible wind slabs formed above the tree line. The fresh wind slabs are rather small but can be released easily. The avalanche prone locations are to be found in particular adjacent to ridgelines and in gullies and bowls in northwest to north to southeast facing aspects. At high altitudes and in high Alpine regions and in the regions exposed to the foehn wind avalanche prone locations are more prevalent. Also places where surface hoar has been covered with snow are critical, in particular in areas close to the tree line,, also below the tree line, in particular, west of the Sill. Weak layers in the old snowpack can be released in some places by winter sport participants on steep west, north and east facing slopes, in particular between approximately 2300 and 2800 m.

Snowpack

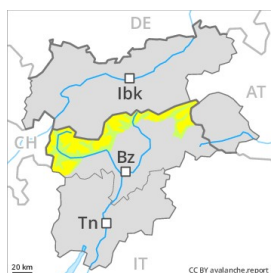
Danger patterns

dp 6: cold, loose snow and wind

dp 1: deep persistent weak layer

The snowpack will be in some cases prone to triggering. Soft weak layers exist in the top section of the snowpack. The fresh snow of Sunday is lying on surface hoar in some places in areas close to the tree line. Faceted weak layers exist in the old snowpack on steep west, north and east facing slopes, in particular above approximately 2300 m and below approximately 2800 m. Isolated whumping sounds indicate the danger.

Danger Level 2 - Moderate



Tendency: **Constant avalanche danger** →
on Tuesday 18 12 2018



Wind-drifted
snow



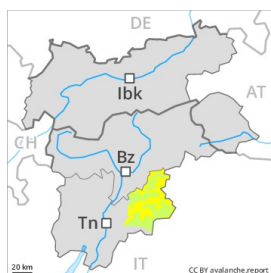
The wind slabs represent the main danger.

The wind slabs must be evaluated with care and prudence in particular on west to north to east facing aspects above approximately 2200 m. The wind slabs are to be found in particular adjacent to ridgelines and in gullies and bowls. In particular on wind-loaded slopes medium-sized and, in isolated cases, large avalanches are possible. In the west and in the north avalanche prone locations are more prevalent and the danger is greater. Avalanches can be released in the old snowpack in isolated cases. Backcountry touring calls for experience in the assessment of avalanche danger. Apart from the danger of being buried, restraint should be exercised as well in view of the danger of avalanches sweeping people along and giving rise to falls. The avalanche prone locations are sometimes covered with fresh snow and are barely recognisable because of the poor visibility.

Snowpack

The snowpack will be subject to considerable local variations. Faceted weak layers exist in the old snowpack on steep shady slopes. Whumpfung sounds can indicate the danger. At low and intermediate altitudes thus far only a little snow is lying.

Danger Level 2 - Moderate



Tendency: Constant avalanche danger →
on Tuesday 18 12 2018



Wind-drifted
snow



Wind slabs require caution.

As a consequence of a moderate wind, mostly shallow wind slabs formed in the last few days in particular above approximately 2200 m. At elevated altitudes the avalanche prone locations are more prevalent and larger. In particular in the north avalanche prone locations are more prevalent and the danger is greater. These avalanche prone locations are rather rare and are clearly recognisable to the trained eye. Apart from the danger of being buried, restraint should be exercised as well in view of the danger of avalanches sweeping people along and giving rise to falls.

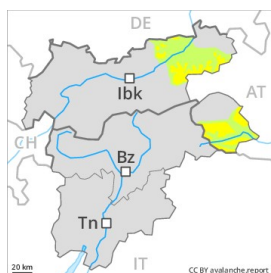
Snowpack

The snowpack will be subject to considerable local variations. The mostly small wind slabs have bonded quite well with the old snowpack. The fresh and older wind slabs of the last few days are clearly recognisable. From a snow sport perspective, in most cases insufficient snow is lying.

Tendency

The avalanche conditions remain mostly favourable.

Danger Level 2 - Moderate



Tendency: Constant avalanche danger →
on Tuesday 18 12 2018



Wind-drifted
snow



Treeline

Fresh wind slabs represent the main danger. This applies above the tree line.

As a consequence of a moderate to strong northwesterly wind, clearly visible wind slabs will form above the tree line. The fresh wind slabs are mostly small but prone to triggering. The avalanche prone locations are to be found in particular adjacent to ridgelines and in gullies and bowls in northwest to north to southeast facing aspects. At intermediate and high altitudes avalanche prone locations are more prevalent.

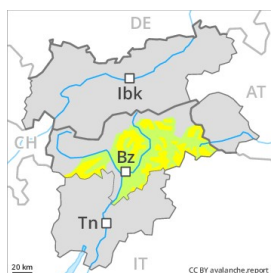
Snowpack

Danger patterns

dp 6: cold, loose snow and wind

Soft weak layers exist in the top section of the snowpack. Wind slabs will be deposited on surface hoar in some places, in particular in the Brandenberg Alps and in the Western Kitzbühel Alps. The snowpack will be subject to considerable local variations. At low altitude from a snow sport perspective, in most cases insufficient snow is lying.

Danger Level 2 - Moderate



Tendency: Constant avalanche danger →
on Tuesday 18 12 2018



Wind-drifted
snow



Wind slabs require caution.

As a consequence of a sometimes strong wind, sometimes avalanche prone wind slabs formed in the last few days above the tree line. At elevated altitudes the avalanche prone locations are more prevalent and larger. Avalanches are rather small but can be released by a single winter sport participant. In particular in the north and in the west avalanche prone locations are more prevalent and the danger is greater. These avalanche prone locations are rather rare and are clearly recognisable to the trained eye. Apart from the danger of being buried, restraint should be exercised as well in view of the danger of avalanches sweeping people along and giving rise to falls.

Snowpack

Danger patterns

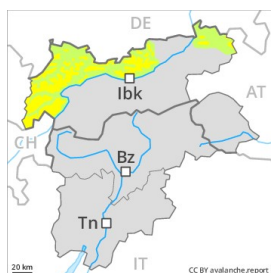
dp 6: cold, loose snow and wind

The snowpack will be subject to considerable local variations. The mostly small wind slabs have bonded quite well with the old snowpack. The fresh and older wind slabs of the last few days are clearly recognisable. From a snow sport perspective, in most cases insufficient snow is lying.

Tendency

Further decrease in danger.

Danger Level 2 - Moderate



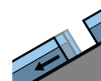
Tendency: Constant avalanche danger →
 on Tuesday 18 12 2018



Wind-drifted
 snow



Treeline



Gliding snow



2400m

Fresh wind slabs represent the main danger. This applies in particular above the tree line. Gliding snow requires caution.

As a consequence of a moderate to strong wind from westerly directions, clearly visible wind slabs formed above the tree line. The fresh wind slabs are mostly small but to be assessed with care and prudence. The avalanche prone locations are to be found in particular adjacent to ridgelines and in gullies and bowls in northwest to north to southeast facing aspects. At high altitudes and in high Alpine regions avalanche prone locations are more prevalent and the danger is slightly greater. Also places where surface hoar has been covered with snow are critical, in particular in areas close to the tree line,, also below the tree line.

Snowpack

Danger patterns

dp 6: cold, loose snow and wind

dp 2: gliding snow

Soft weak layers exist in the top section of the snowpack. The fresh snow of Sunday is lying on surface hoar in some places in areas close to the tree line.

Danger Level 1 - Low



Tendency: Constant avalanche danger →
on Tuesday 18 12 2018



Wind-drifted
snow



Treeline

Only a little snow is lying.

The avalanche prone locations are rare. Individual avalanche prone locations are to be found in extremely steep terrain. Even a small avalanche can sweep snow sport participants along and give rise to falls.

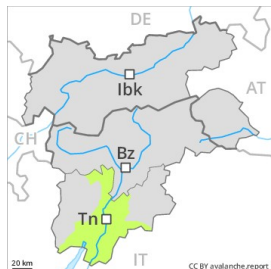
Snowpack

Above the tree line from a snow sport perspective, in most cases insufficient snow is lying.

Tendency

The snowpack remains in most cases favourable.

Danger Level 1 - Low



Tendency: Constant avalanche danger →
on Tuesday 18 12 2018



Wind-drifted
snow



Treeline

Only a little snow is lying.

The avalanche prone locations are rare and are clearly recognisable to the trained eye. Individual avalanche prone locations are to be found in extremely steep terrain. Even a small avalanche can sweep snow sport participants along and give rise to falls.

Snowpack

Above the tree line from a snow sport perspective, in most cases insufficient snow is lying.

Tendency

Some snow will fall during the night especially in the south and in the southeast. The snowpack remains favourable.