

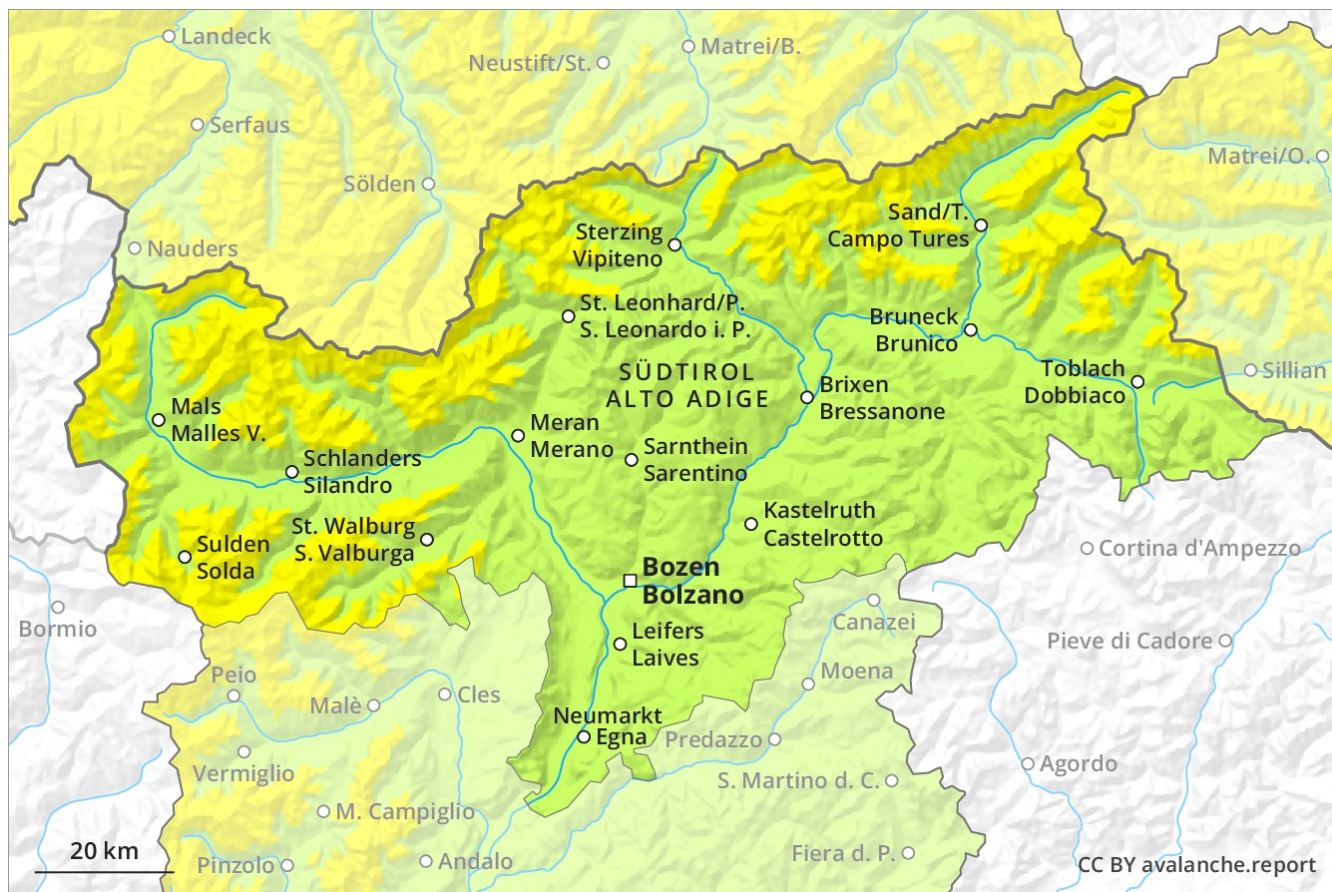
# Avalanche Forecast

## Thursday 20 12 2018

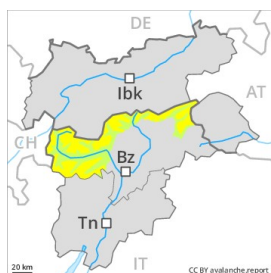
Published 19 12 2018, 17:00



Avalanche.report



## Danger Level 2 - Moderate



**Tendency: Constant avalanche danger** →

on Friday 21 12 2018



Wind-drifted  
snow



Persistent  
weak layer



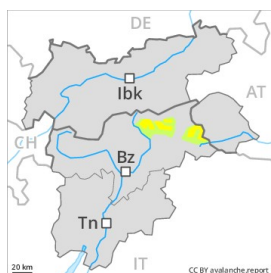
On shady slopes a dangerous avalanche situation will persist in some regions.

The wind slabs must be evaluated with care and prudence in particular on west to north to east facing aspects above approximately 2200 m. The somewhat older wind slabs are to be found in particular adjacent to ridgelines and in gullies and bowls and generally in the high Alpine regions. Dry avalanches can be released in the weakly bonded old snow on rather lightly snow-covered east, north and west facing slopes. Backcountry touring calls for experience in the assessment of avalanche danger.

### Snowpack

The snowpack will be subject to considerable local variations. Isolated avalanche prone weak layers exist in the old snowpack especially above approximately 2400 m. At low and intermediate altitudes thus far only a little snow is lying.

## Danger Level 2 - Moderate



**Tendency: Decreasing avalanche danger**  
on Friday 21 12 2018



Wind-drifted  
snow



### Fresh wind slabs represent the main danger.

As a consequence of a moderate to strong wind from westerly directions, clearly visible wind slabs formed in the last few days above the tree line. The fresh wind slabs are mostly small but prone to triggering. The avalanche prone locations are to be found in particular adjacent to ridgelines and in gullies and bowls in northwest to north to east facing aspects. At high altitude avalanche prone locations are more prevalent.

### Snowpack

#### Danger patterns

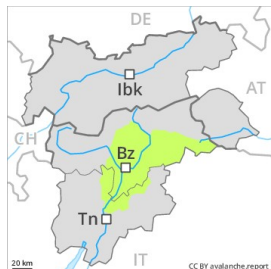
dp 6: cold, loose snow and wind

Soft weak layers exist in the top section of the snowpack. The fresh wind slabs are lying on surface hoar in some places. The snowpack will be subject to considerable local variations. No distinct weak layers exist in the bottom section of the snowpack. At low altitude from a snow sport perspective, in most cases insufficient snow is lying.

### Tendency

Slight decrease in avalanche danger.

## Danger Level 1 - Low



**Tendency: Constant avalanche danger** →  
on Friday 21 12 2018



Wind-drifted  
snow



### Hardly any snow is lying.

Caution is to be exercised in particular adjacent to ridgelines and in gullies and bowls and on wind-loaded slopes. The avalanche prone locations are very rare and are clearly recognisable to the trained eye. Apart from the danger of being buried, restraint should be exercised in particular in view of the danger of avalanches sweeping people along and giving rise to falls.

### Snowpack

The snowpack will be subject to considerable local variations. In all altitude zones from a snow sport perspective, in most cases insufficient snow is lying.

### Tendency

Especially in shady places that are protected from the wind the avalanche prone locations will become more prevalent during the second half of the night.