

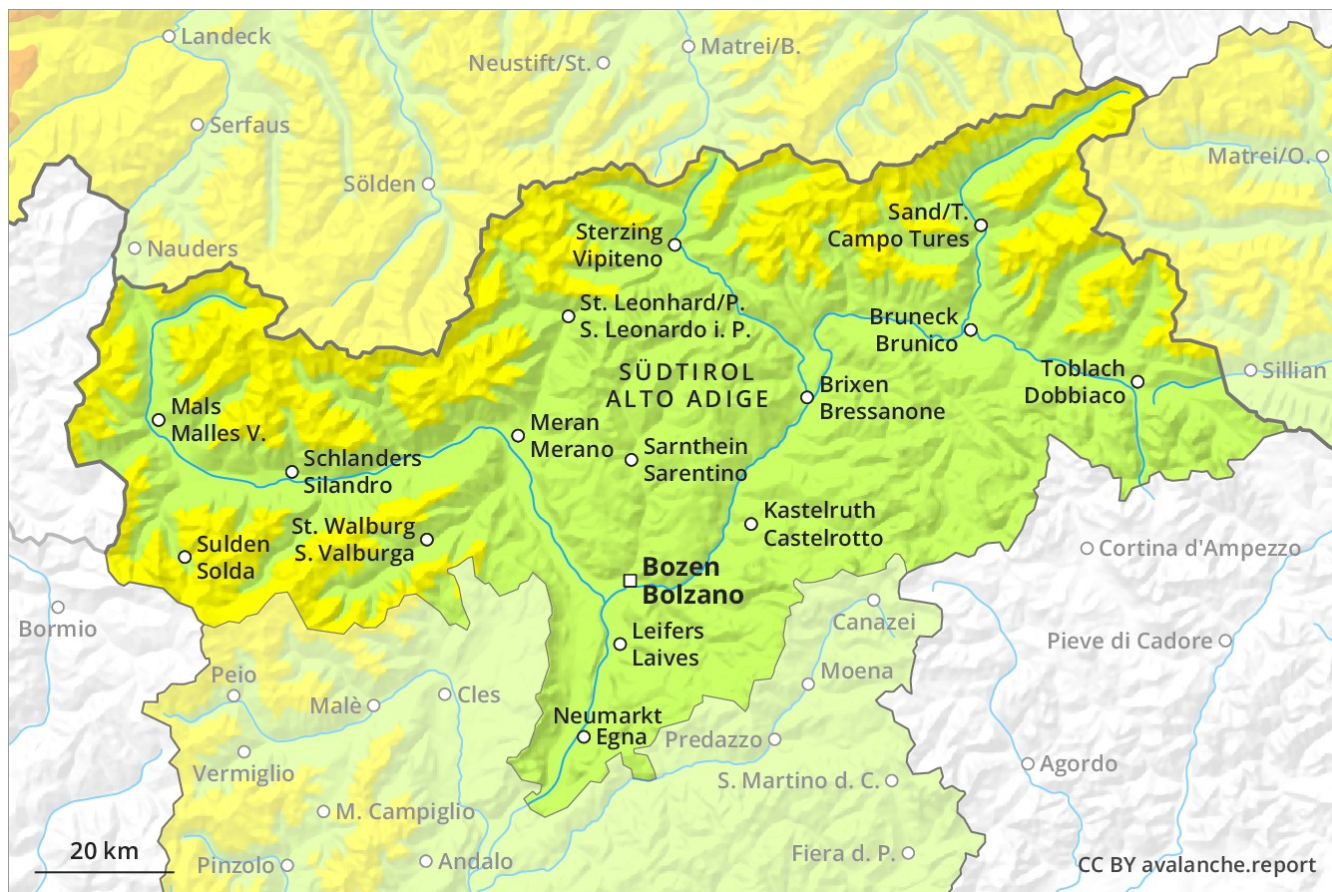
Avalanche Forecast

Saturday 22 12 2018

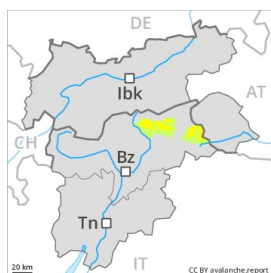
Published 21 12 2018, 17:00



Avalanche.report



Danger Level 2 - Moderate



Tendency: Constant avalanche danger →
on Sunday 23 12 2018



Wind-drifted
snow



Persistent
weak layer



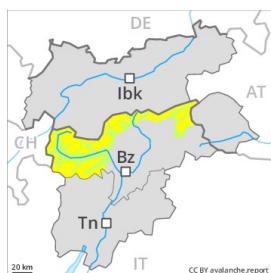
The sometimes storm force wind will transport the loosely bonded old snow.

The fresh wind slabs will be deposited on the unfavourable surface of an old snowpack. They can sometimes be released, even by a single winter sport participant. Mostly small natural avalanches are possible in very isolated cases. Faceted weak layers exist in the old snowpack in particular above approximately 2400 m. Weak layers in the old snowpack can be released in isolated cases by winter sport participants on steep, rather lightly snow-covered west, north and east facing slopes.

Snowpack

The wind will be strong to storm force. Whumpfung sounds and the formation of shooting cracks when stepping on the snowpack are a clear indication of a weakly bonded snowpack. Below approximately 2000 m thus far only a little snow is lying.

Danger Level 2 - Moderate



Tendency: Constant avalanche danger →
on Sunday 23 12 2018



Wind-drifted
snow



Treeline



Persistent
weak layer



2400m

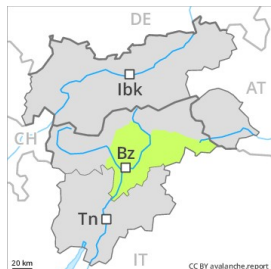
The sometimes storm force wind will transport the fresh and old snow significantly.

The fresh wind slabs will be deposited on the unfavourable surface of an old snowpack in all aspects. They can sometimes be released, even by a single winter sport participant. Mostly small natural avalanches are possible especially on wind-loaded slopes. Faceted weak layers exist in the old snowpack in particular above approximately 2400 m. Weak layers in the old snowpack can be released in isolated cases by winter sport participants on steep, rather lightly snow-covered west, north and east facing slopes.

Snowpack

Along the border with Tirol light snowfall above approximately 1500 m. The wind will be strong to storm force. Whumpung sounds and the formation of shooting cracks when stepping on the snowpack are a clear indication of a weakly bonded snowpack.

Danger Level 1 - Low



Tendency: Constant avalanche danger →
on Sunday 23 12 2018



Wind-drifted
snow



Persistent
weak layer



The sometimes storm force wind will transport the loosely bonded old snow.

The fresh wind slabs will be deposited on the unfavourable surface of an old snowpack. They can in very isolated cases be released, even by a single winter sport participant, but they will be small in most cases. Faceted weak layers exist in the old snowpack in particular above approximately 2400 m. Weak layers in the old snowpack can be released especially by large additional loads on steep, rather lightly snow-covered west, north and east facing slopes.

Snowpack

The wind will be strong to storm force. At low and intermediate altitudes hardly any snow is lying. The avalanche prone locations are to be found in particular on northeast to north to south facing wind-loaded slopes above approximately 2200 m. These places are rather rare and are easy to recognise.