

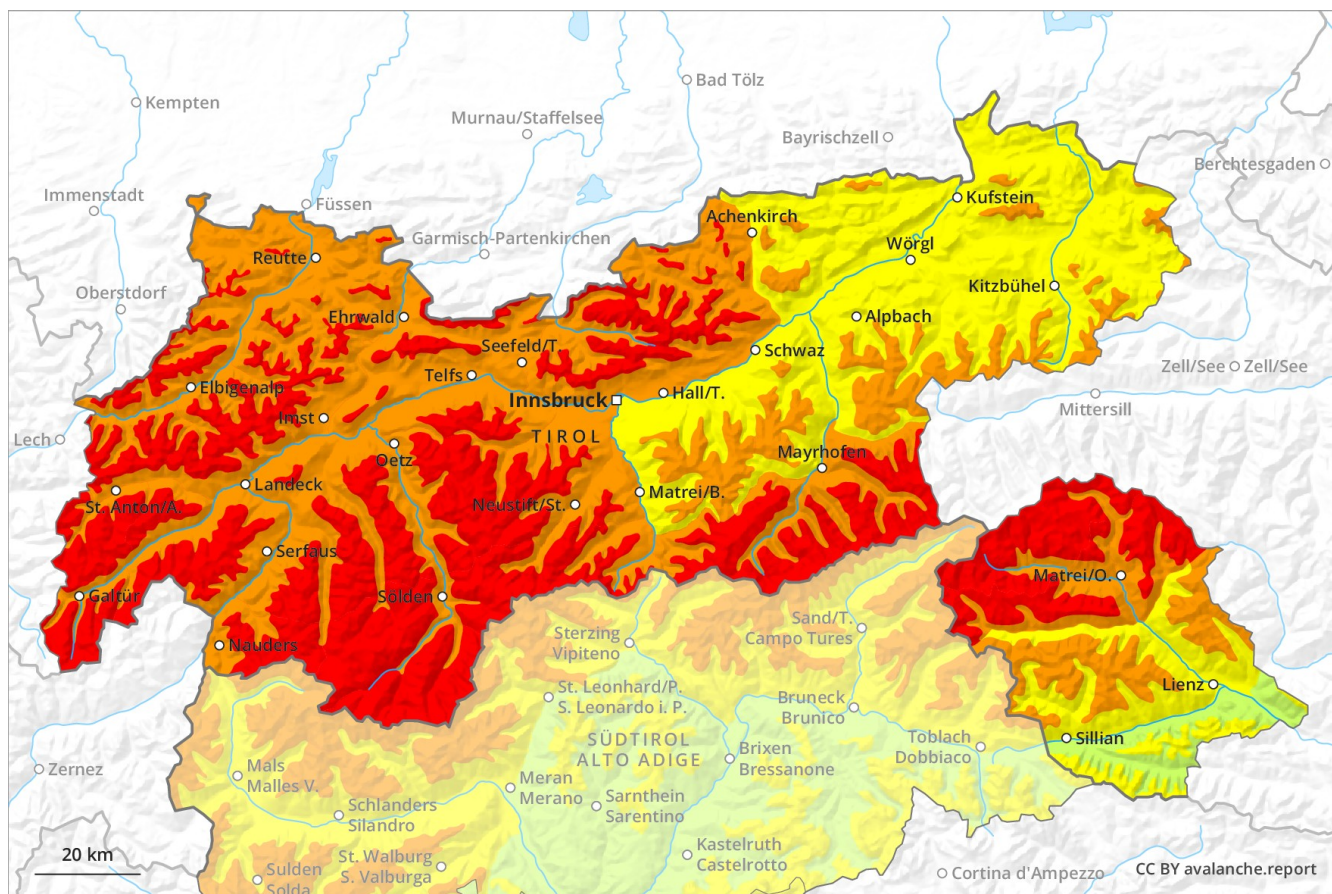
# Avalanche Forecast

## Monday 24 12 2018

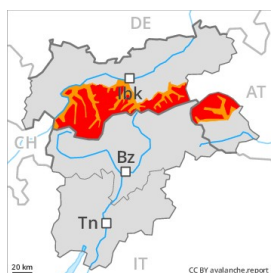
Published 23 12 2018, 17:00



Avalanche.report



## Danger Level 4 - High



**Tendency: Decreasing avalanche danger**  
on Tuesday 25 12 2018



Wind-drifted  
snow



Treeline



Persistent  
weak layer



2800m  
2000m

Significant increase in avalanche danger as a consequence of fresh snow and stormy weather.

As a consequence of fresh snow and a strong westerly wind, extensive wind slabs will form on Monday in all aspects. The fresh wind slabs can be released, even by a single winter sport participant and reach large size in isolated cases. The number and size of avalanche prone locations will increase at high altitude and in the high Alpine regions. These avalanche prone locations are barely recognisable because of the poor visibility. Weak layers in the lower part of the snowpack can be released in some places by winter sport participants on steep west, north and east facing slopes, in particular between approximately 2000 and 2800 m. For the time being, it is inadvisable to engage in backcountry touring and other off-piste activities outside marked and open pistes.

## Snowpack

### Danger patterns

dp 6: cold, loose snow and wind

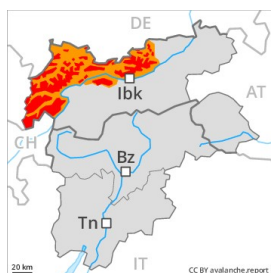
dp 1: deep persistent weak layer

Over a wide area 50 cm of snow, and even more in some localities, will fall above approximately 1800 m. The snowpack will become increasingly prone to triggering. The brittle wind slabs can be released easily, or in isolated cases naturally, in all aspects above the tree line. Faceted weak layers exist in the old snowpack on steep west, north and east facing slopes, in particular above approximately 2000 m and below approximately 2800 m. Whumpfung sounds serve as an alarm indicating the danger.

## Tendency

Gradual decrease in avalanche danger as the snowfall eases.

## Danger Level 4 - High



**Tendency: Decreasing avalanche danger**  
 on Tuesday 25 12 2018



Wind-drifted  
 snow



Treeline



Gliding snow



2000m

As the snowfall becomes more intense there will be an increase in the avalanche danger to level 4 (high).

On Monday as a consequence of fresh snow and stormy weather there will be an appreciable increase in the avalanche danger to level 4 (high). Avalanche prone wind slabs will form. This applies in all aspects especially above approximately 2000 m. On steep slopes the dry avalanches can be released easily and reach large size in isolated cases. The number and size of avalanche prone locations will increase with altitude. As a consequence of the rain, the likelihood of gliding avalanches and moist snow slides being released will increase below approximately 2000 m. Areas with glide cracks are to be avoided as far as possible.

### Snowpack

**Danger patterns**

dp 6: cold, loose snow and wind

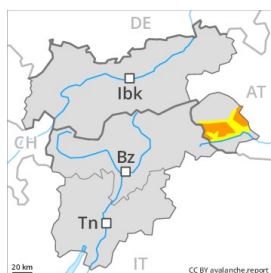
dp 2: gliding snow

Over a wide area 50 to 70 cm of snow, and even more in some localities, will fall above approximately 1800 m. The fresh snow and wind slabs will be deposited on soft layers above approximately 1800 m. On Monday the wind slabs will increase in size substantially. The fresh wind slabs are in many cases thick and prone to triggering.

### Tendency

Gradual decrease in avalanche danger as the snowfall eases.

## Danger Level 3 - Considerable



**Tendency: Decreasing avalanche danger**  
on Tuesday 25 12 2018



Wind-drifted  
snow



Treeline



Gliding snow



2000m

On Monday as a consequence of fresh snow and strong wind there will be an appreciable increase in the avalanche danger.

On Monday as a consequence of the storm force westerly wind there will be a gradual increase in the avalanche danger to level 3 (considerable). On steep slopes the dry avalanches can be released easily and reach medium size in some cases. The number and size of avalanche prone locations will increase with altitude. As a consequence of the rain, the likelihood of gliding avalanches and moist snow slides being released will increase below approximately 2000 m. Areas with glide cracks are to be avoided as far as possible.

## Snowpack

### Danger patterns

dp 6: cold, loose snow and wind

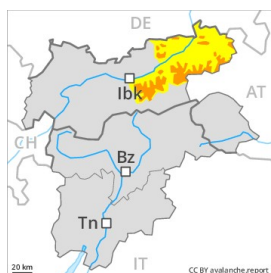
dp 2: gliding snow

Over a wide area 30 cm of snow, and even more in some localities, will fall above approximately 1800 m. The snowpack will be subject to considerable local variations. The fresh snow and wind slabs will be deposited on soft layers. The fresh wind slabs are in isolated cases quite large and prone to triggering.

## Tendency

Gradual decrease in avalanche danger as the snowfall eases.

## Danger Level 3 - Considerable



**Tendency: Decreasing avalanche danger**  
 on Tuesday 25 12 2018



Wind-drifted  
 snow



Treeline



Gliding snow



2000m

On Monday as a consequence of fresh snow and strong wind there will be an appreciable increase in the avalanche danger.

On Monday as a consequence of the storm force westerly wind there will be an increase in the avalanche danger for a short time to level 3 (considerable). In all aspects avalanches can be released easily and reach medium size. The number and size of avalanche prone locations will increase with altitude. As a consequence of the rain, the likelihood of gliding avalanches and moist snow slides being released will increase below approximately 2000 m. Areas with glide cracks are to be avoided as far as possible.

### Snowpack

**Danger patterns**

dp 6: cold, loose snow and wind

dp 2: gliding snow

Over a wide area 50 cm of snow, and even more in some localities, will fall above approximately 1600 m. On Monday the wind slabs will increase in size appreciably. The fresh wind slabs are in many cases dangerously large and prone to triggering.

### Tendency

Gradual decrease in avalanche danger as the snowfall eases.

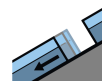
## Danger Level 2 - Moderate



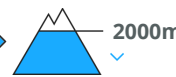
**Tendency: Constant avalanche danger** →  
on Tuesday 25 12 2018



Wind-drifted  
snow



Gliding snow



Only a little snow is lying at low and intermediate altitudes.

Caution is to be exercised in particular adjacent to ridgelines and in gullies and bowls and on wind-loaded slopes. The avalanche prone locations are clearly recognisable to the trained eye. Apart from the danger of being buried, restraint should be exercised in particular in view of the danger of avalanches sweeping people along and giving rise to falls.

### Snowpack

**Danger patterns**

dp 6: cold, loose snow and wind

dp 2: gliding snow

Some snow will fall in some localities. The snowpack will be subject to considerable local variations. In all altitude zones from a snow sport perspective, in most cases insufficient snow is lying.

### Tendency

In places where more snow falls danger level 2 (moderate) may be reached.