

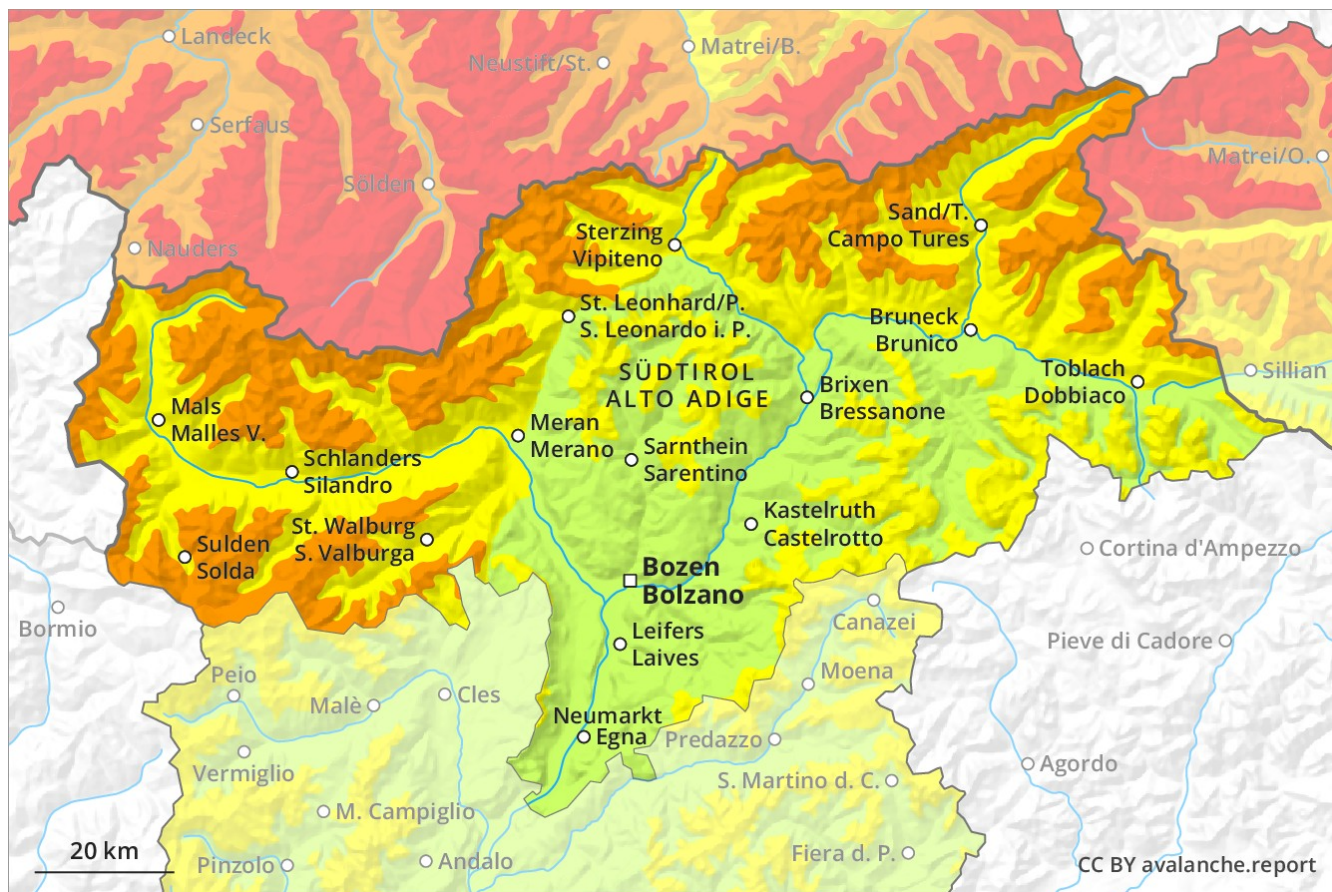
# Avalanche Forecast

## Monday 24 12 2018

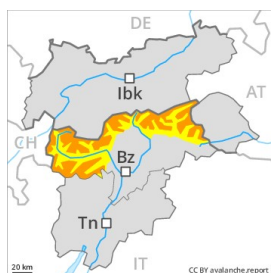
Published 23 12 2018, 17:00



Avalanche.report



## Danger Level 3 - Considerable



**Tendency: Constant avalanche danger** →  
on Tuesday 25 12 2018



Wind-drifted  
snow



Treeline



New snow



Treeline

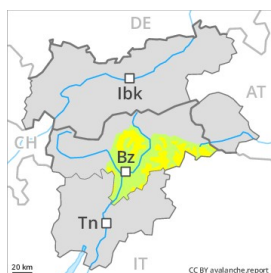
Increase in avalanche danger as a consequence of fresh snow and stormy weather.

The fresh wind slabs will be deposited on the unfavourable surface of an old snowpack in all aspects. They can sometimes be released, even by a single winter sport participant. Mostly small natural avalanches are possible especially on wind-loaded slopes. Faceted weak layers exist in the old snowpack in particular above approximately 2400 m. Weak layers in the old snowpack can be released in isolated cases by winter sport participants on steep, rather lightly snow-covered west, north and east facing slopes. Backcountry touring and other off-piste activities call for experience in the assessment of avalanche danger.

### Snowpack

Along the border with Tirol heavy snowfall above approximately 1500 m. The wind will be strong to storm force. Whumpfung sounds and the formation of shooting cracks when stepping on the snowpack are a clear indication of a weakly bonded snowpack.

## Danger Level 2 - Moderate



**Tendency: Constant avalanche danger** →  
on Tuesday 25 12 2018



Wind-drifted  
snow



Persistent  
weak layer



The sometimes storm force wind will transport the loosely bonded old snow.

The fresh wind slabs will be deposited on the unfavourable surface of an old snowpack. They can in very isolated cases be released, even by a single winter sport participant, but they will be small in most cases. Apart from the danger of being buried, restraint should be exercised as well in view of the danger of avalanches sweeping people along and giving rise to falls. Weak layers in the old snowpack can be released especially by large additional loads on steep, rather lightly snow-covered west, north and east facing slopes.

### Snowpack

The avalanche prone locations are quite prevalent and are barely recognisable because of the poor visibility. Faceted weak layers exist in the old snowpack in particular above approximately 2400 m. The wind will be strong to storm force adjacent to ridgelines.