

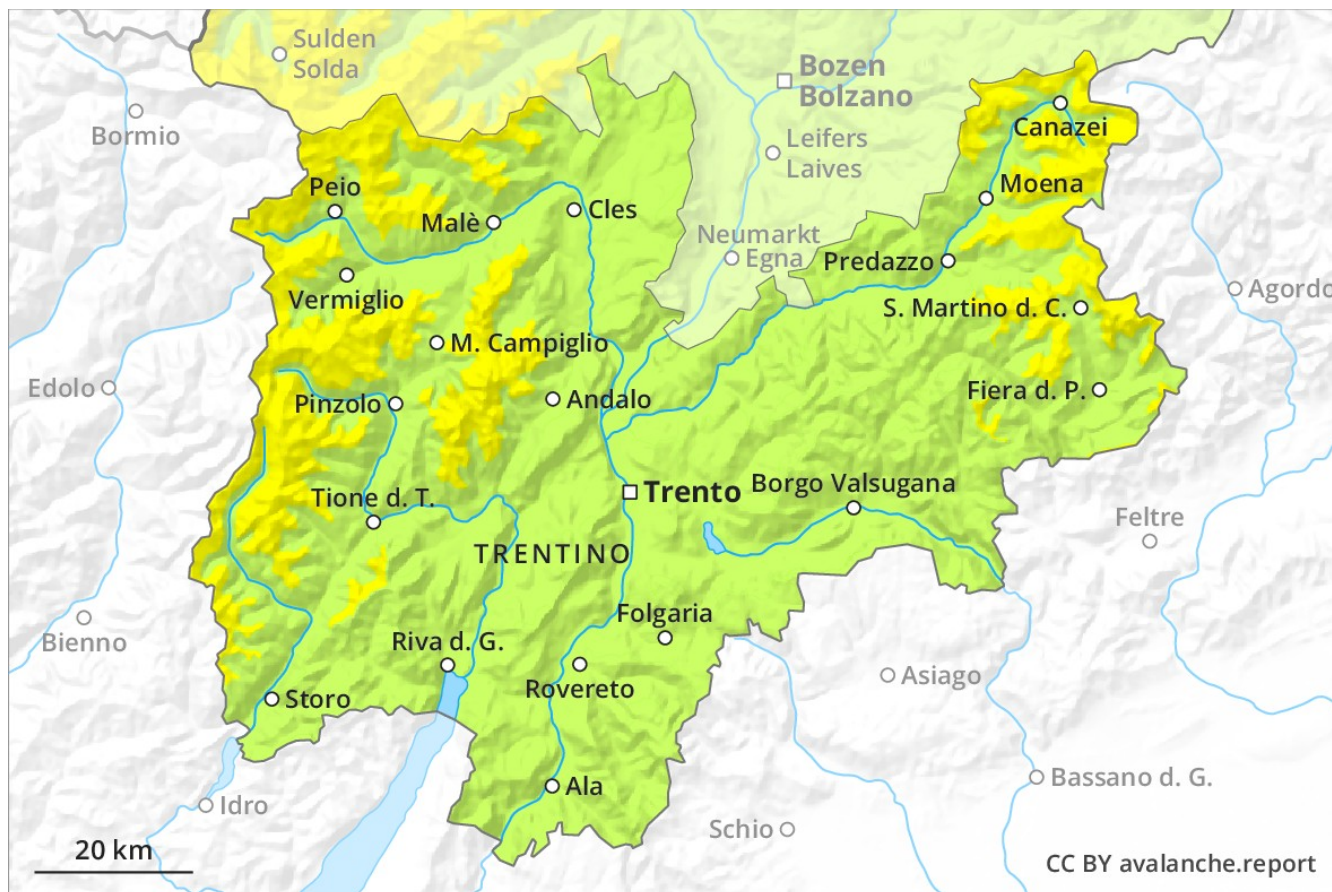
Avalanche Forecast

Saturday 29 12 2018

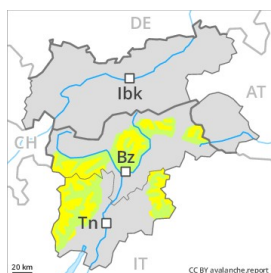
Published 28 12 2018, 20:14



Avalanche.report



Danger Level 2 - Moderate



Tendency: Increasing avalanche danger
on Sunday 30 12 2018



Wind-drifted
snow



Persistent
weak layer



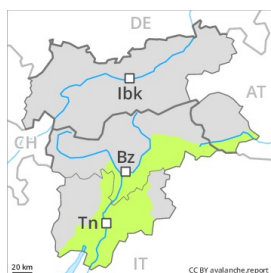
The fresh wind slabs represent the main danger.

As a consequence of wind from northwesterly directions, mostly small wind slabs will form in particular adjacent to ridgelines and in gullies and bowls. At high altitudes and in high Alpine regions avalanche prone locations are more prevalent and the danger is greater. These avalanche prone locations are clearly recognisable to the trained eye. Avalanches can in isolated cases be released in the old snowpack and reach dangerously large size. Apart from the danger of being buried, restraint should be exercised as well in view of the danger of avalanches sweeping people along and giving rise to falls. Maintaining distances between individuals is recommended.

Snowpack

The snowpack will be subject to considerable local variations. The somewhat older wind slabs have settled a little. In some places various wind slab layers are lying on old snow containing large grains. Isolated avalanche prone weak layers exist in the snowpack in particular on shady slopes. In steep terrain there is a danger of falling on the hard crust.

Danger Level 1 - Low



Tendency: Constant avalanche danger →
on Sunday 30 12 2018



Wind-drifted
snow



Hardly any snow is lying.

The somewhat older wind slabs represent the main danger. The wind slabs are to be found in particular adjacent to ridgelines and in gullies and bowls as well as in the high Alpine regions. The avalanche prone locations are rare and are easy to recognise. Restraint should be exercised because avalanches can sweep people along and give rise to falls.

Snowpack

Danger patterns

dp 6: cold, loose snow and wind

From a snow sport perspective, in most cases insufficient snow is lying.

Tendency

Low, level 1.