

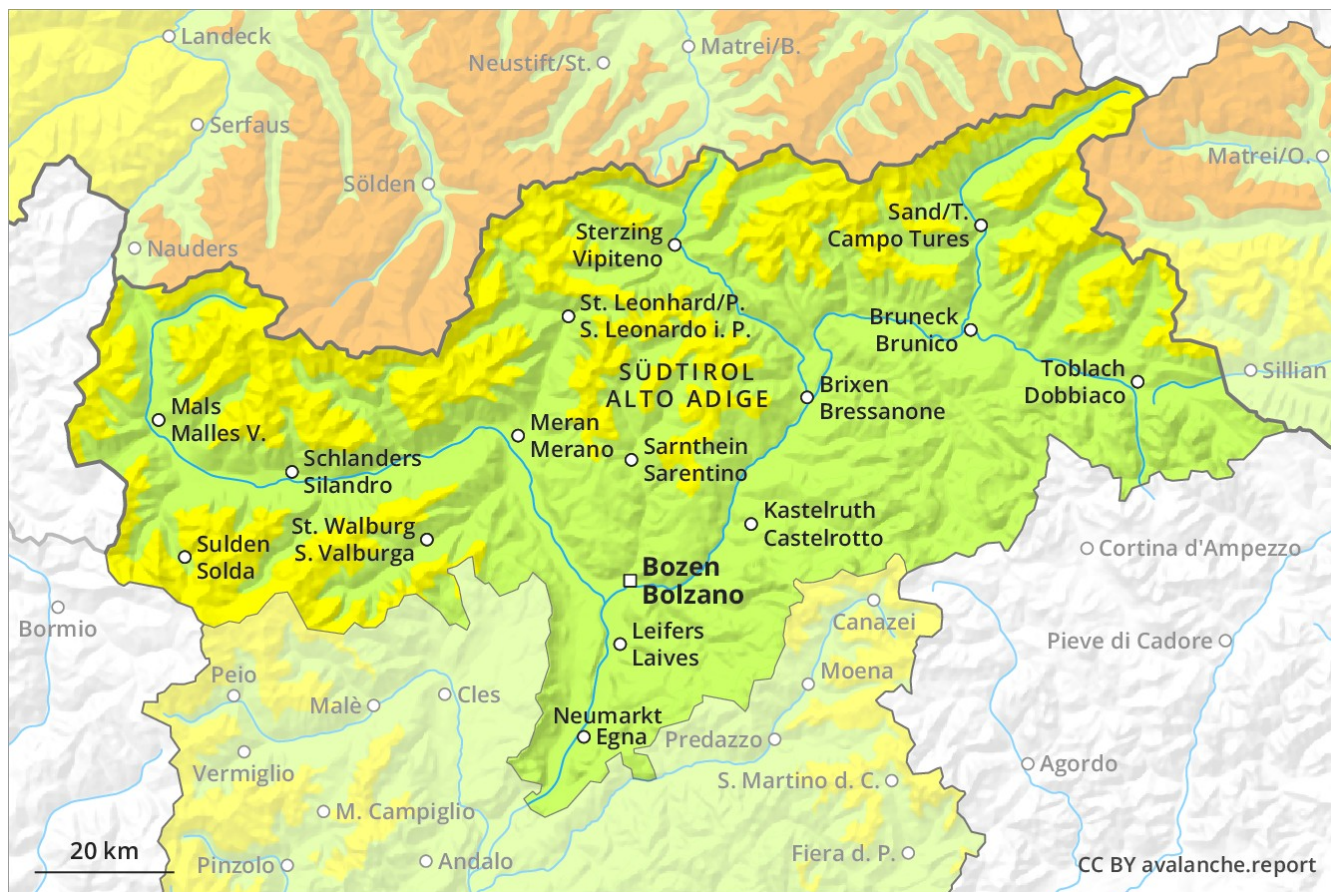
# Avalanche Forecast

## Sunday 30 12 2018

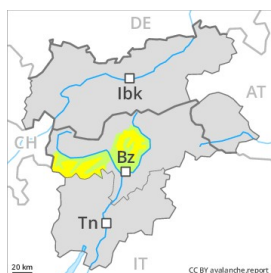
Published 29 12 2018, 17:00



Avalanche.report



## Danger Level 2 - Moderate



**Tendency: Increasing avalanche danger**  
on Monday 31 12 2018



Wind-drifted  
snow



Persistent  
weak layer



The fresh wind slabs represent the main danger.

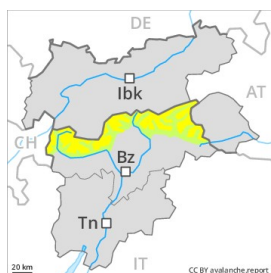
Hardly any increase in avalanche danger as a consequence of the snowfall. As a consequence of wind from northwesterly directions, mostly small wind slabs will form in particular adjacent to ridgelines and in gullies and bowls. At high altitudes and in high Alpine regions avalanche prone locations are more prevalent and the danger is greater. These avalanche prone locations are clearly recognisable to the trained eye.

Avalanches can in isolated cases be released in the old snowpack and reach dangerously large size. Apart from the danger of being buried, restraint should be exercised as well in view of the danger of avalanches sweeping people along and giving rise to falls. Maintaining distances between individuals is recommended.

### Snowpack

Some snow will fall in some localities. The snowpack will be subject to considerable local variations. The somewhat older wind slabs have settled a little. In some places various wind slab layers are lying on old snow containing large grains. Isolated avalanche prone weak layers exist in the snowpack in particular on shady slopes. In steep terrain there is a danger of falling on the hard crust.

## Danger Level 2 - Moderate



**Tendency: Increasing avalanche danger**  
 on Monday 31 12 2018



Wind-drifted  
 snow



Treeline



Persistent  
 weak layer



2700m  
 2200m

Fresh wind slabs require caution. Weak layers in the old snowpack necessitate caution.

As a consequence of fresh snow and a strong to storm force northwesterly wind, precarious wind slabs will form on Sunday in particular in gullies and bowls and behind abrupt changes in the terrain. The fresh wind slabs are mostly small but prone to triggering. In regions exposed to heavier precipitation and in high Alpine regions avalanche prone locations are more prevalent and the danger is greater. In addition the somewhat older wind slabs adjacent to ridgelines on north facing slopes are capable of being triggered in some cases still. Weakly bonded old snow: This applies above approximately 2200 m and below approximately 2700 m. Avalanches can in some places be released by a single winter sport participant and reach medium size. The avalanche prone locations are to be found on steep slopes of all aspects. Especially transitions from a shallow to a deep snowpack are unfavourable. Backcountry touring and other off-piste activities call for experience and a certain restraint.

### Snowpack

**Danger patterns**

dp 4: cold following warm / warm following cold

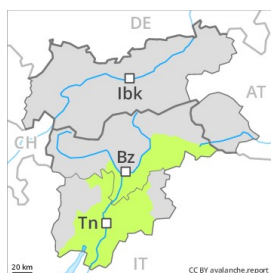
dp 6: cold, loose snow and wind

In particular from the Southern Stubai Alps via the Ahrntal to the Deferegger Alps in some localities up to 15 cm of snow will fall. The fresh wind slabs are lying on weak layers. The somewhat older wind slabs have settled a little. Avalanche prone weak layers exist in the centre of the snowpack, in particular between approximately 2200 and 2700 m. This applies in all aspects. The snowpack will be subject to considerable local variations.

### Tendency

As a consequence of fresh snow and strong wind there will be an increase in the avalanche danger.

## Danger Level 1 - Low



**Tendency: Increasing avalanche danger**  
on Monday 31 12 2018



Wind-drifted  
snow



2500m

### Hardly any snow is lying.

Hardly any increase in avalanche danger as a consequence of fresh snow and strong wind. The fresh and somewhat older wind slabs represent the main danger. The wind slabs are to be found in particular adjacent to ridgelines and in gullies and bowls as well as in the high Alpine regions. The avalanche prone locations are rather rare and are easy to recognise. Restraint should be exercised because avalanches can sweep people along and give rise to falls.

### Snowpack

**Danger patterns**

dp 6: cold, loose snow and wind

Some snow will fall in some localities. From a snow sport perspective, in most cases insufficient snow is lying.