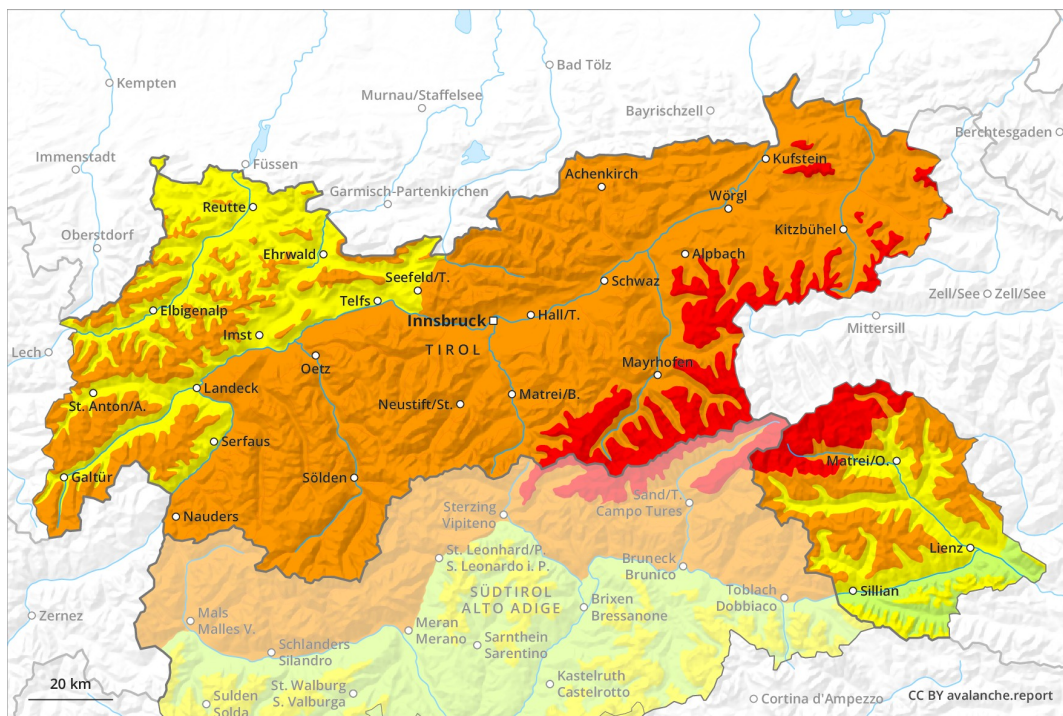
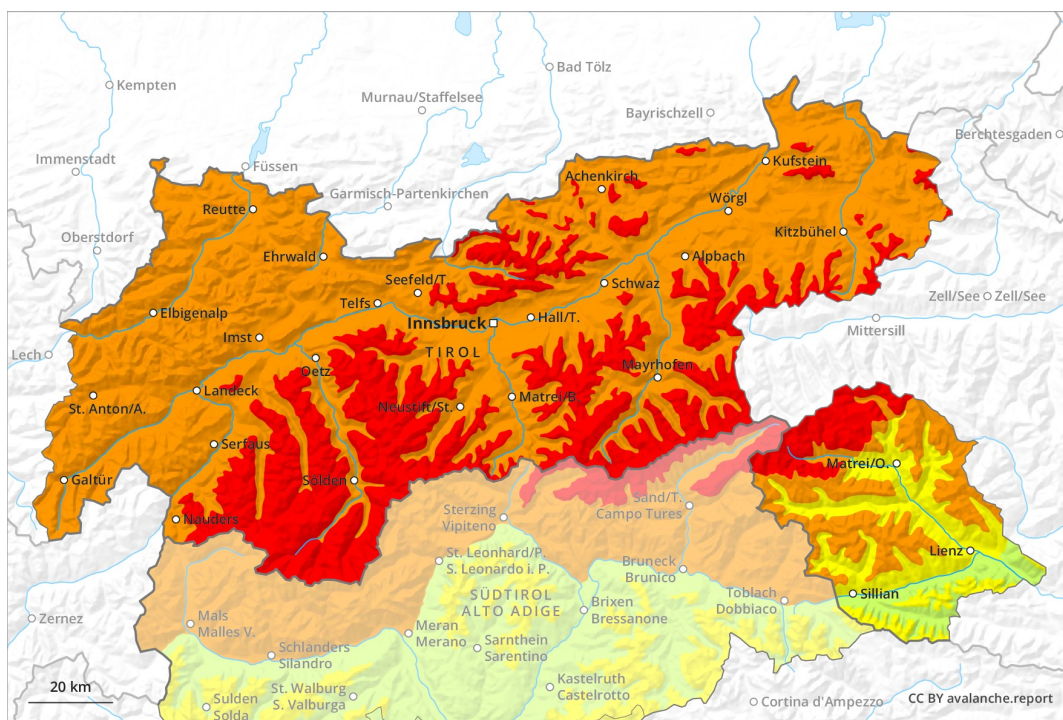




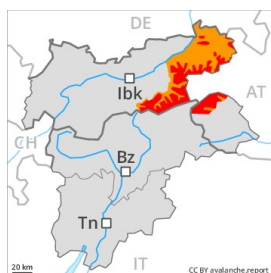
### AM



### PM



## Danger Level 4 - High



**Tendency: Constant avalanche danger** →  
on Sunday 06 01 2019



Wind-drifted  
snow



Treeline



New snow



As a consequence of fresh snow and wind a high avalanche danger will persist. Exposed transportation routes can be endangered occasionally.

As a consequence of fresh snow and wind the already large wind slabs will increase in size additionally. The fresh snow and wind slabs can be released easily or naturally in all aspects above the tree line. This also applies on steep slopes in areas close to the tree line. Numerous small and medium-sized natural avalanches are to be expected. Especially in the Zillertal Alps and in the High Tauern the dry avalanches can penetrate even deep layers and reach large size. Exposed transportation routes can be endangered. The peak of avalanche activity will be reached in the afternoon probably. The conditions are very dangerous for snow sport activities outside marked and open pistes.

## Snowpack

### Danger patterns

dp 6: cold, loose snow and wind

dp 9: graupel blanketed with snow

Saturday: Over a wide area 40 to 70 cm of snow, and even more in some localities, will fall. The wind will be strong to storm force. The snowpack will be generally prone to triggering. Over a wide area fresh snow and wind slabs are lying on soft layers. The extensive wind slabs can be released easily or naturally in all aspects above the tree line. This also applies in areas close to the tree line. Faceted weak layers exist deep in the old snowpack in particular in the Northern Zillertal Alps and in the High Tauern.

## Tendency

Stormy weather and fresh snow: High avalanche danger will persist.

## Danger Level 4 - High

AM:



Treeline

**Tendency: Constant avalanche danger** →

on Sunday 06 01 2019



Wind-drifted  
snow



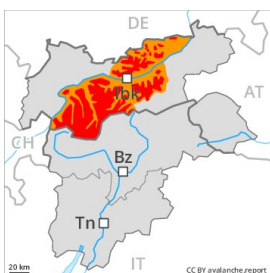
Treeline



New snow



PM:



Treeline

**Tendency: Constant avalanche danger** →

on Sunday 06 01 2019



Wind-drifted  
snow



Treeline



New snow



Fresh wind slabs represent the main danger. Increase in avalanche danger in the afternoon.

As a consequence of fresh snow and wind the wind slabs will increase in size once again. In the afternoon as the snowfall becomes more intense there will be an increase in the avalanche danger to level 4 (high). The fresh snow and wind slabs can be released easily or naturally in all aspects above the tree line. In addition small and medium-sized natural avalanches are to be expected. Dry avalanches can in isolated cases release deeper layers of the snowpack and reach large size. The conditions are dangerous for winter sport activities outside marked and open pistes. Below the tree line the situation is a little more favourable. The danger exists primarily in alpine snow sports terrain. Avalanches capable of reaching valley bottoms and endangering exposed transportation routes are unlikely to occur.

### Snowpack

**Danger patterns**

dp 6: cold, loose snow and wind

dp 9: graupel blanketed with snow

Saturday: 30 to 50 cm of snow. will fall. The wind will be strong to storm force. The snowpack will be generally prone to triggering. Over a wide area fresh snow and wind slabs are lying on soft layers. The extensive wind slabs can be released easily. or in isolated cases naturally, in all aspects above the tree line. Isolated avalanche prone weak layers exist deeper in the snowpack in particular on very steep west, north and east facing slopes. This applies especially in the Tuxer Alps, in the Northern Oetz and Stubai Alps and along the border with South Tyrol. Weak layers in the old snowpack can be released in isolated cases and mostly by large additional loads.

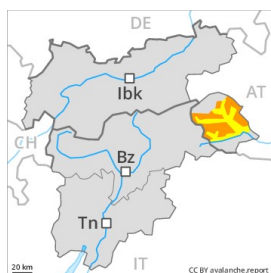
### Tendency



The snow sport conditions outside marked and open pistes remain very dangerous.



## Danger Level 3 - Considerable



**Tendency: Constant avalanche danger** →  
 on Sunday 06 01 2019



Wind-drifted  
 snow



^  
 Treeline



Persistent  
 weak layer



^  
 2200m

### Wind slabs and weakly bonded old snow require caution.

**Fresh wind slabs:** As a consequence of fresh snow and a strong northwesterly wind, extensive wind slabs will form in particular in gullies and bowls and behind abrupt changes in the terrain. These can be released even by a single winter sport participant in all aspects, especially above the tree line as well as in areas close to the tree line. At elevated altitudes and in the regions neighbouring those that are subject to danger level 4 (high) avalanche prone locations are more prevalent and the danger is greater. Avalanches can reach medium size. **Weakly bonded old snow:** Weakly bonded old snow above approximately 2200 m. Avalanches can in some places be released, mostly by large loads. The avalanche prone locations are to be found in particular on steep west to north to east facing slopes. Especially transitions from a shallow to a deep snowpack are unfavourable. Backcountry touring and other off-piste activities call for extensive experience in the assessment of avalanche danger and great restraint.

### Snowpack

**Danger patterns**

dp 6: cold, loose snow and wind

dp 4: cold following warm / warm following cold

Saturday: 10 to 30 cm of snow. will fall. The wind will be strong to storm force. The avalanche-prone wind slabs of the last few days are lying on soft layers. Even single winter sport participants can release avalanches easily. Faceted weak layers exist in the centre of the snowpack, in particular above approximately 2200 m.

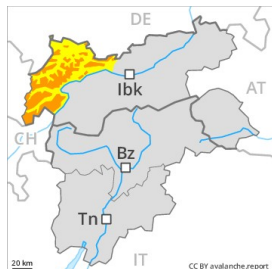
### Tendency

Considerable avalanche danger will persist.



## Danger Level 3 - Considerable

AM:



Tendency: **Constant avalanche danger** →  
 on Sunday 06 01 2019



Wind-drifted snow



Treeline



Persistent weak layer



2200m

PM:



Tendency: **Constant avalanche danger** →  
 on Sunday 06 01 2019



Wind-drifted snow



Treeline



Persistent weak layer



Fresh wind slabs are prone to triggering in all aspects above the tree line. Avalanches can in some places be released in the old snowpack also.

As a consequence of fresh snow and a strong to storm force northerly wind, avalanche prone wind slabs will form. Even single winter sport participants can release avalanches in many places, including dangerously large ones. The avalanche prone locations are to be found on wind-loaded slopes, and adjacent to ridgelines and in gullies and bowls in all aspects. At elevated altitudes avalanche prone locations are more prevalent and the danger is greater. As the snowfall becomes more intense the prevalence and size of the avalanche prone locations will increase in the afternoon. Weakly bonded old snow: Individual avalanche prone locations are to be found on very steep slopes above approximately 2200 m. On very steep west, north and east facing slopes the avalanche prone locations are more prevalent. Weak layers in the old snowpack can be released especially in areas where the snow cover is rather shallow, this applies in particular in case of a large load. Backcountry touring and other off-piste activities call for extensive experience in the assessment of avalanche danger and restraint. Below the tree line the situation is a little more favourable.

### Snowpack

Danger patterns

dp 6: cold, loose snow and wind

dp 4: cold following warm / warm following cold

Saturday: 10 to 30 cm of snow, and even more in some localities, will fall. The wind will be strong to storm force. The fresh snow and wind slabs will be deposited on soft layers. Extensive wind slabs will form. They are prone to triggering in all aspects. Individual weak layers exist in the old snowpack. This applies especially on very steep east, north and west facing slopes above approximately 2200 m.

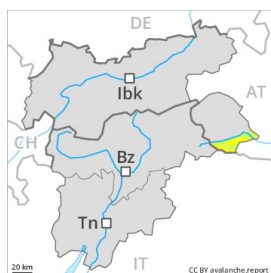
### Tendency



Considerable danger of dry avalanches will persist.



## Danger Level 2 - Moderate



**Tendency: Constant avalanche danger** →  
on Sunday 06 01 2019



Wind-drifted  
snow



Treeline

### Hardly any snow is lying.

The fresh wind slabs represent the main danger. These are to be found in particular adjacent to ridgelines and in gullies and bowls as well as in the high Alpine regions. The avalanche prone locations are rare and are easy to recognise. At high altitude avalanche prone locations are more prevalent. Restraint should be exercised because avalanches can sweep people along and give rise to falls.

### Snowpack

**Danger patterns**

dp 6: cold, loose snow and wind

From a snow sport perspective, in most cases insufficient snow is lying.

### Tendency

Fresh wind slabs represent the main danger.