

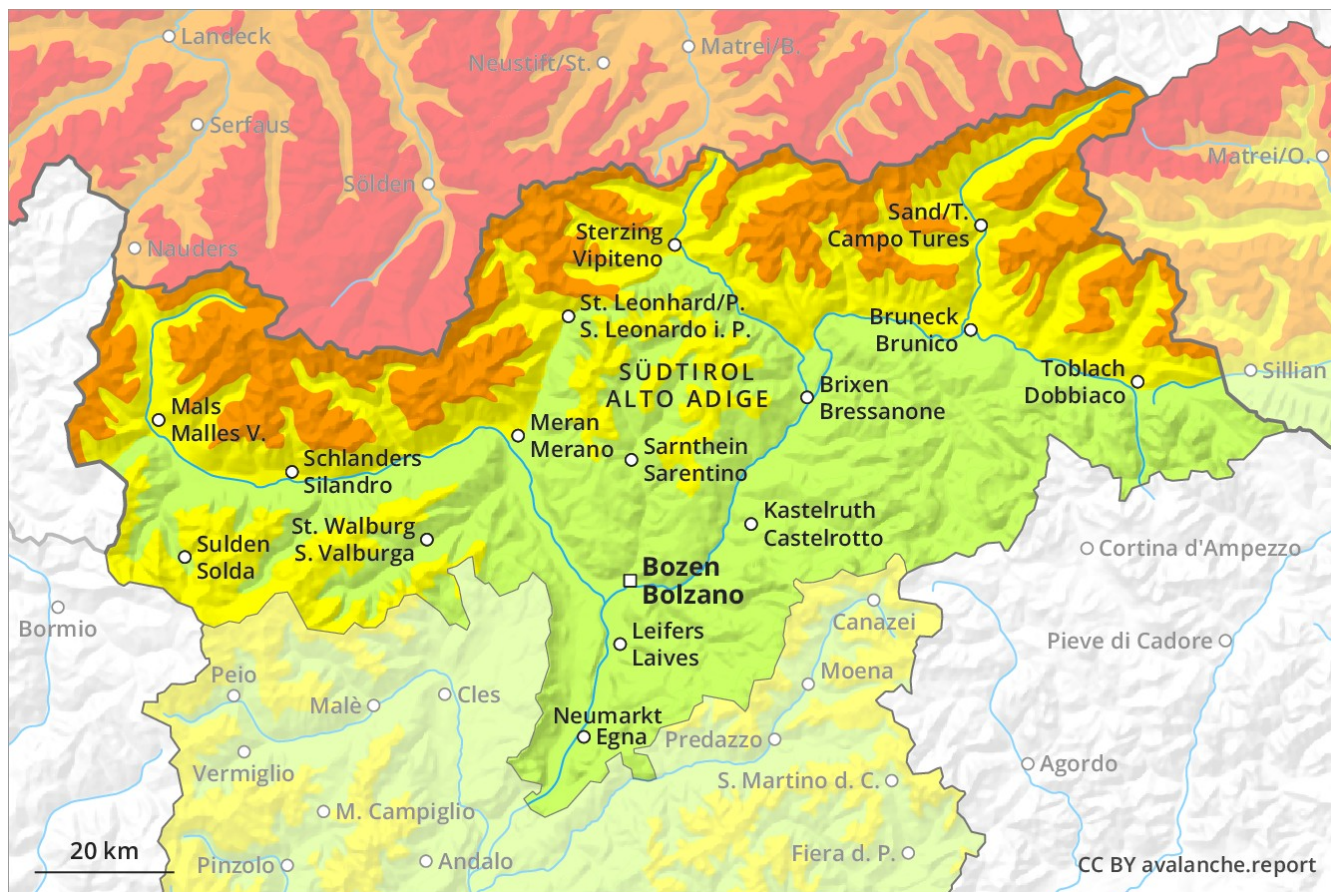
Avalanche Forecast

Tuesday 08 01 2019

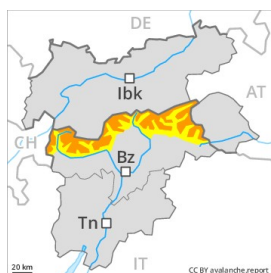
Published 07 01 2019, 18:33



Avalanche.report



Danger Level 3 - Considerable



Tendency: Increasing avalanche danger
on Wednesday 09 01 2019



Wind-drifted
snow



Treeline

Extensive experience in the assessment of avalanche danger is required.

As a consequence of fresh snow and strong wind the wind slabs will increase in size once again as the day progresses. These can in many cases be released by small loads. Especially on wind-loaded slopes medium-sized natural avalanches must be expected in isolated cases. The avalanche prone locations are to be found on steep slopes above the tree line. Especially in the north and in the northeast avalanche prone locations are more prevalent and the danger is greater. They are barely recognisable because of the poor visibility. Additionally avalanches can be released in the old snowpack and reach large size in isolated cases. The conditions are sometimes critical for backcountry touring and other off-piste activities.

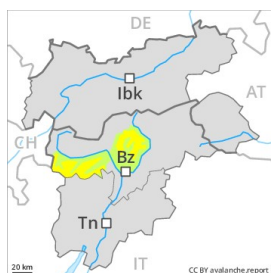
Snowpack

Especially along the border with Tirol up to 15 cm of snow, and even more in some localities, will fall. The sometimes strong wind will transport the fresh snow. Over a wide area fresh snow and wind slabs are lying on soft layers. Isolated avalanche prone weak layers exist in the old snowpack. The snowpack will be generally prone to triggering.

Tendency

Increase in avalanche danger as a consequence of fresh snow and strong wind.

Danger Level 2 - Moderate



Tendency: Constant avalanche danger →
on Wednesday 09 01 2019



Wind-drifted
snow



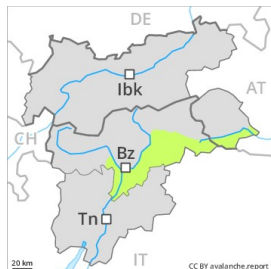
Wind slabs require caution.

In all aspects the wind slabs have increased in size moderately in the last few days. These can in some places be released by small loads. The avalanche prone locations are to be found in gullies and bowls above approximately 2200 m, and adjacent to ridgelines in all aspects. Mostly the avalanches are only small but in many cases easily released.

Snowpack

In some cases the wind slabs have bonded poorly with the old snowpack. The near-surface layers of the snowpack necessitate caution. The snowpack will be subject to considerable local variations. In steep terrain there is a danger of falling on the hard snow surface.

Danger Level 1 - Low



Tendency: Constant avalanche danger →
on Wednesday 09 01 2019



Wind-drifted
snow



Only a little snow is lying.

The fresh and older wind slabs represent the main danger. They are to be found especially adjacent to ridgelines and in gullies and bowls and generally at high altitudes. These avalanche prone locations are rather rare and are easy to recognise. Apart from the danger of being buried, restraint should be exercised as well in view of the danger of avalanches sweeping people along and giving rise to falls.

Snowpack

The snowpack will be subject to considerable local variations above approximately 2300 m. Below approximately 2300 m from a snow sport perspective, in most cases insufficient snow is lying. There is a danger of falling on the icy crust.