

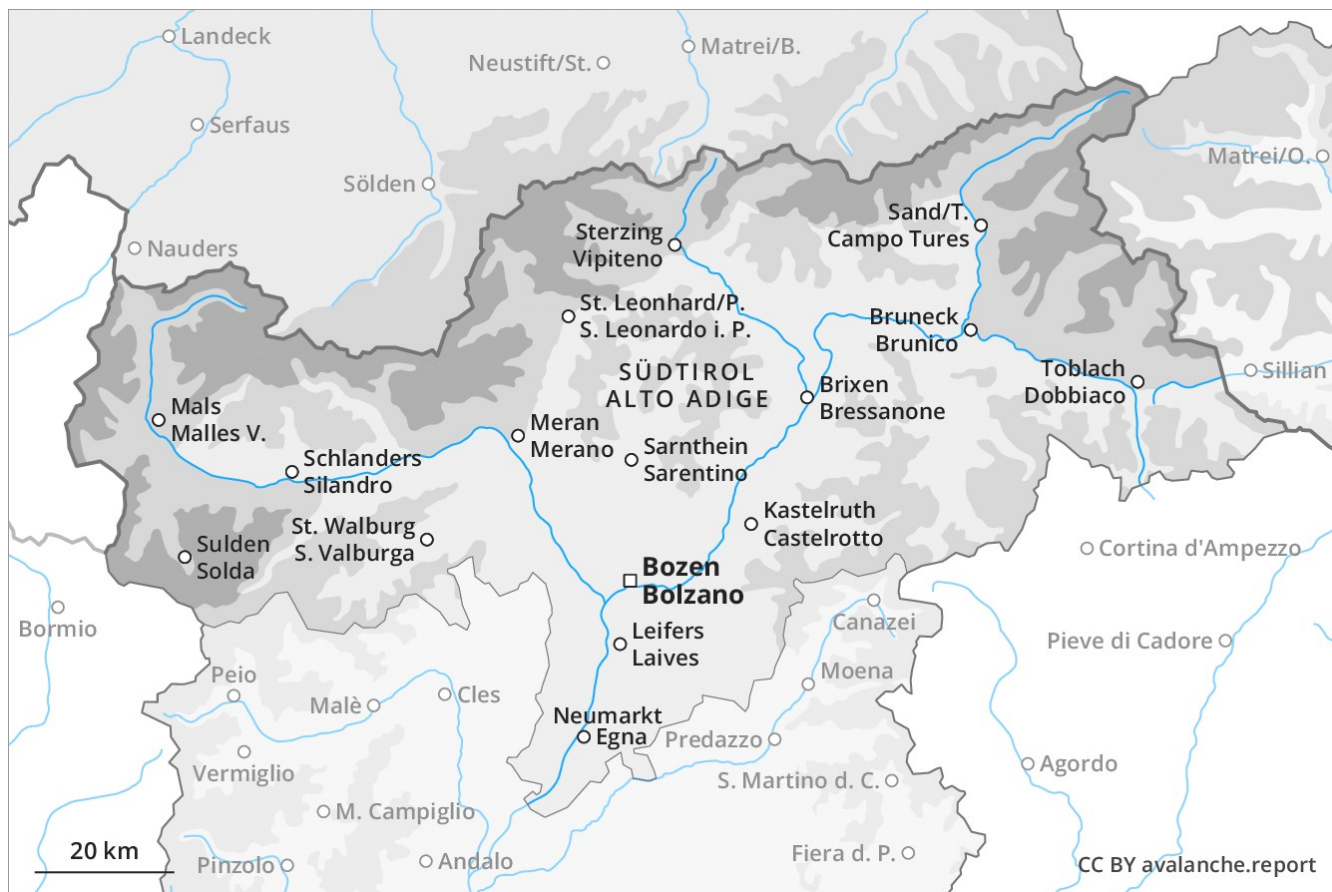
Avalanche Forecast

Saturday 19 01 2019

Published 18 01 2019, 17:00

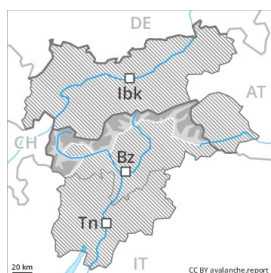


Avalanche.report





Danger Level 3 - Considerable



Tendency: Constant avalanche danger →
 on Sunday 20 01 2019



Wind-drifted
 snow



Treeline



Persistent
 weak layer



Treeline

Restraint is recommended.

The extensive wind slabs of last week are lying on weak layers. The sometimes fresh snow-covered wind slabs of recent weeks can be released by a single winter sport participant in some cases in particular on northwest, north and southeast facing slopes. Avalanches can additionally be released in deeper layers especially at transitions from a shallow to a deep snowpack, when entering gullies and bowls for example. Whumpfung sounds and the formation of shooting cracks when stepping on the snowpack serve as an alarm sign. On steep grassy slopes individual small and medium-sized gliding avalanches are possible below approximately 2400 m.

Snowpack

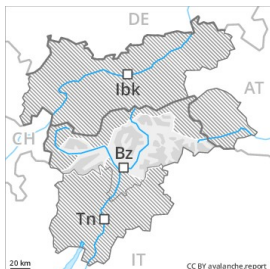
The mostly small wind slabs of Thursday are clearly recognisable to the trained eye. In some cases the various wind slabs have bonded still only poorly with each other and the old snowpack. Avalanche prone weak layers exist in the bottom section of the old snowpack. In some cases avalanches can penetrate even deep layers and reach large size in isolated cases. Weak layers deep in the old snowpack necessitate defensive route selection.

Tendency

The weather will be cold. Hardly any decrease in danger of gliding avalanches.



Danger Level 2 - Moderate



Tendency: Constant avalanche danger →
on Sunday 20 01 2019



Wind-drifted
snow



Fresh wind slabs require caution.

In particular adjacent to ridgelines and in gullies and bowls as well as in high Alpine regions mostly small wind slabs formed. These can be released by small loads. The prevalence of avalanche prone locations and likelihood of triggering will increase at high altitude and in the high Alpine regions.

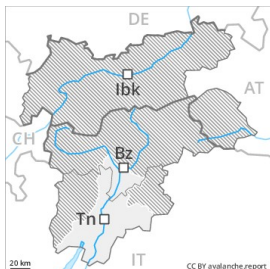
Snowpack

In some cases the wind slabs have bonded poorly with the old snowpack. These avalanche prone locations are but are easy to recognise. The snowpack will be subject to considerable local variations.

Tendency

Moderate, level 2.

Danger Level 1 - Low



Tendency: Constant avalanche danger →
on Sunday 20 01 2019



Wind-drifted
snow



2200m

Only a little snow is lying on north and northeast facing slopes.

The mostly small wind slabs have bonded quite well with the old snowpack especially on sunny slopes. These are to be found especially adjacent to ridgelines and in gullies and bowls and generally at high altitudes. Mostly the avalanches in these locations are small and can be released by large loads. The avalanche prone locations are rather rare and are easy to recognise. Apart from the danger of being buried, restraint should be exercised in particular in view of the danger of avalanches sweeping people along and giving rise to falls.

Snowpack

In all regions from a snow sport perspective, in most cases insufficient snow is lying. The snowpack remains generally well bonded.

Tendency

Low, level 1.