

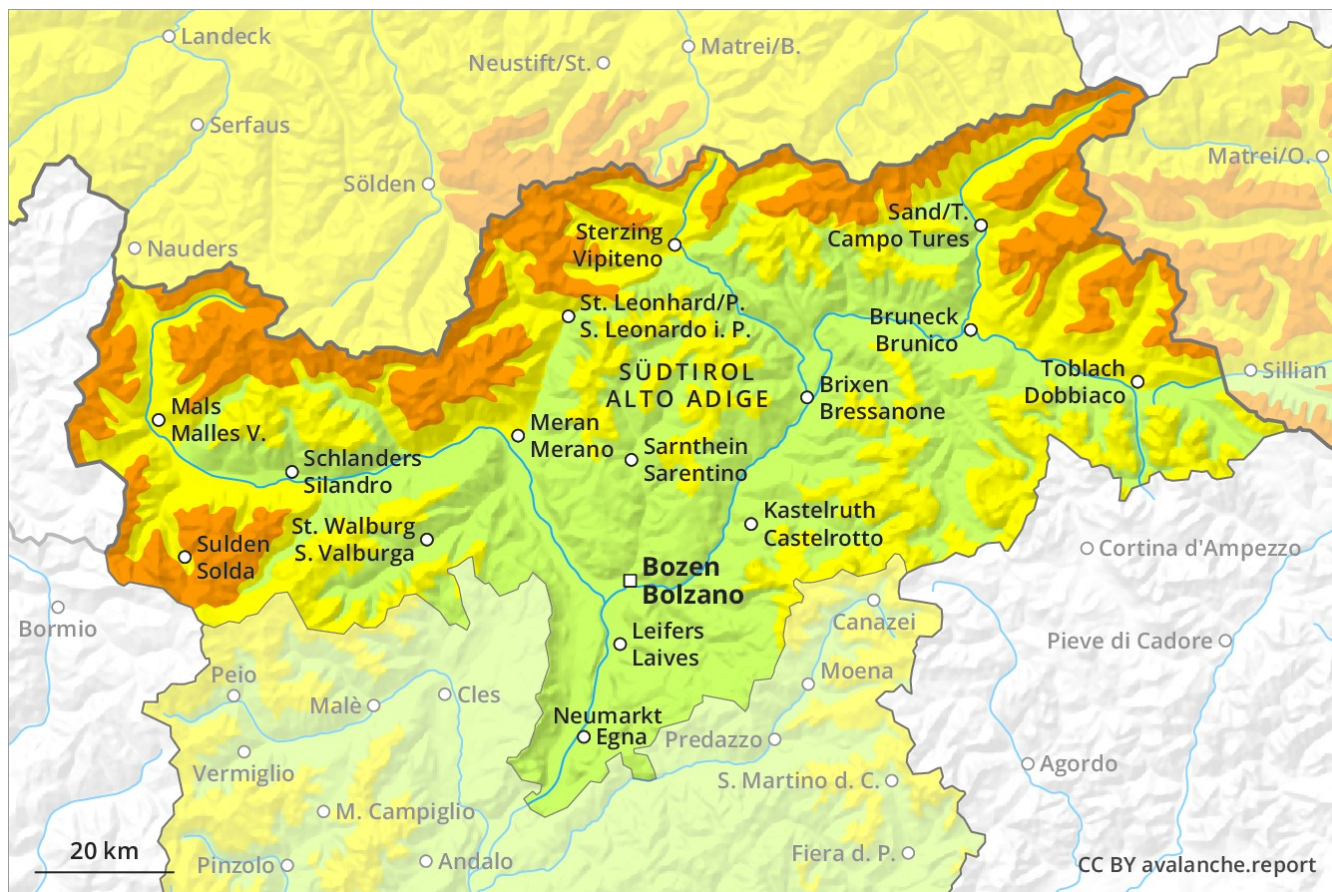
Avalanche Forecast

Sunday 20 01 2019

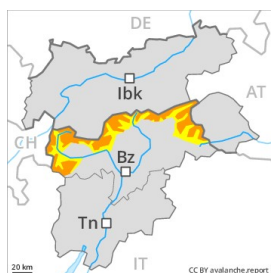
Published 19 01 2019, 17:00



Avalanche.report



Danger Level 3 - Considerable



Tendency: Decreasing avalanche danger
on Monday 21 01 2019



Wind-drifted
snow



Treeline



Persistent
weak layer



Treeline

Backcountry touring and other off-piste activities call for experience in the assessment of avalanche danger and careful route selection.

The somewhat older wind slabs are to be evaluated with care and prudence in particular in very steep terrain. Avalanches can be released in deeper layers especially at transitions from a shallow to a deep snowpack, when entering gullies and bowls for example. Whumpfung sounds and the formation of shooting cracks when stepping on the snowpack serve as an alarm sign. On steep grassy slopes individual small and medium-sized gliding avalanches are possible below approximately 2400 m.

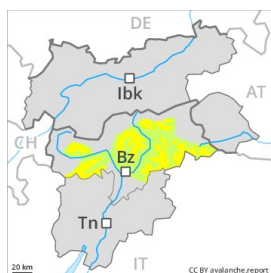
Snowpack

In some cases the various wind slabs have bonded still only poorly with each other and the old snowpack. Avalanche prone weak layers exist in the bottom section of the old snowpack. In some cases avalanches can penetrate even deep layers and reach large size in isolated cases. In little used backcountry terrain the avalanche prone locations are more prevalent. Caution is to be exercised in areas with glide cracks.

Tendency

Gradual decrease in avalanche danger.

Danger Level 2 - Moderate



Tendency: Constant avalanche danger →
 on Monday 21 01 2019



Wind-drifted
 snow



Persistent
 weak layer



Fresh wind slabs require caution.

In particular adjacent to ridgelines and in gullies and bowls as well as in high Alpine regions mostly small wind slabs formed. These can be released by small loads. The prevalence of avalanche prone locations and likelihood of triggering will increase at high altitude and in the high Alpine regions. Avalanche prone weak layers exist in the bottom section of the snowpack in all aspects.

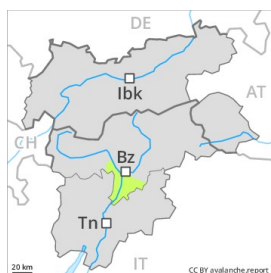
Snowpack

In some cases the wind slabs have bonded poorly with the old snowpack. These avalanche prone locations are but are easy to recognise. The snowpack will be subject to considerable local variations.

Tendency

Moderate, level 2.

Danger Level 1 - Low



Tendency: Constant avalanche danger →
on Monday 21 01 2019



Wind-drifted
snow



Only a little snow is lying.

The mostly small wind slabs have bonded quite well with the old snowpack especially on sunny slopes. These are to be found especially adjacent to ridgelines and in gullies and bowls and generally at high altitudes. Mostly the avalanches in these locations are small and can be released by large loads. The avalanche prone locations are rather rare and are easy to recognise. Apart from the danger of being buried, restraint should be exercised in particular in view of the danger of avalanches sweeping people along and giving rise to falls.

Snowpack

In all regions from a snow sport perspective, in most cases insufficient snow is lying.

Tendency

Low, level 1.