

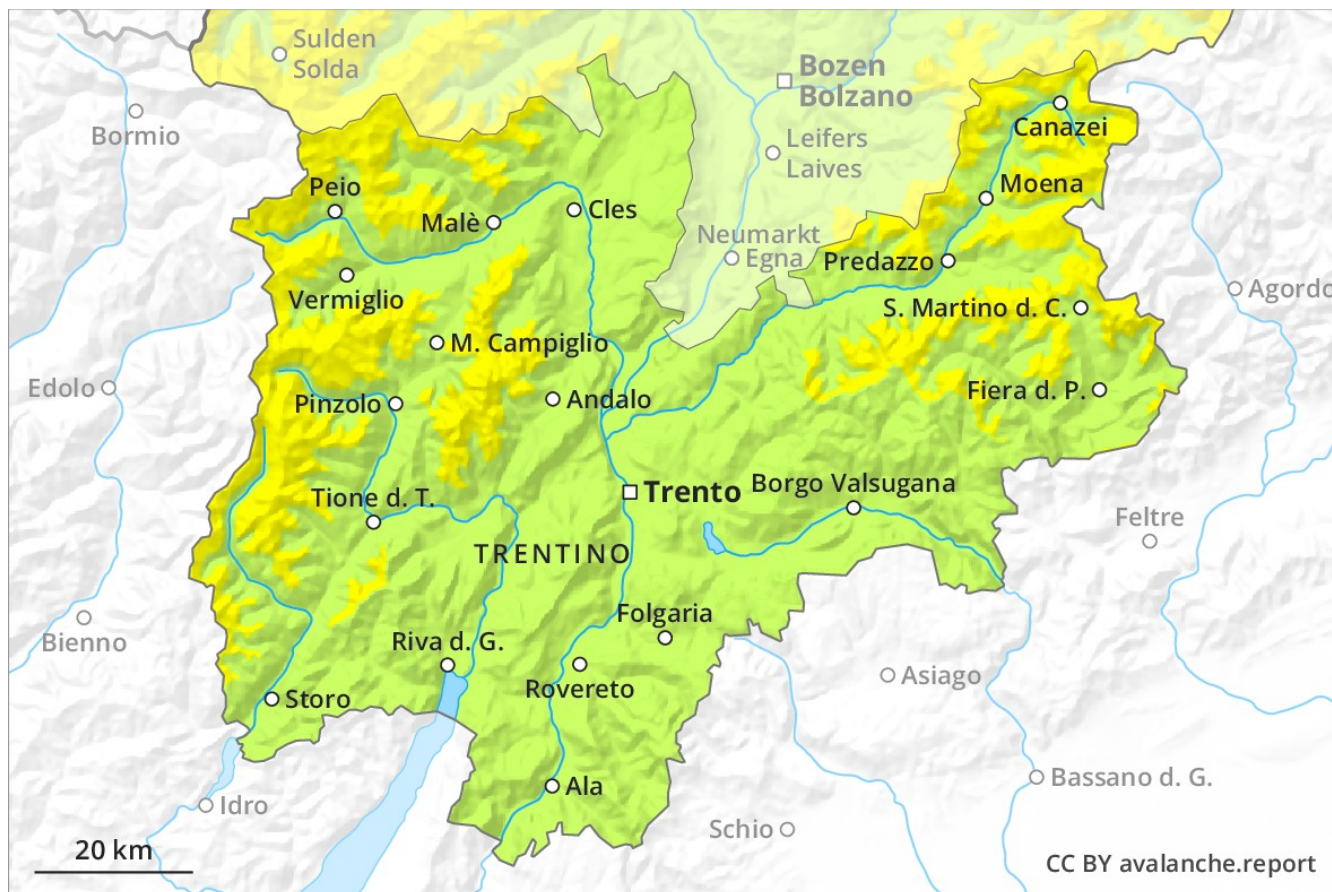
Avalanche Forecast

Tuesday 29 01 2019

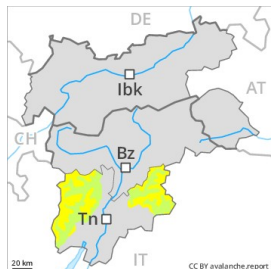
Published 28 01 2019, 17:00



Avalanche.report



Danger Level 2 - Moderate



Tendency: Constant avalanche danger →
on Wednesday 30 01 2019



Wind-drifted
snow



Treeline



Persistent
weak layer



Treeline

The fresh wind slabs represent the main danger. They must be evaluated with care and prudence in particular on steep north facing slopes above approximately 2000 m.

Wind slabs represent the main danger. They are to be found especially above the tree line. The avalanche prone locations are to be found in particular in gullies and bowls, and behind abrupt changes in the terrain. The wind slabs are clearly recognisable to the trained eye. Avalanches can also be released in the old snowpack and reach medium size in particular on steep shady slopes. In particular transitions from a shallow to a deep snowpack are critical.

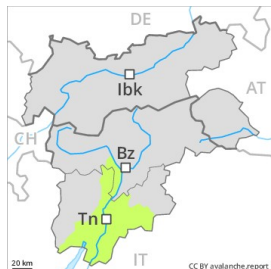
Snowpack

A little snow is lying below approximately 2000 m. Up to 20 cm of snow. fell in all altitude zones. The wind was moderate at times in some localities. Wind slabs have formed in all aspects.

Tendency

The avalanche danger will persist.

Danger Level 1 - Low



Tendency: Constant avalanche danger →
on Wednesday 30 01 2019



Wind-drifted
snow



In all altitude zones from a snow sport perspective, in most cases insufficient snow is lying.

The fresh wind slabs represent the main danger. These are to be found especially adjacent to ridgelines and in gullies and bowls and generally at high altitudes. Mostly avalanches are small but can be released in some cases by a single winter sport participant. The avalanche prone locations are easy to recognise. Weak layers in the old snowpack can be released in some places in particular in gullies and bowls. Apart from the danger of being buried, restraint should be exercised in particular in view of the danger of avalanches sweeping people along and giving rise to falls.

Snowpack

From a snow sport perspective, in most cases insufficient snow is lying. 5 to 15 cm of snow. fell in all altitude zones. Above approximately 2000 m a little snow is lying. The mostly small wind slabs remain prone to triggering in particular on very steep shady slopes above approximately 2200 m.

Tendency

The avalanche danger will persist.