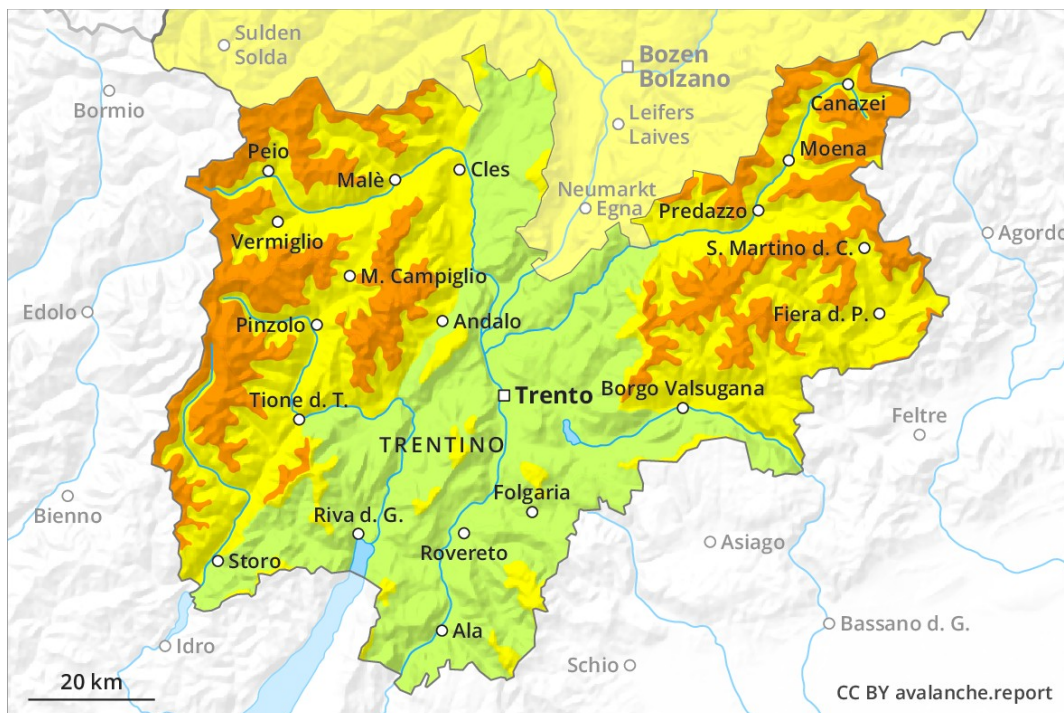
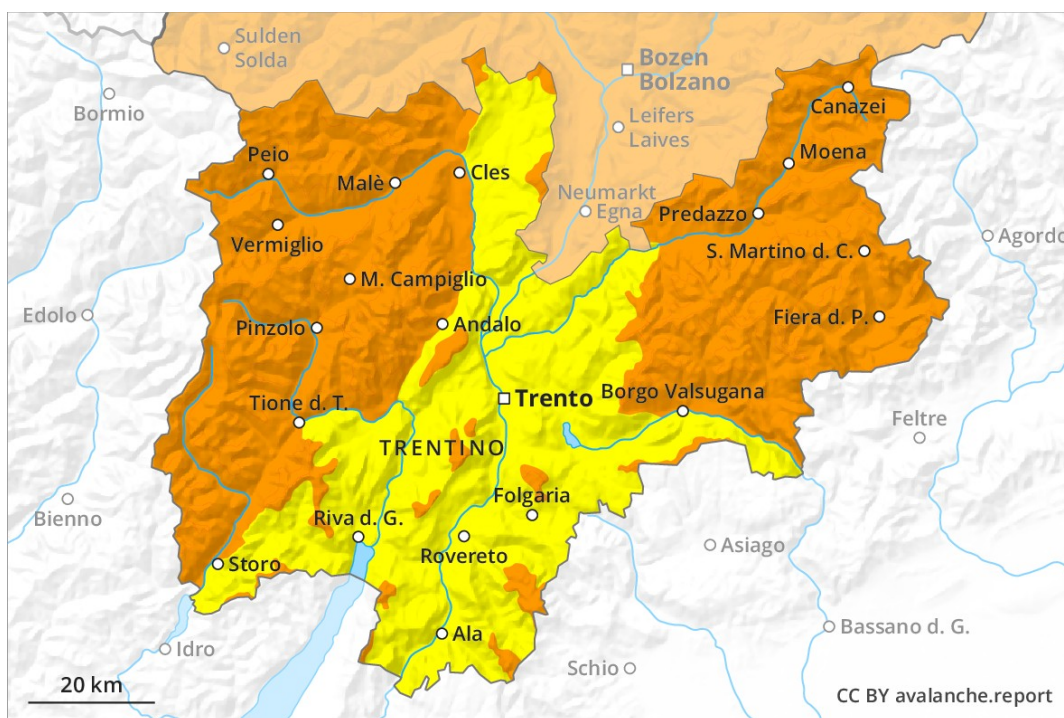


AM

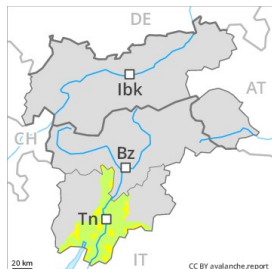


PM



Danger Level 3 - Considerable

AM:



Tendency: Increasing avalanche danger
 on Saturday 02 02 2019



Wind-drifted
 snow



Treeline

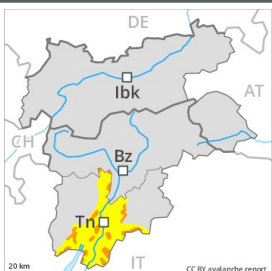


New snow

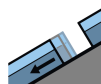


Treeline

PM:



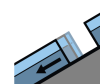
Tendency: Increasing avalanche danger
 on Saturday 02 02 2019



Gliding snow



Treeline



Gliding snow



Treeline

Fresh snow and wind slabs require caution.

As a consequence of fresh snow and wind a considerable avalanche danger will be encountered over a wide area. The wind slabs represent the main danger. The avalanche prone locations are to be found in particular adjacent to ridgelines and in gullies and bowls above approximately 1800 m. Single backcountry tourers can release avalanches easily, including medium-sized ones.

Snowpack

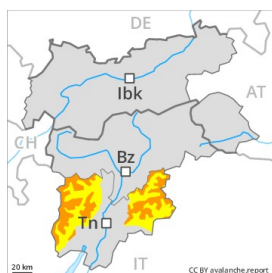
The wind will be strong at times in some localities. The wind slabs will form in all aspects. Much of the fresh and wind-drifted snow represent the main danger. It will be deposited on the unfavourable surface of an old snowpack above the tree line.

Tendency

Increase in avalanche danger as a consequence of fresh snow and strong wind.

Danger Level 3 - Considerable

AM:



Tendency: Increasing avalanche danger
 on Saturday 02 02 2019



Wind-drifted
 snow



Treeline



New snow



Treeline

PM:



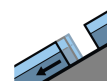
Tendency: Increasing avalanche danger
 on Saturday 02 02 2019



Wind-drifted
 snow



Treeline



Gliding snow



Treeline

Fresh snow and wind slabs require caution.

As a consequence of fresh snow and wind a considerable avalanche danger will be encountered over a wide area. The fresh snow and wind slabs represent the main danger. These are to be found especially above the tree line. Avalanche prone locations are to be found in particular in gullies and bowls, and behind abrupt changes in the terrain. Even single backcountry tourers can release avalanches easily, including medium-sized ones. The fresh wind slabs are to be avoided in particular in very steep terrain.

Snowpack

The wind will be strong at times in some localities. Much of the fresh and wind-drifted snow represent the main danger. It will be deposited on the unfavourable surface of an old snowpack in all aspects. Wind slabs will form in all aspects.

Tendency

Further increase in avalanche danger as a consequence of fresh snow and strong wind.