

# Avalanche Forecast

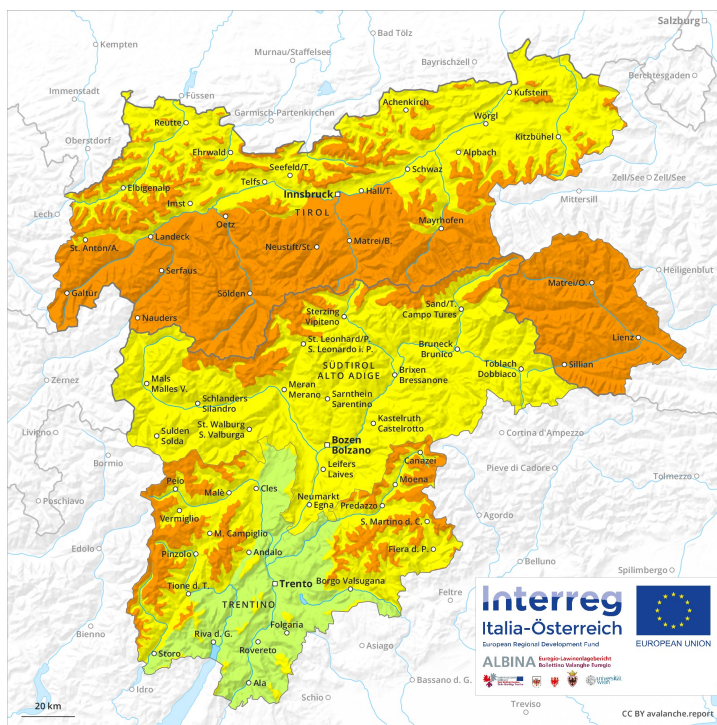
## Friday 01 02 2019

Published 01 02 2019, 10:09

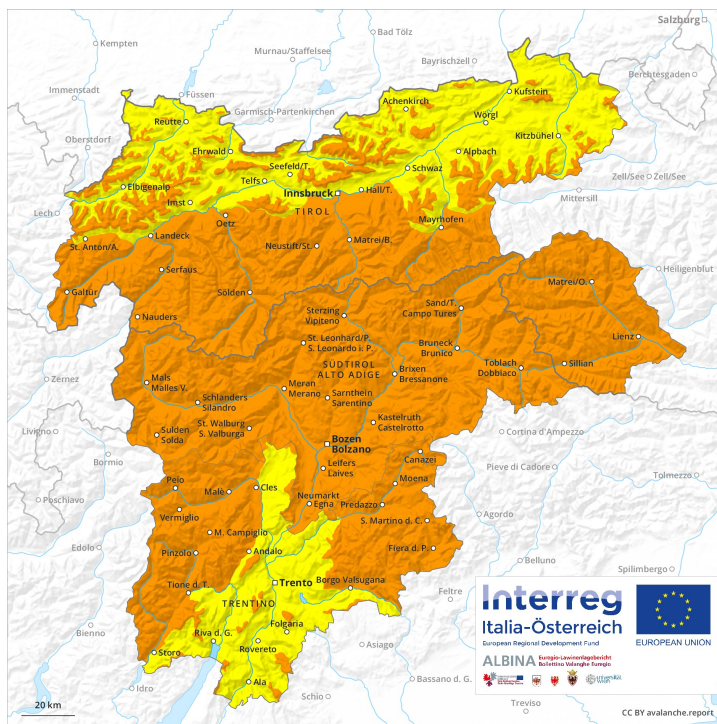


Avalanche.report

AM



PM



## Danger Level 3 - Considerable



Treeline

**Tendency: Increasing avalanche danger**  
on Saturday 02 02 2019



Wind-drifted  
snow



Treeline



Gliding snow



2400m

As a consequence of fresh snow and a sometimes strong wind, further wind slabs will form especially above the tree line. Caution is to be exercised in areas with glide cracks.

Fresh wind slabs represent the main danger. The fresh wind slabs are in some cases thick and can be released easily. The avalanche prone locations are to be found in particular on wind-loaded slopes of all aspects and in gullies and bowls, and behind abrupt changes in the terrain. These places are clearly recognisable to the trained eye. In addition there is a danger of gliding avalanches. This applies on steep grassy slopes below approximately 2400 m as well as on sunny slopes. Areas with glide cracks are to be avoided.

## Snowpack

### Danger patterns

dp 6: cold, loose snow and wind

dp 2: gliding snow

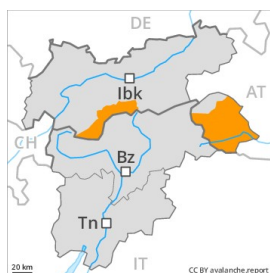
Over a wide area 5 to 15 cm of snow, and even more in some localities, will fall from midday. Over a wide area strong southerly wind. The fresh wind slabs are prone to triggering. They are lying on soft layers. The old snowpack will be in most cases well bonded. The snowpack will become moist at low altitude.

## Tendency

Increase in avalanche danger as a consequence of fresh snow and strong wind.

## Danger Level 3 - Considerable

AM:



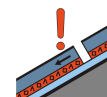
Tendency: Increasing avalanche danger  
 on Saturday 02 02 2019



Wind-drifted snow



Treeline

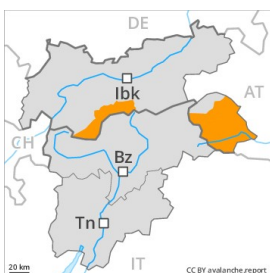


Persistent weak layer



2500m  
1800m

PM:



Tendency: Increasing avalanche danger  
 on Saturday 02 02 2019



New snow



Persistent weak layer



2500m  
1800m

Increase in avalanche danger as a consequence of fresh snow and strong wind, also in areas close to the tree line as well as below the tree line.

Fresh wind slabs can be released easily or naturally in all aspects. As a consequence of fresh snow and strong wind the prevalence and size of the avalanche prone locations will increase in the afternoon, this also applies in areas close to the tree line as well as below the tree line. Dry avalanches can in some cases release deeper layers of the snowpack and reach quite a large size. The conditions are dangerous for winter sport activities outside marked and open pistes. Gliding avalanches can also occur. This applies in particular on steep grassy slopes below approximately 2400 m.

### Snowpack

Danger patterns

dp 6: cold, loose snow and wind

dp 1: deep persistent weak layer

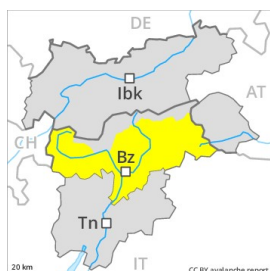
Over a wide area 20 to 30 cm of snow, and even more in some localities, will fall from midday. The wind will be strong to storm force. The snowpack will be prone to triggering over a wide area. The fresh wind slabs will be deposited on the unfavourable surface of an old snowpack. Precarious weak layers exist in the old snowpack, in particular on steep west, north and east facing slopes between approximately 1800 and 2500 m. The snowpack will become moist at low altitude.

### Tendency

Further increase in avalanche danger.

## Danger Level 3 - Considerable

AM:



**Tendency: Increasing avalanche danger**  
 on Saturday 02 02 2019



New snow



1500m



Wind-drifted  
 snow



Treeline

PM:



**Tendency: Increasing avalanche danger**  
 on Saturday 02 02 2019



New snow



1500m



Wind-drifted  
 snow



Treeline

Danger level 3 (considerable) will be reached as the day progresses in these regions.

Gradual increase in avalanche danger as a consequence of fresh snow and stormy weather. Medium-sized and, in isolated cases, large natural avalanches are to be expected in particular on wind-loaded slopes. Avalanches can in some cases penetrate deep layers and reach quite a large size in particular on steep shady slopes. The fresh wind slabs can be released easily. Exposed parts of transportation routes can be endangered in some localities in particular in the regions exposed to heavier precipitation. Slides are to be expected on cut slopes. The conditions are critical for ski touring, freeriding and snowshoe hiking outside marked and open pistes.

### Snowpack

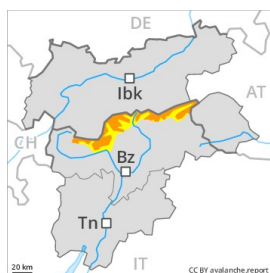
The fresh snow will be deposited on the quite favourable surface of an old snowpack in all aspects. Faceted weak layers exist in the snowpack especially on steep, rather lightly snow-covered shady slopes. As a consequence of fresh snow and a storm force southwesterly wind, sometimes large wind slabs will form as the day progresses over a wide area. The avalanche prone locations are numerous and are barely recognisable because of the poor visibility.

### Tendency

In the regions exposed to heavier precipitation probably danger level 4 (high) will be reached.

## Danger Level 3 - Considerable

AM:



**Tendency: Increasing avalanche danger**  
 on Saturday 02 02 2019



New snow



1500m



Wind-drifted  
 snow



Treeline

PM:



**Tendency: Increasing avalanche danger**  
 on Saturday 02 02 2019



New snow



1500m



Wind-drifted  
 snow



Treeline

Gradual increase in avalanche danger as the precipitation becomes more intense.

Gradual increase in avalanche danger as a consequence of fresh snow and stormy weather. Medium-sized and, in isolated cases, large natural avalanches are to be expected in particular on wind-loaded slopes. Avalanches can in some cases penetrate deep layers and reach quite a large size in particular on steep shady slopes. The fresh wind slabs can be released easily. Exposed parts of transportation routes can be endangered in some localities in particular in the regions exposed to heavier precipitation. Slides are to be expected on cut slopes. The conditions are critical for ski touring, freeriding and snowshoe hiking outside marked and open pistes.

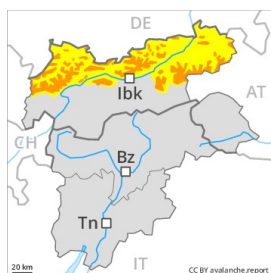
### Snowpack

The fresh snow will be deposited on the quite favourable surface of an old snowpack in all aspects. Faceted weak layers exist in the snowpack especially on steep, rather lightly snow-covered shady slopes. As a consequence of fresh snow and a storm force southwesterly wind, sometimes large wind slabs will form as the day progresses over a wide area. The avalanche prone locations are numerous and are barely recognisable because of the poor visibility.

### Tendency

In the regions exposed to heavier precipitation probably danger level 4 (high) will be reached.

## Danger Level 3 - Considerable



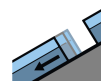
**Tendency: Constant avalanche danger** →  
on Saturday 02 02 2019



Wind-drifted  
snow



Treeline



Gliding snow



2400m

As a consequence of a sometimes strong wind, further wind slabs will form especially above the tree line. Caution is to be exercised in areas with glide cracks.

Fresh wind slabs represent the main danger. The fresh wind slabs are in some cases thick and can be released easily. The avalanche prone locations are to be found in particular adjacent to ridgelines and in gullies and bowls in west to north to east facing aspects. These places are clearly recognisable to the trained eye. Wind slabs in steep terrain are to be bypassed as far as possible. In addition there is a danger of gliding avalanches. This applies on steep grassy slopes below approximately 2400 m as well as on sunny slopes. Areas with glide cracks are to be avoided.

## Snowpack

**Danger patterns**

dp 6: cold, loose snow and wind

dp 2: gliding snow

Over a wide area strong southerly wind. The fresh wind slabs are prone to triggering. They are lying on soft layers. No distinct weak layers exist in the old snowpack.

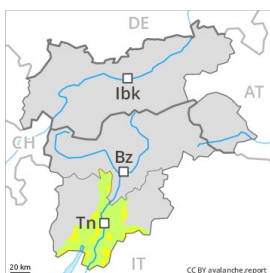
## Tendency

Some snow will fall. The wind will be strong over a wide area.



## Danger Level 3 - Considerable

AM:



**Tendency: Increasing avalanche danger**  
 on Saturday 02 02 2019



Wind-drifted  
 snow



Treeline

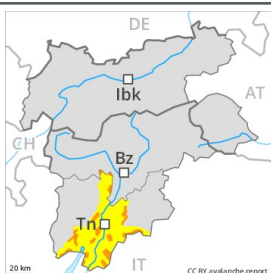


New snow

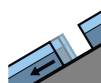


Treeline

PM:



**Tendency: Increasing avalanche danger**  
 on Saturday 02 02 2019



Gliding snow



Treeline



Gliding snow



Treeline

### Fresh snow and wind slabs require caution.

As a consequence of fresh snow and wind a considerable avalanche danger will be encountered over a wide area. The wind slabs represent the main danger. The avalanche prone locations are to be found in particular adjacent to ridgelines and in gullies and bowls above approximately 1800 m. Single backcountry tourers can release avalanches easily, including medium-sized ones.

### Snowpack

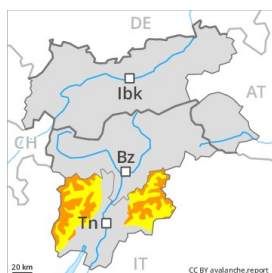
The wind will be strong at times in some localities. The wind slabs will form in all aspects. Much of the fresh and wind-drifted snow represent the main danger. It will be deposited on the unfavourable surface of an old snowpack above the tree line.

### Tendency

Increase in avalanche danger as a consequence of fresh snow and strong wind.

## Danger Level 3 - Considerable

AM:



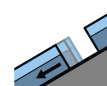
**Tendency: Increasing avalanche danger**  
 on Saturday 02 02 2019



PM:



**Tendency: Increasing avalanche danger**  
 on Saturday 02 02 2019



### Fresh snow and wind slabs require caution.

As a consequence of fresh snow and wind a considerable avalanche danger will be encountered over a wide area. The fresh snow and wind slabs represent the main danger. These are to be found especially above the tree line. Avalanche prone locations are to be found in particular in gullies and bowls, and behind abrupt changes in the terrain. Even single backcountry tourers can release avalanches easily, including medium-sized ones. The fresh wind slabs are to be avoided in particular in very steep terrain.

### Snowpack

The wind will be strong at times in some localities. Much of the fresh and wind-drifted snow represent the main danger. It will be deposited on the unfavourable surface of an old snowpack in all aspects. Wind slabs will form in all aspects.

### Tendency

Further increase in avalanche danger as a consequence of fresh snow and strong wind.