

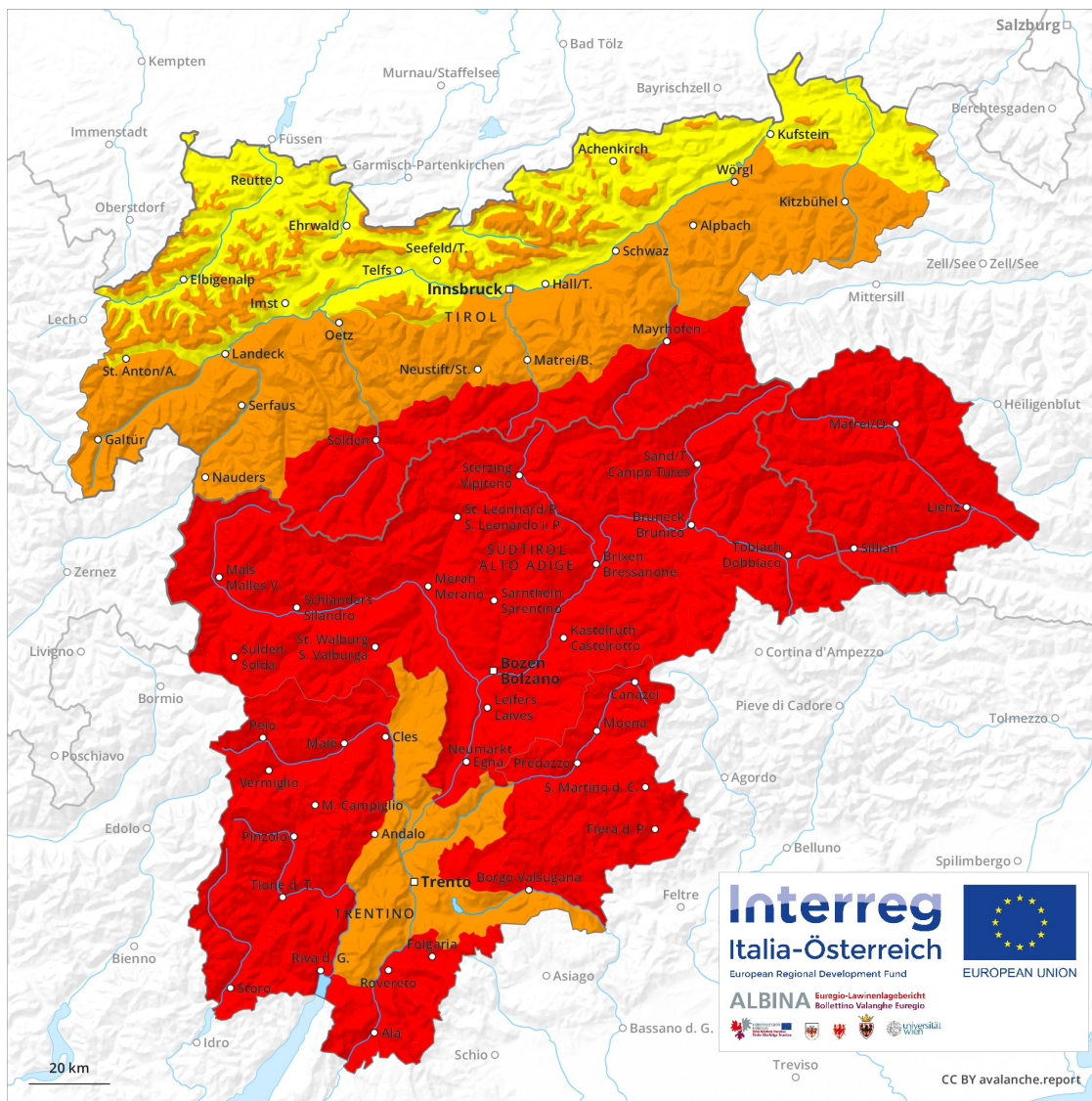
Avalanche Forecast

Saturday 02 02 2019

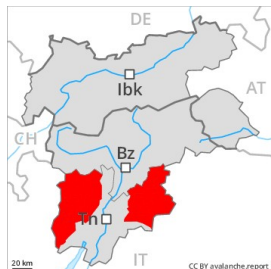
Published 02 02 2019, 08:00



Avalanche.report



Danger Level 4 - High



Tendency: Decreasing avalanche danger
on Sunday 03 02 2019



Wind-drifted
snow



New snow



Fresh snow and wind slabs require caution. High avalanche danger will prevail. Backcountry touring calls for great caution and restraint.

As a consequence of fresh snow and wind a high avalanche danger will be encountered over a wide area. Natural avalanches are possible, even quite large ones. Avalanche prone locations are to be found in particular in gullies and bowls, and behind abrupt changes in the terrain. These are to be found especially above the tree line. Even single backcountry tourers can release avalanches easily, including large ones. The wind slabs are to be avoided in particular in steep terrain. Ski touring, freeriding and snowshoe hiking are to be restricted to moderately steep terrain.

Snowpack

The snowpack will be unstable over a wide area. The wind was strong at times in some localities. Much of the fresh and wind-drifted snow represent the main danger. In many cases fresh snow is lying on an icy crust. It is poorly bonded in all aspects and in all altitude zones.

Tendency

The avalanche danger will decrease gradually.

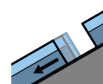
Danger Level 4 - High



Tendency: Decreasing avalanche danger
on Sunday 03 02 2019



New snow



Gliding snow



2400m

High avalanche danger will prevail. A lot of snow will fall over a wide area. The wind will be strong to storm force.

In all regions many large and, in isolated cases, very large avalanches are to be expected as a consequence of fresh snow and strong wind. In particular on very steep slopes and below approximately 2500 m more frequent very large slab avalanches are possible, especially in case of releases originating from leeward starting zones. As the snowfall becomes heavier, the likelihood of natural avalanches being released will increase quickly. The peak of avalanche activity is expected from the second half of the night. In addition the danger of gliding avalanches will increase. This applies in all aspects below approximately 2400 m. Gliding avalanches can be released at any time of day or night. Precautionary closures of exposed transportation routes may be necessary. Closures must be respected and safety instructions of the authorities must be followed.

Snowpack

Danger patterns

dp 6: cold, loose snow and wind

dp 2: gliding snow

Over a wide area 50 to 100 cm of snow, and up to 150 cm in some localities, will fall. Down to low altitudes snow will fall. The snowpack will become moist at low and intermediate altitudes. Until midday the wind will be strong to storm force over a wide area. Much of the fresh and wind-drifted snow will be deposited on the unfavourable surface of an old snowpack. Avalanche prone weak layers exist in the bottom section of the old snowpack in particular on steep west, north and east facing slopes, in particular between approximately 1600 and 2500 m. Avalanche prone weak layers exist in the top section of the old snowpack especially on steep sunny slopes, especially below approximately 2500 m.

Tendency

Slight decrease in avalanche danger as the snowfall eases.

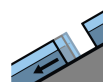
Danger Level 4 - High



Tendency: Decreasing avalanche danger
on Sunday 03 02 2019



New snow



Gliding snow



2400m

High avalanche danger will prevail. A lot of snow will fall over a wide area. The wind will be storm force.

In particular in the regions exposed to heavier precipitation many large and, in isolated cases, very large avalanches are to be expected as a consequence of fresh snow and strong wind, especially in case of releases originating from steep, leeward starting zones below approximately 2500 m. As the snowfall becomes heavier, the likelihood of natural avalanches being released will increase quickly. The peak of avalanche activity is expected from the second half of the night. In addition the danger of gliding avalanches will increase. This applies in all aspects below approximately 2400 m. Gliding avalanches can be released at any time of day or night. Precautionary safety measures may be necessary. Closures must be respected and safety instructions of the authorities must be followed.

Snowpack

Danger patterns

dp 6: cold, loose snow and wind

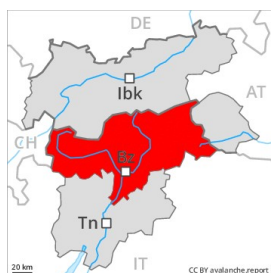
dp 2: gliding snow

Over a wide area 30 to 50 cm of snow. will fall. In particular in the Northern Zillertal Alps, along the border with Italy up to 80 cm of snow. will fall. This applies especially above approximately 1500 m. The snowpack will become moist at low and intermediate altitudes. Until midday the wind will be strong to storm force over a wide area. Much of the fresh and wind-drifted snow will be deposited on the unfavourable surface of an old snowpack. Faceted weak layers exist in the top section of the old snowpack especially on steep sunny slopes, especially between approximately 2300 and 2500 m. Isolated avalanche prone weak layers exist in the bottom section of the old snowpack in particular in the Central Stubai Alps, in particular between approximately 1800 and 2500 m on very steep shady slopes.

Tendency

Sunday: Slight decrease in avalanche danger. Over a wide area 10 to 20 cm of snow, and even more in some localities, will fall. The fresh wind slabs will be covered with fresh snow and therefore difficult to recognise.

Danger Level 4 - High



Tendency: Constant avalanche danger →
on Sunday 03 02 2019



Wind-drifted
snow



New snow



High, level 4.

A lot of snow has fallen. Closures of exposed transportation routes are recommended. 40 cm of snow, and up to 80 cm in some localities, fell in all altitude zones. The sometimes storm force wind has transported the fresh snow significantly. The sometimes large wind slabs are lying on soft layers in all aspects. Medium-sized and large natural avalanches are to be expected in particular from starting zones at higher altitudes. Avalanches can in many places penetrate down to the ground and reach quite a large size. Slides can occur on cut slopes. The conditions are very dangerous for backcountry touring and other off-piste activities.

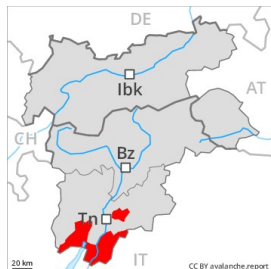
Snowpack

The fresh snow of yesterday is lying on the unfavourable surface of an old snowpack in all aspects. Distinct weak layers exist in the old snowpack. As a consequence of fresh snow and a strong to storm force wind from southerly directions, easily released wind slabs formed in particular in places that are protected from the wind. The avalanche prone locations are widespread and are barely recognisable because of the poor visibility.

Tendency

With the end of the intensive snowfall, the natural avalanche activity will gradually decrease.

Danger Level 4 - High



Tendency: Decreasing avalanche danger
on Sunday 03 02 2019



Wind-drifted
snow



New snow



Fresh snow and wind slabs require caution. High avalanche danger will prevail. Backcountry touring calls for great caution and restraint.

As a consequence of fresh snow and wind a high avalanche danger will be encountered over a wide area. Natural avalanches are possible, even quite large ones. Avalanche prone locations are to be found in particular in gullies and bowls, and behind abrupt changes in the terrain. These are to be found especially above the tree line. Even single backcountry tourers can release avalanches easily, including large ones. The wind slabs are to be avoided in particular in steep terrain. Ski touring, freeriding and snowshoe hiking are to be restricted to moderately steep terrain.

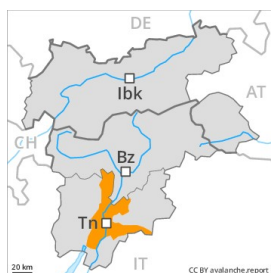
Snowpack

The snowpack will be unstable over a wide area. The wind was strong at times in some localities. Much of the fresh and wind-drifted snow represent the main danger. In many cases fresh snow is lying on an icy crust. It is poorly bonded in all aspects and in all altitude zones.

Tendency

The avalanche danger will decrease gradually.

Danger Level 3 - Considerable



Tendency: Decreasing avalanche danger
on Sunday 03 02 2019



Wind-drifted
snow



New snow



Fresh snow and wind slabs require caution. Considerable avalanche danger will prevail. Backcountry touring calls for extensive experience and restraint.

As a consequence of fresh snow and wind a considerable avalanche danger will be encountered over a wide area. Natural avalanches are possible, even large ones in isolated cases. Avalanche prone locations are to be found in particular in gullies and bowls, and behind abrupt changes in the terrain. These are to be found especially above the tree line. Single backcountry tourers can release avalanches, including large ones. The wind slabs are to be avoided in particular in steep terrain. Backcountry touring calls for careful route selection.

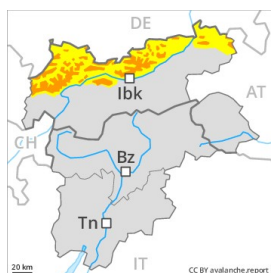
Snowpack

The snowpack will be unstable over a wide area. The wind was strong at times in some localities. Much of the fresh and wind-drifted snow represent the main danger. In some places fresh snow is lying on an icy crust. It is poorly bonded in all aspects and above the tree line.

Tendency

The avalanche danger will decrease gradually.

Danger Level 3 - Considerable



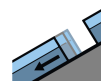
Tendency: Increasing avalanche danger
on Sunday 03 02 2019



Wind-drifted
snow



Treeline



Gliding snow



2400m

Fresh wind slabs can be released easily. Gliding avalanches are still possible.

Fresh wind slabs represent the main danger. As a consequence of a strong to storm force southerly wind, precarious wind slabs formed. Single winter sport participants can release avalanches easily, including medium-sized ones. The avalanche prone locations are to be found in particular adjacent to ridgelines and in gullies and bowls in west to north to east facing aspects. These avalanche prone locations are quite prevalent and are barely recognisable because of the poor visibility. In addition a latent danger of gliding avalanches exists. This applies in particular on steep grassy slopes as well as on sunny slopes below approximately 2400 m.

Snowpack

Danger patterns

dp 6: cold, loose snow and wind

dp 2: gliding snow

Some snow will fall. Until late morning the wind will be strong to storm force. The fresh wind slabs are lying on the unfavourable surface of an old snowpack. No distinct weak layers exist in the bottom section of the old snowpack.

Tendency

Sunday: The avalanche danger will increase but remain within the current danger level. Over a wide area 20 to 30 cm of snow, and even more in some localities, will fall. Fresh wind slabs will be covered with fresh snow and therefore barely recognisable.

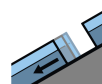
Danger Level 3 - Considerable



Tendency: Constant avalanche danger →
on Sunday 03 02 2019



Wind-drifted
snow



Gliding snow



2400m

Fresh wind slabs can be released easily. Gliding avalanches require caution.

As a consequence of fresh snow and a storm force southerly wind, precarious wind slabs will form in all aspects. Single winter sport participants can release avalanches easily, including medium-sized ones. These avalanche prone locations are numerous and are barely recognisable because of the poor visibility. Whumpfung sounds and the formation of shooting cracks when stepping on the snowpack serve as an alarm indicating the danger. In addition individual small to medium-sized natural avalanches are possible. Especially in regions neighbouring those that are subject to danger level 4 (high) and at elevated altitudes avalanche prone locations are more prevalent and the danger is greater. As a consequence of the rain, the likelihood of gliding avalanches being released will increase a little. This applies on steep grassy slopes below approximately 2400 m.

Snowpack

Danger patterns

dp 6: cold, loose snow and wind

dp 2: gliding snow

Over a wide area 5 to 15 cm of snow, and even more in some localities, will fall, especially in the regions neighbouring those that are subject to danger level 4 (high). Until late morning the wind will be storm force. The extensive wind slabs will be deposited on the unfavourable surface of an old snowpack. Faceted weak layers exist in the top section of the old snowpack on steep sunny slopes, especially between approximately 2300 and 2500 m. No distinct weak layers exist in the bottom section of the old snowpack. The snowpack will become moist at low and intermediate altitudes.

Tendency

Sunday: Over a wide area 10 to 20 cm of snow, and even more in some localities, will fall. Fresh wind slabs will be covered with fresh snow and therefore barely recognisable.