

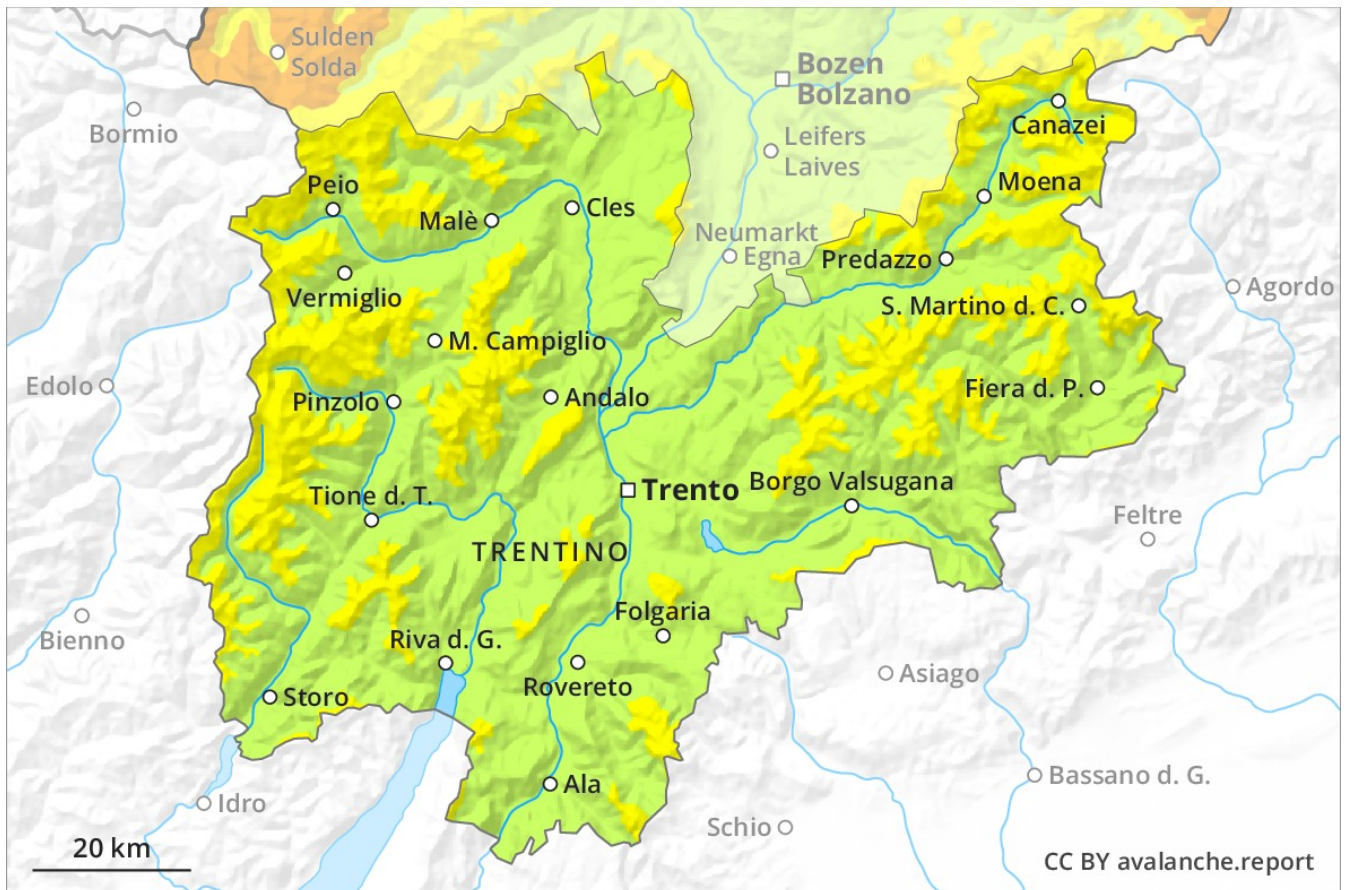
Avalanche Forecast

Thursday 14 02 2019

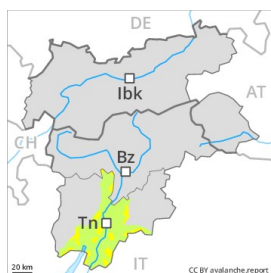
Published 13 02 2019, 17:00



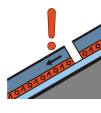
Avalanche.report



Danger Level 2 - Moderate



Tendency: Constant avalanche danger →
on Friday 15 02 2019



Persistent weak layer



Treeline



Wind-drifted snow



Treeline

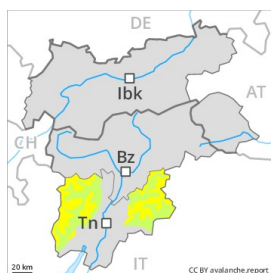
Weak layers deep in the old snowpack necessitate caution.

Wind slabs can be released, even by small loads in isolated cases, but they will be small in most cases. This applies in particular on steep shady slopes and adjacent to ridgelines and in gullies and bowls. The avalanche prone locations are to be found also at transitions from a shallow to a deep snowpack above the tree line. Backcountry touring and other off-piste activities call for careful route selection.

Snowpack

The surface of the snowpack is frozen, but not to a significant depth. Faceted weak layers exist in the bottom section of the snowpack in particular in shady places that are protected from the wind. Below approximately 1600 m thus far only a little snow is lying.

Danger Level 2 - Moderate



Tendency: Constant avalanche danger →
on Friday 15 02 2019



Wind-drifted
snow



Treeline



Persistent
weak layer



1600m

Fresh wind slabs are to be evaluated critically.

In particular adjacent to ridgelines the wind slabs have increased in size appreciably in the last few days. They are to be avoided whenever possible in all aspects. The fresh wind slabs can as before be released by small loads, but they will be small in most cases, caution is to be exercised in particular adjacent to ridgelines as well as in gullies and bowls, and behind abrupt changes in the terrain above the tree line. Backcountry touring and other off-piste activities call for experience in the assessment of avalanche danger and careful route selection.

Snowpack

The surface of the snowpack is frozen, but not to a significant depth. Faceted weak layers exist in the bottom section of the snowpack in particular in shady places that are protected from the wind. Whumpfung sounds and the formation of shooting cracks when stepping on the snowpack are a clear indication of a weakly bonded snowpack.

Tendency

The snowpack will be generally well bonded.