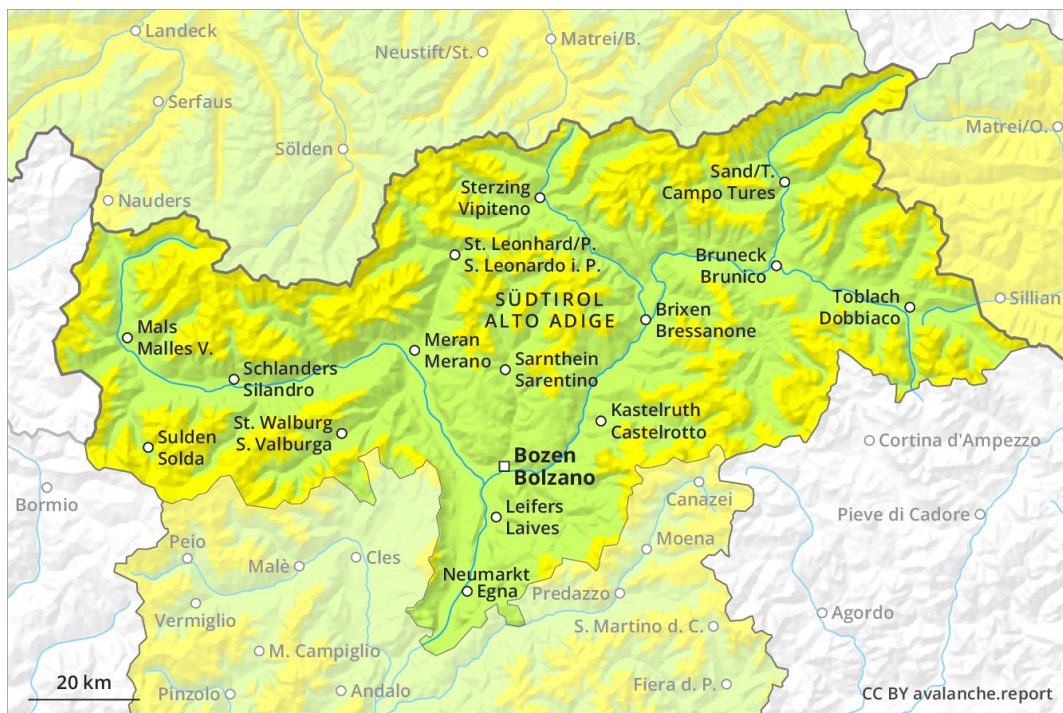
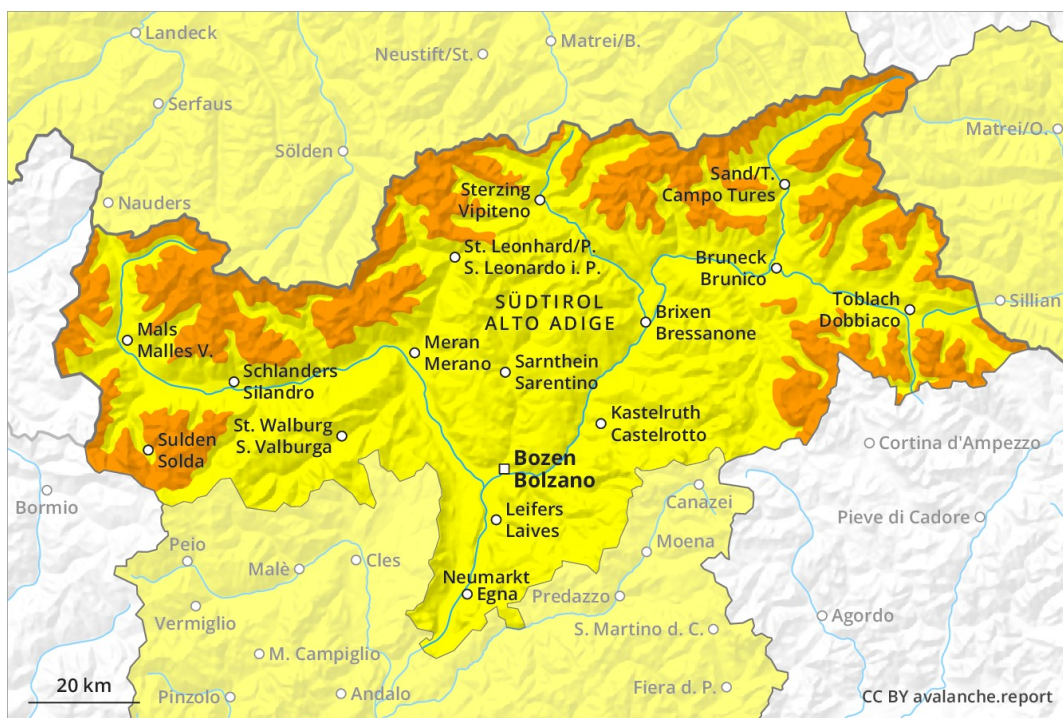


AM

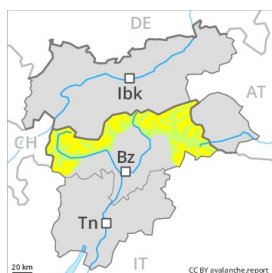


PM



Danger Level 3 - Considerable

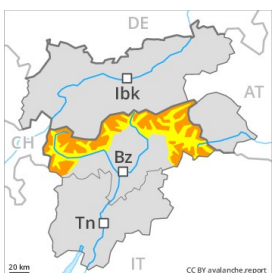
AM:



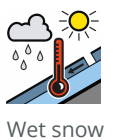
Tendency: Constant avalanche danger →
 on Saturday 16 02 2019



PM:



Tendency: Constant avalanche danger →
 on Saturday 16 02 2019



Dry slab avalanches and wet avalanches during the day require caution.

A clear night will be followed by quite favourable conditions generally, but the danger of wet avalanches will increase later. Backcountry tours and off-piste skiing should be started very early and concluded timely. The wind slabs have bonded quite well with the old snowpack in particular on steep sunny slopes. They can be released, especially by large additional loads. Faceted weak layers exist in the bottom section of the old snowpack especially on steep west, north and east facing slopes. This applies in shady places that are protected from the wind and at a distance from ridgelines. The avalanche prone locations are to be found in particular at transitions from a shallow to a deep snowpack and in areas close to the tree line. In highly frequented off-piste terrain and on popular backcountry touring routes the avalanche situation is a little more favourable. The conditions are quite favourable for backcountry touring and other off-piste activities.

Snowpack

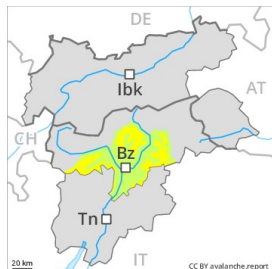
The strong wind has transported the fresh and old snow significantly. The avalanche prone locations are to be found in particular on northwest to north to southeast facing wind-loaded slopes above approximately 2000 m and adjacent to ridgelines in all aspects. Faceted weak layers exist in the bottom section of the snowpack in particular in shady places that are protected from the wind. The surface of the snowpack is frozen, but not to a significant depth will soften during the day. As a consequence of warming during the day and the solar radiation, the likelihood of slab avalanches being released will increase in particular on steep sunny slopes below approximately 2600 m.

Tendency

As a consequence of warming during the day and the solar radiation, the likelihood of wet avalanches during the day being released will increase gradually in particular on rocky sunny slopes.

Danger Level 2 - Moderate

AM:



Tendency: Constant avalanche danger →
 on Saturday 16 02 2019



PM:



Tendency: Constant avalanche danger →
 on Saturday 16 02 2019



Dry slab avalanches and wet avalanches during the day require caution.

A clear night will be followed by quite favourable conditions generally, but the danger of wet avalanches will increase later. Backcountry tours and off-piste skiing should be started very early and concluded timely. The wind slabs have bonded quite well with the old snowpack in particular on steep sunny slopes. They can be released, especially by large additional loads. Faceted weak layers exist in the bottom section of the old snowpack especially on steep west, north and east facing slopes. This applies in shady places that are protected from the wind and at a distance from ridgelines. The avalanche prone locations are to be found in particular at transitions from a shallow to a deep snowpack and in areas close to the tree line. In highly frequented off-piste terrain and on popular backcountry touring routes the avalanche situation is a little more favourable. The conditions are quite favourable for backcountry touring and other off-piste activities.

Snowpack

The strong wind has transported the fresh and old snow significantly. The avalanche prone locations are to be found in particular on northwest to north to southeast facing wind-loaded slopes above approximately 2000 m and adjacent to ridgelines in all aspects. Faceted weak layers exist in the bottom section of the snowpack in particular in shady places that are protected from the wind. The surface of the snowpack is frozen, but not to a significant depth will soften during the day.

Tendency

As a consequence of warming during the day and the solar radiation, the likelihood of wet avalanches during the day being released will increase gradually in particular on rocky sunny slopes.