

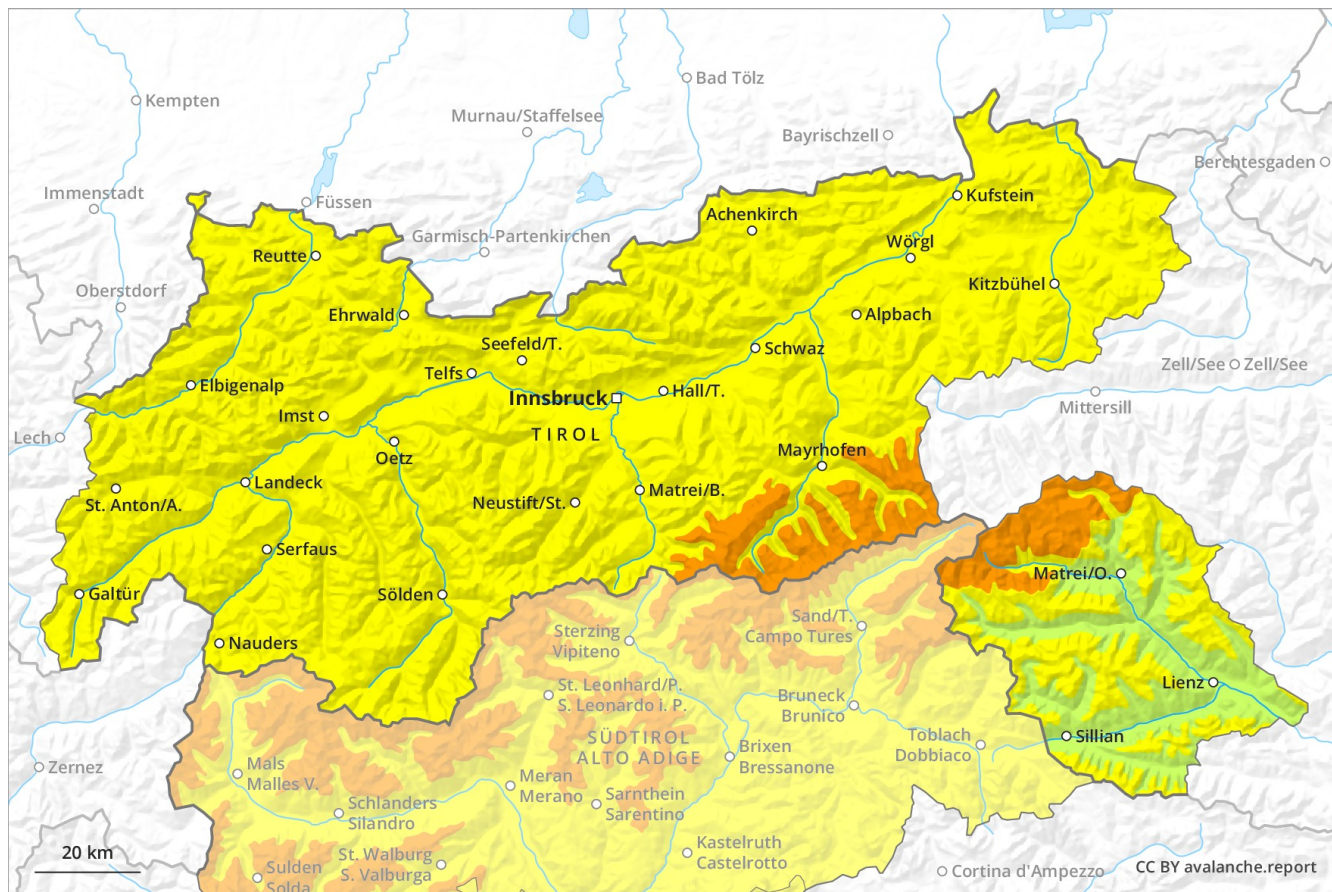
# Avalanche Forecast

## Friday 08 03 2019

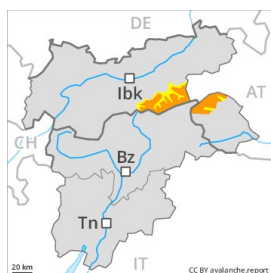
Published 07 03 2019, 17:00



Avalanche.report



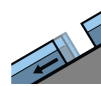
## Danger Level 3 - Considerable



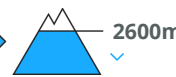
**Tendency: Constant avalanche danger** →  
on Saturday 09 03 2019



Wind-drifted  
snow



Gliding snow



Fresh wind slabs represent the main danger. Caution is to be exercised in areas with glide cracks.

As a consequence of fresh snow and a strong to storm force wind from variable directions, sometimes avalanche prone wind slabs will form by the early morning. The avalanche prone locations are to be found in particular on very steep shady slopes above approximately 2200 m, also adjacent to ridgelines in all aspects at high altitudes and in high Alpine regions. The fresh wind slabs can be released, even by a single winter sport participant and reach large size in isolated cases. This applies in the regions exposed to heavier precipitation along the border with Italy. In addition a latent danger of gliding avalanches exists. This applies in particular on steep sunny slopes below approximately 2600 m. Caution is to be exercised in areas with glide cracks. As a consequence of the solar radiation, the likelihood of moist loose snow avalanches being released will increase a little on extremely steep sunny slopes.

### Snowpack

#### Danger patterns

dp 6: cold, loose snow and wind

dp 2: gliding snow

10 to 30 cm of snow, and even more in some localities, will fall until the early morning above approximately 1500 m. The wind was strong to storm force in some regions. The fresh wind slabs will be deposited on soft layers on shady slopes above approximately 2200 m. In some cases the wind slabs have bonded poorly with the old snowpack. The old snowpack will be stable over a wide area. The snowpack will be wet all the way through at low and intermediate altitudes. The surface of the snowpack will soften during the day. This applies in particular on sunny slopes at low and intermediate altitudes.

### Tendency

The avalanche danger will persist.

## Danger Level 2 - Moderate



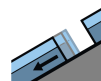
**Tendency: Constant avalanche danger** →  
 on Saturday 09 03 2019



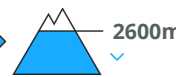
Wind-drifted  
 snow



2200m



Gliding snow



2600m

Fresh wind slabs require caution. Caution is to be exercised in areas with glide cracks. On extremely steep sunny slopes small moist loose snow slides are to be expected.

As a consequence of fresh snow and a strong to storm force wind from variable directions, sometimes avalanche prone wind slabs will form by the early morning. The avalanche prone locations are to be found in particular on very steep shady slopes above approximately 2200 m, also adjacent to ridgelines in all aspects at high altitudes and in high Alpine regions. The fresh wind slabs can be released, even by a single winter sport participant and reach medium size. At elevated altitudes avalanche prone locations are more prevalent and the danger is slightly greater. In addition a latent danger of gliding avalanches exists. This applies in particular on steep sunny slopes below approximately 2600 m. Caution is to be exercised in areas with glide cracks. As a consequence of the solar radiation, the likelihood of moist loose snow avalanches being released will increase a little on extremely steep sunny slopes.

### Snowpack

**Danger patterns**

dp 6: cold, loose snow and wind

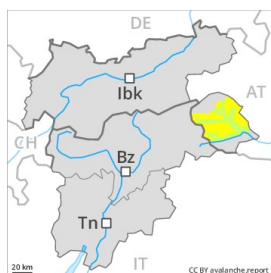
dp 2: gliding snow

5 to 20 cm of snow. will fall until the early morning above approximately 1500 m. The wind was strong to storm force in some regions. The fresh wind slabs will be deposited on soft layers on shady slopes above approximately 2200 m. In some cases the wind slabs have bonded poorly with the old snowpack. The old snowpack will be stable over a wide area. The old snowpack will be moist at low and intermediate altitudes. The surface of the snowpack will soften during the day. This applies in particular on sunny slopes at low and intermediate altitudes.

### Tendency

The avalanche danger will persist.

## Danger Level 2 - Moderate



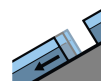
**Tendency: Constant avalanche danger** →  
 on Saturday 09 03 2019



Wind-drifted  
 snow



Treeline



Gliding snow



2600m

Fresh wind slabs require caution. Caution is to be exercised in areas with glide cracks.

As a consequence of fresh snow and a strong to storm force wind from variable directions, sometimes avalanche prone wind slabs will form by the early morning. The avalanche prone locations are to be found in particular on very steep shady slopes above the tree line, also adjacent to ridgelines in all aspects at high altitudes and in high Alpine regions. The fresh wind slabs can be released, even by a single winter sport participant and reach medium size. At elevated altitudes avalanche prone locations are more prevalent and the danger is slightly greater. In addition a low (level 1) danger of gliding avalanches exists. This applies in particular on steep sunny slopes below approximately 2600 m. Caution is to be exercised in areas with glide cracks.

### Snowpack

**Danger patterns**

dp 6: cold, loose snow and wind

dp 2: gliding snow

5 to 20 cm of snow. will fall until the early morning above approximately 1500 m. The wind was strong to storm force in some regions. The fresh wind slabs will be deposited on soft layers on shady slopes above the tree line. In some cases the wind slabs have bonded poorly with the old snowpack. The old snowpack will be stable over a wide area. The old snowpack will be moist at low and intermediate altitudes.

### Tendency

The avalanche danger will persist.

## Danger Level 2 - Moderate



**Tendency: Constant avalanche danger** →  
on Saturday 09 03 2019



Wind-drifted  
snow



Treeline

### Fresh wind slabs require caution.

As a consequence of fresh snow and a strong to storm force wind from variable directions, sometimes avalanche prone wind slabs will form by the early morning. The avalanche prone locations are to be found on very steep shady slopes above the tree line. The fresh wind slabs can be released, even by a single winter sport participant, but they will be small in most cases. At elevated altitudes avalanche prone locations are more prevalent.

### Snowpack

**Danger patterns**

dp 6: cold, loose snow and wind

5 to 15 cm of snow, and even more in some localities, will fall until the early morning. The wind was strong to storm force in some regions. The fresh wind slabs will be deposited on soft layers on shady slopes above the tree line. In some cases the wind slabs have bonded poorly with the old snowpack. The old snowpack will be stable over a wide area. The old snowpack will be moist at low and intermediate altitudes.

### Tendency

The avalanche danger will persist.