

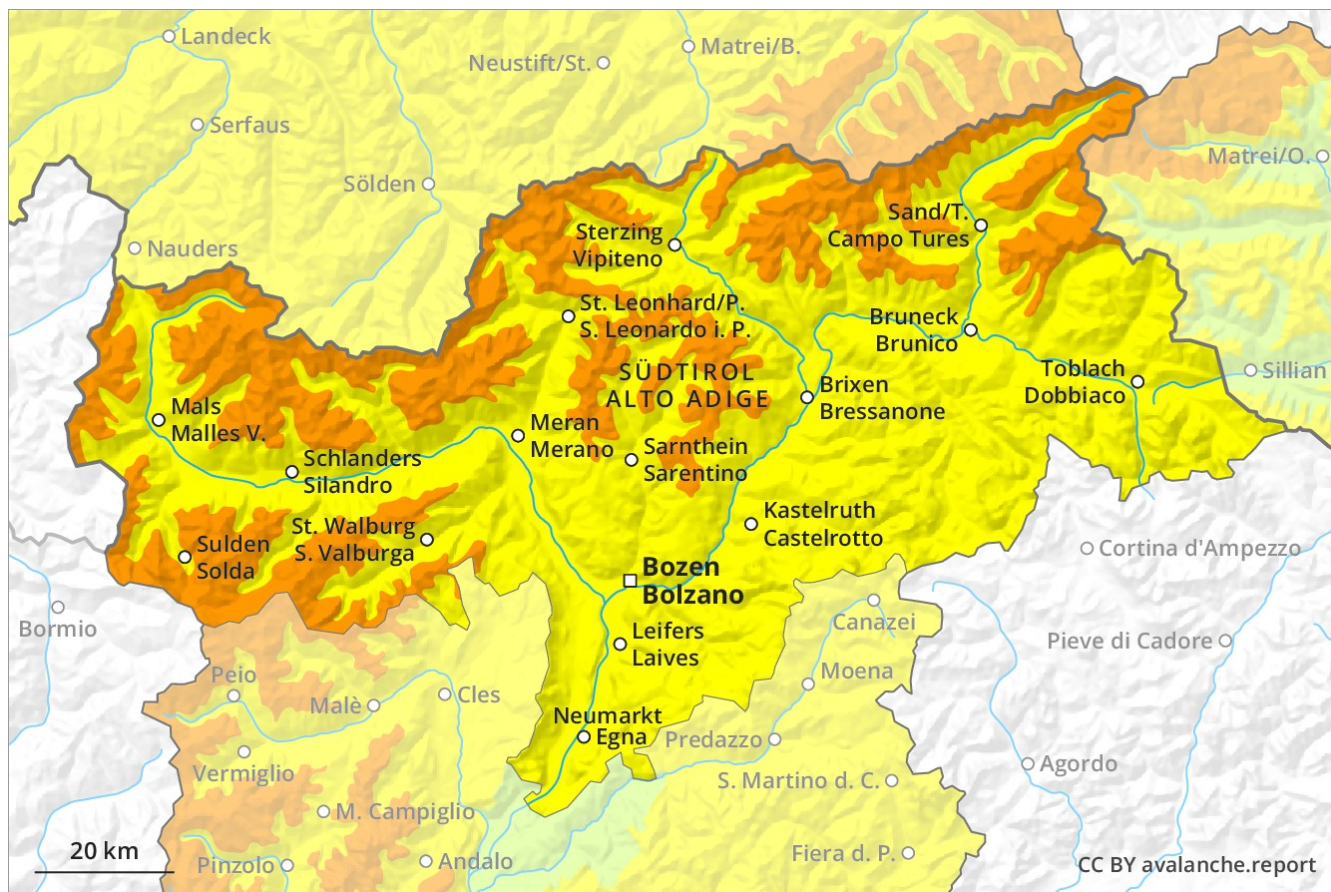
Avalanche Forecast

Friday 08 03 2019

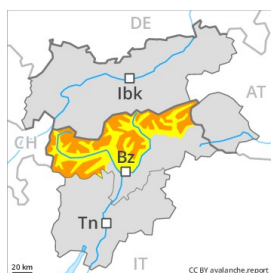
Published 07 03 2019, 17:00



Avalanche.report



Danger Level 3 - Considerable



Tendency: Constant avalanche danger →
on Saturday 09 03 2019



Wind-drifted
snow



Wind slabs have formed in all aspects.

The fresh wind slabs can over a wide area be released by a single winter sport participant. In regions exposed to heavier precipitation avalanche prone locations are more widespread. Some small and medium-sized natural avalanches are possible. Dry avalanches can in isolated cases be released in the old snowpack by large loads. This applies especially at transitions from a shallow to a deep snowpack especially above approximately 2000 m. Mostly avalanches are medium-sized.

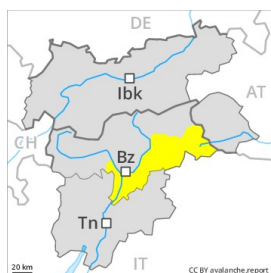
Snowpack

Above approximately 1500 m snow has fallen over a wide area. The wind was storm force in some cases. In particular adjacent to ridgelines and in gullies and bowls as well as in high Alpine regions easily released wind slabs formed. Faceted weak layers exist deeper in the old snowpack especially in shady places that are protected from the wind. The weather will be sunny at times.

Tendency

Gradual decrease in avalanche danger as a consequence of the ceasing of precipitation.

Danger Level 2 - Moderate



Tendency: Constant avalanche danger →
on Saturday 09 03 2019



Wind-drifted
snow



Treeline

Fresh snow and wind slabs in particular adjacent to ridgelines and in gullies and bowls.

Dry and moist avalanches are possible as the day progresses, but they will be mostly small. In addition the wind slabs are easily triggered. This applies especially on steep slopes adjacent to ridgelines and in pass areas. These avalanche prone locations are clearly recognisable to the trained eye. Even a small avalanche can sweep snow sport participants along and give rise to falls.

Snowpack

Over a wide area up to 10 cm of snow, and up to 15 cm in some localities, fell above approximately 1500 m. The wind was strong to storm force. In particular adjacent to ridgelines and in gullies and bowls as well as in high Alpine regions sometimes easily released wind slabs formed. Faceted weak layers exist deeper in the old snowpack especially in shady places that are protected from the wind.

Tendency

The avalanche danger will persist.