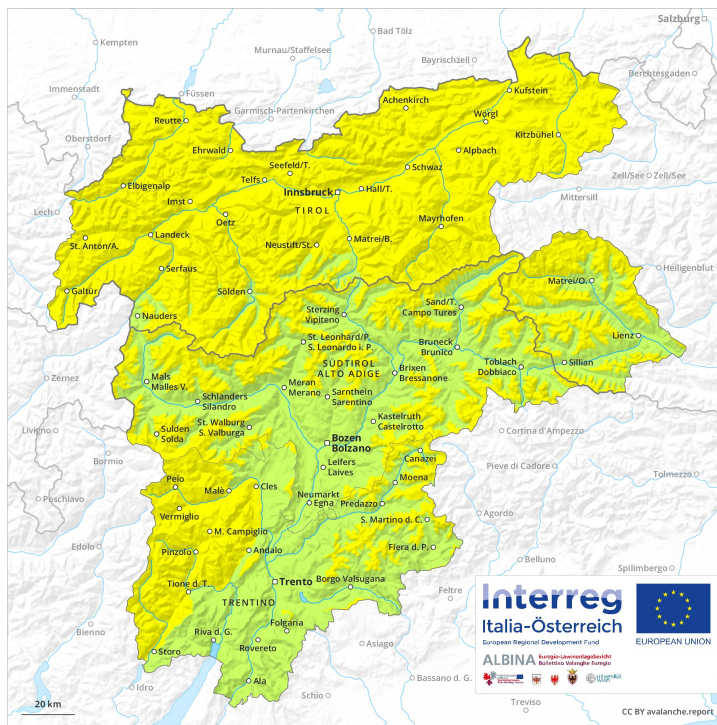
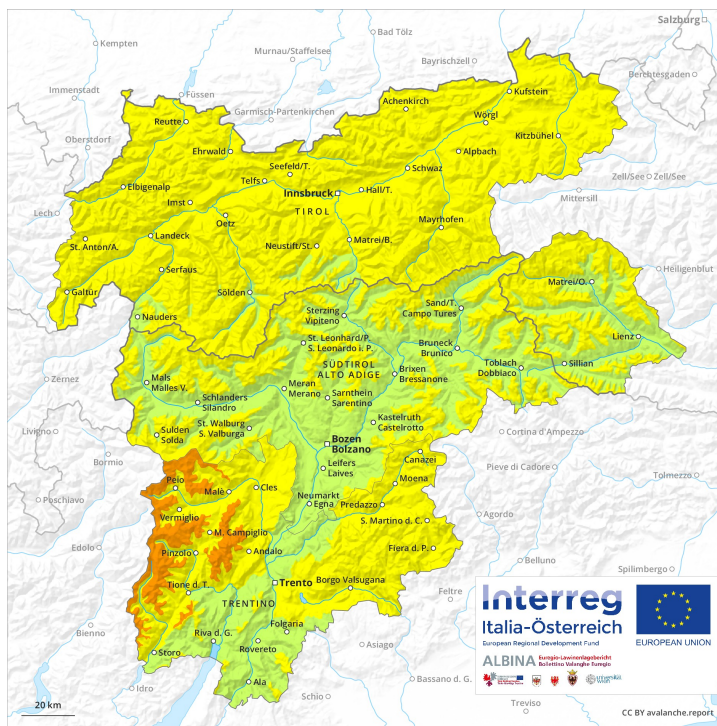




AM

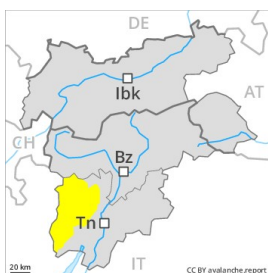


PM



Danger Level 3 - Considerable

AM:



Tendency: **Constant avalanche danger** →
 on Sunday 10 03 2019



Wind-drifted
 snow



Treeline

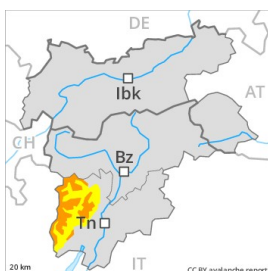


New snow



1500m

PM:



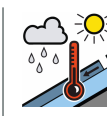
Tendency: **Constant avalanche danger** →
 on Sunday 10 03 2019



Wind-drifted
 snow



Treeline



Wet snow



2400m

Fresh snow and wind slabs in particular adjacent to ridgelines and in gullies and bowls.

A clear night will be followed in the early morning by favourable conditions for a short time, but the avalanche danger will increase later. On wind-loaded slopes and adjacent to ridgelines and in gullies and bowls individual natural avalanches are possible, but they can reach medium size in isolated cases. The sometimes avalanche-prone wind slabs of the last few days must be evaluated with care and prudence in all aspects. These can in many cases be released by small loads. The avalanche prone locations are widespread but are clearly recognisable to the trained eye.

Snowpack

In some localities 20 to 30 cm of snow, and even more in some localities, has fallen in the last few days above approximately 1500 m. The wind was moderate to strong at times. In particular adjacent to ridgelines and in gullies and bowls sometimes avalanche prone wind slabs formed. The fresh snow and wind slabs of Thursday are bonding well with the old snowpack in particular on sunny slopes. Faceted weak layers exist deeper in the old snowpack especially in shady places that are protected from the wind.

Tendency

The danger of dry and wet avalanches will increase during the day, reaching danger level 3 (considerable).

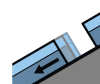
Danger Level 2 - Moderate



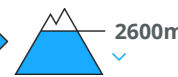
Tendency: Increasing avalanche danger
 on Sunday 10 03 2019



Wind-drifted
 snow



Gliding snow



Fresh wind slabs require caution. Caution is to be exercised in areas with glide cracks.

The fresh wind slabs of the last few days can be released by a single winter sport participant in some cases in particular on northwest to north to northeast facing aspects above approximately 2200 m. The avalanche prone locations are to be found also adjacent to ridgelines in all aspects above approximately 3000 m, especially on very steep east facing slopes. At elevated altitudes avalanche prone locations are more widespread. In addition a low (level 1) danger of gliding avalanches exists. This applies in particular on steep sunny slopes below approximately 2600 m, especially in the regions with a lot of snow. Caution is to be exercised in areas with glide cracks.

Snowpack

Danger patterns

dp 6: cold, loose snow and wind

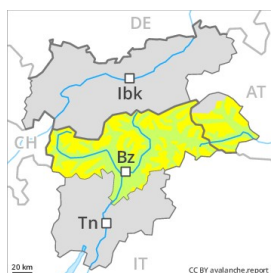
dp 2: gliding snow

The fresh wind slabs are lying on soft layers in particular on northwest to north to northeast facing aspects above approximately 2200 m. They are mostly small but in some cases prone to triggering. The fresh wind slabs have bonded well with the old snowpack on steep sunny slopes and generally at low and intermediate altitudes. The old snowpack will be stable over a wide area. The snowpack will be moist at low and intermediate altitudes.

Tendency

Increase in avalanche danger as a consequence of fresh snow and strong wind.

Danger Level 2 - Moderate



Tendency: Increasing avalanche danger
on Sunday 10 03 2019



Wind-drifted
snow



Fresh wind slabs require caution. Caution is to be exercised in areas with glide cracks.

The fresh wind slabs of the last few days can be released by a single winter sport participant in some cases in particular on northwest to north to east facing aspects above approximately 2200 m. The avalanche prone locations are to be found also adjacent to ridgelines in all aspects above approximately 3000 m. At elevated altitudes avalanche prone locations are more prevalent and the danger is slightly greater. In addition a low (level 1) danger of gliding avalanches exists. This applies in particular on steep sunny slopes below approximately 2600 m, especially in the regions with a lot of snow in the north. Caution is to be exercised in areas with glide cracks. Slight increase in danger of gliding avalanches and moist snow slides as a consequence of warming during the day and solar radiation.

Snowpack

Danger patterns

dp 6: cold, loose snow and wind

dp 2: gliding snow

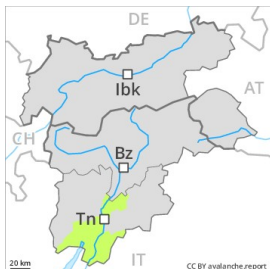
The westerly wind will transport the fresh and old snow. The fresh wind slabs are lying on soft layers in particular on northwest to north to east facing aspects above approximately 2200 m. They are mostly rather small but in some cases prone to triggering. In the regions with a lot of snow the wind slabs are larger. The fresh wind slabs have bonded well with the old snowpack on steep sunny slopes and generally at low and intermediate altitudes. The old snowpack will be in most cases stable. Faceted weak layers exist in the bottom section of the old snowpack in particular on shady slopes. The snowpack will be moist at low and intermediate altitudes.

Tendency

The avalanche danger will increase, in the regions exposed to snowfall in particular in the north.

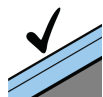
Danger Level 2 - Moderate

AM:



Treeline

Tendency: Constant avalanche danger →
on Sunday 10 03 2019

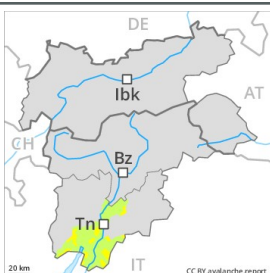


Favourable situation



Treeline

PM:



Treeline

Tendency: Constant avalanche danger →
on Sunday 10 03 2019



Wet snow



Treeline

Fresh snow and wind slabs above approximately 1800 m.

The mostly small wind slabs must be evaluated with care and prudence in all aspects. These are mostly shallow but can be released by large loads at their margins in particular. The avalanche prone locations are to be found in particular on northwest to north to southeast facing aspects above the tree line. As a consequence of warming during the day and the solar radiation, the likelihood of wet loose snow avalanches being released will increase gradually in particular on steep sunny slopes at intermediate altitudes.

Snowpack

Up to 2000 m and above rain has fallen in the last few days in particular in the Etschtal. Below approximately 1800 m from a snow sport perspective, in most cases insufficient snow is lying. The wind was moderate to strong at times. In particular adjacent to ridgelines and in gullies and bowls mostly small wind slabs formed. The old snowpack will be generally subject to considerable local variations. On south facing slopes thus far only a little snow is lying in all altitude zones.

Tendency

In all aspects a mostly favourable avalanche situation will prevail. The danger of moist avalanches will increase a little during the day.

Danger Level 2 - Moderate



Tendency: Increasing avalanche danger
 on Sunday 10 03 2019



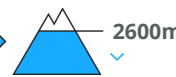
Wind-drifted
 snow



2200m



Gliding snow



2600m

Fresh wind slabs require caution. Caution is to be exercised in areas with glide cracks.

The fresh wind slabs of the last few days can be released by a single winter sport participant in some cases in particular on northwest to north to northeast facing aspects above approximately 2200 m. The avalanche prone locations are to be found also adjacent to ridgelines in all aspects above approximately 3000 m, especially on very steep east facing slopes. At elevated altitudes avalanche prone locations are more widespread. In addition a latent danger of gliding avalanches exists. This applies in particular on steep sunny slopes below approximately 2600 m, especially in the regions with a lot of snow. Caution is to be exercised in areas with glide cracks.

Snowpack

Danger patterns

dp 6: cold, loose snow and wind

dp 2: gliding snow

The fresh wind slabs are lying on soft layers in particular on northwest to north to northeast facing aspects above approximately 2200 m. They are mostly small but in some cases prone to triggering. The fresh wind slabs have bonded well with the old snowpack on steep sunny slopes and generally at low and intermediate altitudes. The old snowpack will be stable over a wide area. The snowpack will be moist at low and intermediate altitudes.

Tendency

Increase in avalanche danger as a consequence of fresh snow and strong wind.

Danger Level 2 - Moderate



Tendency: Increasing avalanche danger
on Sunday 10 03 2019



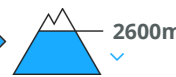
Wind-drifted
snow



2200m



Gliding snow



2600m

Fresh wind slabs require caution. Caution is to be exercised in areas with glide cracks.

The fresh wind slabs of the last few days can be released by a single winter sport participant in some cases in particular on northwest to north to northeast facing aspects above approximately 2200 m. The avalanche prone locations are to be found also adjacent to ridgelines in all aspects above approximately 3000 m, especially on very steep east facing slopes. At elevated altitudes avalanche prone locations are more widespread. In addition a latent danger of gliding avalanches exists. This applies in particular on steep sunny slopes below approximately 2600 m, especially in the regions with a lot of snow. Caution is to be exercised in areas with glide cracks. Slight increase in danger of gliding avalanches and moist snow slides as a consequence of warming during the day and solar radiation.

Snowpack

Danger patterns

dp 6: cold, loose snow and wind

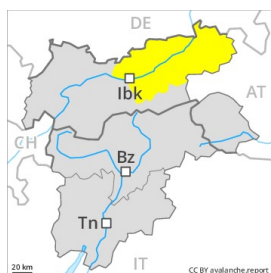
dp 2: gliding snow

The fresh wind slabs are lying on soft layers in particular on northwest to north to northeast facing aspects above approximately 2200 m. They are mostly small but in some cases prone to triggering. The fresh wind slabs have bonded well with the old snowpack on steep sunny slopes and generally at low and intermediate altitudes. The old snowpack will be stable over a wide area. The snowpack will be moist at low and intermediate altitudes.

Tendency

Increase in avalanche danger as a consequence of fresh snow and strong wind.

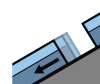
Danger Level 2 - Moderate



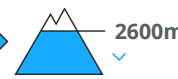
Tendency: Increasing avalanche danger
 on Sunday 10 03 2019



Wind-drifted
 snow



Gliding snow



Fresh wind slabs require caution. Caution is to be exercised in areas with glide cracks.

The fresh wind slabs of the last few days can be released by a single winter sport participant in some cases in particular on northwest to north to northeast facing aspects above approximately 2200 m. In addition a latent danger of gliding avalanches exists. This applies in particular on steep sunny slopes below approximately 2600 m, especially in the regions with a lot of snow. Caution is to be exercised in areas with glide cracks. Slight increase in danger of gliding avalanches and moist snow slides as a consequence of warming during the day and solar radiation.

Snowpack

Danger patterns

dp 6: cold, loose snow and wind

dp 2: gliding snow

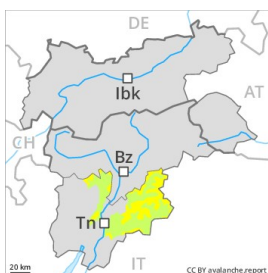
The fresh wind slabs are lying on soft layers in particular on northwest to north to northeast facing aspects above approximately 2200 m. They are mostly small but in some cases prone to triggering. The fresh wind slabs have bonded well with the old snowpack on steep sunny slopes and generally at low and intermediate altitudes. The old snowpack will be stable over a wide area. The snowpack will be moist at low and intermediate altitudes.

Tendency

Increase in avalanche danger as a consequence of fresh snow and strong wind.

Danger Level 2 - Moderate

AM:



Tendency: Constant avalanche danger →
 on Sunday 10 03 2019

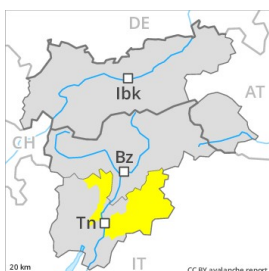


Wind-drifted
 snow



Treeline

PM:



Tendency: Constant avalanche danger →
 on Sunday 10 03 2019



Wind-drifted
 snow



Treeline



Wet snow



2400m

Fresh wind slabs represent the main danger.

A clear night will be followed in the early morning by quite favourable conditions generally, but the avalanche danger will increase later. On wind-loaded slopes and adjacent to ridgelines more natural avalanches are possible, but they will be mostly small. The mostly shallow wind slabs of the last few days must be evaluated with care and prudence in all aspects. These can in some places be released by small loads. This applies especially on very steep shady slopes adjacent to ridgelines and in pass areas. These avalanche prone locations are clearly recognisable to the trained eye.

Snowpack

In some localities 5 to 15 cm of snow, and up to 20 cm in some localities, has fallen in the last few days above approximately 1500 m. The wind was moderate to strong at times. In particular adjacent to ridgelines and in gullies and bowls mostly small wind slabs formed. Faceted weak layers exist deeper in the old snowpack especially in shady places that are protected from the wind.

Tendency

The danger of dry and moist avalanches will increase a little during the day.