

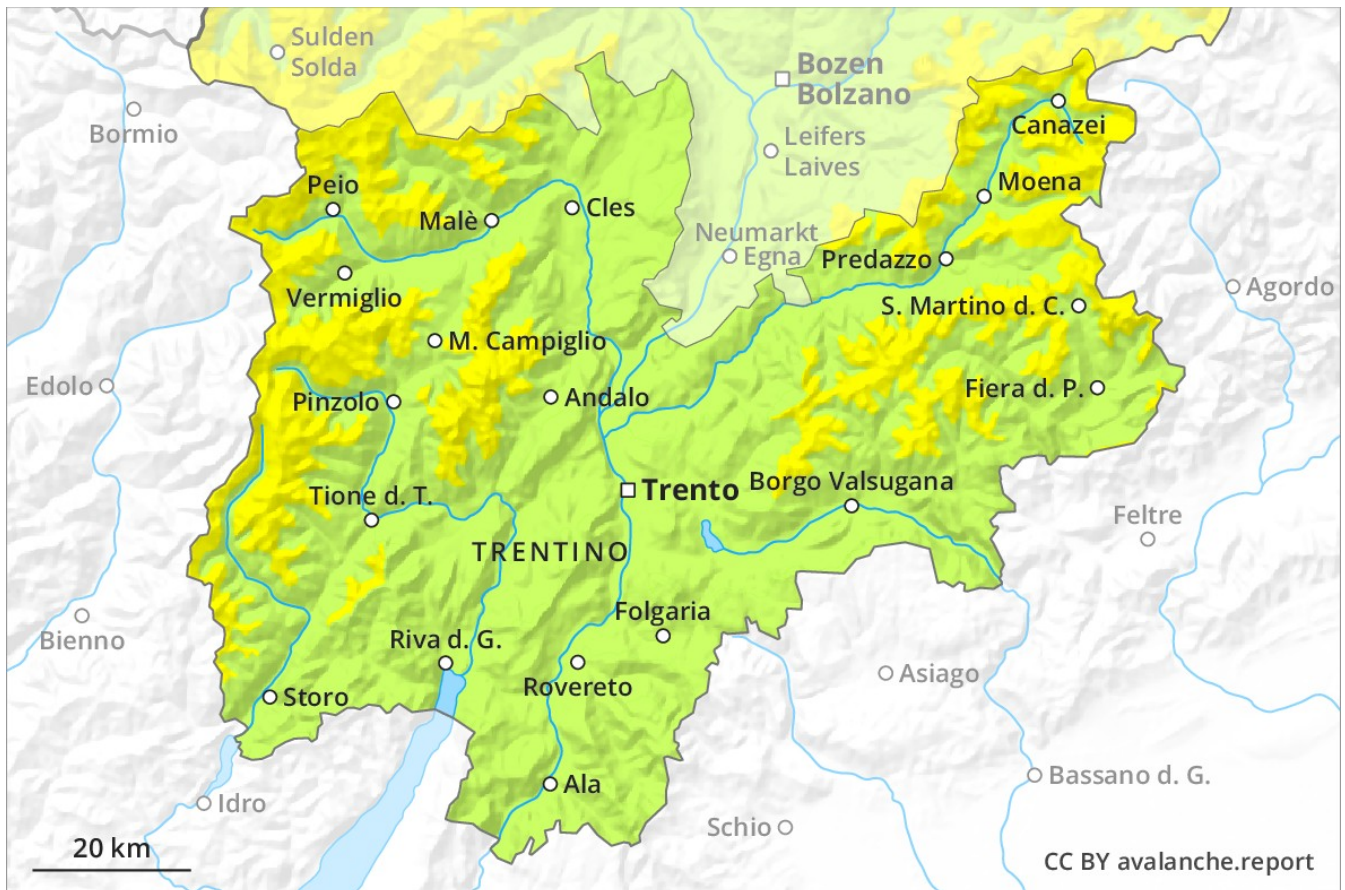
Avalanche Forecast

Monday 11 03 2019

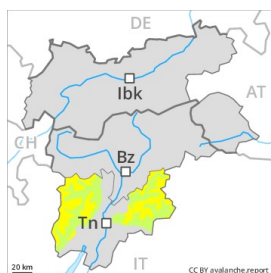
Published 10 03 2019, 17:00



Avalanche.report



Danger Level 2 - Moderate



Tendency: Constant avalanche danger →
on Tuesday 12 03 2019



Wind-drifted
snow



Treeline

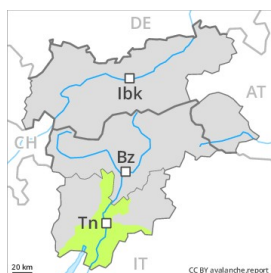
Wind slabs in particular adjacent to ridgelines and in gullies and bowls.

On wind-loaded slopes and adjacent to ridgelines and in gullies and bowls individual natural avalanches are possible, but they can reach medium size in isolated cases. The sometimes avalanche-prone wind slabs of the last few days must be evaluated with care and prudence in all aspects. These can be released, in particular by large loads. The avalanche prone locations are numerous but are clearly recognisable to the trained eye.

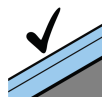
Snowpack

In the last few days the wind has been moderate to strong at times. In particular adjacent to ridgelines and in gullies and bowls sometimes avalanche prone wind slabs formed. The fresh snow and wind slabs of Thursday have bonded quite well with the old snowpack in all aspects. Faceted weak layers exist deeper in the old snowpack especially in shady places that are protected from the wind.

Danger Level 1 - Low



Tendency: Constant avalanche danger →
on Tuesday 12 03 2019



Favourable situation



Treeline

Wind slabs in particular adjacent to ridgelines in all aspects. From a snow sport perspective, in most cases insufficient snow is lying.

The mostly small wind slabs can be released, especially by large additional loads, in all aspects. The avalanche prone locations are to be found in particular on northwest to north to southeast facing aspects above the tree line. At elevated altitudes a mostly favourable avalanche situation will prevail.

Snowpack

Up to 2000 m and above rain has fallen in the last few days in particular in the Etschtal. Below approximately 1800 m only a little snow is lying on north and northeast facing slopes. On south facing slopes no snow is lying in all altitude zones. The old snowpack will be generally subject to considerable local variations. In particular adjacent to ridgelines and in gullies and bowls mostly small wind slabs formed.