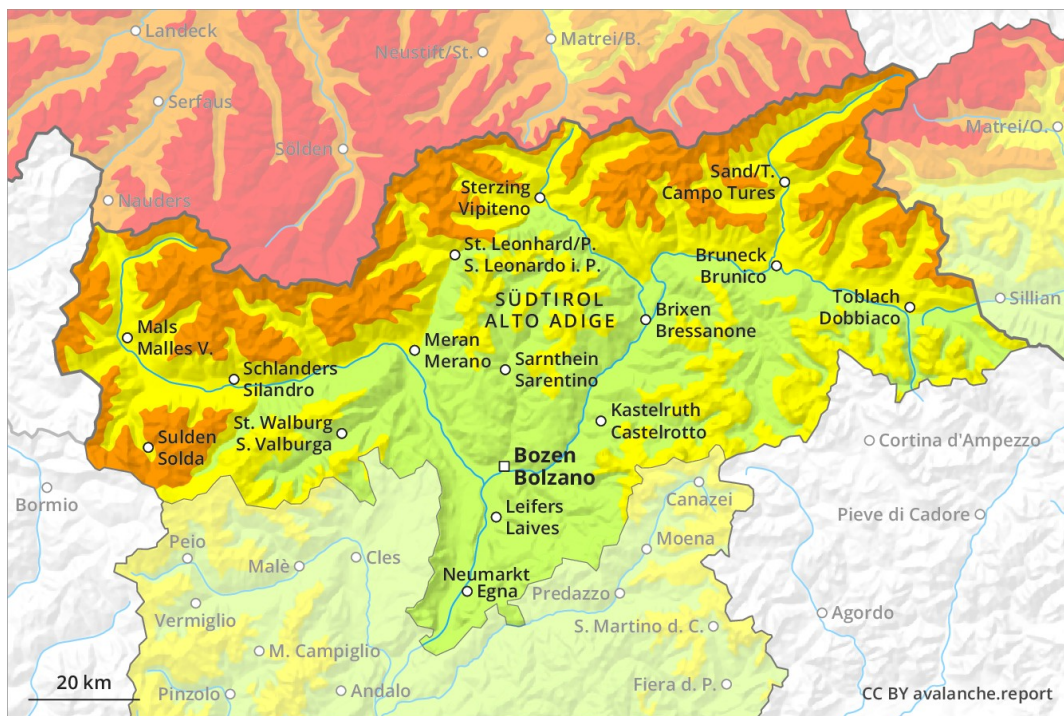
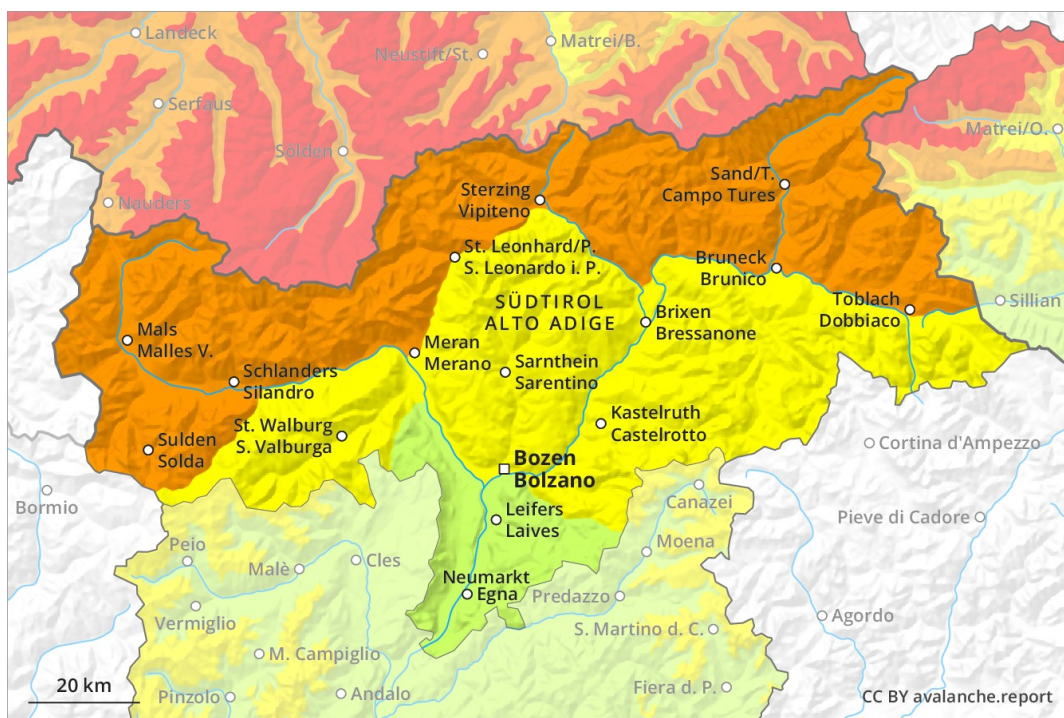


AM

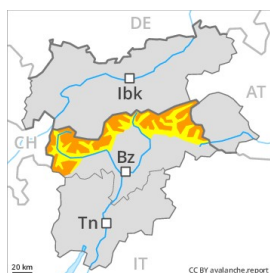


PM

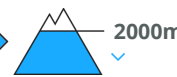


Danger Level 3 - Considerable

AM:



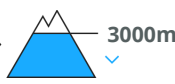
Tendency: **Constant avalanche danger** →
 on Sunday 17 03 2019



PM:



Tendency: **Constant avalanche danger** →
 on Sunday 17 03 2019



A dangerous avalanche situation will prevail. Restraint is advisable on this first sunny day after a long period of poor weather.

Wind slabs represent the main danger. The fresh wind slabs must be evaluated with care and prudence in all aspects above approximately 1800 m. Avalanches can in many places be released by a single winter sport participant and reach large size. Caution is to be exercised in particular in gullies and bowls, and behind abrupt changes in the terrain. Wet avalanches as the day progresses. Gradual increase in danger of moist and wet avalanches as a consequence of warming during the day and solar radiation. Backcountry touring calls for extensive experience and restraint.

Snowpack

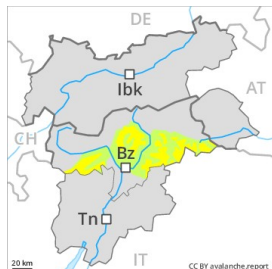
Over a wide area 30 to 40 cm of snow, and up to 50 cm in some localities, fell. The strong wind has transported a lot of snow. The fresh wind slabs are poorly bonded with the old snowpack in all aspects. They are in many cases extensive and prone to triggering. The old snowpack will be moist at low and intermediate altitudes.

Tendency

As the day progresses as a consequence of warming during the day and solar radiation there will be a rapid increase in the danger of moist avalanches.

Danger Level 2 - Moderate

AM:



Tendency: Constant avalanche danger →
 on Sunday 17 03 2019

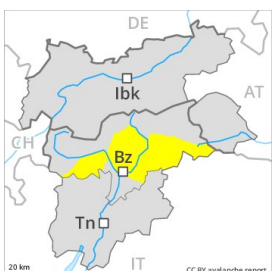


Wind-drifted
 snow



Treeline

PM:



Tendency: Constant avalanche danger →
 on Sunday 17 03 2019



Wet snow



3000m



Wind-drifted
 snow



Treeline

Fresh wind slabs require caution.

The wind slabs of the last two days are clearly recognisable to the trained eye. These are mostly shallow but in some cases prone to triggering. The avalanche prone locations are to be found in particular in places that are protected from the wind. In regions neighbouring those that are subject to danger level 3 (considerable) and at elevated altitudes avalanche prone locations are a little more prevalent and the danger is slightly greater. Slight increase in danger of moist and wet avalanches as a consequence of warming during the day.

Snowpack

The wind has transported only a little snow. Isolated avalanche prone weak layers exist in the bottom section of the old snowpack on shady slopes, in particular in areas close to the tree line in little used backcountry terrain. The snowpack will be moist at low and intermediate altitudes.

Tendency

As the day progresses as a consequence of warming during the day and solar radiation there will be an increase in the danger of moist avalanches.

Danger Level 1 - Low



Tendency: Constant avalanche danger →
on Sunday 17 03 2019



Wind-drifted
snow



A generally favourable avalanche situation will prevail.

Avalanches can in isolated cases be released by large loads, but they will be small in most cases. This applies especially on steep shady slopes above approximately 2200 m. In particular in gullies and bowls, and behind abrupt changes in the terrain the wind slabs have increased in size moderately.

Snowpack

The fresh wind slabs are mostly small but in some cases prone to triggering. The old snowpack will be subject to considerable local variations. Only a little snow is lying. Faceted weak layers exist in the bottom section of the old snowpack.

Tendency

Low, level 1.