

Avalanche Forecast

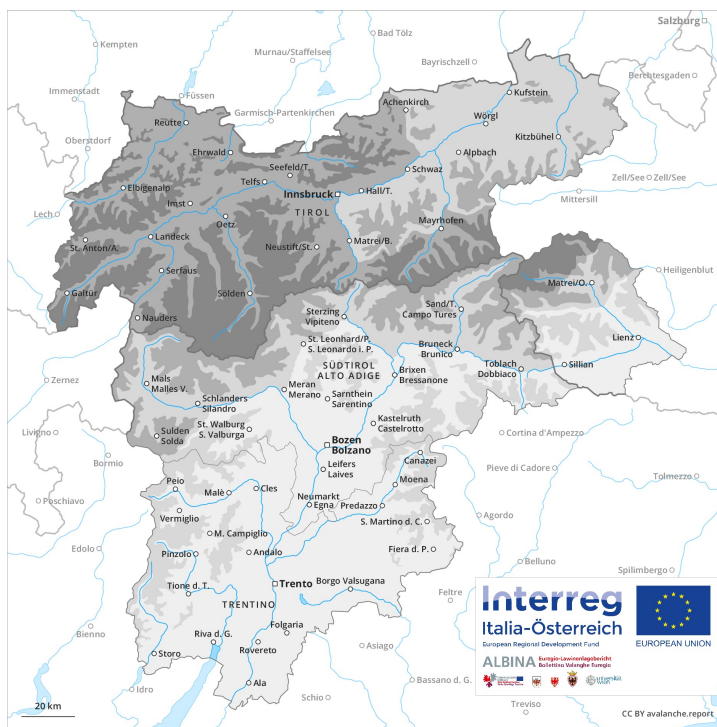
Saturday 16 03 2019

Published 15 03 2019, 17:00

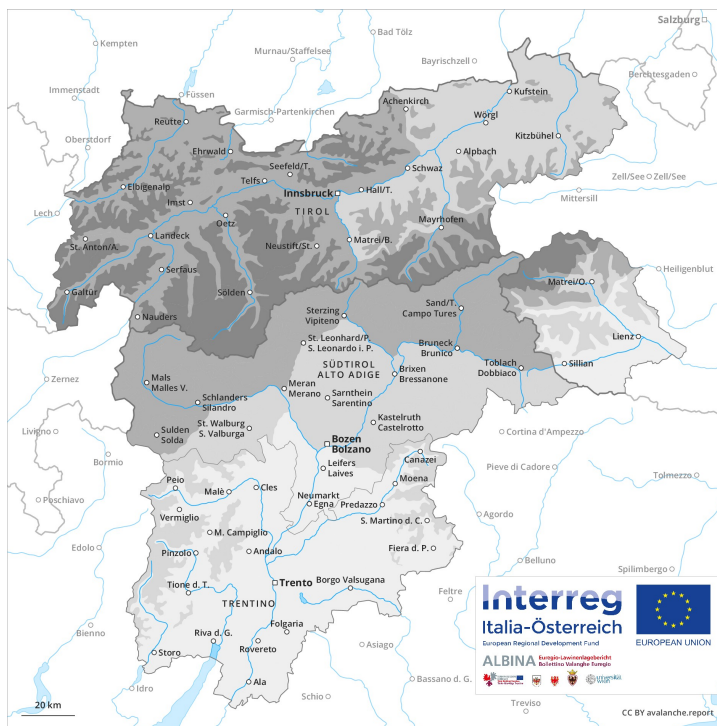


Avalanche.report

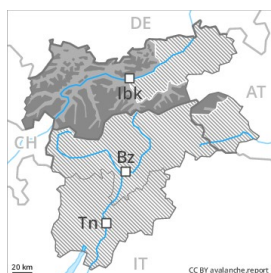
AM



PM



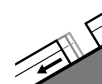
Danger Level 4 - High



Tendency: Decreasing avalanche danger
 on Sunday 17 03 2019



Wind-drifted
 snow



Gliding snow



A very precarious avalanche situation will persist. The fresh snow and wind slabs of yesterday remain prone to triggering. Increase in danger of wet and gliding avalanches as a consequence of warming during the day and solar radiation.

Restraint is advisable on this first sunny day. Much of the fresh and wind-drifted snow of Friday must be evaluated with care and prudence in all aspects above approximately 2200 m. Even single winter sport participants can release avalanches in many places, including large ones. In addition individual medium-sized to large natural dry avalanches are possible. As a consequence of warming during the day and the solar radiation, the likelihood of dry slab avalanches being released will increase a little. At elevated altitudes the prevalence and size of the avalanche prone locations will increase.
 Wet and gliding avalanches: A danger of gliding avalanches exists. This applies in particular on steep sunny slopes below approximately 2600 m as well as in all aspects below approximately 2200 m. In particular here individual occasionally large gliding avalanches are possible. In addition as the day progresses numerous small and medium-sized moist loose snow avalanches are to be expected. This applies on extremely steep sunny slopes in all altitude zones.

Snowpack

Danger patterns

dp 6: cold, loose snow and wind

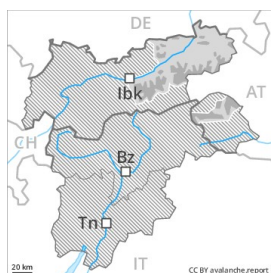
dp 2: gliding snow

Over a wide area 40 to 80 cm of snow, and even more in some localities, has fallen in the last two days above approximately 2000 m. The wind was strong to storm force. Fresh snow and wind slabs are lying mostly on the soft surface of an old snowpack, in particular above approximately 2200 m. The various wind slabs have bonded poorly with each other and the old snowpack. The old snowpack will be stable over a wide area. The snowpack will be wet all the way through at low and intermediate altitudes. The snowpack will become moist on sunny slopes.

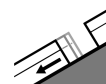
Tendency

Considerable avalanche danger will prevail.

Danger Level 3 - Considerable



Tendency: Constant avalanche danger →
 on Sunday 17 03 2019



The fresh snow and wind slabs of yesterday remain prone to triggering above approximately 2200 m. Increase in danger of wet and gliding avalanches as a consequence of warming during the day and solar radiation.

Restraint is advisable on this first sunny day. Much of the fresh and wind-drifted snow of Friday must be evaluated with care and prudence in all aspects above approximately 2200 m. Even single winter sport participants can release avalanches in many places, including dangerously large ones. Caution is to be exercised in particular at transitions from a shallow to a deep snowpack, when entering gullies and bowls for example as well as in places that are protected from the wind. In addition further individual medium-sized to large natural dry avalanches are possible. As a consequence of warming during the day and the solar radiation, the likelihood of slab avalanches being released will increase a little.
 Wet and gliding avalanches:
 A danger of gliding avalanches exists. This applies in particular on steep sunny slopes below approximately 2600 m as well as in all aspects below approximately 2200 m. Individual gliding avalanches are possible, even large ones in isolated cases. In particular, however, as the day progresses numerous small and medium-sized moist loose snow avalanches are to be expected. This applies on extremely steep sunny slopes in all altitude zones.

Snowpack

Danger patterns

dp 6: cold, loose snow and wind

dp 2: gliding snow

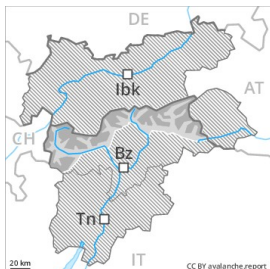
30 to 60 cm of snow, and even more in some localities, has fallen in the last two days above approximately 2000 m. The wind was strong to storm force. Fresh snow and wind slabs are lying mostly on the soft surface of an old snowpack, in particular above approximately 2200 m. Wind slabs are bonding only slowly with the old snowpack. The old snowpack will be stable over a wide area. The snowpack will be wet all the way through at low and intermediate altitudes. The snowpack will become moist on sunny slopes.

Tendency

Considerable avalanche danger will prevail.

Danger Level 3 - Considerable

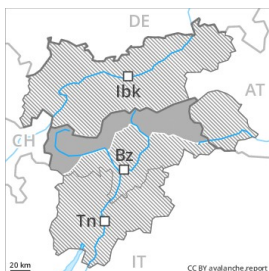
AM:



Tendency: Constant avalanche danger →
 on Sunday 17 03 2019



PM:



Tendency: Constant avalanche danger →
 on Sunday 17 03 2019



A dangerous avalanche situation will prevail. Restraint is advisable on this first sunny day after a long period of poor weather.

Wind slabs represent the main danger. The fresh wind slabs must be evaluated with care and prudence in all aspects above approximately 1800 m. Avalanches can in many places be released by a single winter sport participant and reach large size. Caution is to be exercised in particular in gullies and bowls, and behind abrupt changes in the terrain. Wet avalanches as the day progresses. Gradual increase in danger of moist and wet avalanches as a consequence of warming during the day and solar radiation. Backcountry touring calls for extensive experience and restraint.

Snowpack

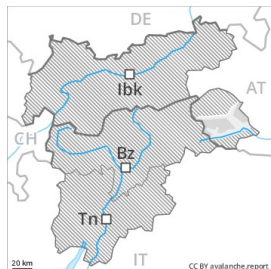
Over a wide area 30 to 40 cm of snow, and up to 50 cm in some localities, fell. The strong wind has transported a lot of snow. The fresh wind slabs are poorly bonded with the old snowpack in all aspects. They are in many cases extensive and prone to triggering. The old snowpack will be moist at low and intermediate altitudes.

Tendency

As the day progresses as a consequence of warming during the day and solar radiation there will be a rapid increase in the danger of moist avalanches.



Danger Level 2 - Moderate



Tendency: Constant avalanche danger →
on Sunday 17 03 2019



Wind-drifted
snow



Treeline

Fresh wind slabs represent the main danger.

As a consequence of fresh snow and a sometimes strong wind from westerly directions, avalanche prone wind slabs formed in the last few days. The fresh wind slabs can in some places be released, even by a single winter sport participant and reach medium size. The avalanche prone locations are to be found on northwest to north to east facing aspects at high altitudes and in high Alpine regions, especially in gullies and bowls, and behind abrupt changes in the terrain. As a consequence of warming during the day and the solar radiation, the likelihood of slab avalanches being released will increase a little. In addition as the day progresses numerous mostly small moist loose snow avalanches are to be expected. This applies on extremely steep sunny slopes in all altitude zones.

Snowpack

Danger patterns

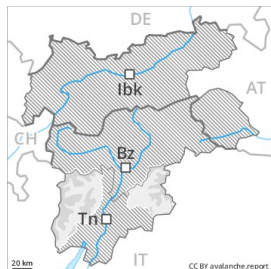
dp 6: cold, loose snow and wind

10 to 20 cm of snow, and even more in some localities, has fallen in the last two days above approximately 2000 m. The wind was strong in some cases. Wind slabs are lying on soft layers in particular on steep shady slopes above the tree line. The old snowpack will be quite stable. The snowpack will be wet all the way through at low altitude. The snowpack will become increasingly moist.

Tendency

Moderate avalanche danger will prevail.

Danger Level 2 - Moderate



Tendency: Constant avalanche danger →
 on Sunday 17 03 2019



Wind-drifted
 snow



Wind-drifted
 snow



A mostly favourable avalanche situation will prevail. Wind slabs require caution.

In particular shady slopes where weaknesses exist in the old snowpack are unfavourable. In addition the mostly small wind slabs of last week in particular adjacent to ridgelines and at elevated altitudes are prone to triggering in some cases still. These can be released, in particular by large loads. As a consequence of warming individual gliding avalanches and moist snow slides are possible in the afternoon, but they will be mostly small.

Snowpack

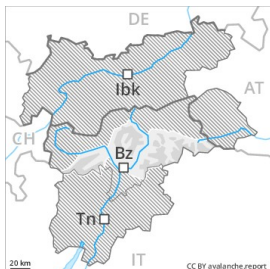
Outgoing longwave radiation during the night will be quite good. The surface of the snowpack will freeze to form a strong crust and will soften during the day. The fresh and somewhat older wind slabs have formed in all aspects. The fresh snow and wind slabs of last week have bonded quite well with the old snowpack in particular on sunny slopes. Faceted weak layers exist deeper in the old snowpack especially in shady places that are protected from the wind.

Tendency

The avalanche danger will persist.

Danger Level 2 - Moderate

AM:



Tendency: Constant avalanche danger →
 on Sunday 17 03 2019

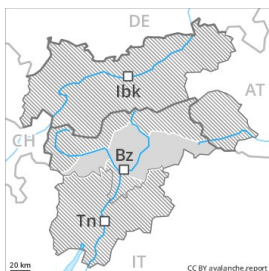


Wind-drifted
 snow



Treeline

PM:



Tendency: Constant avalanche danger →
 on Sunday 17 03 2019



Wet snow



3000m



Wind-drifted
 snow



Treeline

Fresh wind slabs require caution.

The wind slabs of the last two days are clearly recognisable to the trained eye. These are mostly shallow but in some cases prone to triggering. The avalanche prone locations are to be found in particular in places that are protected from the wind. In regions neighbouring those that are subject to danger level 3 (considerable) and at elevated altitudes avalanche prone locations are a little more prevalent and the danger is slightly greater. Slight increase in danger of moist and wet avalanches as a consequence of warming during the day.

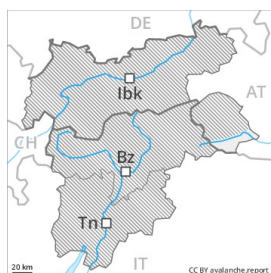
Snowpack

The wind has transported only a little snow. Isolated avalanche prone weak layers exist in the bottom section of the old snowpack on shady slopes, in particular in areas close to the tree line in little used backcountry terrain. The snowpack will be moist at low and intermediate altitudes.

Tendency

As the day progresses as a consequence of warming during the day and solar radiation there will be an increase in the danger of moist avalanches.

Danger Level 1 - Low



Tendency: Constant avalanche danger →
on Sunday 17 03 2019



Wind-drifted
snow



A quite favourable avalanche situation will be encountered over a wide area. Fresh wind slabs represent the main danger.

As a consequence of a moderate to strong wind from westerly directions, sometimes avalanche prone wind slabs formed in the last few days especially adjacent to ridgelines and in pass areas. The fresh wind slabs can in isolated cases be released by a single winter sport participant, but they will be small in most cases. The avalanche prone locations are to be found on northwest to north to northeast facing aspects above approximately 2200 m. These places are rare and are clearly recognisable to the trained eye. As a consequence of warming during the day and the solar radiation, the likelihood of moist loose snow avalanches being released will increase a little on extremely steep sunny slopes.

Snowpack

Danger patterns

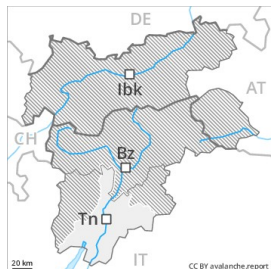
dp 6: cold, loose snow and wind

Up to 10 cm of snow. fell above approximately 2000 m. The wind was moderate to strong. Fresh wind slabs are mostly only small. The old snowpack will be quite stable. Individual weak layers exist in the bottom section of the old snowpack on shady slopes, in particular in areas close to the tree line in little used backcountry terrain. The snowpack will become moist on sunny slopes.

Tendency

The conditions are quite favourable.

Danger Level 1 - Low



Tendency: Constant avalanche danger →
on Sunday 17 03 2019



Favourable
situation



Treeline

In all altitude zones only a little snow is lying. Below approximately 1800 m no snow is lying on south facing slopes. At elevated altitudes a mostly favourable avalanche situation will prevail.

The mostly small wind slabs can be released, especially by large additional loads, on steep shady slopes. The avalanche prone locations are to be found in high Alpine regions and adjacent to ridgelines and in gullies and bowls above approximately 2000 m. In the afternoon, individual moist snow slides are possible.

Snowpack

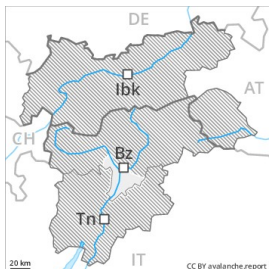
The old snowpack will be subject to considerable local variations. Only a little snow is lying on north and northeast facing slopes. Adjacent to ridgelines and in gullies and bowls mostly small wind slabs formed. On south facing slopes no snow is lying in all altitude zones.

Tendency

The avalanche danger will persist.



Danger Level 1 - Low



Tendency: Constant avalanche danger →
on Sunday 17 03 2019



Wind-drifted
snow



A generally favourable avalanche situation will prevail.

Avalanches can in isolated cases be released by large loads, but they will be small in most cases. This applies especially on steep shady slopes above approximately 2200 m. In particular in gullies and bowls, and behind abrupt changes in the terrain the wind slabs have increased in size moderately.

Snowpack

The fresh wind slabs are mostly small but in some cases prone to triggering. The old snowpack will be subject to considerable local variations. Only a little snow is lying. Faceted weak layers exist in the bottom section of the old snowpack.

Tendency

Low, level 1.