

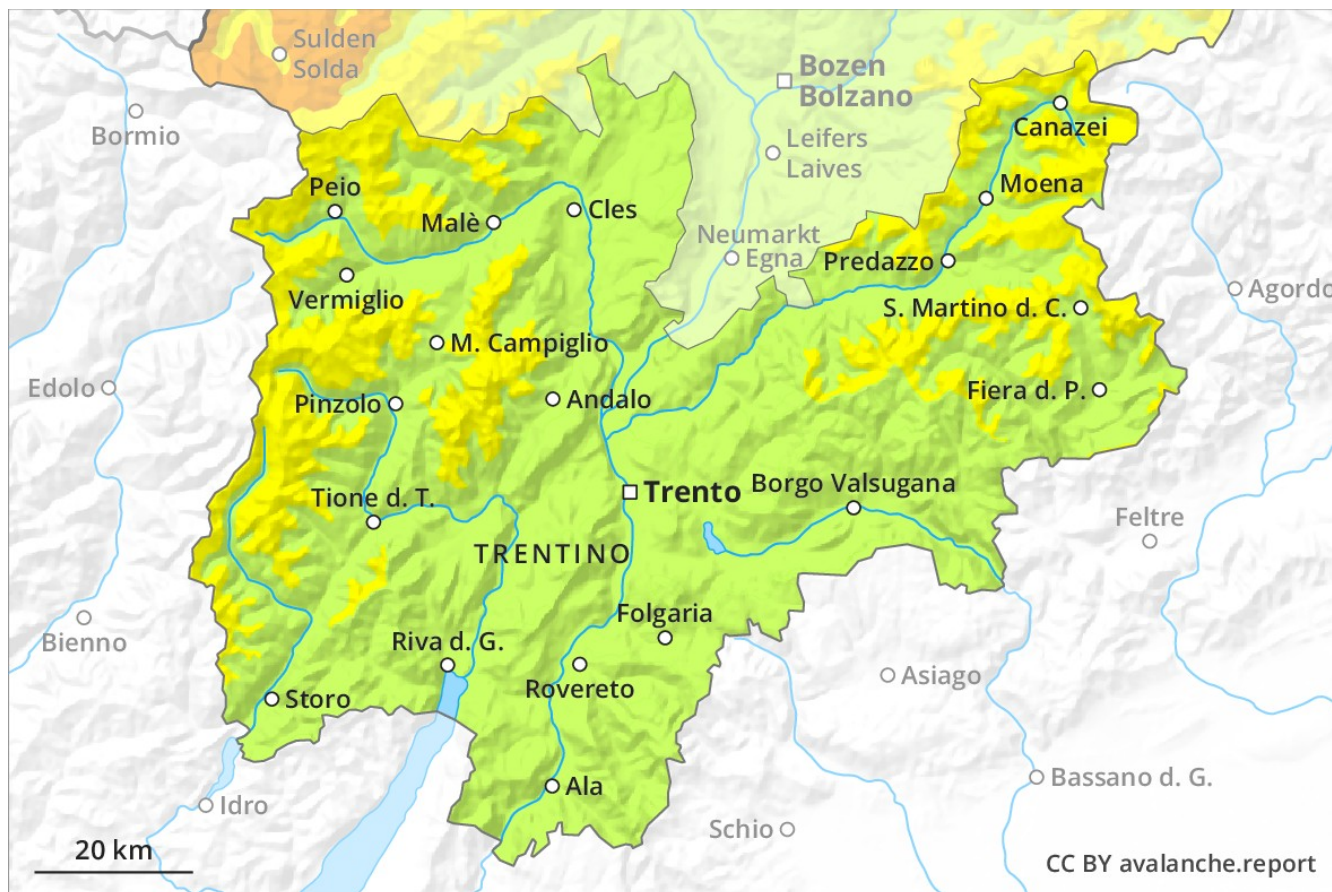
Avalanche Forecast

Sunday 17 03 2019

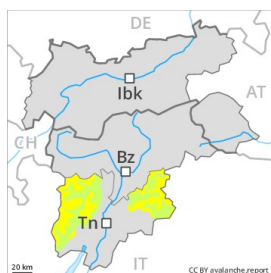
Published 17 03 2019, 08:55



Avalanche.report



Danger Level 2 - Moderate



Tendency: Increasing avalanche danger
on Monday 18 03 2019



Wind-drifted
snow



Treeline



Wind-drifted
snow



A mostly favourable avalanche situation will prevail. Wind slabs require caution. As a consequence of warming a moderate danger of wet and gliding avalanches will be encountered in some regions.

In particular shady slopes where weaknesses exist in the old snowpack are unfavourable. In addition the mostly small wind slabs of last week in particular adjacent to ridgelines and at elevated altitudes are prone to triggering in some cases still. These can be released, in particular by large loads. As a consequence of warming individual gliding avalanches and moist snow slides are possible in the afternoon, but they will be mostly small.

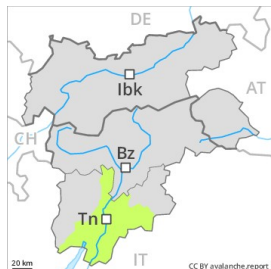
Snowpack

The fresh snow and wind slabs of last week have bonded quite well with the old snowpack in particular on sunny slopes. Faceted weak layers exist deeper in the old snowpack especially in shady places that are protected from the wind. Outgoing longwave radiation during the night will be quite good. The surface of the snowpack will freeze to form a strong crust and will soften during the day. As a consequence of warming and solar radiation a moderate danger of wet and gliding avalanches will be encountered in some regions.

Tendency

Increase in avalanche danger as a consequence of fresh snow and wind. The avalanche danger will increase during the day.

Danger Level 1 - Low



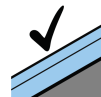
Tendency: Increasing avalanche danger
on Monday 18 03 2019



Wind-drifted
snow



Treeline



Favourable
situation



In all altitude zones only a little snow is lying. Below approximately 1800 m no snow is lying on south facing slopes. At elevated altitudes a mostly favourable avalanche situation will prevail.

The mostly small wind slabs can be released, especially by large additional loads, on steep shady slopes. The avalanche prone locations are to be found in high Alpine regions and adjacent to ridgelines and in gullies and bowls above approximately 2000 m. In the afternoon, individual moist snow slides are possible.

Snowpack

The old snowpack will be subject to considerable local variations. Only a little snow is lying on north and northeast facing slopes. Adjacent to ridgelines and in gullies and bowls mostly small wind slabs formed. On south facing slopes no snow is lying in all altitude zones.

Tendency

The avalanche danger will increase during the day.