

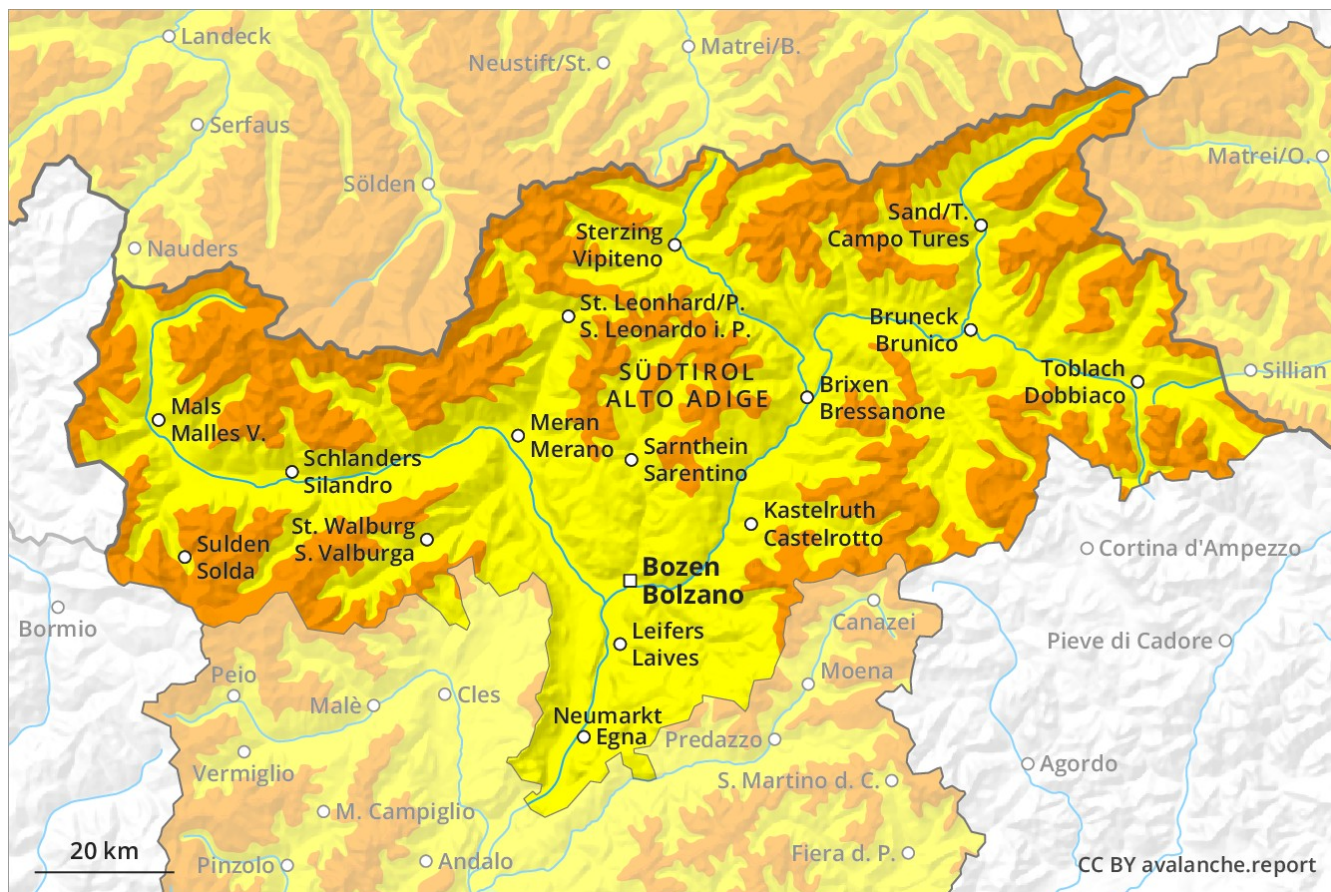
# Avalanche Forecast

## Monday 18 03 2019

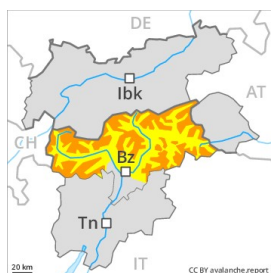
Published 17 03 2019, 17:43



Avalanche.report



## Danger Level 3 - Considerable



**Tendency: Constant avalanche danger** →

on Tuesday 19 03 2019



Wind-drifted  
snow



New snow



As a consequence of fresh snow a considerable avalanche danger will still be encountered.

The fresh snow is bonding poorly with the old snowpack in particular on steep shady slopes. The sometimes fresh snow-covered wind slabs can be released easily. or in isolated cases naturally, in all aspects. They must be evaluated with care and prudence. Avalanches can in many places be released by a single winter sport participant and reach medium size. Caution is to be exercised in particular in gullies and bowls, and behind abrupt changes in the terrain. The conditions are treacherous for ski touring, freeriding and snowshoe hiking. The current avalanche situation calls for experience in the assessment of avalanche danger and restraint.

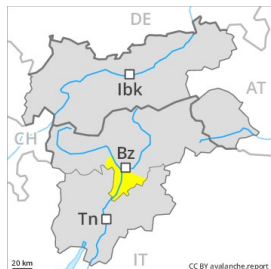
### Snowpack

Over a wide area 20 cm of snow, and up to 40 cm in some localities, will fall above approximately 1000 m. The southwesterly wind will transport the fresh snow. The somewhat older wind slabs will be covered with fresh snow and therefore difficult to recognise. They are in many cases extensive and in some cases prone to triggering.

### Tendency

Gradual decrease in danger of dry avalanches.

## Danger Level 2 - Moderate



**Tendency: Constant avalanche danger** →  
on Tuesday 19 03 2019



Wind-drifted  
snow



Treeline



New snow



Treeline

### Fresh wind slabs require caution.

The wind slabs of the last two days are clearly recognisable to the trained eye. These are mostly shallow but in some cases prone to triggering. The avalanche prone locations are to be found in particular in places that are protected from the wind. In regions exposed to heavier precipitation avalanche prone locations are more prevalent.

### Snowpack

The wind has transported only a little snow. Isolated avalanche prone weak layers exist in the bottom section of the old snowpack on shady slopes, in particular in areas close to the tree line in little used backcountry terrain. The snowpack will be moist at low and intermediate altitudes.

### Tendency

Moderate, level 2.