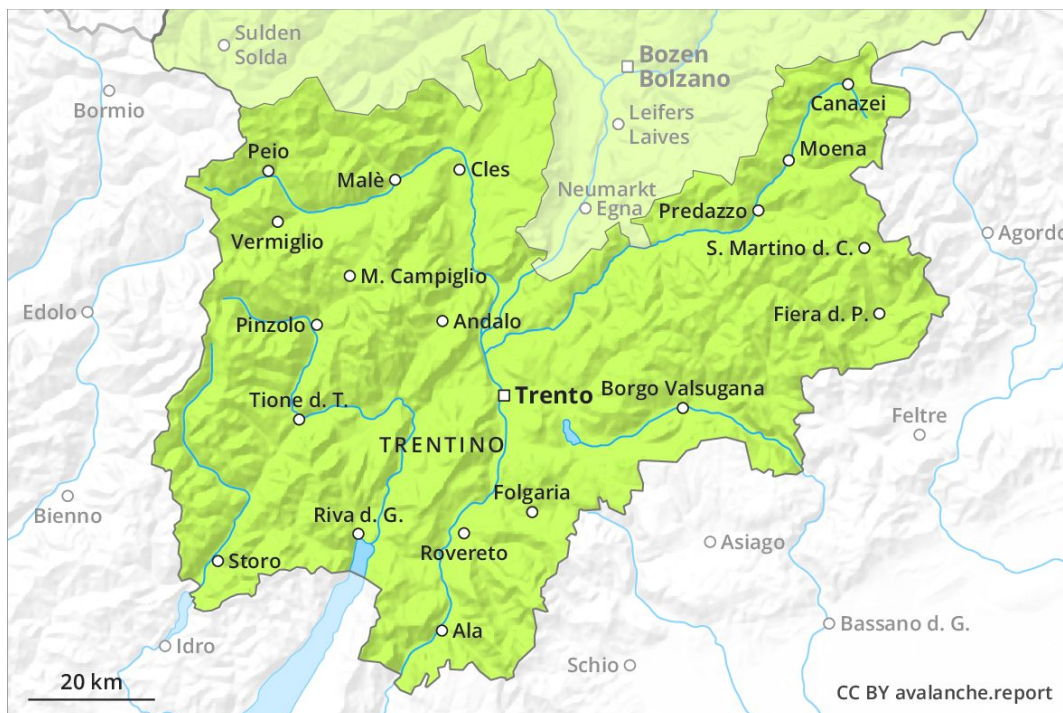
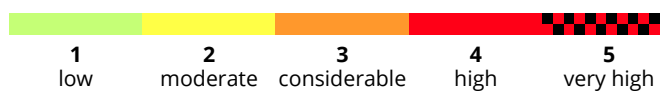
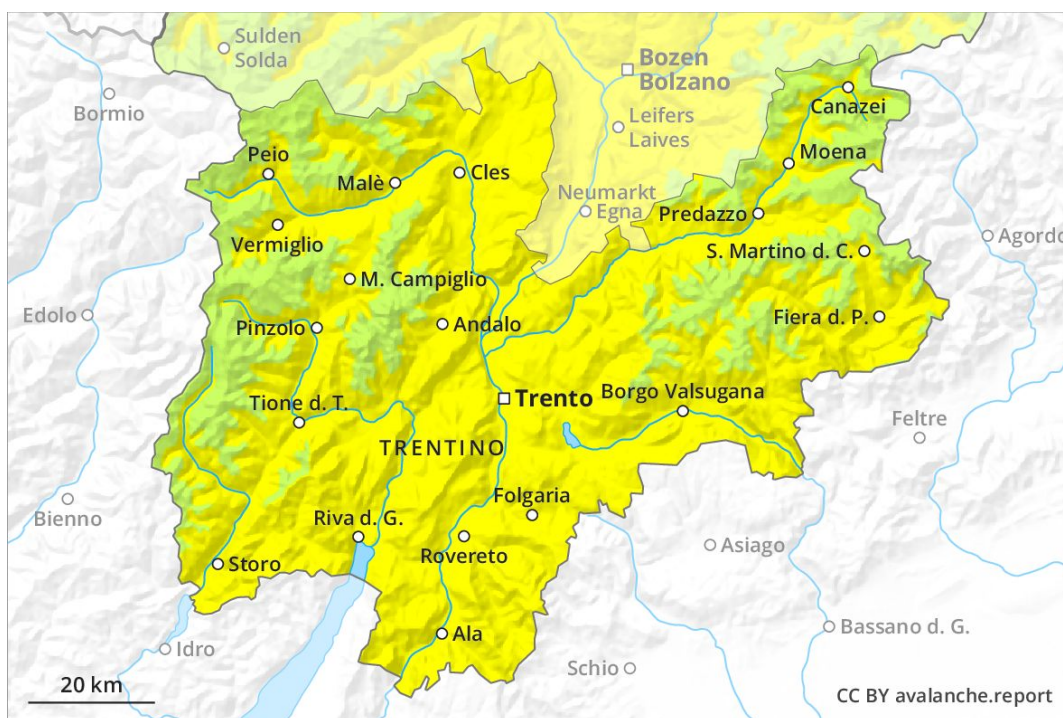


AM



PM



Danger Level Danger Level 2 - Moderate

AM:



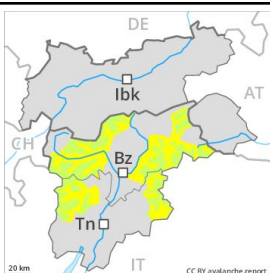
Tendency: Constant avalanche danger →
 on Tuesday 26 03 2019



Wind-drifted
 snow



PM:



Tendency: Constant avalanche danger →
 on Tuesday 26 03 2019



Wet snow



The backcountry and freeriding conditions in the morning, after a clear night, are favourable. Increase in danger of wet snow slides as a consequence of warming during the day and solar radiation.

The avalanche conditions are spring-like. In the late morning a low avalanche danger will be encountered over a wide area. Fresh wind slabs can be released in isolated cases on very steep shady slopes above approximately 3000 m, especially adjacent to ridgelines and in pass areas. The avalanche prone locations are easy to recognise. Restraint should be exercised because avalanches can sweep people along and give rise to falls. In steep terrain there is a danger of falling on the hard snow surface.

Midday and afternoon: As a consequence of warming and solar radiation a moderate danger of wet snow slides will be encountered in some regions. The avalanche prone locations are to be found in all aspects at low altitude and on very steep sunny slopes below approximately 2400 m.

Snowpack

Danger patterns

dp 10: springtime scenario

dp 2: gliding snow

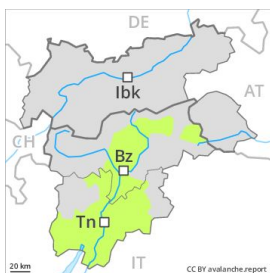
The surface of the snowpack will freeze to form a strong crust and will soften during the day. This applies on sunny slopes below approximately 2400 m as well as in all aspects at low altitude. Fresh wind slabs are lying on soft layers on northwest to north to northeast facing aspects above approximately 3000 m. They are in individual cases still prone to triggering. The old snowpack will be stable over a wide area.

Tendency

The avalanche conditions are favourable.

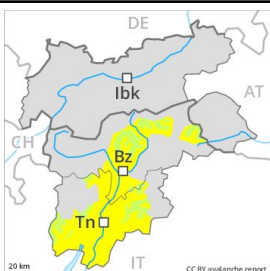
Danger Level Danger Level 2 - Moderate

AM:



Tendency: Constant avalanche danger →
 on Tuesday 26 03 2019

PM:



Tendency: Constant avalanche danger →
 on Tuesday 26 03 2019



Wet snow



The backcountry and freeriding conditions in the morning, after a clear night, are favourable. Increase in danger of moist and wet snow slides as a consequence of warming during the day and solar radiation.

The avalanche conditions are spring-like. In the late morning a low avalanche danger will be encountered over a wide area. In steep terrain there is a danger of falling on the hard snow surface.

Midday and afternoon: As a consequence of warming and solar radiation a moderate danger of moist and wet snow slides will be encountered in some regions. The avalanche prone locations are to be found in all aspects at low altitude and on very steep sunny slopes below approximately 2400 m.

Snowpack

Danger patterns

dp 10: springtime scenario

The surface of the snowpack will freeze to form a strong crust and will soften during the day. This applies on sunny slopes below approximately 2400 m as well as in all aspects at low altitude. The old snowpack will be stable over a wide area.

Tendency

The avalanche conditions are favourable.