

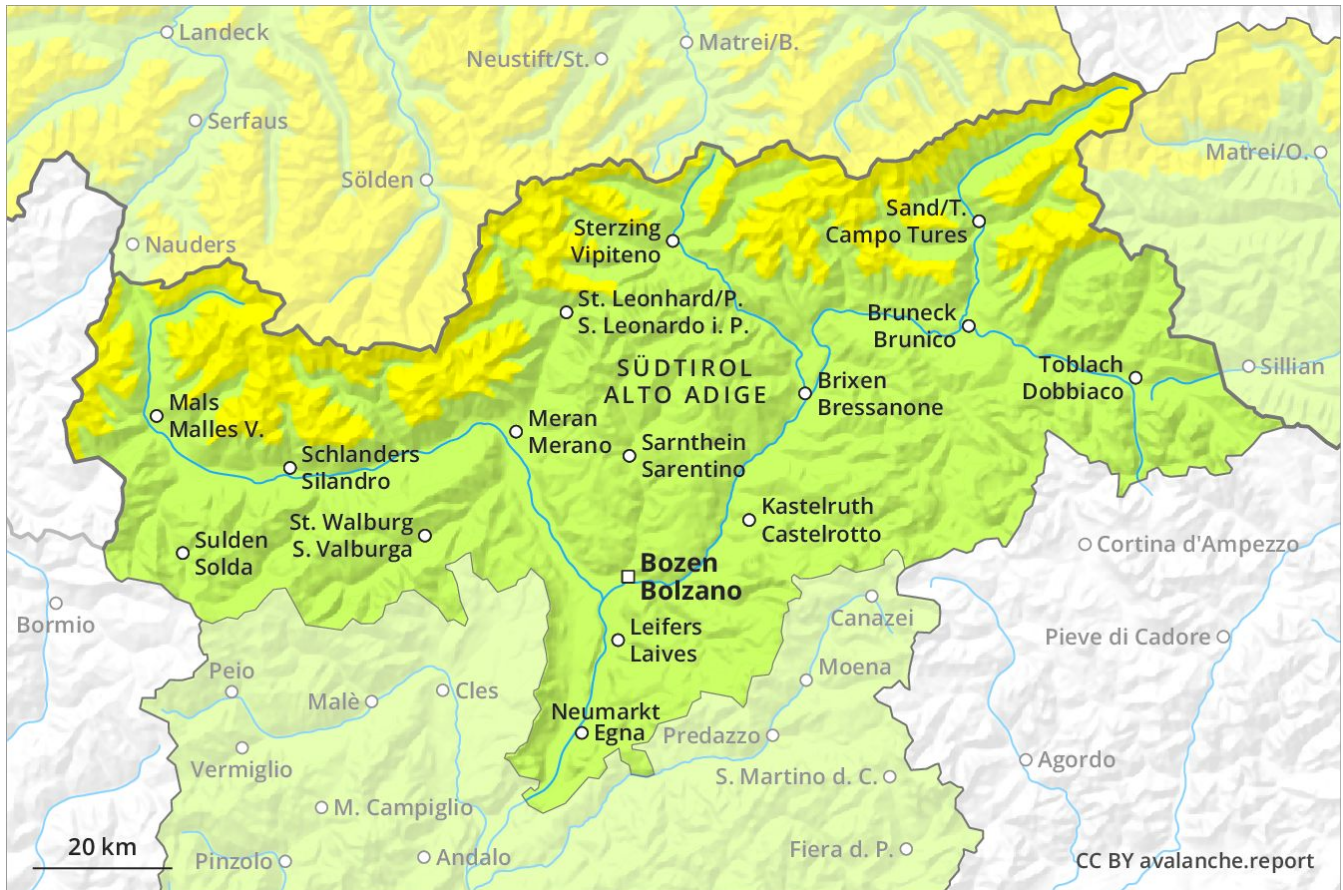
Avalanche Forecast

Tuesday 26 03 2019

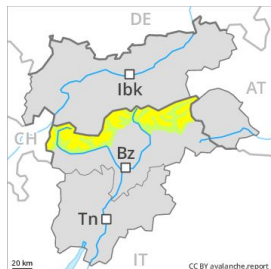
Published 25 03 2019, 17:00



Avalanche.report



Danger Level Danger Level 2 - Moderate



Tendency: Constant avalanche danger →
on Wednesday 27 03 2019



Wind-drifted
snow



Fresh wind slabs require caution.

Fresh wind slabs can be released in isolated cases above approximately 2000 m, especially adjacent to ridgelines and in pass areas. The avalanche prone locations are easy to recognise. Restraint should be exercised because avalanches can sweep people along and give rise to falls. In steep terrain there is a danger of falling on the hard snow surface. As a consequence of solar radiation individual dry and moist avalanches are possible as the day progresses, but they will be mostly small.

Snowpack

Danger patterns

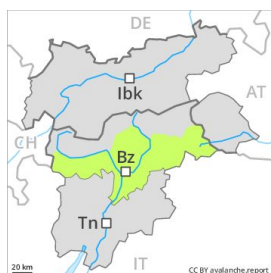
dp 6: cold, loose snow and wind

5 to 10 cm of snow. will fall. The violent wind will transport the fresh and old snow. At high altitudes and in high Alpine regions the prevalence and size of the avalanche prone locations will increase. Fresh wind slabs are clearly recognisable. Over a wide area wind slabs are lying on a hard crust. The old snowpack will be generally stable.

Tendency

The backcountry touring conditions are quite favourable.

Danger Level Danger Level 1 - Low



Tendency: Constant avalanche danger →

on Wednesday 27 03 2019



Wind-drifted
snow



Persistent
weak layer



The northerly wind will transport only a little snow. The conditions are spring-like.

Fresh wind slabs can be released in isolated cases in all aspects above approximately 2200 m, especially adjacent to ridgelines and in pass areas. The avalanche prone locations are easy to recognise. Restraint should be exercised because avalanches can sweep people along and give rise to falls. In steep terrain there is a danger of falling on the hard snow surface. As a consequence of solar radiation a low danger of wet snow slides will be encountered in some regions. The avalanche prone locations are to be found at low altitude and on very steep sunny slopes below approximately 2400 m.

Snowpack

Danger patterns

dp 10: springtime scenario

The surface of the snowpack will freeze to form a strong crust and will hardly soften at all. This applies on steep sunny slopes below approximately 2800 m. Fresh wind slabs are lying on a crust in particular on steep sunny slopes. The old snowpack will be in most cases stable.

Tendency

The avalanche conditions are favourable.