

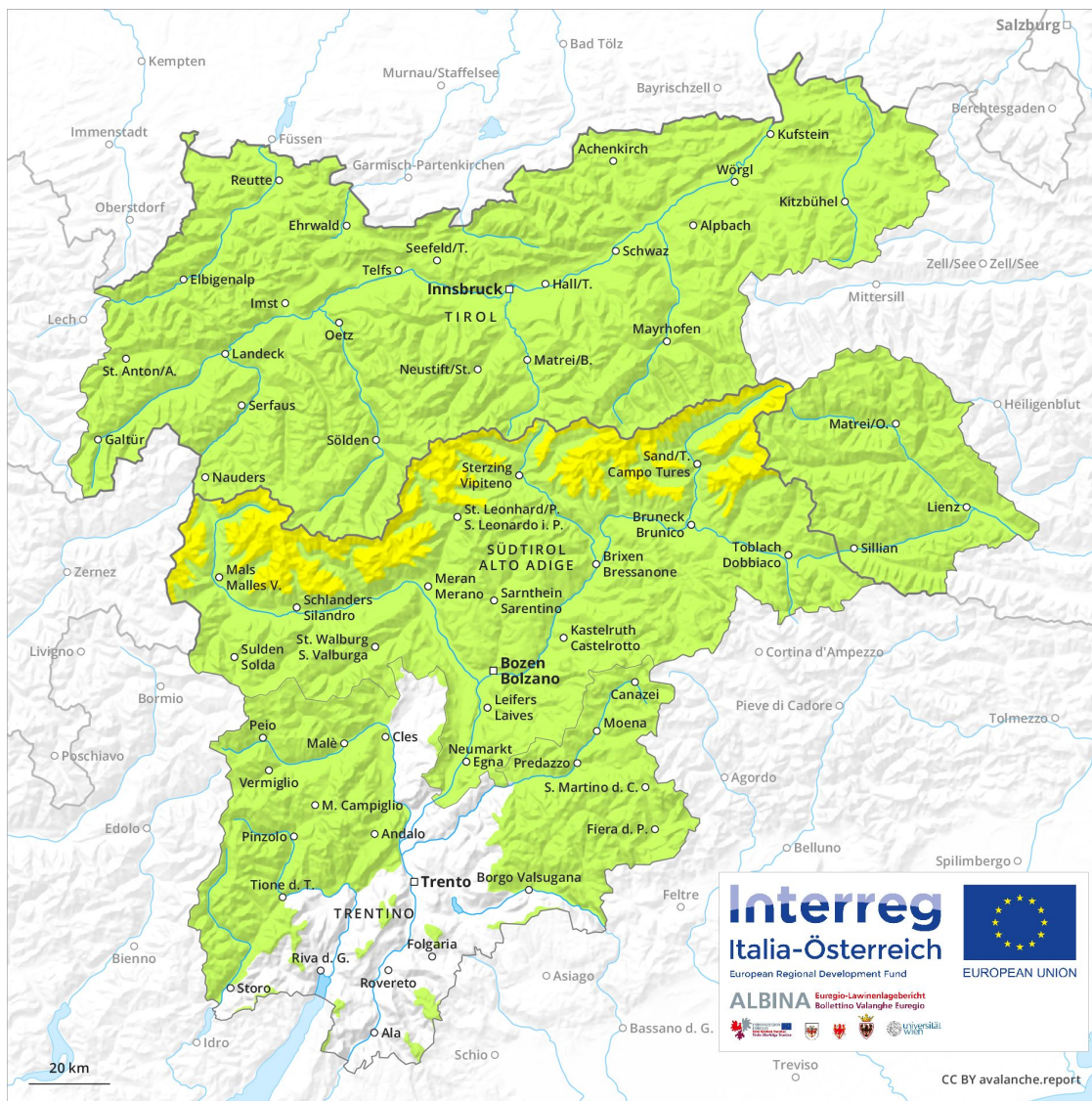
Avalanche Forecast

Friday 29 03 2019

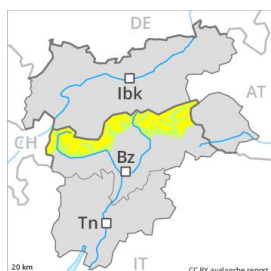
Published 28 03 2019, 17:00



Avalanche.report



Danger Level 2 - Moderate



Tendency: Decreasing avalanche danger
on Saturday 30 03 2019



Wind-drifted
snow



Persistent
weak layer



Wind slabs at high altitudes and in high Alpine regions.

The wind slabs of the last few days can still be released in some cases, in particular adjacent to ridgelines and in gullies and bowls. The prevalence of avalanche prone locations will increase with altitude. These avalanche prone locations are rather rare and are easy to recognise. Avalanches can additionally in very isolated cases be released in deeper layers in particular in areas where the snow cover is rather shallow. These avalanche prone locations are to be found in particular in extremely steep terrain above approximately 2200 m. As a consequence of solar radiation individual dry and moist avalanches are possible as the day progresses, but they can reach medium size.

Snowpack

The sometimes storm force wind has transported the fresh and old snow. Fresh wind slabs are clearly recognisable. Over a wide area wind slabs are lying on a hard crust. The old snowpack will be generally stable. Weak layers in the lower part of the snowpack can still be released in very isolated cases especially on steep, little used shady slopes. The surface of the snowpack will freeze to form a strong crust and will soften during the day.

Tendency

The avalanche conditions are favourable.

Danger Level 1 - Low



Tendency: Constant avalanche danger →
on Saturday 30 03 2019



Wind-drifted
snow



Treeline



Persistent
weak layer



Treeline

The violent wind has transported only a little snow.

Currently there are favourable conditions over a wide area. The fresh wind slabs can as before be released by a single winter sport participant. Restraint should be exercised because avalanches can sweep people along and give rise to falls. Avalanche prone weak layers exist deep in the old snowpack in particular on shady slopes. Avalanches can be released in the weakly bonded old snow, mostly by large additional loads in isolated cases. The avalanche prone locations are to be found in particular on steep northwest, north and northeast facing slopes above approximately 2000 m. At elevated altitudes avalanche prone locations are more prevalent.

Snowpack

The surface of the snowpack will freeze to form a strong crust. The mostly shallow wind slabs are to be evaluated with care and prudence in particular in extremely steep terrain.

Tendency

The backcountry and freeriding conditions are generally favourable. Fresh wind slabs require caution.

Danger Level 1 - Low



Tendency: Constant avalanche danger →
on Saturday 30 03 2019

A generally favourable avalanche situation will prevail.

The small wind slabs of the last few days are now only very rarely prone to triggering. They can be released in isolated cases, but mostly only by large additional loads, on very steep shady slopes above approximately 2400 m. Avalanche prone locations are to be found in particular adjacent to ridgelines and in pass areas, in isolated cases also at a distance from ridgelines in gullies and bowls. The avalanche prone locations are clearly recognisable to the trained eye. Restraint should be exercised because avalanches can sweep people along and give rise to falls.

In the afternoon as a consequence of warming during the day and solar radiation there will be only a slight increase in the danger of moist and wet snow slides. This applies on extremely steep sunny slopes in particular below approximately 2400 m.

Snowpack

Danger patterns

dp 6: cold, loose snow and wind

The snowpack will be stable over a wide area. The wind slabs of the last few days have bonded well with the old snowpack in all aspects. The surface of the snowpack has frozen to form a strong crust. This applies on steep sunny slopes below approximately 2800 m as well as in all aspects at intermediate altitudes. In steep terrain there is a danger of falling here. At intermediate altitudes and on very steep sunny slopes the snowpack will soften during the day. At low altitude hardly any snow is lying.

Tendency

The backcountry and freeriding conditions are generally favourable. As a consequence of warming, the likelihood of wet avalanches during the day being released will increase a little.

Danger Level 1 - Low



Tendency: Constant avalanche danger →
on Saturday 30 03 2019



Wind-drifted
snow



A generally favourable avalanche situation will prevail. Wind slabs require caution.

The no longer entirely fresh wind slabs of the last few days can be released by a single winter sport participant in isolated cases on very steep shady slopes above approximately 2400 m. Individual avalanche prone locations are to be found in particular adjacent to ridgelines and in pass areas, in isolated cases also in gullies and bowls, and behind abrupt changes in the terrain. In high Alpine regions avalanche prone locations are a little more prevalent. Such avalanche prone locations are but are easy to recognise. Mostly the avalanches are only small. Apart from the danger of being buried, restraint should be exercised in particular in view of the danger of avalanches sweeping people along and giving rise to falls.

As a consequence of warming during the day and the solar radiation, the likelihood of moist loose snow slides being released will increase a little on extremely steep sunny slopes.

Snowpack

Danger patterns

dp 6: cold, loose snow and wind

The no longer entirely fresh wind slabs of the last few days have bonded quite well with the old snowpack. They are now only very rarely prone to triggering. The snowpack will become moist. This applies at intermediate altitudes as well as on steep sunny slopes. At low altitude hardly any snow is lying. The old snowpack will be stable over a wide area.

Tendency

The backcountry and freeriding conditions remain favourable. Slight increase in danger of wet and gliding avalanches as the day progresses.

Danger Level 1 - Low



Tendency: Constant avalanche danger →
on Saturday 30 03 2019



Wind-drifted
snow



The weather will be mostly sunny.

The more recent wind slabs can still be released in some cases, especially in gullies and bowls. The avalanche prone locations are easy to recognise. Restraint should be exercised because avalanches can sweep people along and give rise to falls. In steep terrain there is a danger of falling on the hard snow surface. A clear night will be followed in the early morning by favourable conditions, but the danger of wet avalanches will increase later.

Snowpack

Danger patterns

dp 10: springtime scenario

The weather will be mostly sunny. The surface of the snowpack will freeze to form a strong crust and will soften during the day. This applies on steep sunny slopes below approximately 2800 m. In some cases relatively hard layers of snow are lying on a weakly bonded old snowpack.

Tendency

The avalanche conditions are favourable.

Danger Level 1 - Low



Tendency: Constant avalanche danger →
on Saturday 30 03 2019



Persistent
weak layer



Treeline



Wet snow



Treeline

In the Etschtal and in neighbouring regions hardly any snow is lying on northwest and northeast facing slopes.

From a snow sport perspective, insufficient snow is lying.

The avalanche conditions are spring-like. In the late morning a low avalanche danger will persist in some regions. In steep terrain there is a danger of falling on the hard snow surface.

Midday and afternoon: As a consequence of warming and solar radiation a low danger of moist and wet snow slides will be encountered in some regions.

Snowpack

The surface of the snowpack will freeze to form a strong crust and will soften during the day.

Tendency

The avalanche conditions are favourable.