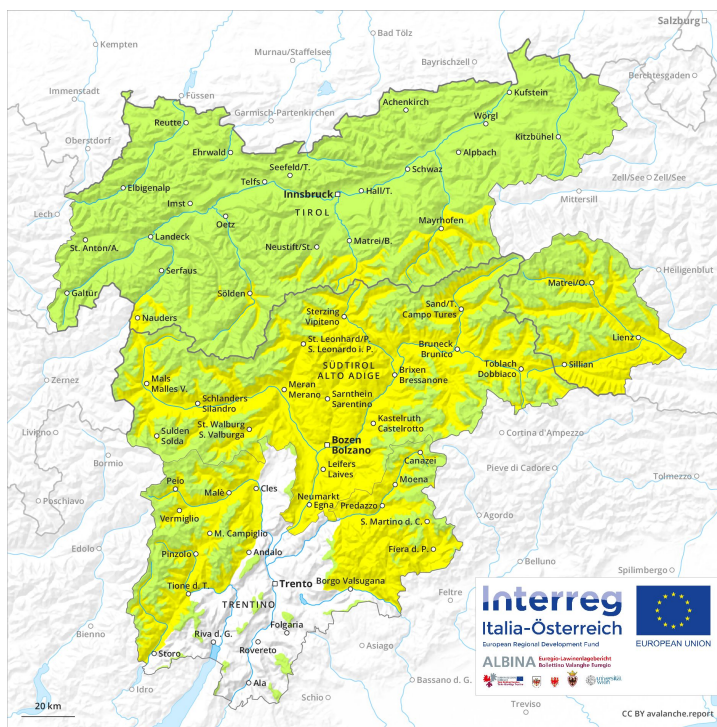
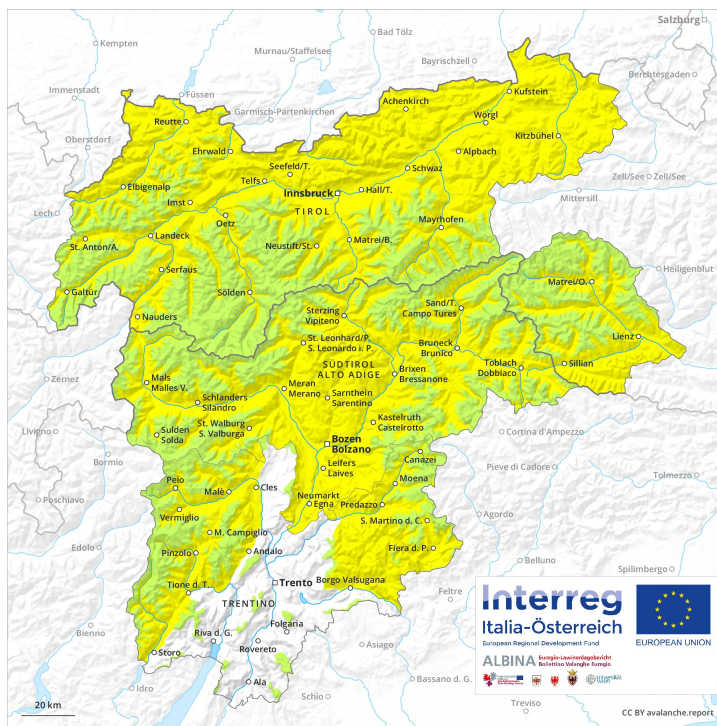




AM



PM



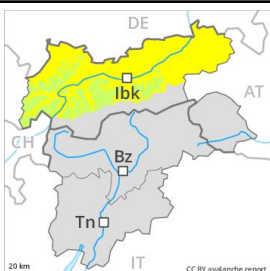
Danger Level 2 - Moderate

AM:



Tendency: Constant avalanche danger →
 on Wednesday 03 04 2019

PM:



Tendency: Constant avalanche danger →
 on Wednesday 03 04 2019



Wet snow



2600m



Gliding snow



2600m

The early morning will see quite favourable avalanche conditions generally, but the danger of wet and gliding avalanches will increase later.

The avalanche conditions remain spring-like. In the late morning a low avalanche danger will be encountered over a wide area. In steep terrain there is a danger of falling on the hard snow surface. This applies in particular on very steep sunny slopes.

Midday and afternoon: As a consequence of warming during the day and the solar radiation, the likelihood of wet loose snow avalanches being released will increase. In addition a latent danger of gliding avalanches exists. The avalanche prone locations are to be found in particular on very steep sunny slopes below approximately 2600 m.

Snowpack

Danger patterns

dp 10: springtime scenario

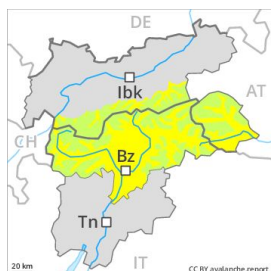
dp 2: gliding snow

Outgoing longwave radiation during the night will be quite good. The surface of the snowpack has frozen to form a strong crust only at high altitudes and will soften earlier than the day before. This applies on steep sunny slopes. At low altitude hardly any snow is lying.

Tendency

Outgoing longwave radiation during the night will be reduced. Gradual increase in avalanche danger.

Danger Level 2 - Moderate



Tendency: Increasing avalanche danger
on Wednesday 03 04 2019



Wet snow



2600m

The early morning will see sometimes favourable avalanche conditions, but the danger of wet avalanches will increase later.

The avalanche danger will already be elevated in the early morning, in particular on steep sunny slopes below approximately 2200 m as well as on shady slopes below approximately 1800 m. On sunny slopes the snowpack will freeze with a strong crust only above approximately 2200 m. In steep terrain there is a danger of falling on the hard snow surface.

Midday and afternoon:

As a consequence of warming during the day and solar radiation there will be an increase in the danger of moist and wet snow slides. The avalanche prone locations are to be found in particular on very steep sunny slopes below approximately 2600 m.

Snowpack

Danger patterns

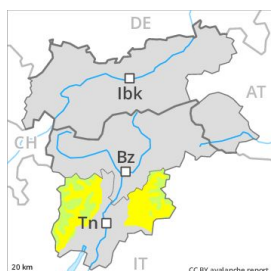
dp 10: springtime scenario

Outgoing longwave radiation during the night will be reduced over a wide area. On steep sunny slopes the snowpack will freeze with a strong crust only above approximately 2200 m. The surface of the snowpack will soften earlier than the day before. This applies in all aspects at intermediate altitudes as well as on sunny slopes below approximately 3000 m. The old snowpack will be stable over a wide area. The wind slabs of last week have bonded well with the old snowpack. At low altitude hardly any snow is lying.

Tendency

In some regions increase in avalanche danger as a consequence of fresh snow and wind.

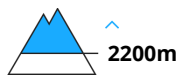
Danger Level 2 - Moderate



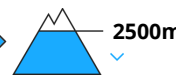
Tendency: Increasing avalanche danger
on Wednesday 03 04 2019



Wind-drifted
snow



Wet snow



The conditions remain favourable.

Avalanches can in very isolated cases be released in near-ground layers by large loads. These avalanche prone locations are to be found in particular on very steep, little used north and northeast facing slopes above approximately 2200 m. As a consequence of solar radiation individual moist and wet avalanches are possible as the day progresses, but they will be mostly small.

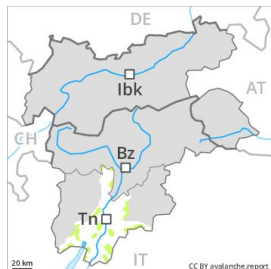
Snowpack

The old snowpack will be generally stable. The mostly small wind slabs of recent weeks have bonded quite well with the old snowpack in particular on steep sunny slopes. They are to be evaluated with care and prudence in particular in very steep terrain. The surface of the snowpack will only just freeze and will soften earlier than the day before, especially below approximately 2500 m. Faceted weak layers exist deep in the snowpack on rather lightly snow-covered shady slopes.

Tendency

Down to 1500 m and below snow will fall over a wide area. Gradual increase in avalanche danger as the snowfall becomes more intense.

Danger Level 1 - Low



Tendency: Increasing avalanche danger
on Wednesday 03 04 2019



Persistent
weak layer



In the Etschtal and in neighbouring regions hardly any snow is lying on north and northeast facing slopes.

The avalanche conditions remain spring-like. From a snow sport perspective, insufficient snow is lying. In steep terrain there is a danger of falling on the hard snow surface. As a consequence of warming and solar radiation a low danger of moist and wet snow slides will be encountered in some localities.

Snowpack

Only a little snow is lying on north and northeast facing slopes. The surface of the snowpack will only just freeze and will soften during the day.

Tendency

Above approximately 1600 m snow will fall over a wide area. Gradual increase in avalanche danger as the snowfall becomes more intense.