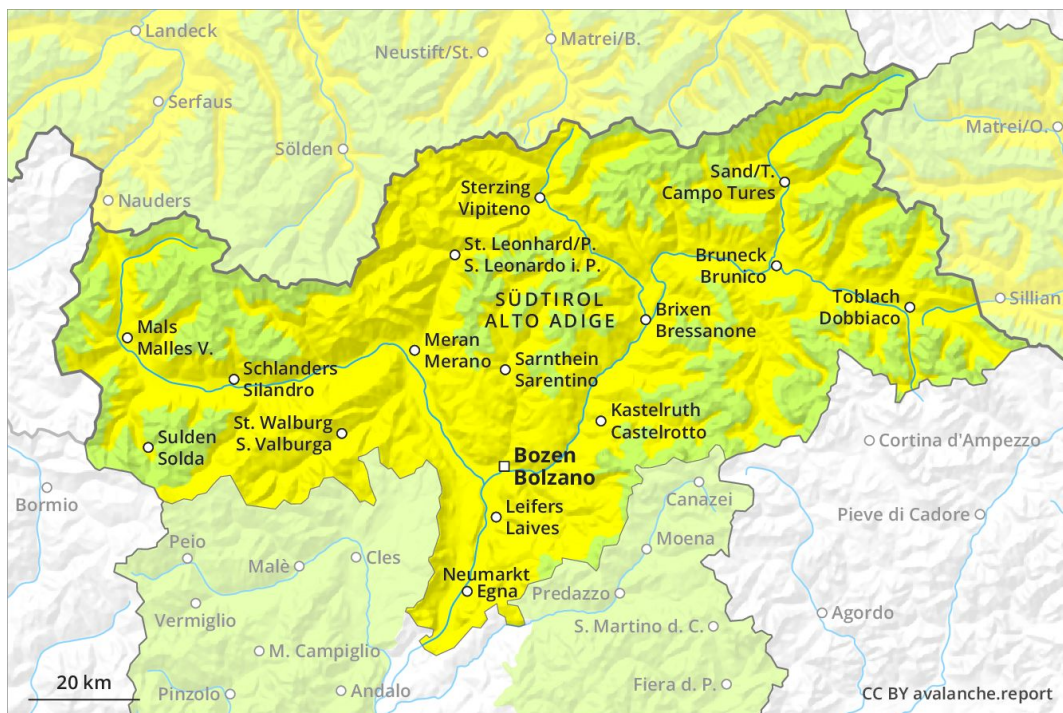
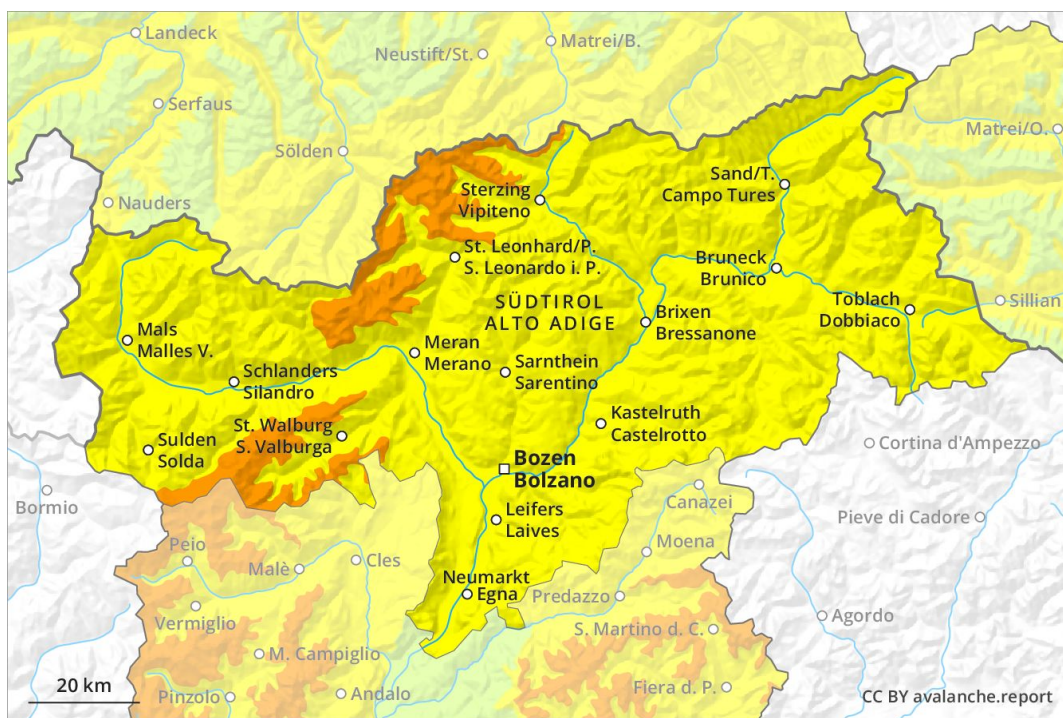


AM



PM



Danger Level 3 - Considerable

AM:



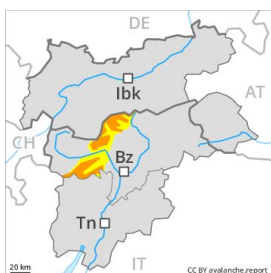
Tendency: Increasing avalanche danger ↗
 on Thursday 04 04 2019



Wet snow



PM:



Tendency: Increasing avalanche danger ↗
 on Thursday 04 04 2019



Wind-drifted snow



Fresh wind slabs require caution.

Night: As a consequence of fresh snow and a sometimes strong southerly wind, sometimes avalanche prone wind slabs will form in particular on north facing slopes. The wind slabs are mostly only small.

Wet snow requires caution, in particular on steep sunny slopes below approximately 2400 m as well as on shady slopes below approximately 2200 m.

During the day: As a consequence of fresh snow and strong wind there will be a gradual increase in the danger of dry avalanches to level 3 (considerable). The avalanche prone locations are to be found in particular on steep shady slopes above approximately 2200 m. Small and, in isolated cases, medium-sized natural avalanches are possible on wind-loaded slopes. At high altitudes and in high Alpine regions avalanche prone locations are more prevalent. In steep terrain there is a danger of falling on the hard snow surface.

Snowpack

Danger patterns

dp 6: cold, loose snow and wind

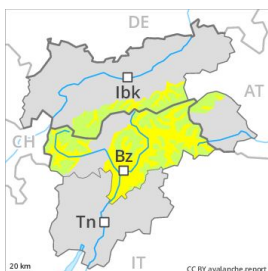
15 to 30 cm of snow, and even more in some localities, will fall above approximately 1800 m. Over a wide area strong southerly wind. The fresh wind slabs are lying on soft layers in particular on northwest to north to northeast facing aspects above approximately 2200 m. Outgoing longwave radiation during the night will be reduced over a wide area. On steep sunny slopes the snowpack will freeze with a strong crust only above approximately 2400 m. The old snowpack will be stable over a wide area. At low altitude hardly any snow is lying.

Tendency

Sharp increase in avalanche danger as the snowfall becomes more intense.

Danger Level 2 - Moderate

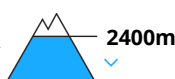
AM:



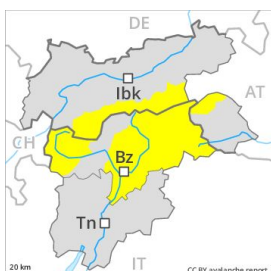
Tendency: Increasing avalanche danger
 on Thursday 04 04 2019



Wet snow



PM:



Tendency: Increasing avalanche danger
 on Thursday 04 04 2019



Wind-drifted
 snow



Gradual increase in danger of dry avalanches as a consequence of fresh snow and strong wind.

Wet snow requires caution. The avalanche danger will already be elevated in the early morning, in particular on steep sunny slopes below approximately 2400 m as well as in all aspects below approximately 2200 m.

During the day: As a consequence of fresh snow and strong wind there will be an increase in the danger of dry avalanches to level 2 (moderate). The avalanche prone locations are to be found in particular on steep shady slopes above approximately 2400 m. In regions exposed to heavier precipitation and at high altitudes and in high Alpine regions avalanche prone locations are more prevalent and the danger is greater. In steep terrain there is a danger of falling on the hard snow surface.

Snowpack

Danger patterns

dp 6: cold, loose snow and wind

In some regions 5 to 20 cm of snow, and even more in some localities, will fall above approximately 1800 m. Over a wide area strong southerly wind. The fresh wind slabs are lying on soft layers in particular on northwest to north to northeast facing aspects above approximately 2400 m. Outgoing longwave radiation during the night will be reduced over a wide area. On steep sunny slopes the snowpack will freeze with a strong crust only above approximately 2400 m. The old snowpack will be stable over a wide area. At low altitude hardly any snow is lying.

Tendency

Sharp increase in avalanche danger as the snowfall becomes more intense.