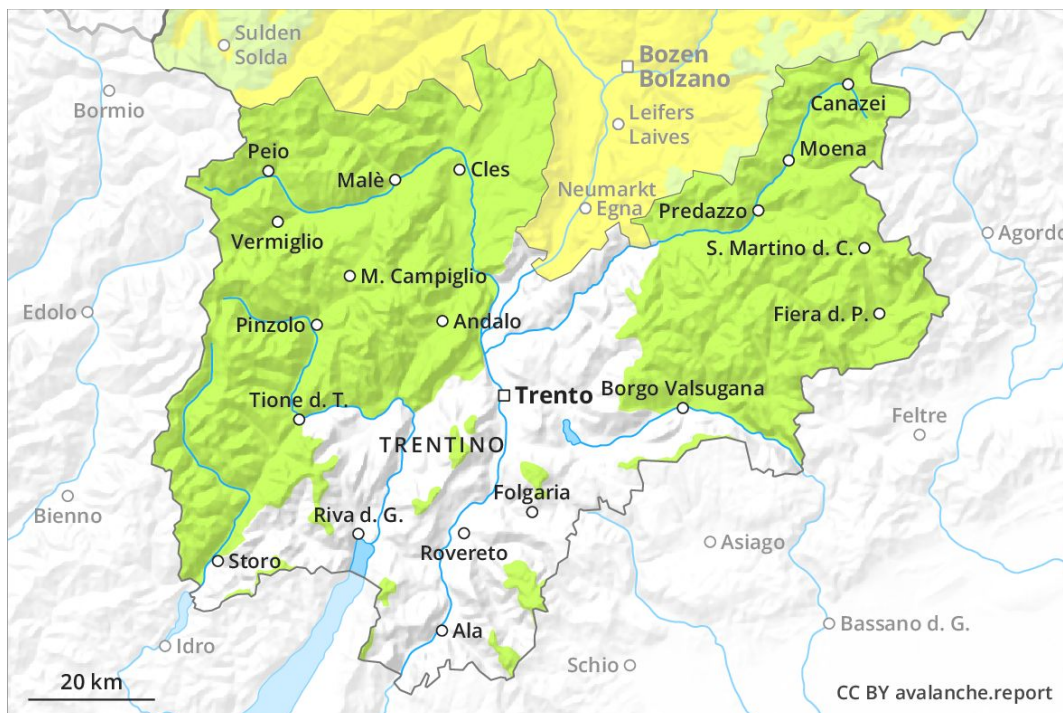
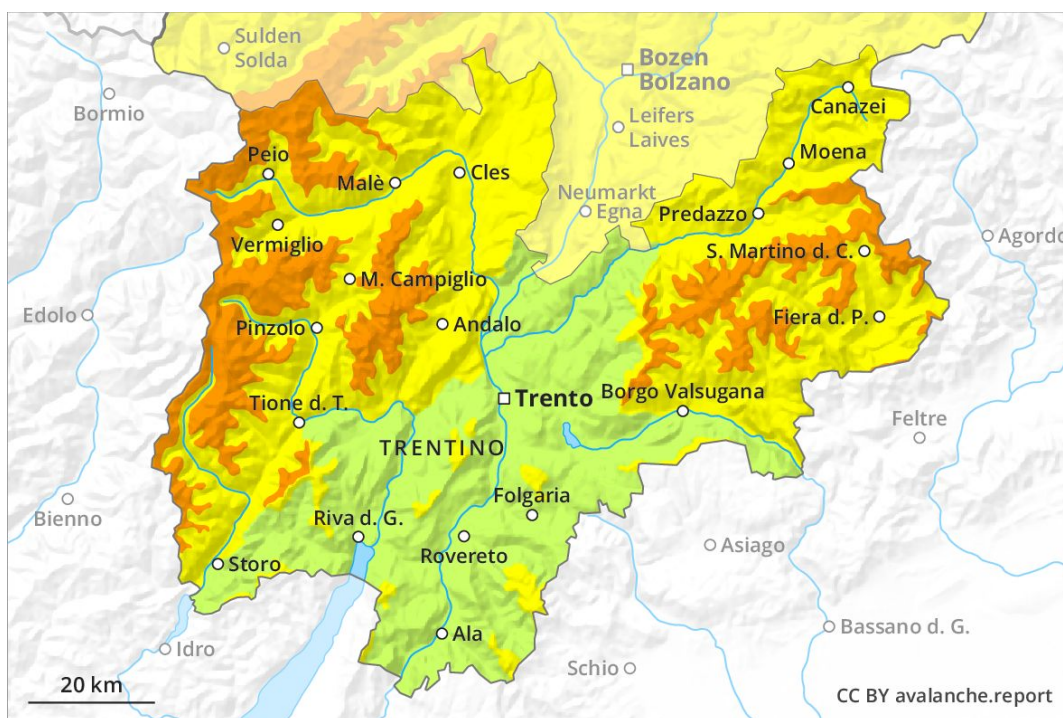


**AM**



**PM**



## Danger Level 3 - Considerable

**AM:**



**Tendency: Increasing avalanche danger**  
 on Thursday 04 04 2019

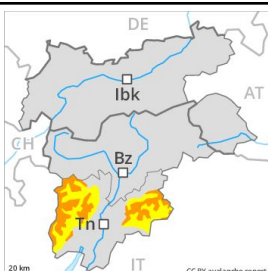


Wind-drifted  
 snow



2200m

**PM:**



**Tendency: Increasing avalanche danger**  
 on Thursday 04 04 2019



New snow



1500m

The avalanche conditions remain favourable. As the snowfall becomes more intense the avalanche prone locations will become more prevalent as the day progresses.

Avalanches can in very isolated cases be released in near-ground layers by large loads. These avalanche prone locations are to be found in particular on very steep, little used north and northeast facing slopes above approximately 2200 m. 10 to 30 cm of snow. will fall from late morning above approximately 1500 m. As the precipitation becomes more intense more frequent natural dry avalanches are possible as the day progresses, but they will be mostly small.

### Snowpack

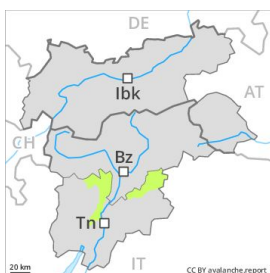
The old snowpack will be generally stable. The mostly small wind slabs of recent weeks have bonded quite well with the old snowpack in particular on steep sunny slopes. The surface of the snowpack will only just freeze and will soften earlier than the day before, especially below approximately 2500 m. Faceted weak layers exist deep in the snowpack on rather lightly snow-covered shady slopes. The fresh snow is bonding only slowly with the old snowpack in particular on shady slopes.

### Tendency

Further increase in avalanche danger as a consequence of fresh snow and wind. Towards the evening probably danger level 4 (high) will be reached in these regions.

## Danger Level 2 - Moderate

**AM:**



**Tendency: Increasing avalanche danger**  
 on Thursday 04 04 2019

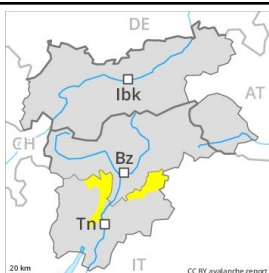


Wind-drifted  
 snow



2200m

**PM:**



**Tendency: Increasing avalanche danger**  
 on Thursday 04 04 2019



New snow



1500m

The avalanche conditions remain favourable. As the snowfall becomes more intense the avalanche prone locations will become more prevalent as the day progresses.

Avalanches can in very isolated cases be released in near-ground layers by large loads. These avalanche prone locations are to be found in particular on very steep, little used north and northeast facing slopes above approximately 2200 m. 10 to 20 cm of snow, and even more in some localities, will fall from late morning above approximately 1500 m. As the precipitation becomes more intense natural dry avalanches are possible as the day progresses, but they will be mostly small.

### Snowpack

The old snowpack will be generally stable. The mostly small wind slabs of recent weeks have bonded quite well with the old snowpack in particular on steep sunny slopes. The surface of the snowpack will only just freeze and will soften earlier than the day before, especially below approximately 2500 m. Faceted weak layers exist deep in the snowpack on rather lightly snow-covered shady slopes. The fresh snow is bonding only slowly with the old snowpack in particular on shady slopes.

### Tendency

Further increase in avalanche danger as a consequence of fresh snow and wind. Towards the evening probably danger level 4 (high) will be reached in these regions.

## Danger Level 2 - Moderate

**AM:**



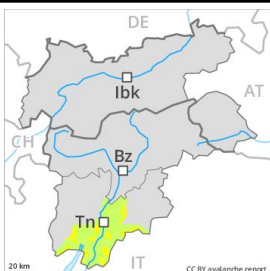
**Tendency: Increasing avalanche danger**  
 on Thursday 04 04 2019



Persistent weak layer



**PM:**



**Tendency: Increasing avalanche danger**  
 on Thursday 04 04 2019



New snow



In the Etschtal and in neighbouring regions hardly any snow is lying. Above approximately 1500 m snow will fall from late morning in some localities. As a consequence of the fresh snow the prevalence of avalanche prone locations will increase as the day progresses.

From a snow sport perspective, insufficient snow is lying. In steep terrain there is a danger of falling on the hard snow surface. 5 to 15 cm of snow, and even more in some localities, will fall from late morning above approximately 1500 m. As a consequence of the fresh snow individual natural avalanches are possible, but they will be mostly small.

### Snowpack

Only a little snow is lying on north and northeast facing slopes. The surface of the snowpack will only just freeze and will soften during the day. The fresh snow can be released naturally in all aspects.

### Tendency

Further increase in avalanche danger as the snowfall level drops. Towards the evening in some localities danger level 4 (high) will be reached in these regions.