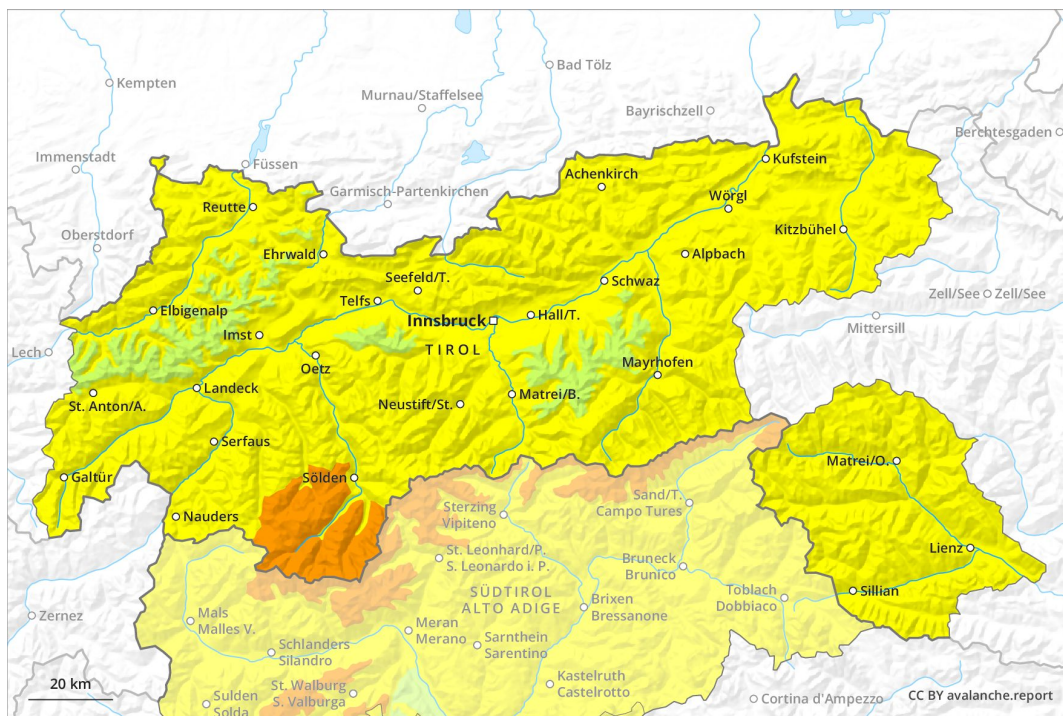
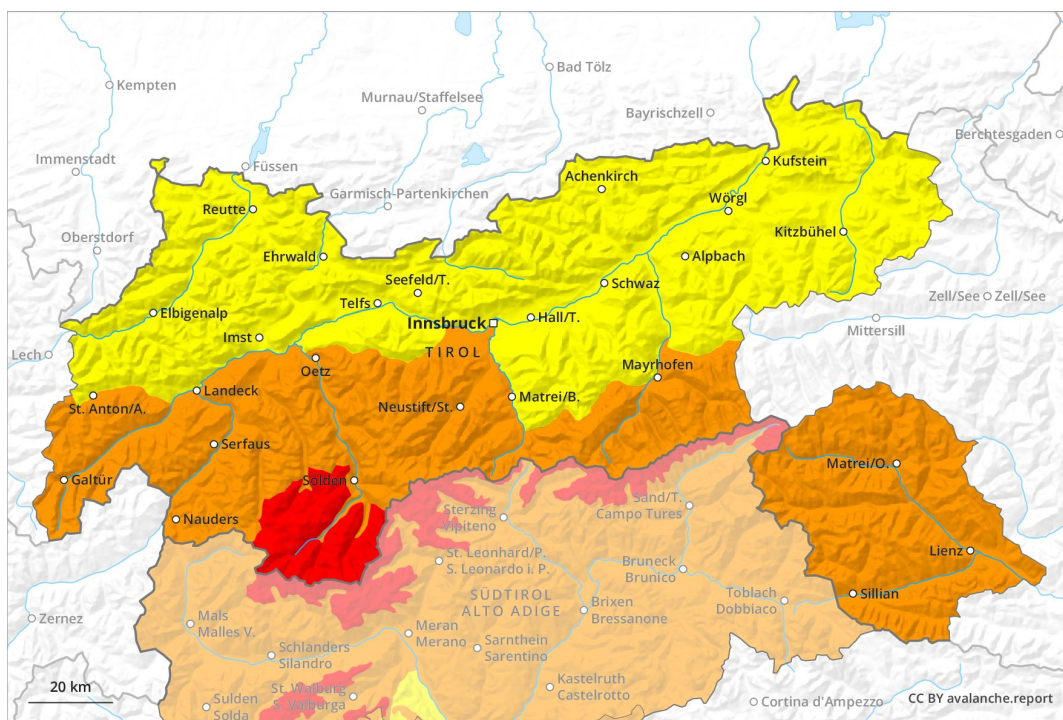


### AM

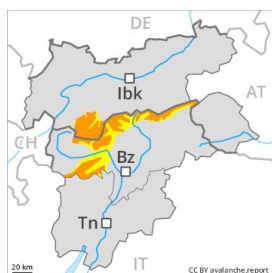


### PM



## Danger Level 4 - High

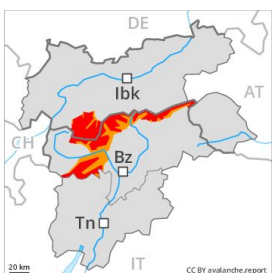
**AM:**



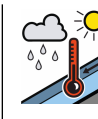
**Tendency: Constant avalanche danger** →  
 on Friday 05 04 2019



**PM:**



**Tendency: Constant avalanche danger** →  
 on Friday 05 04 2019



Further increase in avalanche danger as the precipitation becomes more intense.

As a consequence of fresh snow and a strong to storm force southerly wind, easily released wind slabs will form in all aspects, in particular above the tree line. The wind slabs are in many cases thick. As the snowfall becomes more intense the prevalence and size of the avalanche prone locations will increase. At high altitudes and in high Alpine regions avalanche prone locations are more prevalent. Medium-sized and, in isolated cases, large natural avalanches are to be expected in particular on wind-loaded slopes. The peak of avalanche activity will be reached during the course of the night probably.

As a consequence of the rain, the likelihood of wet and gliding avalanches being released will increase significantly in all aspects below the tree line. Exposed parts of transportation routes are endangered in isolated cases.

### Snowpack

**Danger patterns**

dp 6: cold, loose snow and wind

dp 3: rain

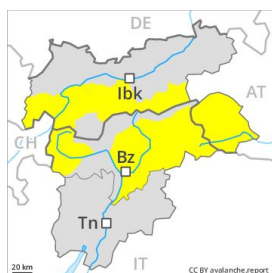
50 to 70 cm of snow. will fall above approximately 1800 m. Over a wide area strong southerly wind. The fresh wind slabs are lying on soft layers in particular on steep shady slopes. The old snowpack will be stable over a wide area. At low altitude hardly any snow is lying.

### Tendency

The avalanche danger will persist. Natural avalanches are still to be expected. Backcountry touring and other off-piste activities call for very extensive experience and great restraint.

## Danger Level 3 - Considerable

**AM:**



**Tendency: Constant avalanche danger** →  
 on Friday 05 04 2019



Wet snow



2200m

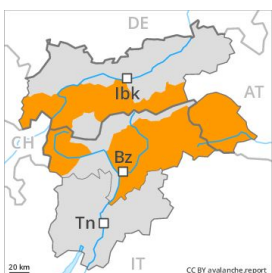


Wind-drifted snow



2200m

**PM:**



**Tendency: Constant avalanche danger** →  
 on Friday 05 04 2019



Wind-drifted snow



Treeline



Wet snow



Treeline

### Significant increase in avalanche danger towards the evening.

Early and late morning: Small to medium-sized wet loose snow avalanches are possible below approximately 2200 m. At elevated altitudes sometimes avalanche prone wind slabs will form. These avalanche prone locations are to be found in particular on very steep shady slopes above approximately 2200 m. At high altitudes and in high Alpine regions the likelihood of avalanches being released is greater. The number and size of avalanche prone locations will increase as the day progresses.

During the day: As a consequence of the rain, the likelihood of gliding avalanches and wet snow slides being released will increase in particular at intermediate altitudes. In addition the danger of dry slab avalanches will increase towards the evening. Especially on very steep shady slopes more frequent medium-sized and, in isolated cases, large natural dry avalanches are possible as the snowfall becomes more intense. The peak of avalanche activity will be reached during the first half of the night probably. In particular in regions neighbouring those that are subject to danger level 4 (high) avalanche prone locations are more prevalent and the danger is greater.

In addition a latent danger of gliding avalanches exists. Backcountry touring and other off-piste activities call for experience in the assessment of avalanche danger.

### Snowpack

**Danger patterns**

dp 6: cold, loose snow and wind

dp 3: rain

30 to 50 cm of snow, and even more in some localities, will fall above approximately 1800 m. The southerly wind will transport the fresh snow significantly. The fresh wind slabs are lying on soft layers in particular on northwest to north to northeast facing aspects above approximately 2200 m. The old snowpack will be stable over a wide area. At low altitude hardly any snow is lying.



## Tendency

A few natural avalanches are to be expected. Backcountry touring and other off-piste activities call for very extensive experience and great restraint.



## Danger Level 2 - Moderate

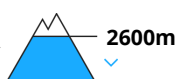
**AM:**



**Tendency: Constant avalanche danger** →  
 on Friday 05 04 2019



Wet snow



**PM:**



**Tendency: Constant avalanche danger** →  
 on Friday 05 04 2019



Wind-drifted snow



Wet snow



### Gradual increase in avalanche danger towards the evening.

Small to medium-sized wet loose snow avalanches are possible below approximately 2600 m, especially on east, south and west facing slopes. As a consequence of the rain, the likelihood of gliding avalanches and wet snow slides being released will increase in particular at low and intermediate altitudes.

At elevated altitudes mostly small wind slabs will form. These avalanche prone locations are to be found in particular on very steep shady slopes above approximately 2200 m. The number and size of avalanche prone locations will increase as the day progresses.

In addition a latent danger of gliding avalanches exists.

### Snowpack

**Danger patterns**

dp 6: cold, loose snow and wind

dp 3: rain

10 to 30 cm of snow, and even more in some localities, will fall above approximately 1800 m. The strong wind will transport the fresh snow significantly. The fresh wind slabs are lying on soft layers in particular on northwest to north to northeast facing aspects above approximately 2200 m. The old snowpack will be stable over a wide area. At low altitude hardly any snow is lying.

### Tendency

Wet loose snow avalanches are to be expected.