

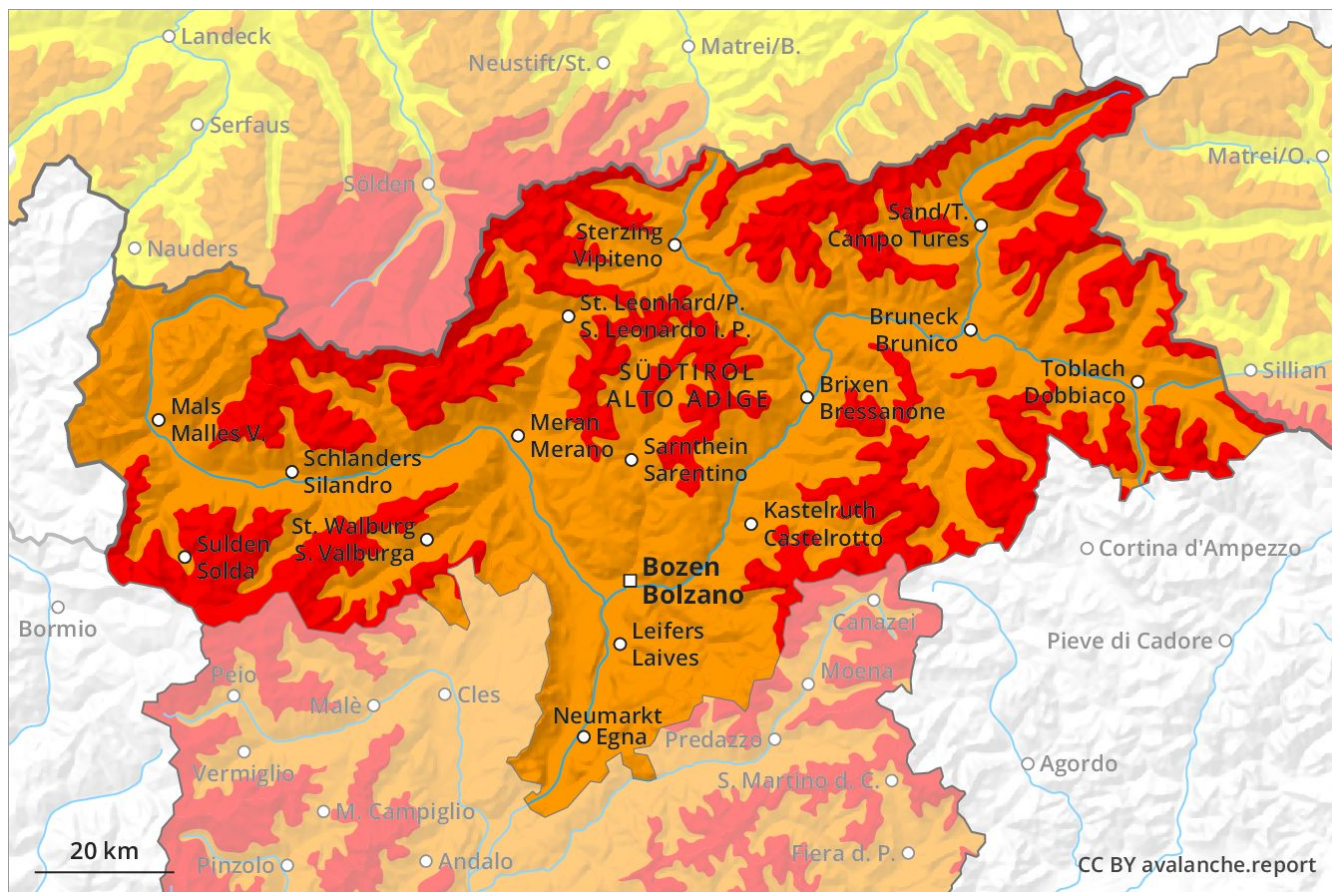
Avalanche Forecast

Friday 05 04 2019

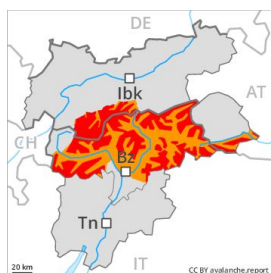
Published 05 04 2019, 08:08



Avalanche.report



Danger Level 4 - High



Tendency: Decreasing avalanche danger
on Saturday 06 04 2019



Wind-drifted
snow



Treeline



Wet snow



Treeline

High avalanche danger will prevail. This applies above the tree line.

As a consequence of fresh snow and a strong to storm force southerly wind, easily released wind slabs formed in all aspects, in particular above the tree line. The fresh wind slabs are in many cases thick and to be assessed critically. At elevated altitudes the likelihood of avalanches being released is greater. At elevated altitudes the prevalence and size of the avalanche prone locations will increase. At high altitudes and in high Alpine regions an increasing number of small to medium-sized avalanches occurred naturally. This applies in all aspects.

In addition as the day progresses on east, south and west facing slopes, numerous medium-sized loose snow avalanches are to be expected. As a consequence of warming during the day and the solar radiation, the likelihood of slab avalanches being released will increase for a while also on very steep sunny slopes above the tree line.

Snowpack

Danger patterns

dp 6: cold, loose snow and wind

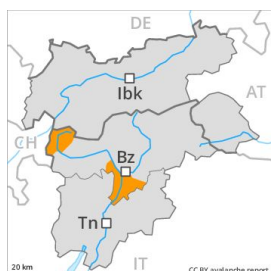
dp 10: springtime scenario

Over a wide area 50 to 100 cm of snow, and even more in some localities, fell above approximately 1800 m. The strong wind has transported a lot of snow. The fresh wind slabs are lying on soft layers in particular on steep shady slopes. The old snowpack will be stable over a wide area. The old snowpack will be wet all the way through at intermediate altitudes. At low altitude hardly any snow is lying.

Tendency

As a consequence of warming during the day and solar radiation numerous medium-sized wet loose snow avalanches are to be expected. Backcountry touring and other off-piste activities call for experience and a certain restraint.

Danger Level 3 - Considerable



Tendency: Constant avalanche danger →
 on Saturday 06 04 2019



Wet snow



Treeline



Wind-drifted
 snow



Treeline

Further increase in danger of dry and wet avalanches as a consequence of the precipitation.

In particular on wind-loaded slopes numerous medium-sized and, in isolated cases, large natural dry avalanches are possible as the snowfall becomes more intense. At elevated altitudes sometimes avalanche prone wind slabs will form. At high altitudes and in high Alpine regions the likelihood of avalanches being released is greater. The peak of avalanche activity will be reached during the night. In particular in regions neighbouring those that are subject to danger level 4 (high) avalanche prone locations are more prevalent and the danger is greater. As a consequence of the rain, the likelihood of gliding avalanches and wet snow slides being released will increase in particular at intermediate altitudes. Small to medium-sized wet loose snow avalanches are possible below approximately 2000 m. In addition a latent danger of gliding avalanches exists. Backcountry touring and other off-piste activities call for extensive experience in the assessment of avalanche danger.

Snowpack

20 to 50 cm of snow, and even more in some localities, will fall above approximately 1500 m. The southerly wind will transport the fresh snow significantly. The old snowpack will be stable over a wide area. At low altitude hardly any snow is lying.

Tendency

A few natural avalanches are to be expected. Backcountry touring and other off-piste activities call for very extensive experience and great restraint.