

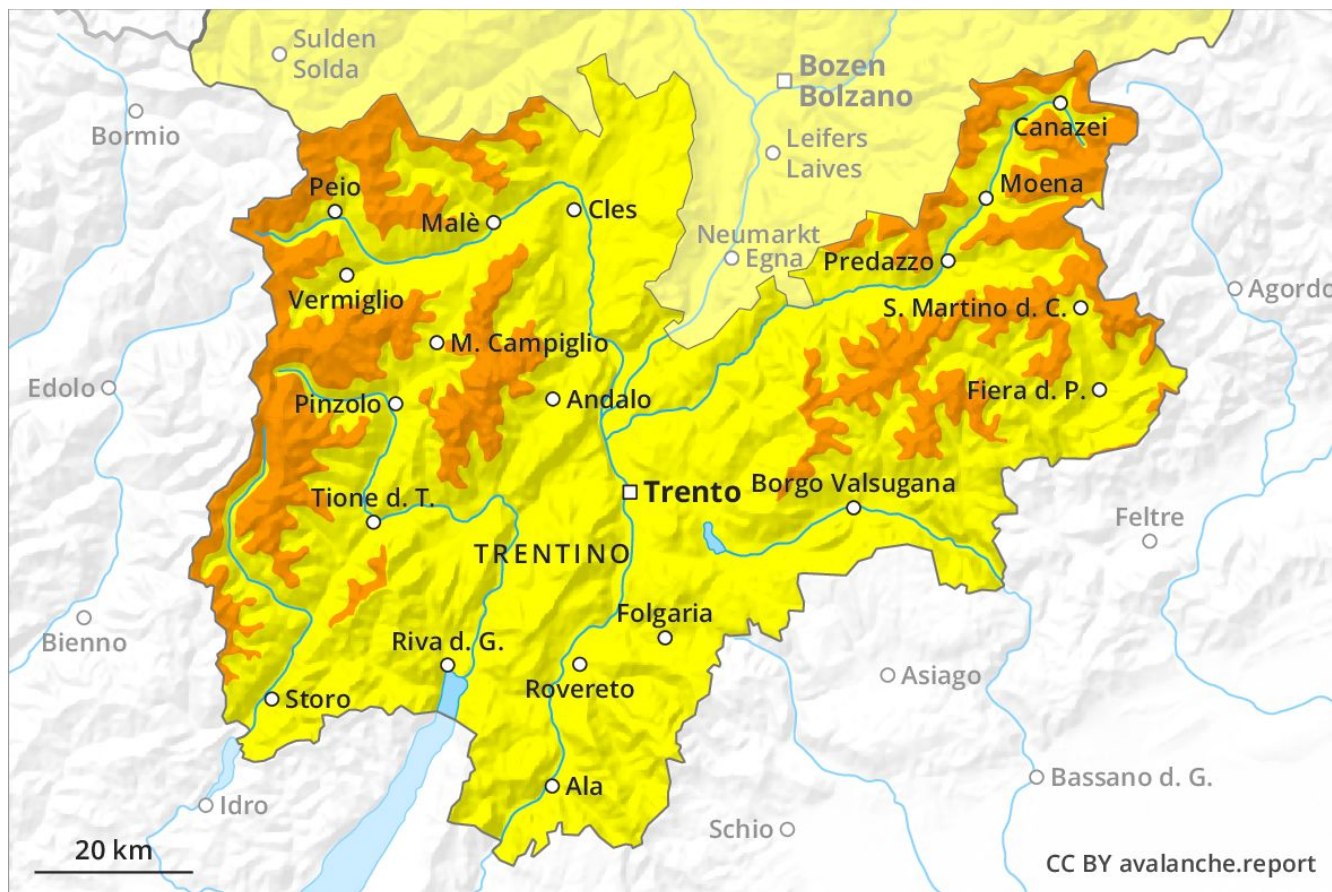
Avalanche Forecast

Tuesday 09 04 2019

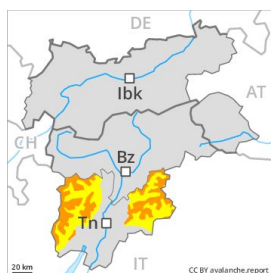
Published 08 04 2019, 17:00



Avalanche.report



Danger Level 3 - Considerable



Tendency: Decreasing avalanche danger
on Wednesday 10 04 2019



Wind-drifted
snow



Treeline



Wet snow



2000m

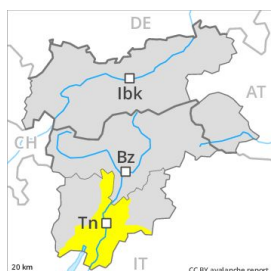
The fresh snow and wind slabs must be evaluated with care and prudence above approximately 2000 m. On steep grassy slopes and at the base of rock walls individual moist loose snow avalanches are possible, but they will be mostly small.

As a consequence of warming during the day individual natural avalanches are possible, but they will be mostly small. These can in isolated cases penetrate down to the ground and reach medium size. In particular, however, the wind slabs must be taken into account. They can be released, even by small loads in isolated cases. Above the tree line the likelihood of avalanches being released is greater. The avalanche prone locations are to be found on steep slopes of all aspects and adjacent to ridgelines and in gullies and bowls.

Snowpack

The southerly wind has transported the fresh snow significantly. It is lying on top of a quite favourable old snowpack in particular on sunny slopes. The fresh wind slabs must be evaluated with care and prudence in particular on very steep north, northeast and northwest facing slopes above approximately 2000 m. Faceted weak layers exist deep in the snowpack on wind-protected shady slopes.

Danger Level 2 - Moderate



Tendency: Decreasing avalanche danger
on Wednesday 10 04 2019



Wind-drifted
snow



Wet snow



Small avalanches and moist snow slides are possible in isolated cases as before.

As a consequence of warming during the day individual natural avalanches are possible, but they will be mostly small. Above approximately 2000 m the likelihood of avalanches being released is greater. In addition the wind slabs must be taken into account. These can in very isolated cases be released, in particular by large loads, but they will be small in most cases. The avalanche prone locations are to be found in particular in gullies and bowls in all aspects and adjacent to ridgelines in all altitude zones.

Snowpack

The fresh snow and wind slabs remain in some cases prone to triggering above approximately 2000 m. The clearly visible wind slabs of last week represent the main danger. Below approximately 1500 m from a snow sport perspective, insufficient snow is lying.