

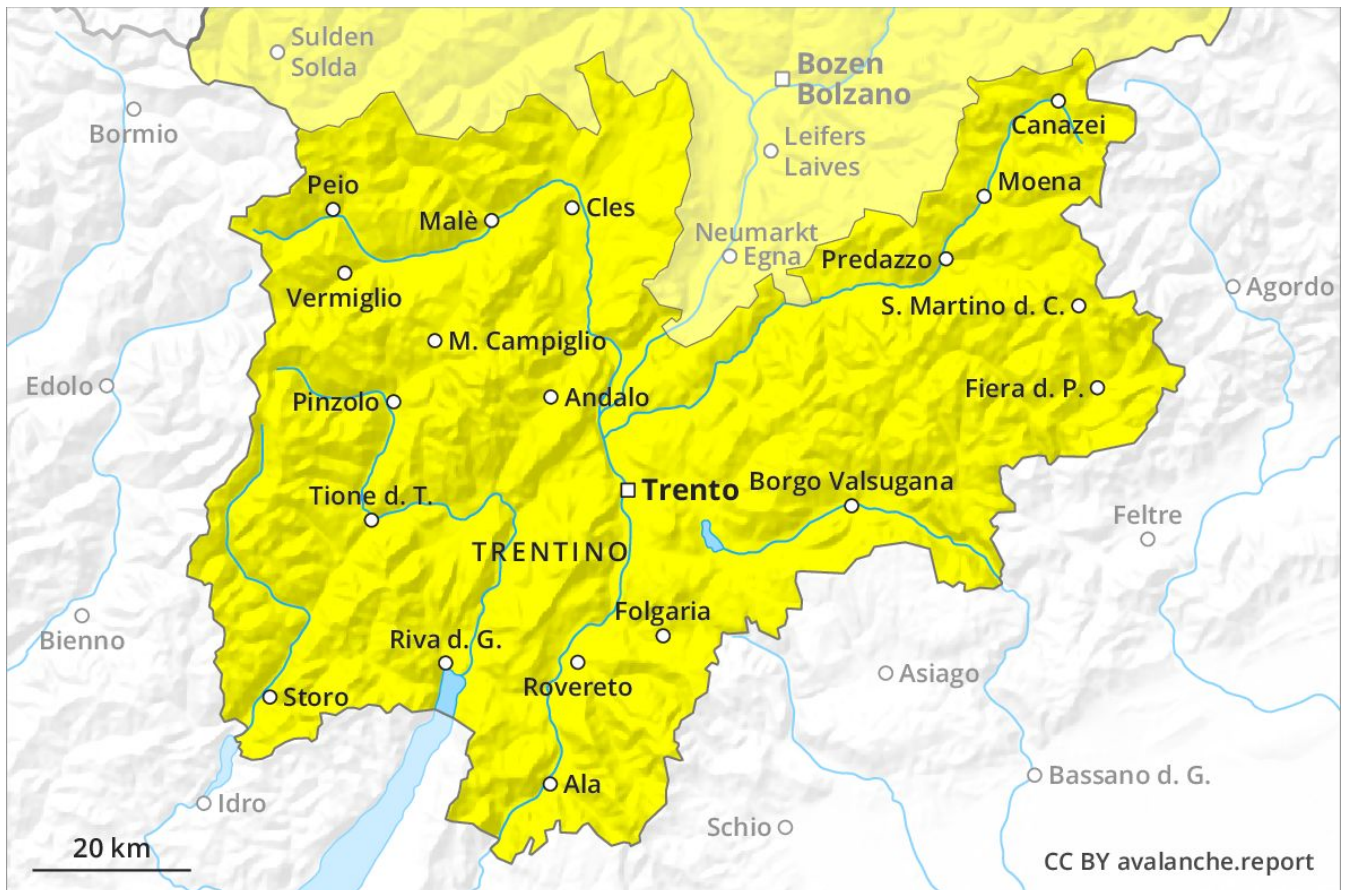
# Avalanche Forecast

## Thursday 11 04 2019

Published 10 04 2019, 17:00



Avalanche.report



## Danger Level 2 - Moderate



**Tendency: Constant avalanche danger** →  
on Friday 12 04 2019



New snow



Treeline



Wet snow



2000m

In all aspects and on very steep slopes more moist loose snow avalanches are possible, but they will be mostly small. The fresh snow can be released, especially by large additional loads in all aspects above approximately 2500 m.

As a consequence of warming during the day individual natural avalanches are possible, but they will be mostly small. In particular, however, the wind slabs must be taken into account. They can be released, mostly by large loads in isolated cases. Above the tree line the likelihood of avalanches being released is greater. The avalanche prone locations are to be found on steep slopes of all aspects and adjacent to ridgelines and in gullies and bowls above approximately 2500 m.

### Snowpack

The fresh snow and wind slabs remain in some cases prone to triggering above approximately 2500 m. The clearly visible wind slabs of last week represent the main danger. Below approximately 1500 m hardly any snow is lying.

## Danger Level 2 - Moderate



**Tendency: Decreasing avalanche danger**  
on Friday 12 04 2019



Wet snow



Treeline



Gliding snow



Treeline

Small avalanches and moist snow slides are possible in isolated cases as before.

Above approximately 1800 m individual natural avalanches are possible, but they will be mostly small. In addition the wind slabs must be taken into account. These can in very isolated cases be released, in particular by large loads, but they will be small in most cases. The avalanche prone locations are to be found in particular in gullies and bowls in all aspects and adjacent to ridgelines above approximately 1800 m.

### Snowpack

The fresh snow and wind slabs remain in some cases prone to triggering above approximately 1800 m. The clearly visible wind slabs of last week represent the main danger. Below approximately 1800 m from a snow sport perspective, insufficient snow is lying.

## Danger Level 2 - Moderate



New snow



2000m



Wet snow



In all aspects and on very steep slopes more moist loose snow avalanches are possible, but they will be mostly small. The fresh snow can be released, especially by large additional loads in all aspects above approximately 2500 m.

As a consequence of warming during the day individual natural avalanches are possible, but they will be mostly small. In particular, however, the wind slabs must be taken into account. They can be released, mostly by large loads in isolated cases. Above the tree line the likelihood of avalanches being released is greater. The avalanche prone locations are to be found on steep slopes of all aspects and adjacent to ridgelines and in gullies and bowls.

### Snowpack

The fresh snow and wind slabs remain in some cases prone to triggering above approximately 2000 m. The clearly visible wind slabs of last week represent the main danger. Below approximately 1500 m hardly any snow is lying.