

Avalanche Forecast

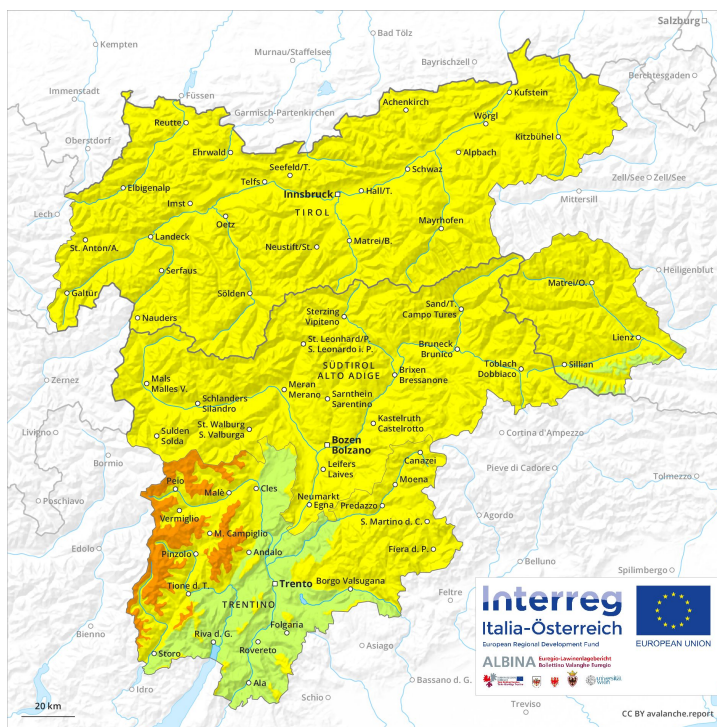
Monday 15 04 2019

Published 15 04 2019, 07:53

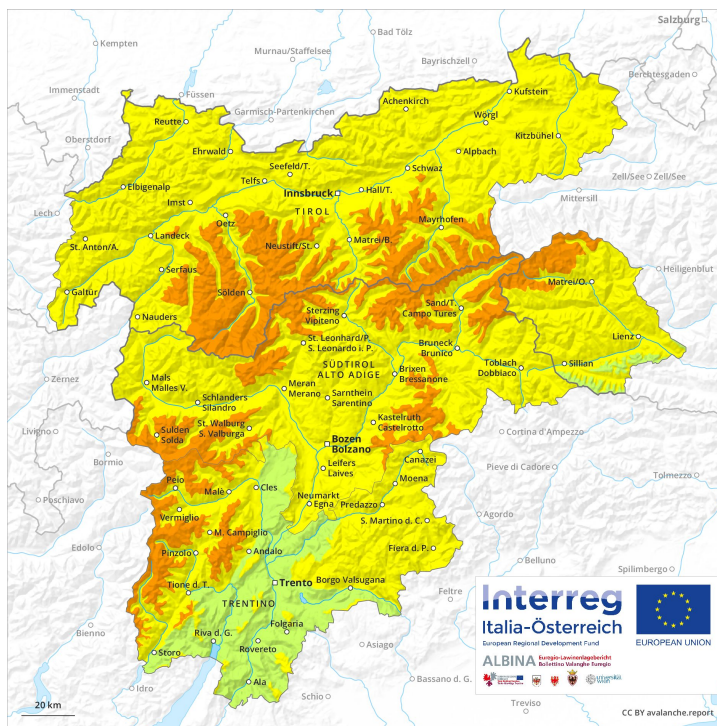


Avalanche.report

AM

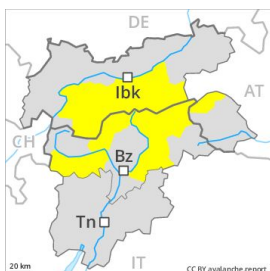


PM



Danger Level 3 - Considerable

AM:



Tendency: Decreasing avalanche danger
 on Tuesday 16 04 2019



Wet snow



Treeline

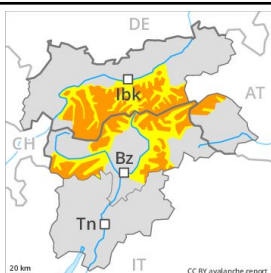


New snow



Treeline

PM:



Treeline

Tendency: Decreasing avalanche danger
 on Tuesday 16 04 2019



Wet snow



2500m



New snow



Treeline

The fresh snow of Sunday must be evaluated with care and prudence. Gliding avalanches are also to be expected.

As a consequence of warming during the day and the solar radiation, the likelihood of moist and wet avalanches being released will increase quickly in particular on steep sunny slopes. Medium-sized and, in isolated cases, large natural avalanches are possible in particular at the base of rock walls and behind abrupt changes in the terrain. In addition still more very occasional small and, in isolated cases, medium-sized dry avalanches are possible. This applies in particular on very steep slopes above approximately 2200 m. Gliding avalanches can also be released in the morning.

Snowpack

More snow than expected has fallen in some localities. The old snowpack will be wet all the way through below approximately 2500 m. As the day progresses as a consequence of warming during the day and solar radiation there will be a rapid increase in the danger of moist and wet avalanches to level 3 (considerable). This applies in all aspects in particular below approximately 2500 m.

Tendency

Moderate, level 2. The conditions are sometimes unfavourable for backcountry touring and other off-piste activities.

Danger Level 3 - Considerable



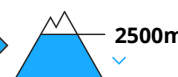
Tendency: Constant avalanche danger →
on Tuesday 16 04 2019



New snow



Wet snow



In all aspects and on very steep slopes moist snow slides and avalanches are possible, even medium-sized ones. The fresh snow can be released easily, even by a single winter sport participant in all aspects above approximately 2000 m.

Above the tree line the likelihood of avalanches being released is greater. As a consequence of warming during the day individual natural avalanches are possible, even medium-sized ones. In addition the older wind slabs must be taken into account. They can be released, mostly by large loads in isolated cases and reach medium size. The avalanche prone locations are to be found on steep slopes of all aspects and adjacent to ridgelines and in gullies and bowls above approximately 2500 m.

Snowpack

The snowpack will be generally moist. As the day progresses in particular below approximately 2500 m there will be an increase in the danger of wet snow slides within the current danger level. The fresh snow and wind slabs remain in some cases prone to triggering above approximately 2500 m. The fresh and older wind slabs represent the main danger. They are to be evaluated with care and prudence in all aspects above approximately 2500 m. Below approximately 1500 m hardly any snow is lying.

Tendency

The avalanche danger will persist.

Danger Level 2 - Moderate



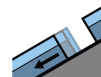
Tendency: Constant avalanche danger →
on Tuesday 16 04 2019



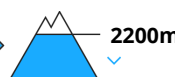
Wet snow



2200m



Gliding snow



2200m

The avalanche conditions are wintry at high altitude. Wet and gliding avalanches are the main danger.

As the snowfall eases more mostly small wet loose snow avalanches are possible below approximately 2200 m. This also applies on extremely steep sunny slopes at elevated altitudes, in the event of solar radiation in particular.

In addition a moderate (level 2) danger of gliding avalanches exists. On steep grassy slopes individual small to medium-sized avalanches are possible. This applies in all aspects below approximately 2200 m.

Snowpack

Danger patterns

dp 10: springtime scenario

dp 2: gliding snow

Over a wide area 5 to 10 cm of snow, and even more in some localities, fell above approximately 1000 m. The snowpack will be stable at high altitude. The snowpack will be wet all the way through at low and intermediate altitudes. Outgoing longwave radiation during the night will be reduced. The surface of the snowpack will freeze very little and will soften quickly.

Tendency

The avalanche conditions remain wintry at high altitude.

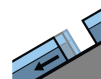
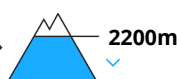
Danger Level 2 - Moderate



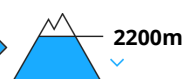
Tendency: Constant avalanche danger →
on Tuesday 16 04 2019



Wet snow



Gliding snow



Wet and gliding avalanches are the main danger. Fresh wind slabs require caution.

As the precipitation eases more small to medium-sized wet loose snow avalanches are possible below approximately 2200 m. In addition a moderate (level 2) danger of gliding avalanches exists. On steep grassy slopes individual small to medium-sized avalanches are possible. This applies in all aspects below approximately 2200 m.

Individual avalanche prone locations for dry avalanches are to be found in particular on very steep shady slopes above approximately 2600 m. The fresh wind slabs are mostly shallow but can in some cases be released easily.

Snowpack

Danger patterns

dp 10: springtime scenario

dp 2: gliding snow

Over a wide area 10 to 15 cm of snow, and even more in some localities, fell above approximately 1000 m. As a consequence of fresh snow and a moderate easterly wind, sometimes avalanche prone wind slabs formed on Sunday in particular adjacent to ridgelines as well as above the tree line. The old snowpack will be well bonded at high altitudes and in high Alpine regions. The snowpack will be wet all the way through below approximately 2000 m. Outgoing longwave radiation during the night will be reduced. The surface of the snowpack will freeze very little and will soften quickly.

Tendency

The avalanche conditions remain wintry at high altitude.

Danger Level 2 - Moderate



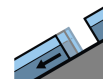
Tendency: Constant avalanche danger →
on Tuesday 16 04 2019



Wet snow



2200m



Gliding snow



2200m

Wet and gliding avalanches are the main danger. Fresh wind slabs require caution.

As the precipitation eases more small to medium-sized wet loose snow avalanches are possible below approximately 2200 m. In addition a moderate (level 2) danger of gliding avalanches exists. On steep grassy slopes individual small to medium-sized avalanches are possible. This applies in all aspects below approximately 2200 m.

Individual avalanche prone locations for dry avalanches are to be found in particular on very steep shady slopes above approximately 2200 m.

Snowpack

Danger patterns

dp 10: springtime scenario

dp 2: gliding snow

In some regions up to 5 cm of snow, but less in some localities, fell above approximately 1000 m. As a consequence of fresh snow and a moderate easterly wind, mostly small wind slabs formed on Sunday in particular adjacent to ridgelines as well as above the tree line. The old snowpack will be well bonded at high altitudes and in high Alpine regions. The snowpack will be wet all the way through below approximately 2000 m. Outgoing longwave radiation during the night will be reduced. The surface of the snowpack will freeze very little and will soften quickly.

Tendency

The avalanche conditions remain generally favourable.

Danger Level 2 - Moderate

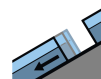


Tendency: Constant avalanche danger →

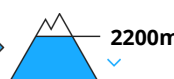
on Tuesday 16 04 2019



Wet snow



Gliding snow



The avalanche conditions are quite favourable. Wet avalanches are the main danger.

As the precipitation eases more mostly small wet loose snow avalanches are possible below approximately 2200 m. This also applies on sunny slopes at high altitude, in the event of solar radiation especially. Caution is to be exercised in particular on extremely steep slopes. In addition a certain danger of wet slab avalanches exists, in particular on very steep shady slopes in areas close to the tree line. Such avalanche prone locations are rather rare but are barely recognisable.

Snowpack

Danger patterns

dp 10: springtime scenario

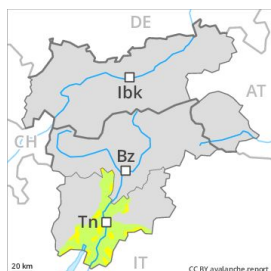
dp 1: deep persistent weak layer

In some regions up to 5 cm of snow, but less in some localities, fell above approximately 1000 m. As a consequence of fresh snow and a moderate easterly wind, rather small wind slabs formed on Sunday in particular adjacent to ridgelines as well as above the tree line. Isolated avalanche prone weak layers exist in the bottom section of the old snowpack on shady slopes. Here individual wet slab avalanches are possible as the penetration by moisture increases. This applies especially in areas close to the tree line. The snowpack will be wet all the way through below approximately 2000 m. Outgoing longwave radiation during the night will be reduced. At low altitude hardly any snow is lying.

Tendency

The avalanche conditions remain generally favourable.

Danger Level 2 - Moderate



Tendency: Constant avalanche danger →
on Tuesday 16 04 2019



Wet snow



Treeline



Gliding snow



Treeline

Small avalanches and moist snow slides are possible in isolated cases as before.

Above approximately 1800 m individual natural avalanches are possible, but they will be mostly small. In addition the wind slabs must be taken into account. These can in very isolated cases be released, in particular by large loads, but they will be small in most cases. The avalanche prone locations are to be found in particular in gullies and bowls in all aspects and adjacent to ridgelines above approximately 1800 m.

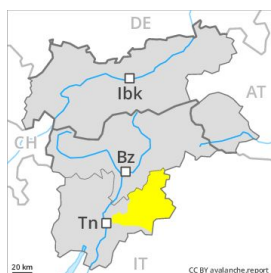
Snowpack

The snowpack will be generally moist. The fresh snow and wind slabs remain in some cases prone to triggering above approximately 1800 m. The fresh and older wind slabs must be evaluated with care and prudence in particular on very steep shady slopes. Below approximately 1800 m from a snow sport perspective, in most cases insufficient snow is lying.

Tendency

The avalanche danger will persist.

Danger Level 2 - Moderate



Tendency: Constant avalanche danger →
on Tuesday 16 04 2019



Wind-drifted
snow



Wet snow



In all aspects and on very steep slopes moist snow slides and avalanches are possible, even medium-sized ones. The fresh snow can be released, especially by large additional loads in all aspects above approximately 2500 m.

Above the tree line the likelihood of avalanches being released is greater. As a consequence of warming during the day individual natural avalanches are possible, even medium-sized ones. In addition the older wind slabs must be taken into account. They can be released, mostly by large loads in isolated cases and reach medium size. The avalanche prone locations are to be found on steep slopes of all aspects and adjacent to ridgelines and in gullies and bowls above approximately 2500 m.

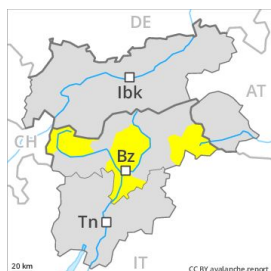
Snowpack

The snowpack will be generally moist. As the day progresses in particular below approximately 2500 m there will be an increase in the danger of wet snow slides within the current danger level. The fresh snow and wind slabs remain in some cases prone to triggering above approximately 2500 m. The fresh and older wind slabs represent the main danger. They are to be evaluated with care and prudence in all aspects above approximately 2500 m. Below approximately 1500 m hardly any snow is lying.

Tendency

The avalanche danger will persist.

Danger Level 2 - Moderate



Tendency: Constant avalanche danger →
on Tuesday 16 04 2019



Wet snow



New snow



Natural wet avalanches are the main danger. The fresh snow of Sunday must be evaluated with care and prudence.

In all regions and below approximately 2500 m moist and wet avalanches are possible. As a consequence of warming during the day, the likelihood of wet avalanches during the day being released will increase gradually. Apart from the danger of being buried, restraint should be exercised as well in view of the danger of avalanches sweeping people along and giving rise to falls. Medium-sized and, in isolated cases, large natural avalanches are possible in particular at the base of rock walls and behind abrupt changes in the terrain. In addition still more very occasional small and, in isolated cases, medium-sized dry avalanches are possible. This applies in particular on very steep slopes above approximately 2200 m.

Snowpack

The surface of the snowpack will only just freeze and will soften quickly. The snowpack will be wet all the way through below approximately 2500 m. As the day progresses as a consequence of warming during the day and solar radiation there will be an increase in the danger of moist and wet avalanches within the current danger level. This applies in all aspects in particular below approximately 2500 m.

Tendency

Moderate, level 2. The conditions are sometimes unfavourable for backcountry touring and other off-piste activities.