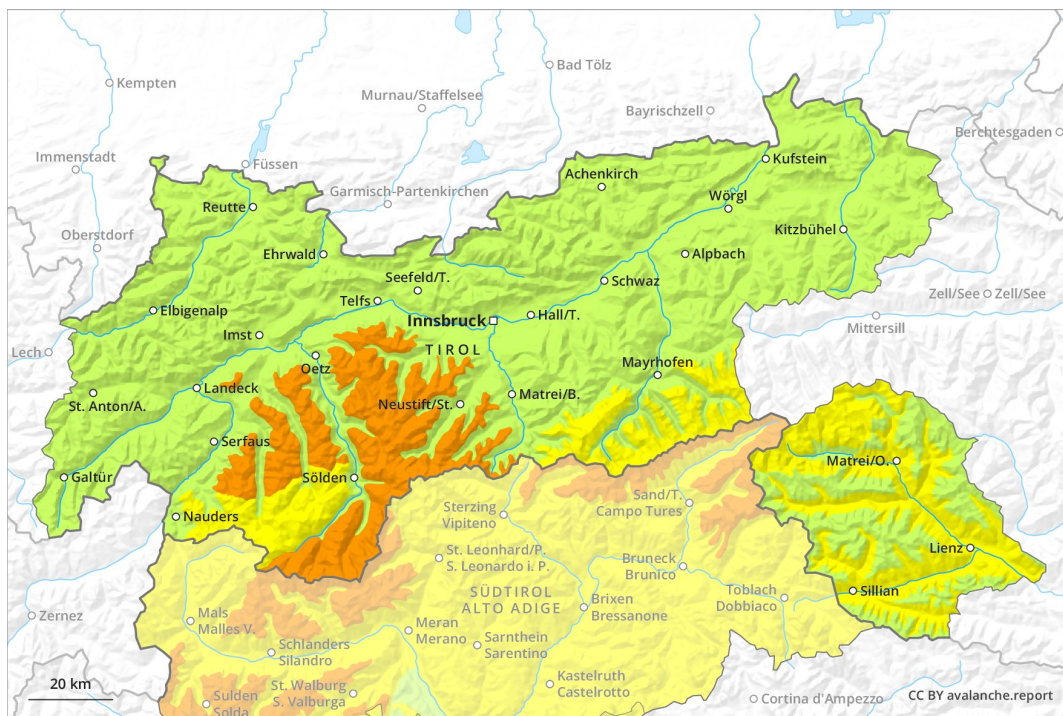
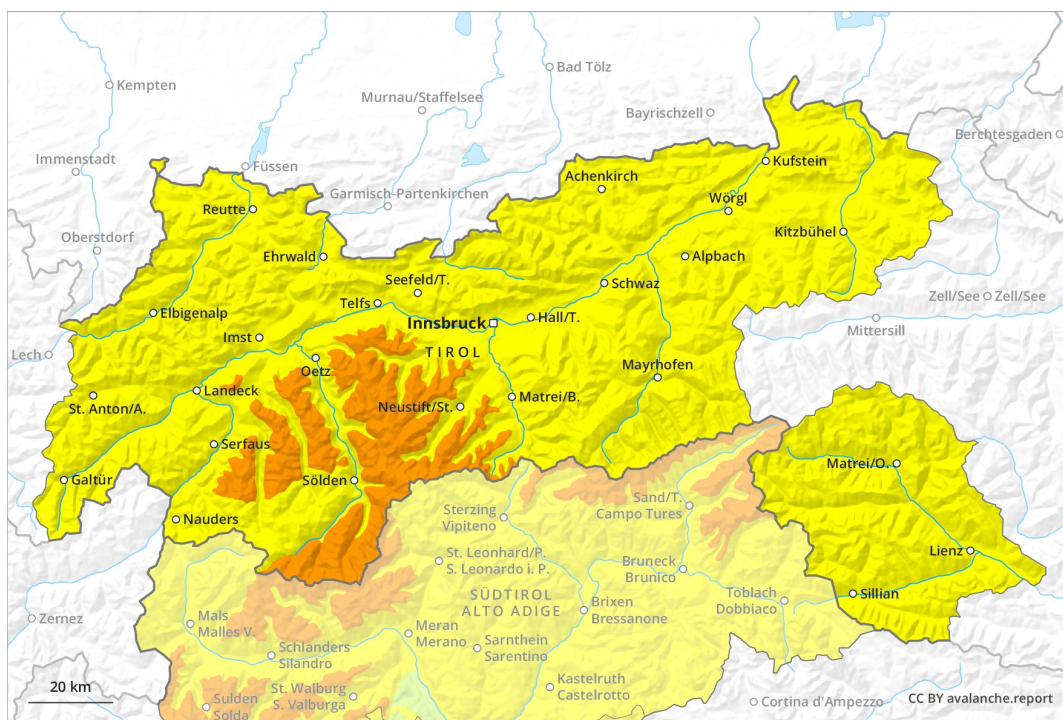




AM

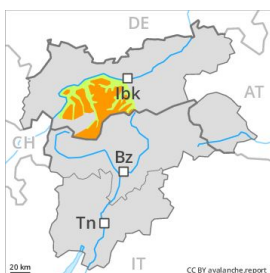


PM



Danger Level 3 - Considerable

AM:



Tendency: Decreasing avalanche danger
 on Wednesday 17 04 2019



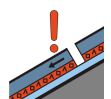
Persistent weak layer



PM:



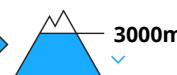
Tendency: Decreasing avalanche danger
 on Wednesday 17 04 2019



Persistent weak layer



Wet snow



Weak layers in the upper part of the snowpack can be released by individual winter sport participants in particular on very steep shady slopes. In addition the danger of wet loose snow avalanches will increase as the day progresses.

A considerable (level 3) danger of dry slab avalanches exists. The avalanche prone locations are to be found in particular on very steep west, north and north facing slopes above approximately 2400 m. The near-surface layers of the snowpack can be released over a wide area by individual winter sport participants, especially between approximately 2400 and 3000 m. Whumpung sounds and the formation of shooting cracks when stepping on the snowpack indicate the danger.

During the day: Gradual increase in avalanche danger as a consequence of warming during the day and solar radiation. As a consequence of the moist air more frequent small and, in isolated cases, medium-sized wet loose snow avalanches are possible. In addition a moderate (level 2) danger of gliding avalanches exists. This applies in all aspects below approximately 2200 m as well as on steep sunny slopes below approximately 2600 m.

Snowpack

Danger patterns

dp 4: cold following warm / warm following cold

dp 10: springtime scenario

Avalanche prone weak layers exist in the top section of the snowpack, in particular on west, north and northeast facing slopes above approximately 2400 m. Outgoing longwave radiation during the night will be good. The surface of the snowpack has frozen to form a strong crust, especially at intermediate and high altitudes. The surface of the snowpack will soften during the day. The old snowpack will be wet all the way through at low and intermediate altitudes. At low altitude hardly any snow is lying.



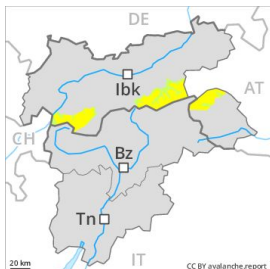
Tendency

The avalanche conditions are spring-like.



Danger Level 2 - Moderate

AM:



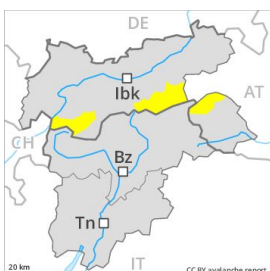
Tendency: Constant avalanche danger →
 on Wednesday 17 04 2019



Persistent weak layer



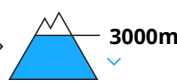
PM:



Tendency: Constant avalanche danger →
 on Wednesday 17 04 2019



Wet snow



Persistent weak layer



The avalanche conditions are spring-like. Wet loose snow avalanches and gliding avalanches are the main danger.

The conditions in the morning, after a clear night, are generally favourable. A moderate (level 2) danger of dry slab avalanches exists. The avalanche prone locations are to be found in particular on very steep shady slopes above approximately 2700 m. The near-surface layers of the snowpack can be released in some places by individual winter sport participants. A low (level 1) danger of gliding avalanches exists. Individual avalanche prone locations for gliding avalanches are to be found on steep grassy slopes below approximately 2600 m.

During the day: Gradual increase in avalanche danger as a consequence of warming during the day and solar radiation. As a consequence of the moist air more frequent small and, in isolated cases, medium-sized wet loose snow avalanches are possible. In addition a moderate (level 2) danger of gliding avalanches exists. This applies in all aspects below approximately 2200 m as well as on steep sunny slopes below approximately 2600 m.

Snowpack

Danger patterns

dp 10: springtime scenario

dp 4: cold following warm / warm following cold

Individual weak layers exist in the top section of the snowpack, in particular on shady slopes above approximately 2700 m. Outgoing longwave radiation during the night will be good. The surface of the snowpack has frozen to form a strong crust, especially at intermediate and high altitudes. The surface of the snowpack will soften during the day. The old snowpack will be wet all the way through at low and intermediate altitudes. At low altitude hardly any snow is lying.

Tendency

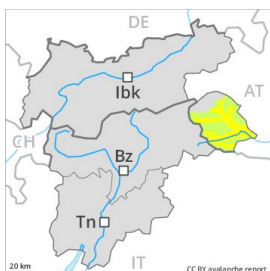


The avalanche conditions remain spring-like.



Danger Level 2 - Moderate

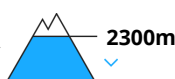
AM:



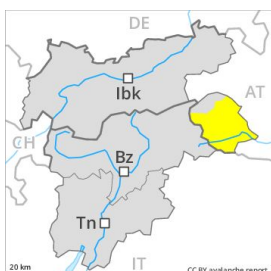
Tendency: Constant avalanche danger →
 on Wednesday 17 04 2019



Wet snow



PM:



Tendency: Constant avalanche danger →
 on Wednesday 17 04 2019



Wet snow



Persistent weak layer

Wet avalanches during the day are the main danger.

Early and late morning: The conditions are generally favourable. This applies in particular above approximately 2300 m. More mostly small wet loose snow avalanches are possible below approximately 2300 m.

During the day: Increase in avalanche danger as the day progresses. As a consequence of the moist air more frequent small and, in isolated cases, medium-sized wet loose snow avalanches are possible. In addition a certain danger of moist slab avalanches exists, in particular on very steep shady slopes between approximately 1900 and 2300 m, this applies in particular in case of a large load. Such avalanche prone locations are rather rare.

A low (level 1) danger of gliding avalanches exists, in particular in the north. Individual avalanche prone locations for gliding avalanches are to be found on steep grassy slopes below approximately 2600 m.

Snowpack

Danger patterns

dp 10: springtime scenario

dp 1: deep persistent weak layer

The surface of the snowpack has frozen to form a strong crust, in particular above approximately 2300 m. Outgoing longwave radiation during the night will be severely restricted. This applies below approximately 2300 m. Isolated avalanche prone weak layers exist in the bottom section of the old snowpack on shady slopes, especially between approximately 1900 and 2300 m. The surface of the snowpack will soften during the day. The old snowpack will be wet all the way through at low and intermediate altitudes. At low altitude hardly any snow is lying.

Tendency

The avalanche conditions in the morning are generally favourable.

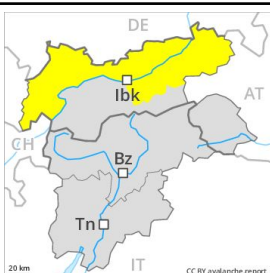
Danger Level 2 - Moderate

AM:



Tendency: Constant avalanche danger →
 on Wednesday 17 04 2019

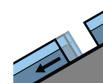
PM:



Tendency: Constant avalanche danger →
 on Wednesday 17 04 2019



Wet snow



Gliding snow



The avalanche conditions are spring-like. Wet loose snow avalanches and gliding avalanches are the main danger.

The conditions in the morning, after a clear night, are favourable. A low (level 1) danger of gliding avalanches exists. Individual avalanche prone locations for gliding avalanches are to be found on steep grassy slopes below approximately 2600 m.

During the day: Gradual increase in avalanche danger as a consequence of warming during the day and solar radiation. As a consequence of the moist air more frequent small and, in isolated cases, medium-sized wet loose snow avalanches are possible. In addition a moderate (level 2) danger of gliding avalanches exists. This applies in all aspects below approximately 2200 m as well as on steep sunny slopes below approximately 2600 m.

Snowpack

Danger patterns

dp 10: springtime scenario

dp 2: gliding snow

Outgoing longwave radiation during the night will be good. The surface of the snowpack has frozen to form a strong crust, especially at intermediate and high altitudes. The surface of the snowpack will soften during the day. The old snowpack will be wet all the way through at low and intermediate altitudes. The snowpack will be stable at elevated altitudes.

Tendency

The avalanche conditions remain spring-like.