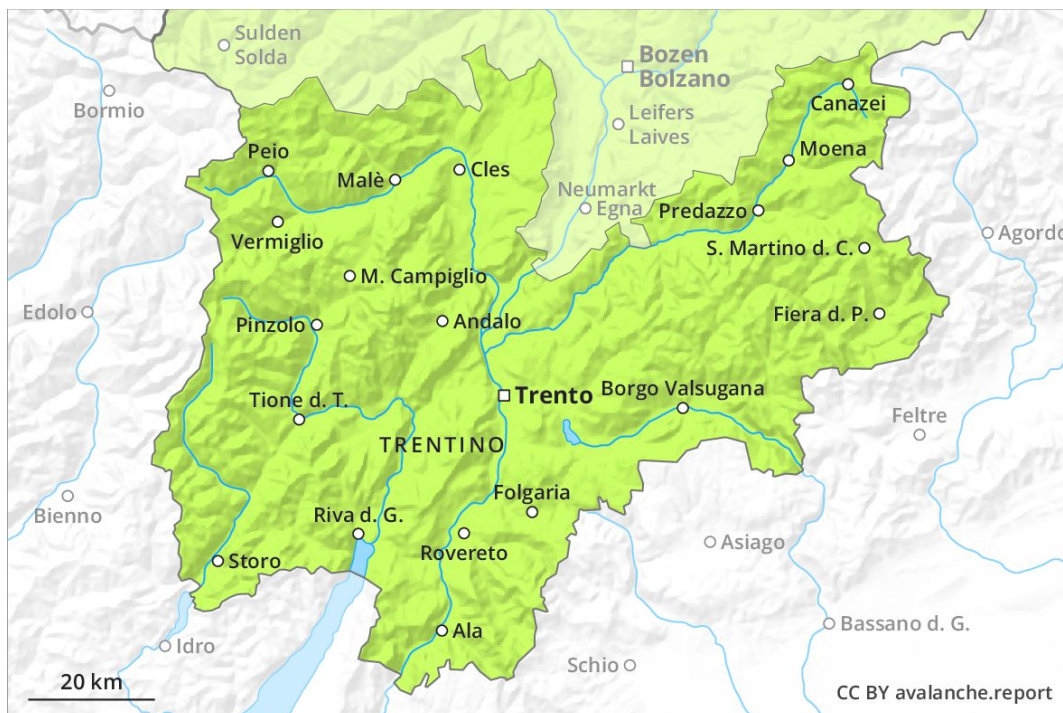
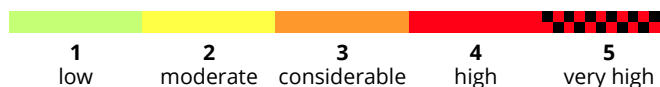
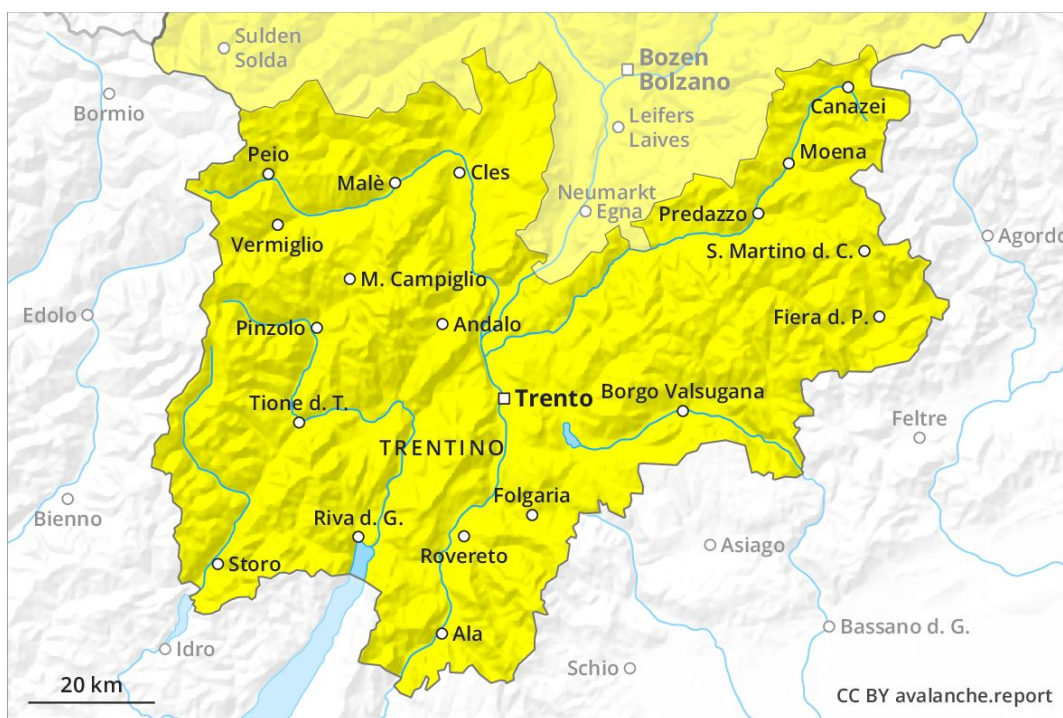


AM

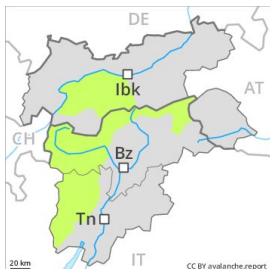


PM

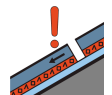


Danger Level 2 - Moderate

AM:



Tendency: Constant avalanche danger →
 on Friday 19 04 2019

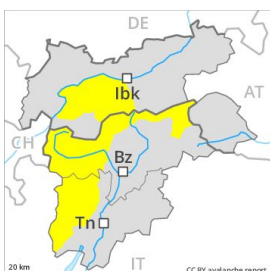


Persistent weak layer

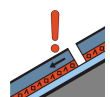


2600m

PM:



Tendency: Constant avalanche danger →
 on Friday 19 04 2019



Persistent weak layer



2600m



Wet snow



A clear night will be followed in the early morning by favourable conditions over a wide area, but the danger of wet avalanches will increase later. Weak layers in the upper part of the snowpack can still be released in very isolated cases by individual winter sport participants on extremely steep shady slopes.

A low (level 1) danger of dry slab avalanches exists. The avalanche prone locations are to be found on extremely steep shady slopes above approximately 2600 m. The near-surface layers of the snowpack can be released in isolated cases and mostly by large additional loads.

During the day: As the day progresses the likelihood of wet loose snow avalanches being released will increase. Small and medium-sized wet loose snow avalanches are possible. The avalanche prone locations are to be found in all aspects, especially on extremely steep sunny slopes at high altitudes and in high Alpine regions as well as on extremely steep shady slopes below approximately 2400 m. Apart from the danger of being buried, restraint should be exercised as well in view of the danger of avalanches sweeping people along and giving rise to falls. In addition a latent danger of gliding avalanches exists. This applies in all aspects below approximately 2200 m as well as on steep sunny slopes below approximately 2600 m.

Snowpack

Danger patterns

dp 10: springtime scenario

dp 4: cold following warm / warm following cold

Outgoing longwave radiation during the night will be good. The surface of the snowpack has frozen to form a strong crust. In steep terrain there is a danger of falling on the hard crust. Isolated avalanche prone weak layers exist in the top section of the snowpack. This applies on shady slopes above approximately 2500 m. The old snowpack will be wet all the way through at intermediate altitudes. At low altitude hardly any snow is lying.



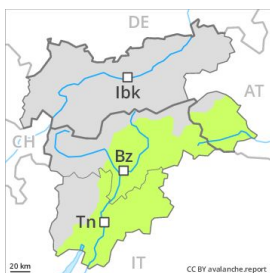
Tendency

The avalanche conditions remain spring-like. The backcountry touring conditions in the morning are favourable.



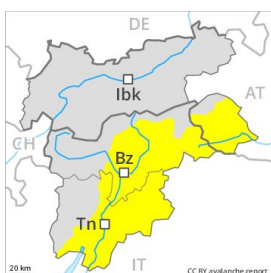
Danger Level 2 - Moderate

AM:



Tendency: Constant avalanche danger →
 on Friday 19 04 2019

PM:



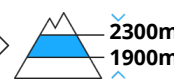
Tendency: Constant avalanche danger →
 on Friday 19 04 2019



Wet snow



Persistent weak layer



A clear night will be followed in the early morning by favourable conditions generally, but the danger of wet avalanches will increase later.

In the late morning a favourable avalanche situation will be encountered over a wide area. As a consequence of warming during the day and the solar radiation, the likelihood of wet loose snow avalanches being released will increase. The avalanche prone locations are to be found in all aspects, especially on extremely steep sunny slopes at high altitudes and in high Alpine regions as well as on extremely steep shady slopes below approximately 2400 m. Apart from the danger of being buried, restraint should be exercised as well in view of the danger of avalanches sweeping people along and giving rise to falls. In addition a certain danger of moist slab avalanches exists, in particular on very steep shady slopes between approximately 1900 and 2300 m. The avalanches are rather small and can mostly only be released by large loads. Such avalanche prone locations are rather rare.

Snowpack

Danger patterns

dp 10: springtime scenario

dp 1: deep persistent weak layer

The surface of the snowpack has frozen to form a strong crust and will soften during the day. In steep terrain there is a danger of falling on the hard crust. Isolated avalanche prone weak layers exist in the bottom section of the old snowpack on shady slopes, especially between approximately 1900 and 2300 m. The old snowpack will be wet all the way through at intermediate altitudes. At low altitude hardly any snow is lying.

Tendency

The avalanche conditions remain spring-like. The backcountry touring conditions in the morning are favourable.