

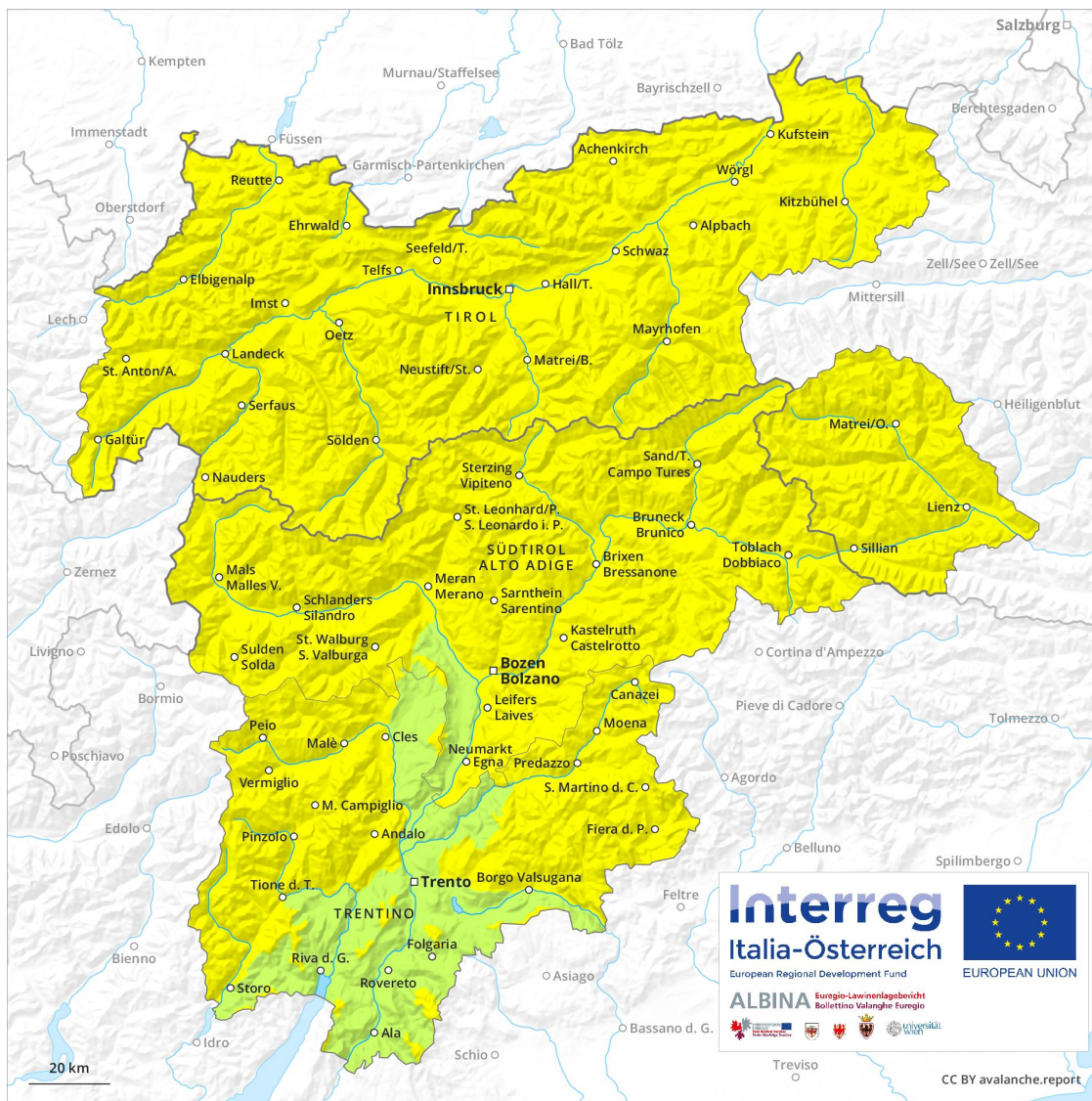
Avalanche Forecast

Wednesday 24 04 2019

Published 23 04 2019, 17:00



Avalanche.report



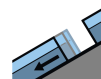
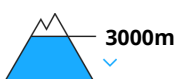
Danger Level 2 - Moderate



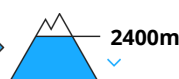
Tendency: Constant avalanche danger →
on Thursday 25 04 2019



Wet snow



Gliding snow



Wet avalanches are the main danger. Increase in danger as a consequence of warming during the day and solar radiation.

Moderate danger of wet avalanches will be encountered over a wide area. This applies on sunny slopes below approximately 3000 m as well as on shady slopes below approximately 2400 m. Caution is to be exercised in particular on extremely steep slopes. In addition there is a danger of gliding avalanches. This applies on steep grassy slopes below approximately 2400 m.

As the day progresses as a consequence of warming during the day and solar radiation there will be an increase in the danger of wet and gliding avalanches. The prevalence of avalanche prone locations and likelihood of triggering will increase. In the afternoon possibly danger level 3 (considerable) will be reached below approximately 2400 m. The avalanches can release the moist old snow as well and reach large size in some cases. Backcountry tours and off-piste skiing should be concluded early.

Snowpack

Danger patterns

dp 10: springtime scenario

dp 2: gliding snow

Outgoing longwave radiation during the night will be reduced. The surface of the snowpack is frozen, but not to a significant depth and will soften quickly. The old snowpack will be wet all the way through at intermediate and high altitudes. At low altitude hardly any snow is lying.

Tendency

Wet avalanches as the day progresses.

Danger Level 2 - Moderate



Tendency: Increasing avalanche danger
on Thursday 25 04 2019



Wet snow



2400m



New snow



2500m

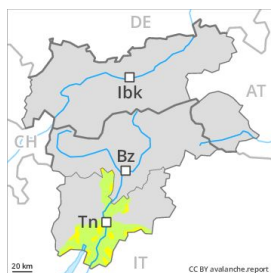
The number and size of avalanche prone locations will increase as the day progresses.

The fresh snow must be evaluated with care and prudence in particular on northeast to north to northwest facing aspects above approximately 2400 m. Dry avalanches can be released, even by small loads in isolated cases and reach medium size. In some places they can release the moist old snow as well and reach large size in some cases. As the day progresses the likelihood of moist and wet avalanches being released will increase in particular below approximately 2200 m. Apart from the danger of being buried, restraint should be exercised as well in view of the danger of avalanches sweeping people along and giving rise to falls.

Snowpack

Fresh snow to above 2000 m. The old snowpack remains moist below approximately 2400 m. At low altitude hardly any snow is lying. Isolated avalanche prone weak layers exist in the bottom section of the old snowpack on shady slopes, especially between approximately 1900 and 2400 m.

Danger Level 2 - Moderate



Tendency: Constant avalanche danger →
on Thursday 25 04 2019



Wet snow



Treeline

As a consequence of the rain, the likelihood of wet loose snow avalanches being released will increase.

As a consequence of the rain, the likelihood of wet small and medium sized avalanches being released will increase in particular on north and northwest facing slopes at elevated altitudes.

Snowpack

The old snowpack will be wet all the way through at intermediate and high altitudes. In the Etschtal no snow is lying on south facing slopes.

Tendency

The backcountry touring conditions remain spring-like.

Danger Level 2 - Moderate



Tendency: Constant avalanche danger →
on Thursday 25 04 2019



Wet snow



Treeline

Wet small and medium sized avalanches.

As a consequence of the rain, the likelihood of wet small and medium sized avalanches being released will increase in particular on very steep shady slopes at intermediate and high altitudes.

Snowpack

The old snowpack will be wet all the way through at intermediate and high altitudes. In the Etschtal no snow is lying on south facing slopes.

Tendency

The backcountry touring conditions remain spring-like.

Danger Level 2 - Moderate



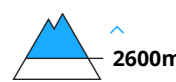
Tendency: Constant avalanche danger →
on Thursday 25 04 2019



Wet snow



Wind-drifted
snow



Wet avalanches are the main danger. Wind slabs require caution.

Moderate danger of wet avalanches will be encountered over a wide area. Caution is to be exercised in particular on extremely steep slopes below approximately 2400 m. On steep shady slopes individual wet slab avalanches are possible below approximately 2400 m. As a consequence of warming during the day there will be only a slight increase in the danger.

On extremely steep slopes small natural loose snow slides are to be expected. This applies at high altitudes and in high Alpine regions, in the event of solar radiation especially in the regions exposed to heavier precipitation as well as.

In addition the fresh wind slabs should be taken into account. Wind slabs are only small but in some cases prone to triggering. The avalanche prone locations are to be found on steep shady slopes above approximately 2600 m. They are barely recognisable because of the poor visibility.

Snowpack

Danger patterns

dp 10: springtime scenario

dp 6: cold, loose snow and wind

In some regions 10 cm of snow, and up to 20 cm in some localities, will fall above approximately 2000 m, especially in the Lienzer Dolomites. The wind will be strong to storm force. The weather will be cloudy. Outgoing longwave radiation during the night will be barely evident. The old snowpack will be wet all the way through at intermediate and high altitudes. At low altitude hardly any snow is lying.

Tendency

Wet avalanches as the day progresses.

Danger Level 2 - Moderate



Tendency: Constant avalanche danger →
on Thursday 25 04 2019



Wet snow



2400m



New snow



2400m

Medium-sized and, in isolated cases, large moist and wet avalanches are possible until the temperature drops.

On Wednesday as the snowfall level rises there will be a gradual increase in the danger of moist and wet avalanches. Below approximately 2400 m small and medium-sized moist and wet avalanches are possible. Additionally wet avalanches can also be triggered in near-ground layers and reach quite a large size. As a consequence of fresh snow and strong wind small and medium-sized dry slab avalanches are possible above approximately 2400 m. The fresh snow can be released by a single winter sport participant especially on west to north to east facing aspects at high altitudes and in high Alpine regions. In particular in the regions exposed to heavier precipitation the prevalence and size of the avalanche prone locations will increase as the day progresses. They are barely recognisable because of the poor visibility.

Snowpack

The surface of the snowpack cooled hardly at all during the overcast night and will already be soft in the early morning. Up to 2000 m rain has fallen today. In particular in the Ortler Range, in the Gurgler Range 10 cm of snow, and even more in some localities, fell above approximately 2000 m. In some regions up to 10 cm of snow. will fall above approximately 2400 m. As a consequence of fresh snow and a sometimes strong southerly wind, wind slabs will form in particular adjacent to ridgelines as well as at high altitudes and in high Alpine regions.

Tendency

Backcountry touring calls for caution.

Danger Level 2 - Moderate



Tendency: Increasing avalanche danger
on Thursday 25 04 2019



Wet snow



New snow



The number and size of avalanche prone locations will increase as the day progresses.

The fresh snow must be evaluated with care and prudence in particular on northeast to north to northwest facing aspects above approximately 2400 m. Dry avalanches can in isolated cases be released, in particular by large loads and reach medium size. In some places they can release the moist old snow as well and reach large size in some cases. As the day progresses the likelihood of moist and wet avalanches being released will increase in particular below approximately 2200 m. Apart from the danger of being buried, restraint should be exercised as well in view of the danger of avalanches sweeping people along and giving rise to falls.

Snowpack

Fresh snow to above 2000 m. The old snowpack remains moist below approximately 2400 m. At low altitude hardly any snow is lying. Isolated avalanche prone weak layers exist in the bottom section of the old snowpack on shady slopes, especially between approximately 1900 and 2400 m.

Danger Level 2 - Moderate



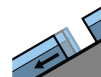
Tendency: Constant avalanche danger →
on Thursday 25 04 2019



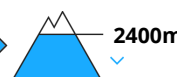
Wet snow



2400m



Gliding snow



2400m

Wet avalanches are the main danger. Wind slabs require caution.

Moderate danger of wet avalanches will be encountered over a wide area. Caution is to be exercised in particular on extremely steep slopes below approximately 2400 m. This also applies on extremely steep sunny slopes at elevated altitudes, in the event of prolonged bright spells especially. As a consequence of warming during the day there will be only a slight increase in the danger.

On extremely steep slopes small natural loose snow slides are to be expected. This applies at high altitudes and in high Alpine regions, in the event of solar radiation especially in the regions exposed to heavier precipitation as well as.

On steep grassy slopes more medium-sized gliding avalanches are possible below approximately 2400 m.

In addition the fresh wind slabs should be taken into account. Wind slabs are only small but in some cases prone to triggering. The avalanche prone locations are to be found on steep shady slopes above approximately 2600 m. They are barely recognisable because of the poor visibility.

Snowpack

Danger patterns

dp 10: springtime scenario

dp 2: gliding snow

In some regions 10 cm of snow, and even more in some localities, will fall above approximately 2000 m, especially in the Oetztal Alps. The wind will be strong to storm force. The weather will be cloudy. Outgoing longwave radiation during the night will be barely evident. The old snowpack will be wet all the way through at intermediate and high altitudes. At low altitude hardly any snow is lying.

Tendency

Wet avalanches as the day progresses.